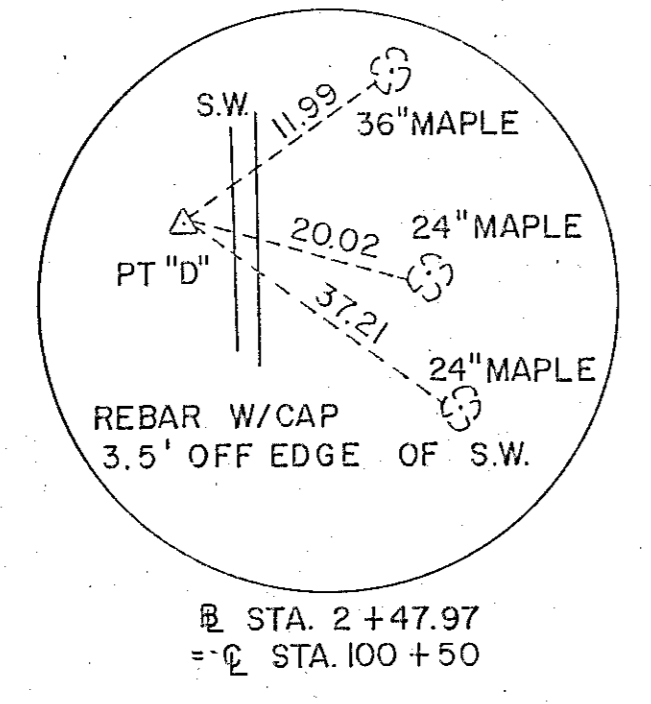
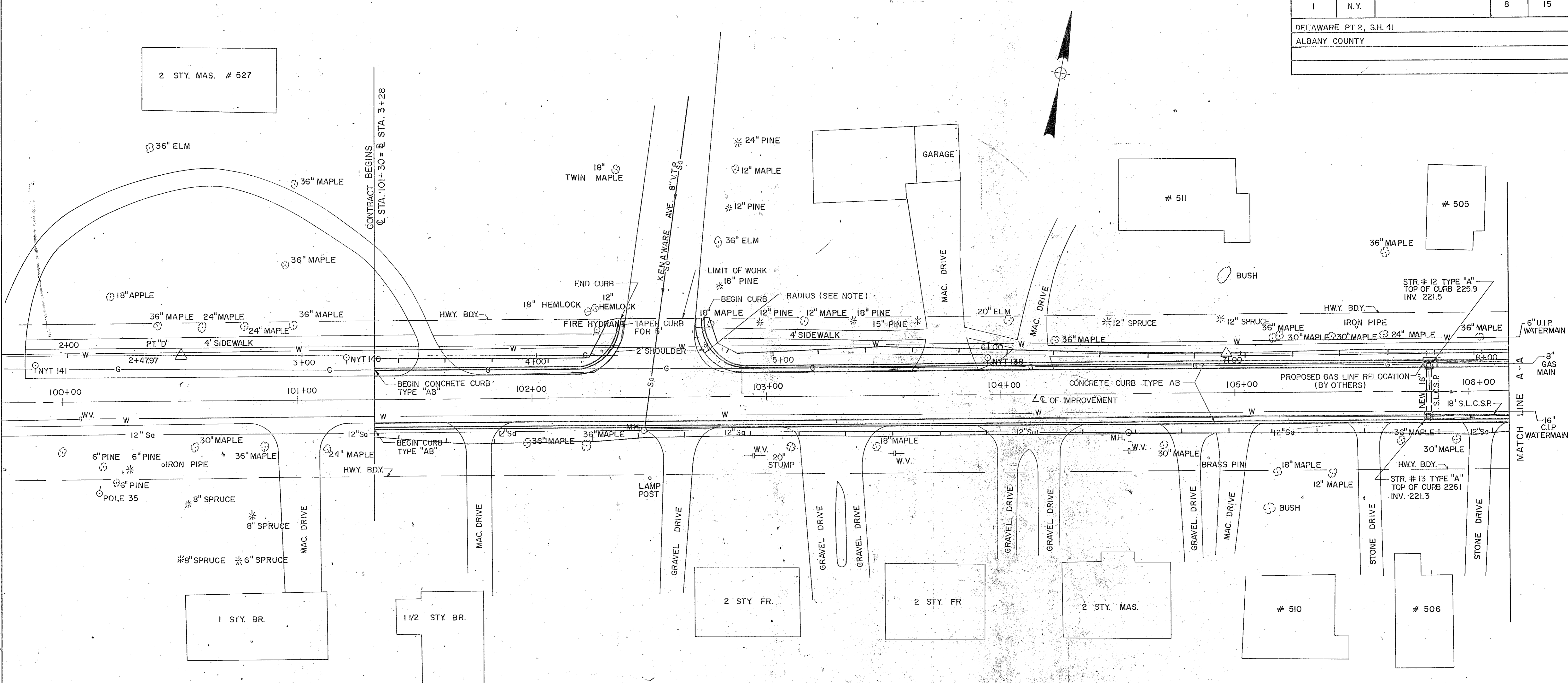


FED. ROAD REG. NO.	STATE	FEDERAL AID PROJECT NO.	SHEET NO.	TOTAL SHEETS
1	N.Y.		8	15
DELAWARE PT. 2, S.H. 41				
ALBANY COUNTY				

IN CHARGE OF *Ray A. Calleri* DESIGNED BY *Anthony J. Spina* CHECKED BY *James P. Scialoja* DATED 3-22-95 REVIEWED BY *John P. ...* DATED 4/1/95



NOTE: CURB RADII AT INTERSECTIONS WILL BE 20' MIN. OR A.O.B.E.

TOWN OF BETHELEHEM, NEW YORK  
 DEPARTMENT OF PUBLIC WORKS  
 - OFFICE COPY -  
 0 1 2 INCHES

CL STA. 101+30 TO CL STA. 106+17

PLAN  
 STATE OF NEW YORK  
 DEPARTMENT OF TRANSPORTATION

DATE :	SCALE :	DRAWING # :
	1"=20'	1