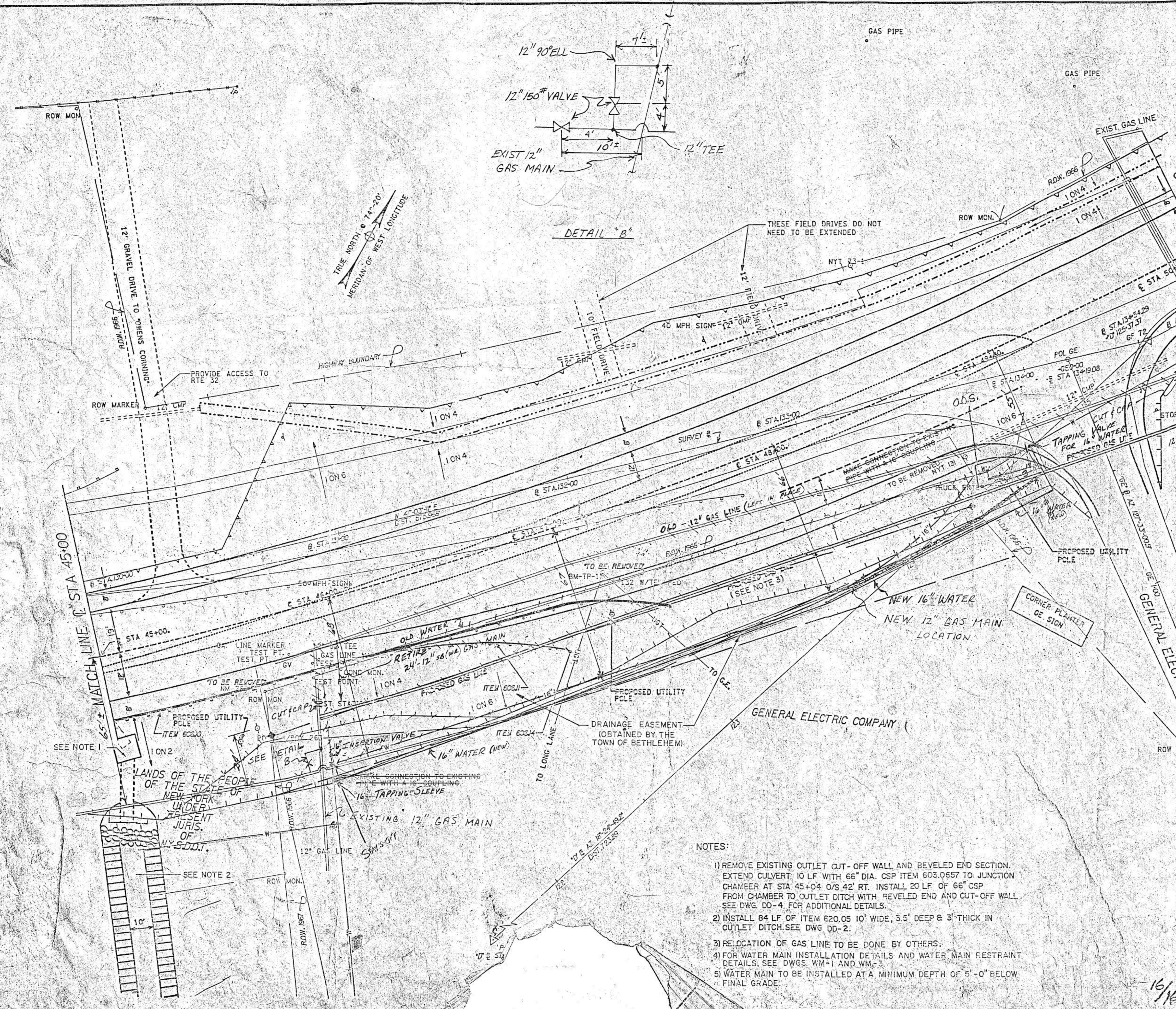


FED. ROAD REG. NO.	STATE	FEDERAL AID PROJECT NO.	SHEET NO.	TOTAL SHEETS
1	N.Y.		68A(R)	113

GLENMONT - FEURA BUSH, S.H. 367
 RTE. 32 OVER CONRAIL
 TOWNS OF BETHLEHEM & NEW SCOTLAND, ALBANY COUNTY
 THIS SHEET SUPERSEDES SHEET 68.

IN CHARGE OF *David Wilson* DESIGNED BY *B.S.S.C.* CHECKED BY *B.S.S.C.* ESTIMATED BY *B.S.S.C.* CHECKED BY *B.S.S.C.* DRAFTED BY *B.S.S.C.* CHECKED BY *B.S.S.C.* DATE



- NOTES:
- 1) REMOVE EXISTING OUTLET CUT-OFF WALL AND BEVELED END SECTION. EXTEND CULVERT 10 LF WITH 66" DIA. CSP ITEM 603.0657 TO JUNCTION CHAMBER AT STA 45+04 O/S 42' RT. INSTALL 20 LF OF 66" CSP FROM CHAMBER TO OUTLET DITCH WITH BEVELED END AND CUT-OFF WALL SEE DWG. DD-4 FOR ADDITIONAL DETAILS.
 - 2) INSTALL 84 LF OF ITEM 620.05 10' WIDE, 3.5' DEEP & 3" THICK IN OUTLET DITCH. SEE DWG DD-2.
 - 3) RELOCATION OF GAS LINE TO BE DONE BY OTHERS.
 - 4) FOR WATER MAIN INSTALLATION DETAILS AND WATER MAIN RESTRAINT DETAILS, SEE DWGS. WM-1 AND WM-3.
 - 5) WATER MAIN TO BE INSTALLED AT A MINIMUM DEPTH OF 5'-0" BELOW FINAL GRADE.

AS-BUILT REVISIONS

DRAW # 9

SIGNATURE _____ DATE _____

UTILITY & DRAINAGE PLAN

STATE OF NEW YORK
DEPARTMENT OF TRANSPORTATION

DRAWING NO. UDP-9	SCALE 1" = 20'	DATE 5/31/89	REGION ONE
----------------------	-------------------	-----------------	------------

16/16