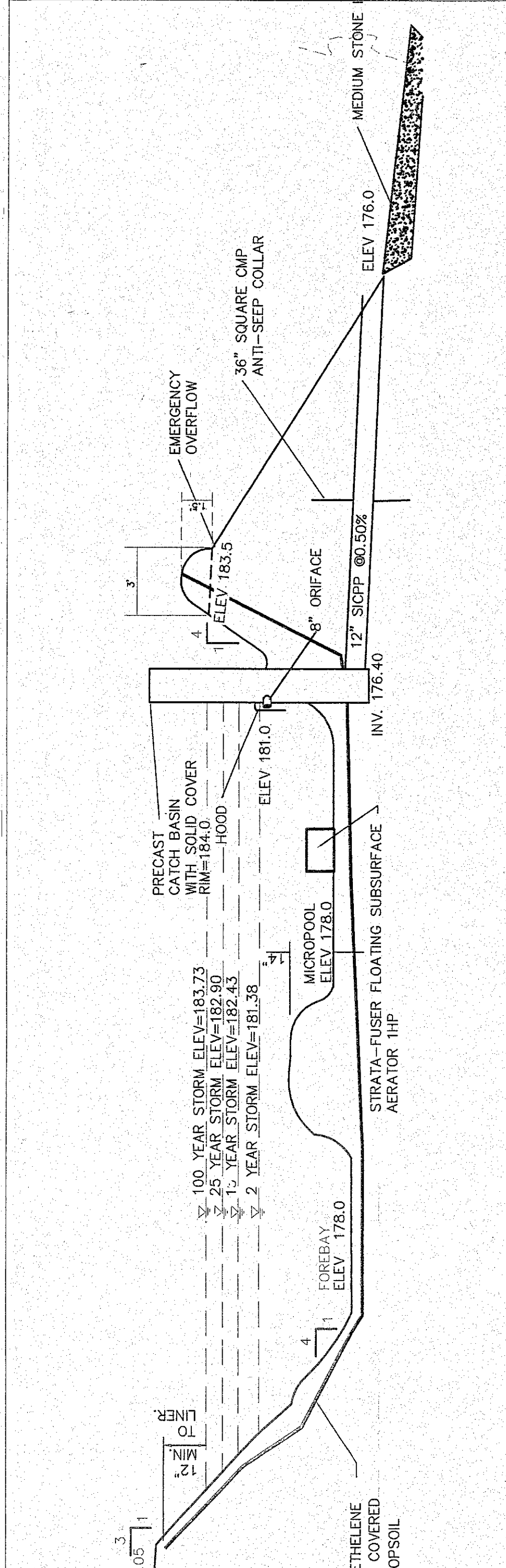
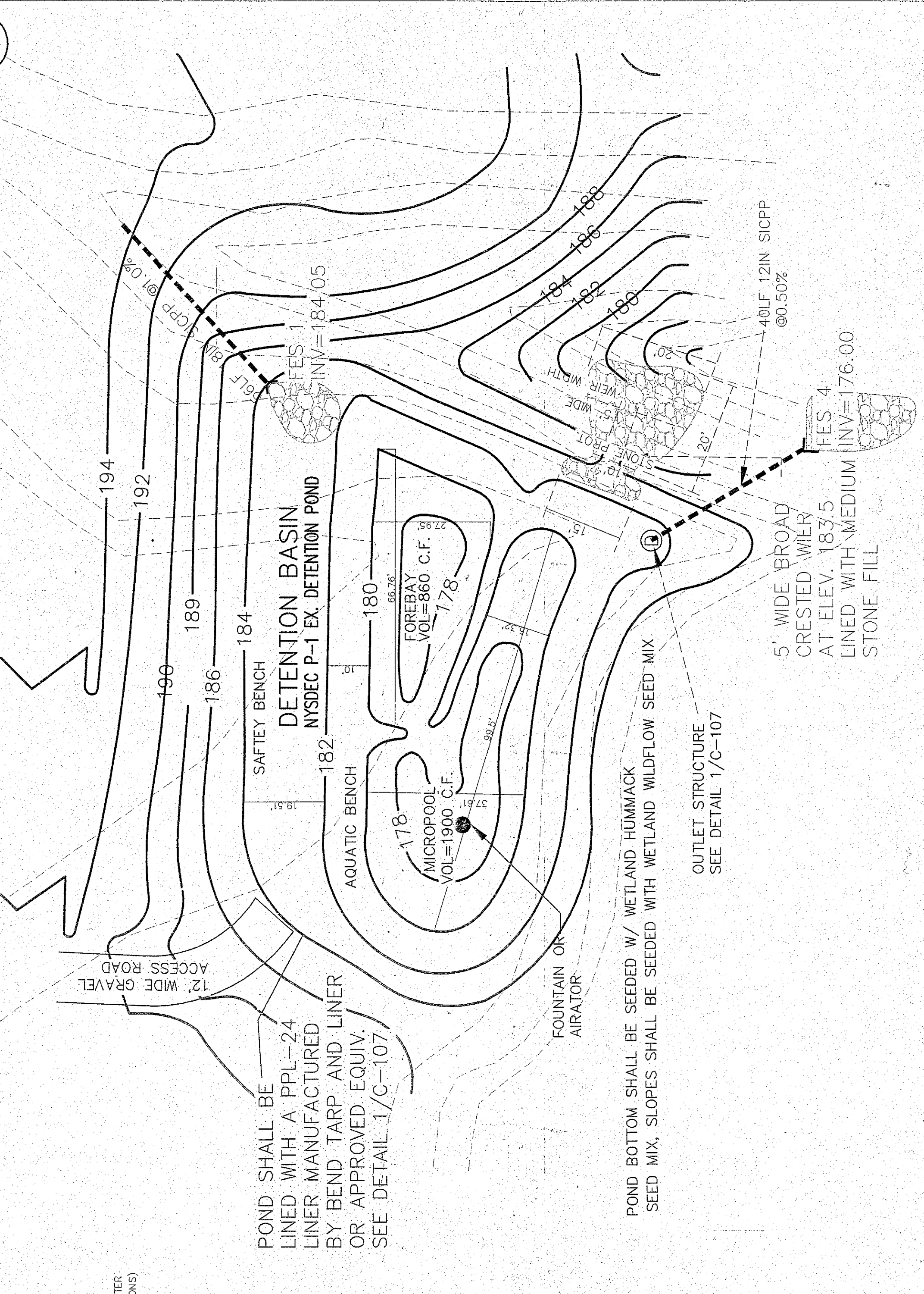


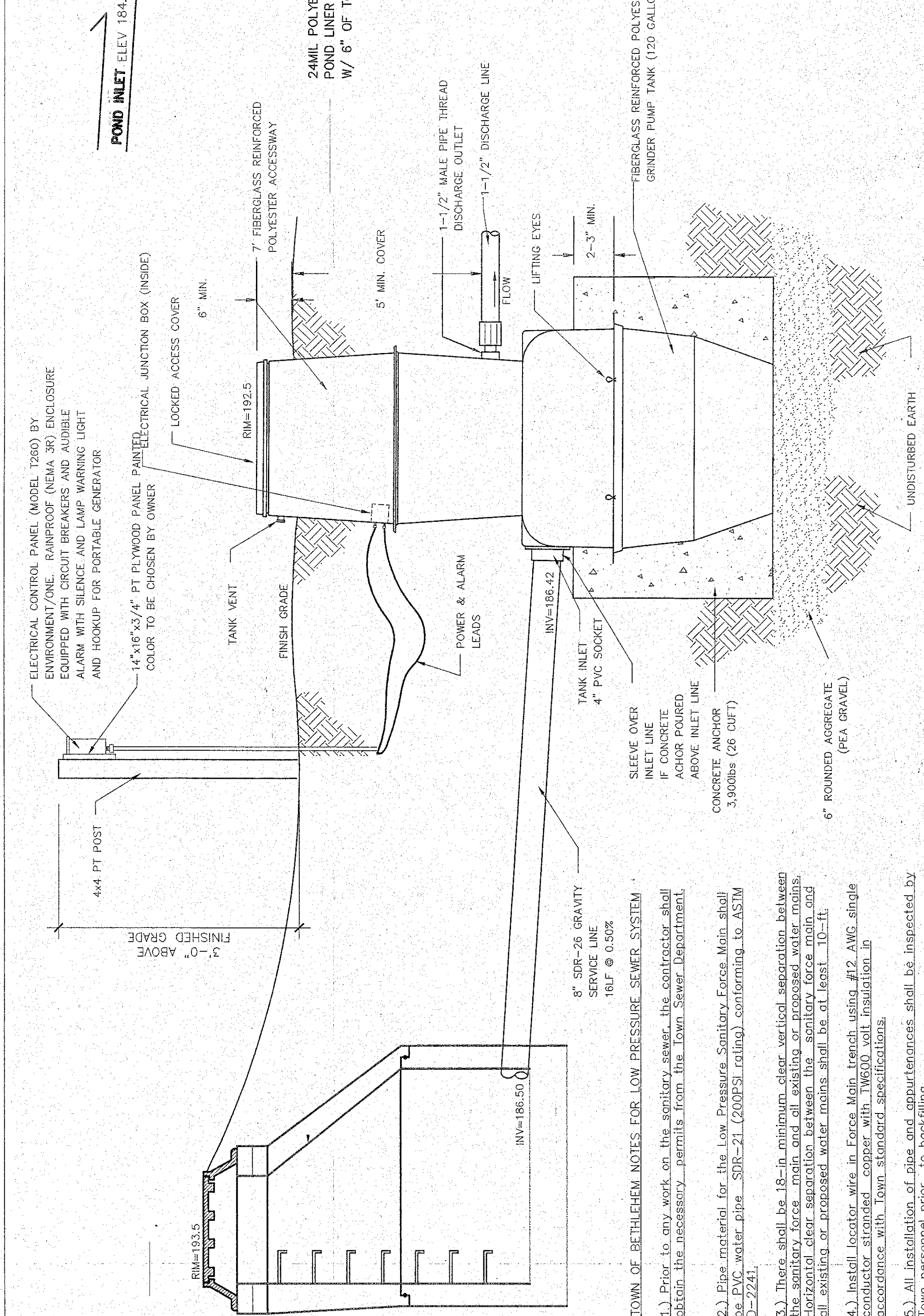
Revisions  
 REVISED 05-14-05  
 REVISED 05-24-05  
 REVISED 06-07-05  
 REVISED 08-24-05  
 REVISED 09-28-05  
 REVISED 05-21-06



**TYPICAL POND CROSS SECTION**  
 SCALE: N.T.S.



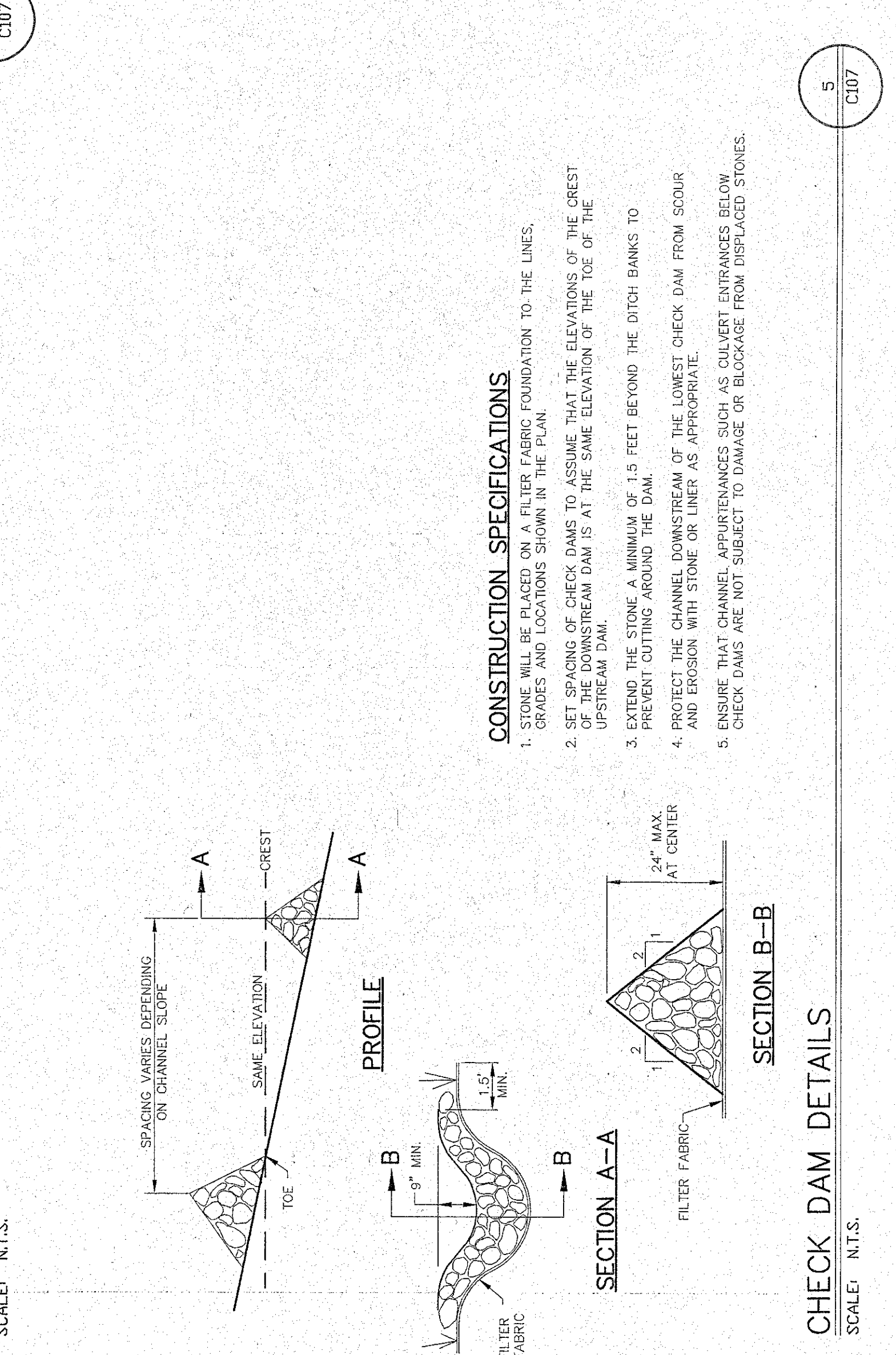
**POND PLAN VIEW DETAIL**  
 SCALE: 1"=20'



**TOWN OF BETHELEHEM NOTES FOR LOW PRESSURE SEWER SYSTEM**

- Prior to any work on the sanitary sewer, the contractor shall obtain the necessary permits from the Town Sewer Department.
- Pipe material for the Low Pressure Sanitary Force Main shall be PVC water pipe, SDR-21 (200PSI rating), conforming to ASTM D-2241.
- There shall be 18-in. minimum clear vertical separation between sanitary force main and storm sewer force main. Horizontal clear separation between the sanitary force main and oil existing or proposed water mains shall be at least 10-ft.
- Install locator wire in Force Main trench using #12 AWG single conductor stranded copper with TW600 wall insulation in accordance with town standard specifications.
- All installation of pipe and appurtenances shall be inspected by Town personnel prior to backfilling.
- After backfilling, and before being put into service, the force main is to be water pressure tested to 75 PSI without pressure loss for one hour. The test shall be witnessed by town inspection personnel.
- All Grinder Pump units to have a back-up power connection for a mobile generator set. Comply with applicable electrical codes.
- Each grinder pump to have a 1.25 - inch curb stop and check valve installed outside the assessment limits 5' apart.
- Each grinder pump to be Environment One Corporation, Myers Pump or approved equivalent, installed in accordance with the manufacturer's recommendations.
- The pump system is to be owned and maintained by Beverlyck, Inc.

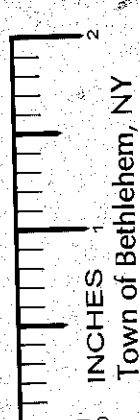
**SEWAGE GRINDER PUMP: EXTERIOR INSTALLATION**  
 ENVIRONMENT/ONE MODEL GP2014  
 SCALE: N.T.S.



**CONSTRUCTION SPECIFICATIONS**

- STONE WILL BE PLACED ON A FILTER FABRIC FOUNDATION TO THE LINES. GROVES AND LOCATIONS SHOWN IN THE PLAN.
- SET SPACING OF CHECK DAMS TO ASSUME THAT THE ELEVATIONS OF THE CREST AND EROSION WITH STONE OR LINER AS APPROPRIATE.
- EXTEND THE STONE A MINIMUM OF 1.5 FEET BEYOND THE DITCH BANKS TO PREVENT COLLAPSE AROUND THE DAM.
- PROTECT THE CHANNEL DOWNSTREAM OF THE LOWEST CHECK DAM FROM SCOUR AND EROSION WITH STONE OR LINER AS APPROPRIATE.
- ENSURE THAT CHANNEL APPEARANCES SUCH AS CULVERT ENTRANCES BELOW CHECK DAMS ARE NOT SUBJECT TO DAMAGE OR BLOCKAGE FROM DISPLACED STONES.

**CHECK DAM DETAILS**  
 SCALE: N.T.S.



PLANNING BOARD  
 TOWN OF BETHELEHEM  
 ALBANY COUNTY, NEW YORK

This plan APPROVED subject to such conditions as are stated in Building Project Approval (B/P/A)

No. 074-2004 Dated 8-3-2004  
 Approved: [Signature]  
 Title: [Title]  
 Date: [Date]

TOWN OF BETHELEHEM APPROVAL

**CROSS SECTION EMERGENCY OVERFLOW WEIR**  
 SCALE: N.T.S.