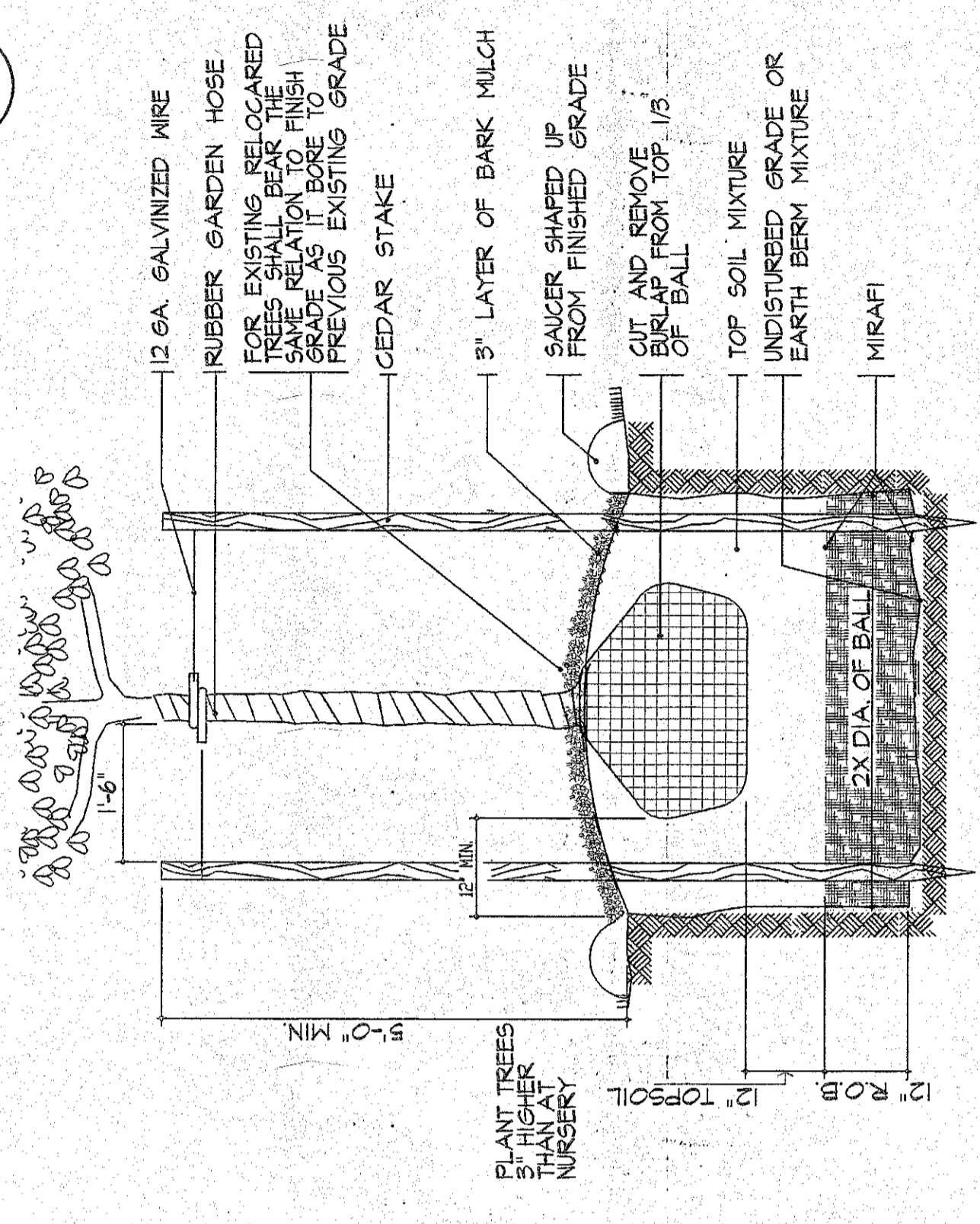
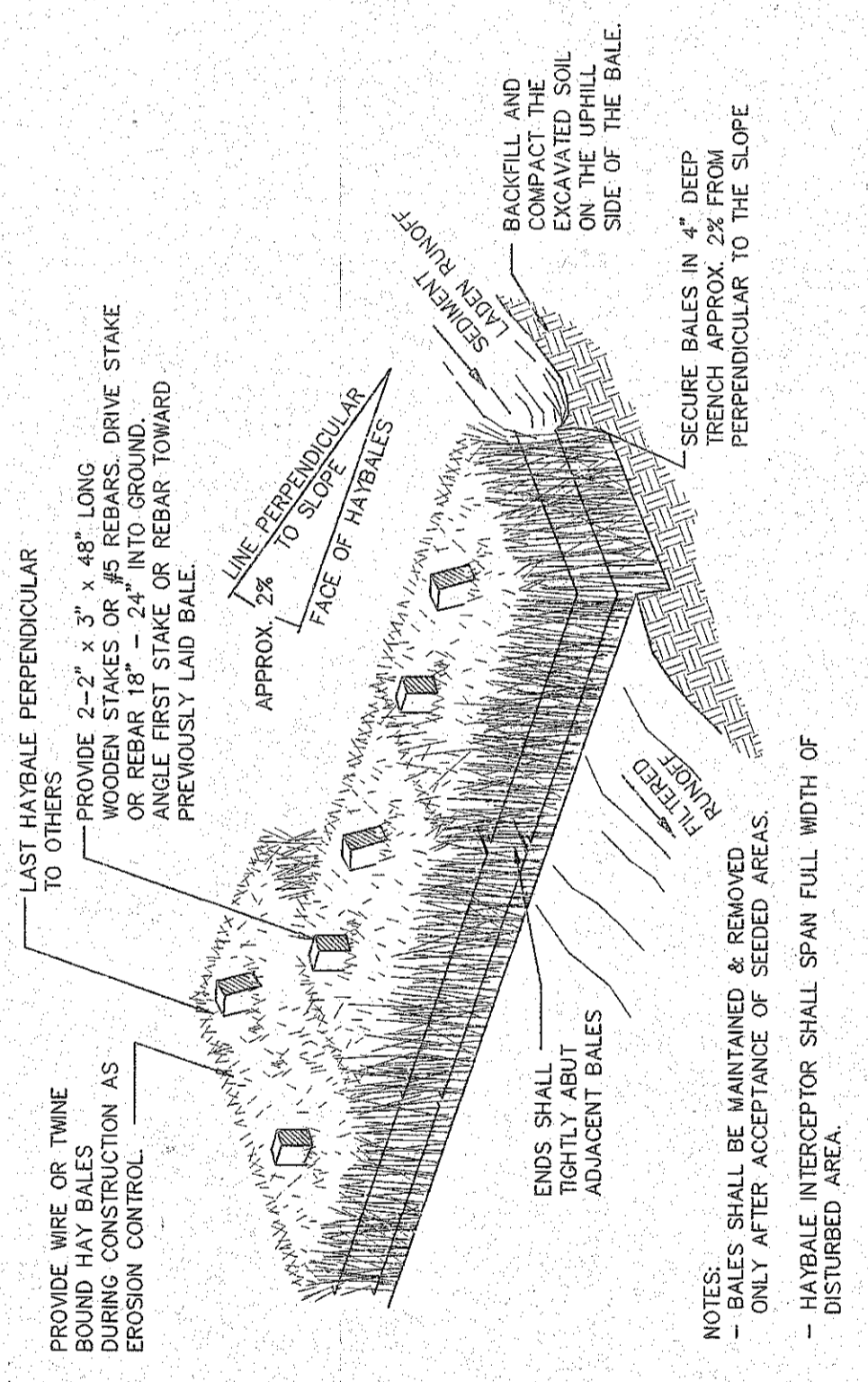


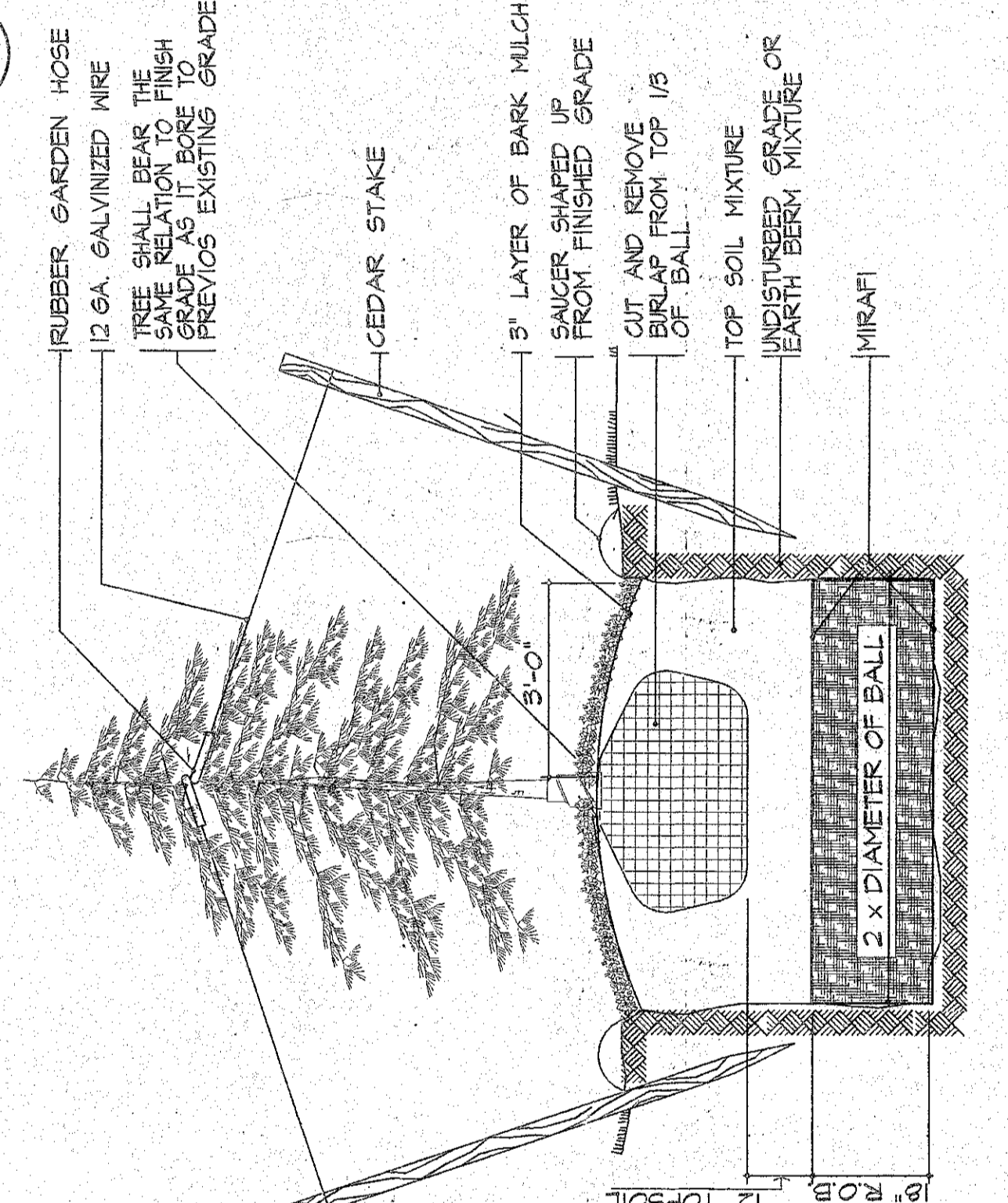
SHRUB PLANTING DETAIL
 SCALE: N.T.S.



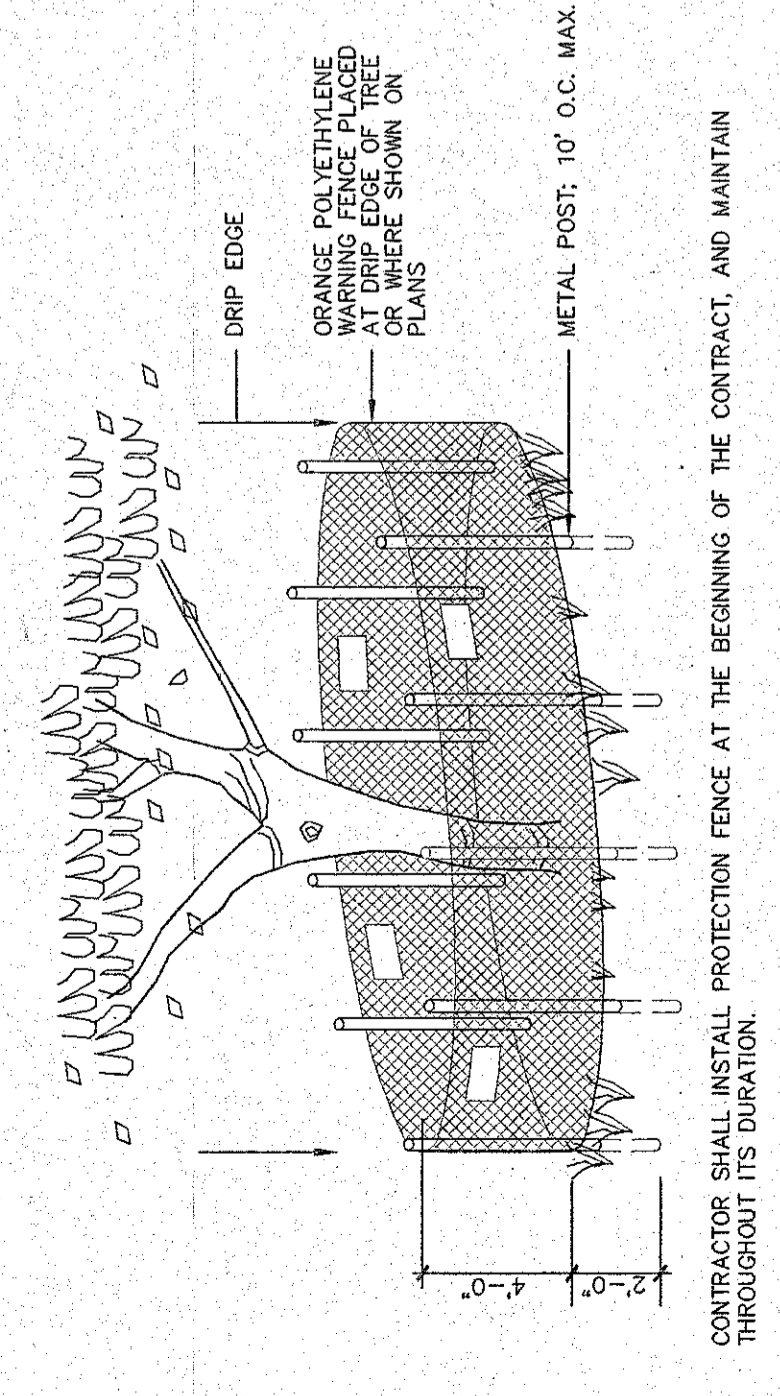
TREE PLANTING DETAIL
 SCALE: N.T.S.



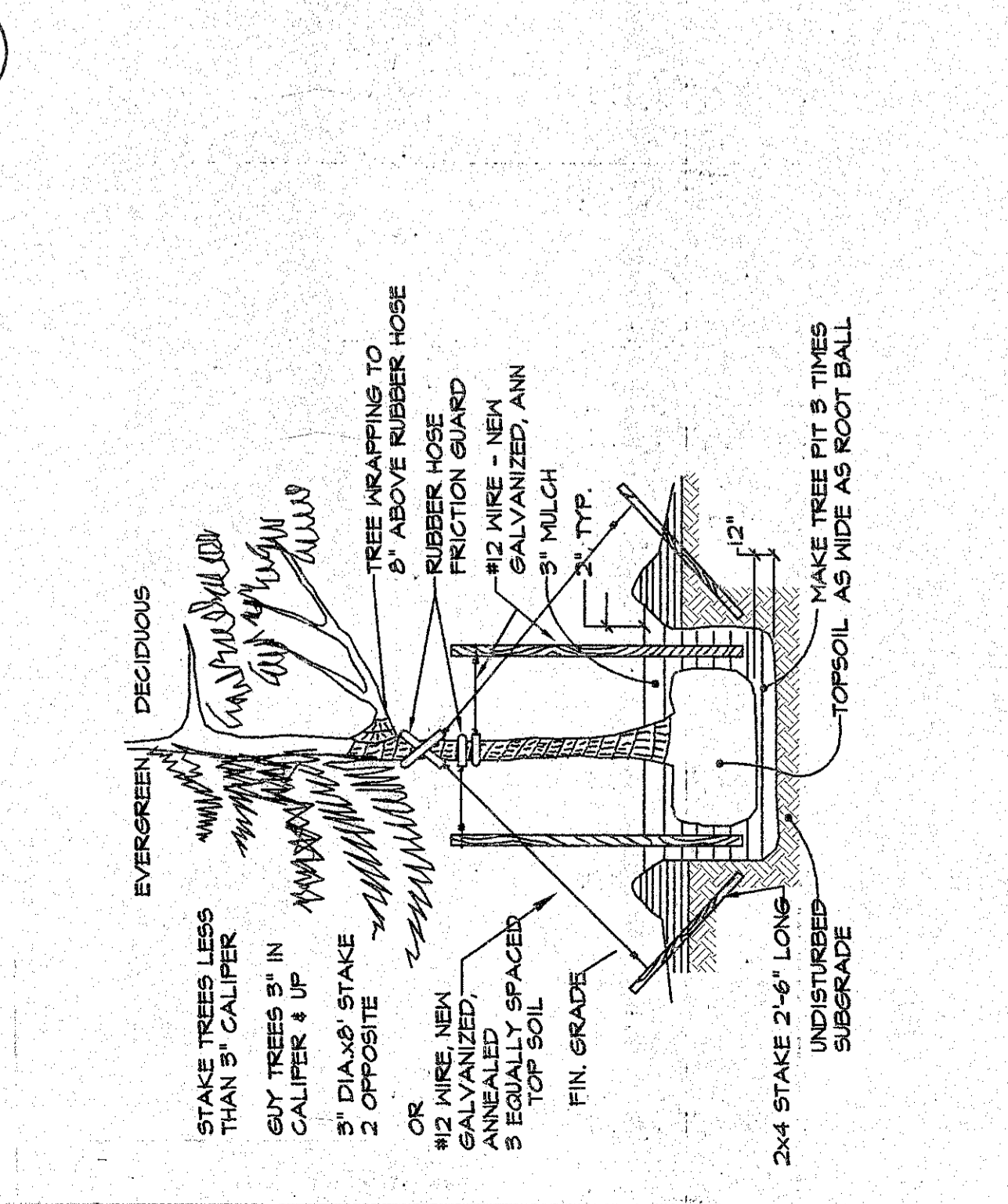
HAYBALE INTERCEPTOR / DIKE
 SCALE: N.T.S.



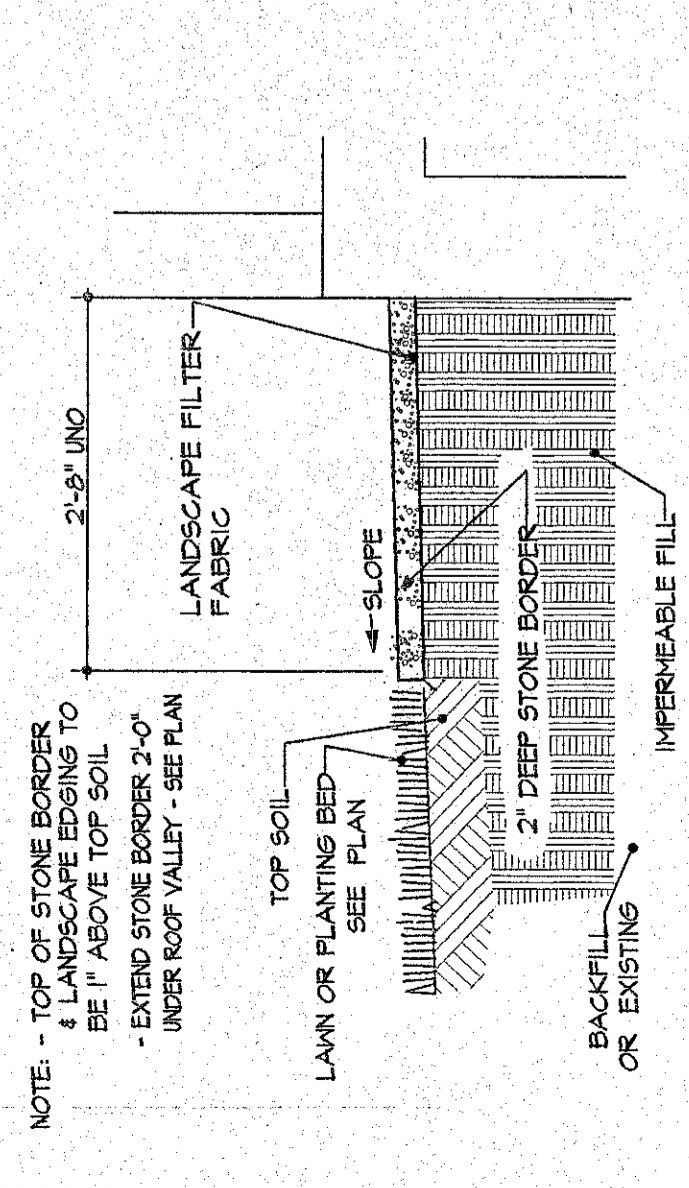
TREE PLANTING DETAIL
 SCALE: N.T.S.



TREE PROTECTION FENCE DETAIL
 SCALE: N.T.S.



TREE PLANTING DETAIL
 SCALE: N.T.S.



STONE BORDER DETAIL
 SCALE: N.T.S.

PLANNING BOARD
 TOWN OF BETHLEHEM
 ALBANY COUNTY, NEW YORK

This plan APPEALED subject to such conditions as are stated in Building Project Approval (B/P/A)

No. *103* Dated *3-7-06*

Title *Consent*
 Date *7/2/06*