

NON-WETLAND PLANT MATERIAL LIST

QUANT. KEY	LATIN NAME	COMMON NAME	CAL.	ROOT SYSTEM
19	QUERCUS RUBRA	NORTHERN RED OAK	3"	B&B
1	AESCULUS HIPPOCASTANUM	EUROPEAN HORSECHESTNUT	3"	B&B
34	CC	REDBUD	2.5"	B&B
40	CF	FLOWERING DOGWOOD	2.5"	B&B
6	LAC	AMERICAN LILAC	2.5"	B&B
52	PC	SHARBLON SERVICEBERRY	2.5"	B&B
19	SP	SYRINGA PATULICA	2.5"	B&B
42	AR	ACER RUBRUM	2.5"-3"	B&B
64	R	RHOODODENDRON	36"-48"	B&B
0	EA	EUNYMIUS ALATUS	36"-48"	B&B
42	PA	PINUS NIGRA	9'-10'	B&B
44	PA	PINUS NIGRA	9'-10'	B&B
42	PA	PINUS NIGRA	9'-10'	B&B
44	PA	PINUS NIGRA	9'-10'	B&B

CHART NOTES:

- THIS CHART INDICATES PLANTINGS ON BOTH LANDSCAPE SHEETS FOR ALL PHASES.
- THIS CHART DOES NOT INCLUDE SAPLINGS IN THE STEEP SLOPE AREAS.
- THIS CHART DOES NOT INCLUDE WETLAND PLANTINGS.

NOTES:

- ALL AREAS NOT WITHIN ROADWAYS, PARKING, OR BUILDINGS ARE GRASSED UNLESS OTHERWISE STATED.
- CONTRACTOR SHALL HAVE LIMITS OF FIELD CLEARING FLAGGED BY SURVEYOR PRIOR TO SITE CLEARING. FLAGS SHALL BE MAINTAINED THROUGHOUT CONSTRUCTION BY CONTRACTOR.
- ALL PLANT MATERIAL IS TO BE PLANTED IN ACCORDANCE WITH STANDARDS ESTABLISHED BY THE AMERICAN ASSOCIATION OF NURSERMAN.
- ALL PLANT MATERIAL SIZES INDICATED ABOVE ARE MINIMUM SIZES AT TIME OF PLANTING. IN THE EVENT OF ANY CONFLICT BETWEEN THE QUANTITIES SHOWN ABOVE AND THAT SHOWN ON THE DRAWINGS, THE DRAWINGS SHALL CONTROL.
- CONTRACTOR SHALL PLANT SAPLINGS OF THE FOLLOWING VARIETIES IN THE STEEP SLOPE AREAS:
 - QUERCUS RUBRA - NORTHERN RED OAK
 - PINUS STROBUS - WHITE PINE
 - ACER RUBRUM - RED MAPLE
 - FRAXINUS AMERICANA - WHITE ASH
- SAPLINGS TO BE PLANTED AT A RATE OF 1 PER 250 S.F.

LANDSCAPING LEGEND

SYMBOL	DESCRIPTION
	PROPOSED TREE LINE
	EXISTING TREE LINE
	PROPOSED DECIDUOUS TREES
	PROPOSED CONIFEROUS TREES
	PROPOSED SHRUB PLANTINGS
	PROPOSED LIGHT POLES
	MIXED HARDWOOD AREAS TO REMAIN
	CLEARING AND GRADING LIMIT LINE
	EXISTING WETLAND
	PROPOSED SWALE LINE
	PROPOSED WETLAND LIMIT LINE
	PROPOSED WETLAND PLANTING MITIGATION - ZONE 1 - EMERGENT WETLAND
	PROPOSED WETLAND PLANTING MITIGATION - ZONE 2 - SHRUB/SCRUB AREA
	PROPOSED WETLAND PLANTING MITIGATION - ZONE 3 - TREE SAPLING AREA

WETLAND MITIGATION PLANT MATERIAL LIST

Latin Name	Common Name	Quantity	Condition
Sparganium angustifolium	Wetland Sparganium	100	Container
Scirpus americanus	Wetland Scirpus	100	Container
Phragmites australis	Wetland Phragmites	100	Container
Lythrum hyssarifolium	Wetland Lythrum	100	Container
Sparganium angustifolium	Wetland Sparganium	100	Container
Scirpus americanus	Wetland Scirpus	100	Container
Phragmites australis	Wetland Phragmites	100	Container
Lythrum hyssarifolium	Wetland Lythrum	100	Container
Sparganium angustifolium	Wetland Sparganium	100	Container
Scirpus americanus	Wetland Scirpus	100	Container
Phragmites australis	Wetland Phragmites	100	Container
Lythrum hyssarifolium	Wetland Lythrum	100	Container

Wetland Mitigation Plant Materials Table

Latin Name	Common Name	Quantity	Condition
Sparganium angustifolium	Wetland Sparganium	100	Container
Scirpus americanus	Wetland Scirpus	100	Container
Phragmites australis	Wetland Phragmites	100	Container
Lythrum hyssarifolium	Wetland Lythrum	100	Container
Sparganium angustifolium	Wetland Sparganium	100	Container
Scirpus americanus	Wetland Scirpus	100	Container
Phragmites australis	Wetland Phragmites	100	Container
Lythrum hyssarifolium	Wetland Lythrum	100	Container
Sparganium angustifolium	Wetland Sparganium	100	Container
Scirpus americanus	Wetland Scirpus	100	Container
Phragmites australis	Wetland Phragmites	100	Container
Lythrum hyssarifolium	Wetland Lythrum	100	Container

Wetland Mitigation Plant Materials Table

Latin Name	Common Name	Quantity	Condition
Sparganium angustifolium	Wetland Sparganium	100	Container
Scirpus americanus	Wetland Scirpus	100	Container
Phragmites australis	Wetland Phragmites	100	Container
Lythrum hyssarifolium	Wetland Lythrum	100	Container
Sparganium angustifolium	Wetland Sparganium	100	Container
Scirpus americanus	Wetland Scirpus	100	Container
Phragmites australis	Wetland Phragmites	100	Container
Lythrum hyssarifolium	Wetland Lythrum	100	Container
Sparganium angustifolium	Wetland Sparganium	100	Container
Scirpus americanus	Wetland Scirpus	100	Container
Phragmites australis	Wetland Phragmites	100	Container
Lythrum hyssarifolium	Wetland Lythrum	100	Container

Wetland Mitigation Plant Materials Table

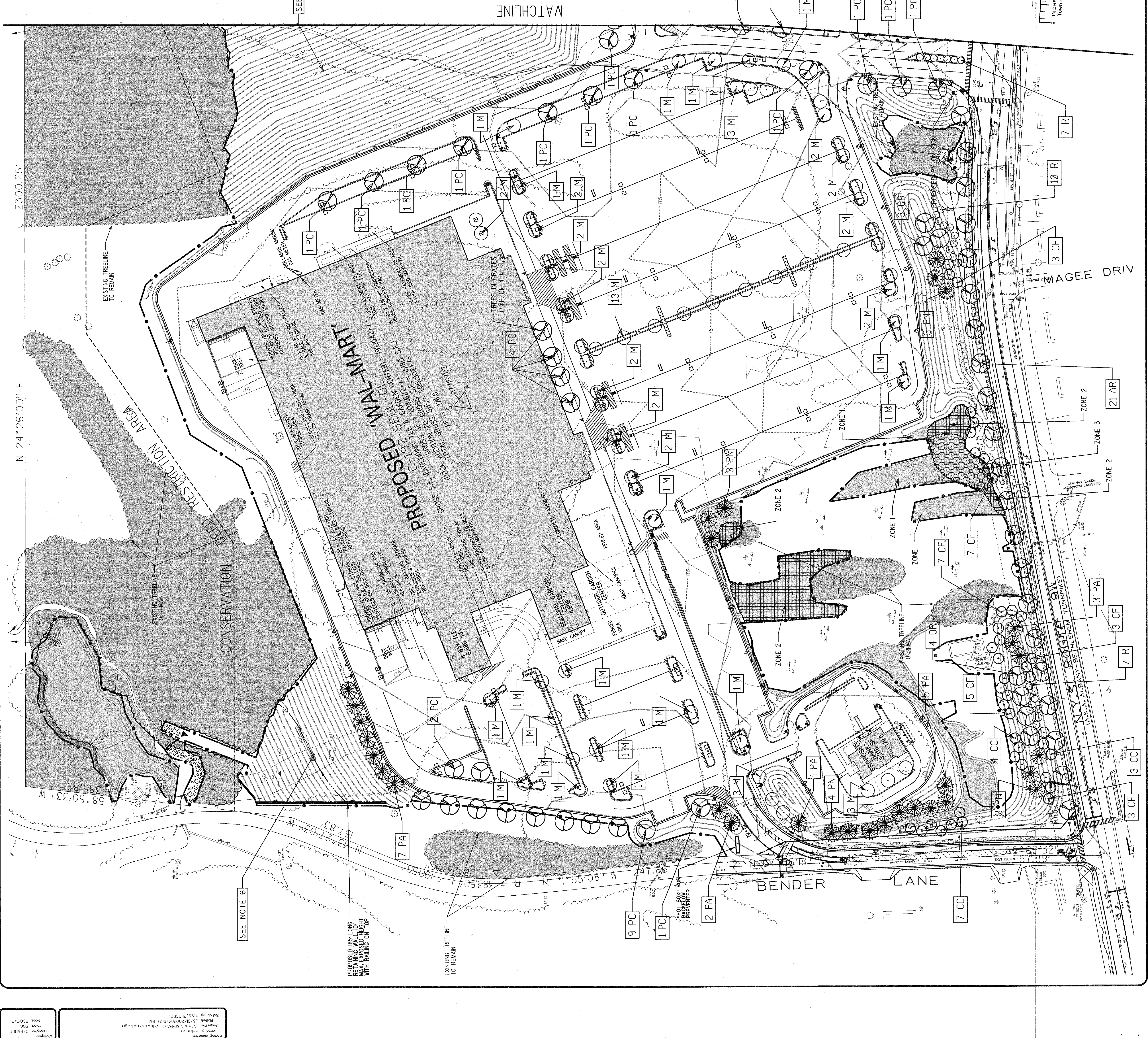
Latin Name	Common Name	Quantity	Condition
Sparganium angustifolium	Wetland Sparganium	100	Container
Scirpus americanus	Wetland Scirpus	100	Container
Phragmites australis	Wetland Phragmites	100	Container
Lythrum hyssarifolium	Wetland Lythrum	100	Container
Sparganium angustifolium	Wetland Sparganium	100	Container
Scirpus americanus	Wetland Scirpus	100	Container
Phragmites australis	Wetland Phragmites	100	Container
Lythrum hyssarifolium	Wetland Lythrum	100	Container
Sparganium angustifolium	Wetland Sparganium	100	Container
Scirpus americanus	Wetland Scirpus	100	Container
Phragmites australis	Wetland Phragmites	100	Container
Lythrum hyssarifolium	Wetland Lythrum	100	Container

Wetland Mitigation Plant Materials Table

Latin Name	Common Name	Quantity	Condition
Sparganium angustifolium	Wetland Sparganium	100	Container
Scirpus americanus	Wetland Scirpus	100	Container
Phragmites australis	Wetland Phragmites	100	Container
Lythrum hyssarifolium	Wetland Lythrum	100	Container
Sparganium angustifolium	Wetland Sparganium	100	Container
Scirpus americanus	Wetland Scirpus	100	Container
Phragmites australis	Wetland Phragmites	100	Container
Lythrum hyssarifolium	Wetland Lythrum	100	Container
Sparganium angustifolium	Wetland Sparganium	100	Container
Scirpus americanus	Wetland Scirpus	100	Container
Phragmites australis	Wetland Phragmites	100	Container
Lythrum hyssarifolium	Wetland Lythrum	100	Container

Wetland Mitigation Plant Materials Table

Latin Name	Common Name	Quantity	Condition
Sparganium angustifolium	Wetland Sparganium	100	Container
Scirpus americanus	Wetland Scirpus	100	Container
Phragmites australis	Wetland Phragmites	100	Container
Lythrum hyssarifolium	Wetland Lythrum	100	Container
Sparganium angustifolium	Wetland Sparganium	100	Container
Scirpus americanus	Wetland Scirpus	100	Container
Phragmites australis	Wetland Phragmites	100	Container
Lythrum hyssarifolium	Wetland Lythrum	100	Container
Sparganium angustifolium	Wetland Sparganium	100	Container
Scirpus americanus	Wetland Scirpus	100	Container
Phragmites australis	Wetland Phragmites	100	Container
Lythrum hyssarifolium	Wetland Lythrum	100	Container



SEE NOTE 6

PROPOSED 18" LOW RETAINED CURB WITH 12" HIGH BACKLOW PREVENTER WITH RAILING ON TOP

EXISTING TREELINE TO REMAIN

TREES IN GRATES (TYP. OF 4)

NEEDS TO BE RELOCATED TO NEW SPACING

HARD CANOPY

EXISTING TREELINE TO REMAIN

PROPOSED PYLON SIGN

SEE NOTE 6

PROPOSED 18" LOW RETAINED CURB WITH 12" HIGH BACKLOW PREVENTER WITH RAILING ON TOP

EXISTING TREELINE TO REMAIN

TREES IN GRATES (TYP. OF 4)

NEEDS TO BE RELOCATED TO NEW SPACING

HARD CANOPY

EXISTING TREELINE TO REMAIN

PROPOSED PYLON SIGN

SEE NOTE 6

SEE NOTE 6

PROPOSED 18" LOW RETAINED CURB WITH 12" HIGH BACKLOW PREVENTER WITH RAILING ON TOP

EXISTING TREELINE TO REMAIN

TREES IN GRATES (TYP. OF 4)

NEEDS TO BE RELOCATED TO NEW SPACING

HARD CANOPY

EXISTING TREELINE TO REMAIN

PROPOSED PYLON SIGN

SEE NOTE 6

SEE NOTE 6

PROPOSED 18" LOW RETAINED CURB WITH 12" HIGH BACKLOW PREVENTER WITH RAILING ON TOP

EXISTING TREELINE TO REMAIN

TREES IN GRATES (TYP. OF 4)

NEEDS TO BE RELOCATED TO NEW SPACING

HARD CANOPY

EXISTING TREELINE TO REMAIN

PROPOSED PYLON SIGN

SEE NOTE 6

SEE NOTE 6

PROPOSED 18" LOW RETAINED CURB WITH 12" HIGH BACKLOW PREVENTER WITH RAILING ON TOP

EXISTING TREELINE TO REMAIN

TREES IN GRATES (TYP. OF 4)

NEEDS TO BE RELOCATED TO NEW SPACING

HARD CANOPY

EXISTING TREELINE TO REMAIN

PROPOSED PYLON SIGN

SEE NOTE 6

SEE NOTE 6

PROPOSED 18" LOW RETAINED CURB WITH 12" HIGH BACKLOW PREVENTER WITH RAILING ON TOP

EXISTING TREELINE TO REMAIN

TREES IN GRATES (TYP. OF 4)

NEEDS TO BE RELOCATED TO NEW SPACING

HARD CANOPY

EXISTING TREELINE TO REMAIN

PROPOSED PYLON SIGN

SEE NOTE 6

SEE NOTE 6

PROPOSED 18" LOW RETAINED CURB WITH 12" HIGH BACKLOW PREVENTER WITH RAILING ON TOP

EXISTING TREELINE TO REMAIN

TREES IN GRATES (TYP. OF 4)

NEEDS TO BE RELOCATED TO NEW SPACING

HARD CANOPY

EXISTING TREELINE TO REMAIN

PROPOSED PYLON SIGN

SEE NOTE 6

SEE NOTE 6

PROPOSED 18" LOW RETAINED CURB WITH 12" HIGH BACKLOW PREVENTER WITH RAILING ON TOP

EXISTING TREELINE TO REMAIN

TREES IN GRATES (TYP. OF 4)

NEEDS TO BE RELOCATED TO NEW SPACING

HARD CANOPY

EXISTING TREELINE TO REMAIN

PROPOSED PYLON SIGN

SEE NOTE 6

SEE NOTE 6

PROPOSED 18" LOW RETAINED CURB WITH 12" HIGH BACKLOW PREVENTER WITH RAILING ON TOP

EXISTING TREELINE TO REMAIN

TREES IN GRATES (TYP. OF 4)

NEEDS TO BE RELOCATED TO NEW SPACING

HARD CANOPY

EXISTING TREELINE TO REMAIN

PROPOSED PYLON SIGN

SEE NOTE 6

SEE NOTE 6

PROPOSED 18" LOW RETAINED CURB WITH 12" HIGH BACKLOW PREVENTER WITH RAILING ON TOP

EXISTING TREELINE TO REMAIN

TREES IN GRATES (TYP. OF 4)

NEEDS TO BE RELOCATED TO NEW SPACING

HARD CANOPY

EXISTING TREELINE TO REMAIN

PROPOSED PYLON SIGN

SEE NOTE 6

SEE NOTE 6

PROPOSED 18" LOW RETAINED CURB WITH 12" HIGH BACKLOW PREVENTER WITH RAILING ON TOP

EXISTING TREELINE TO REMAIN

TREES IN GRATES (TYP. OF 4)

NEEDS TO BE RELOCATED TO NEW SPACING

HARD CANOPY

EXISTING TREELINE TO REMAIN

PROPOSED PYLON SIGN

SEE NOTE 6

SEE NOTE 6

PROPOSED 18" LOW RETAINED CURB WITH 12" HIGH BACKLOW PREVENTER WITH RAILING ON TOP

EXISTING TREELINE TO REMAIN

TREES IN GRATES (TYP. OF 4)

NEEDS TO BE RELOCATED TO NEW SPACING

HARD CANOPY

EXISTING TREELINE TO REMAIN

PROPOSED PYLON SIGN

SEE NOTE 6

SEE NOTE 6

PROPOSED 18" LOW RETAINED CURB WITH 12" HIGH BACKLOW PREVENTER WITH RAILING ON TOP

EXISTING TREELINE TO REMAIN

TREES IN GRATES (TYP. OF 4)

NEEDS TO BE RELOCATED TO NEW SPACING

HARD CANOPY

EXISTING TREELINE TO REMAIN

PROPOSED PYLON SIGN

SEE NOTE 6

SEE NOTE 6

PROPOSED 18" LOW RETAINED CURB WITH 12" HIGH BACKLOW PREVENTER WITH RAILING ON TOP

EXISTING TREELINE TO REMAIN

TREES IN GRATES (TYP. OF 4)

NEEDS TO BE RELOCATED TO NEW SPACING

HARD CANOPY

EXISTING TREELINE TO REMAIN

PROPOSED PYLON SIGN

SEE NOTE 6

SEE NOTE 6

PROPOSED 18" LOW RETAINED CURB WITH 12" HIGH BACKLOW PREVENTER WITH RAILING ON TOP

EXISTING TREELINE TO REMAIN

TREES IN GRATES (TYP. OF 4)

NEEDS TO BE RELOCATED TO NEW SPACING

HARD CANOPY

EXISTING TREELINE TO REMAIN

PROPOSED PYLON SIGN