

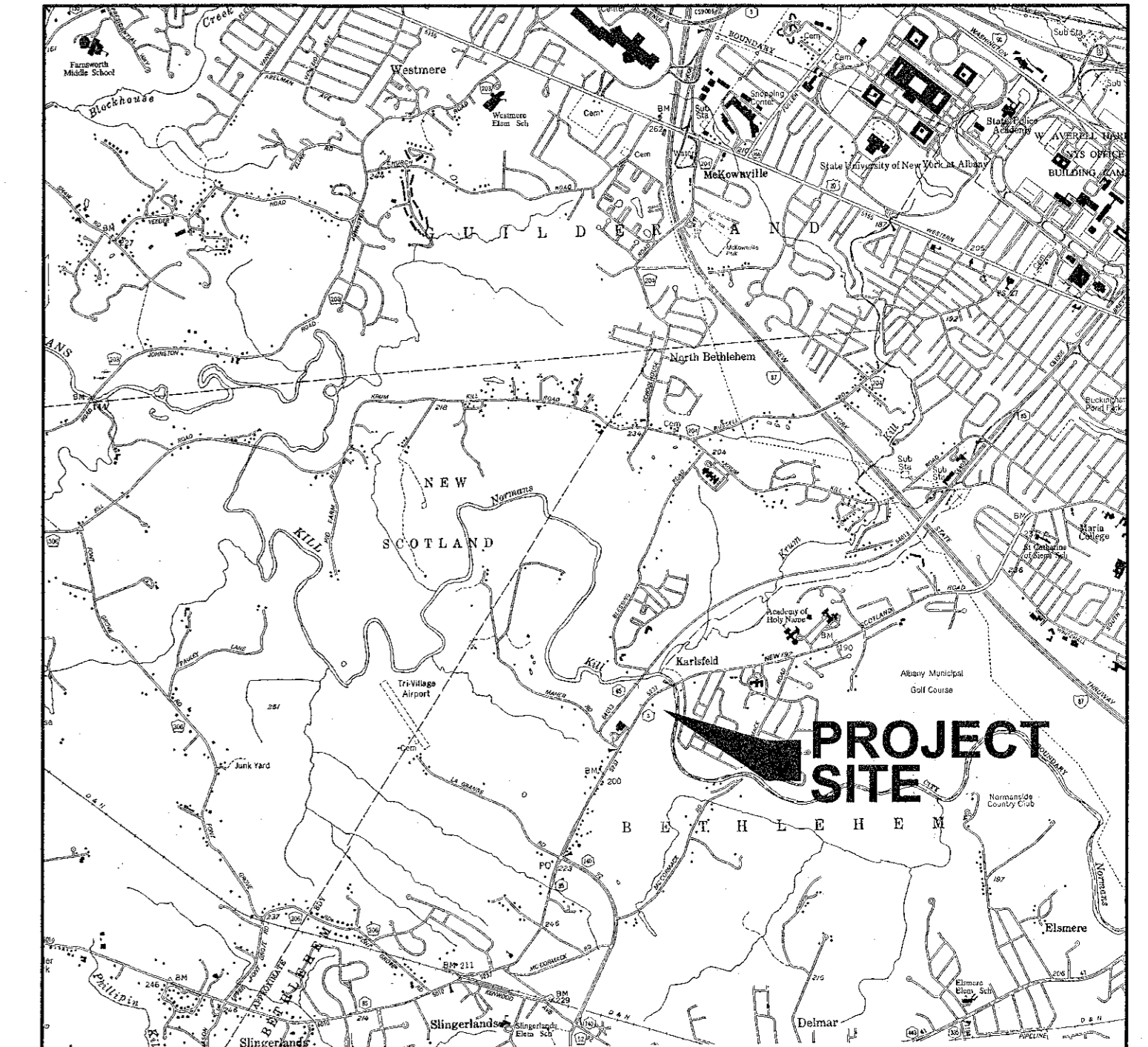
PROPOSED AMENDMENT TO PLANNED COMMERCIAL DISTRICT NO. 6 NEW SCOTLAND ROAD COMMERCIAL BUSINESS PARK PHASE II

1220 NEW SCOTLAND ROAD
TOWN OF BETHLEHEM ○ ALBANY COUNTY ○ NEW YORK

APPLICANT

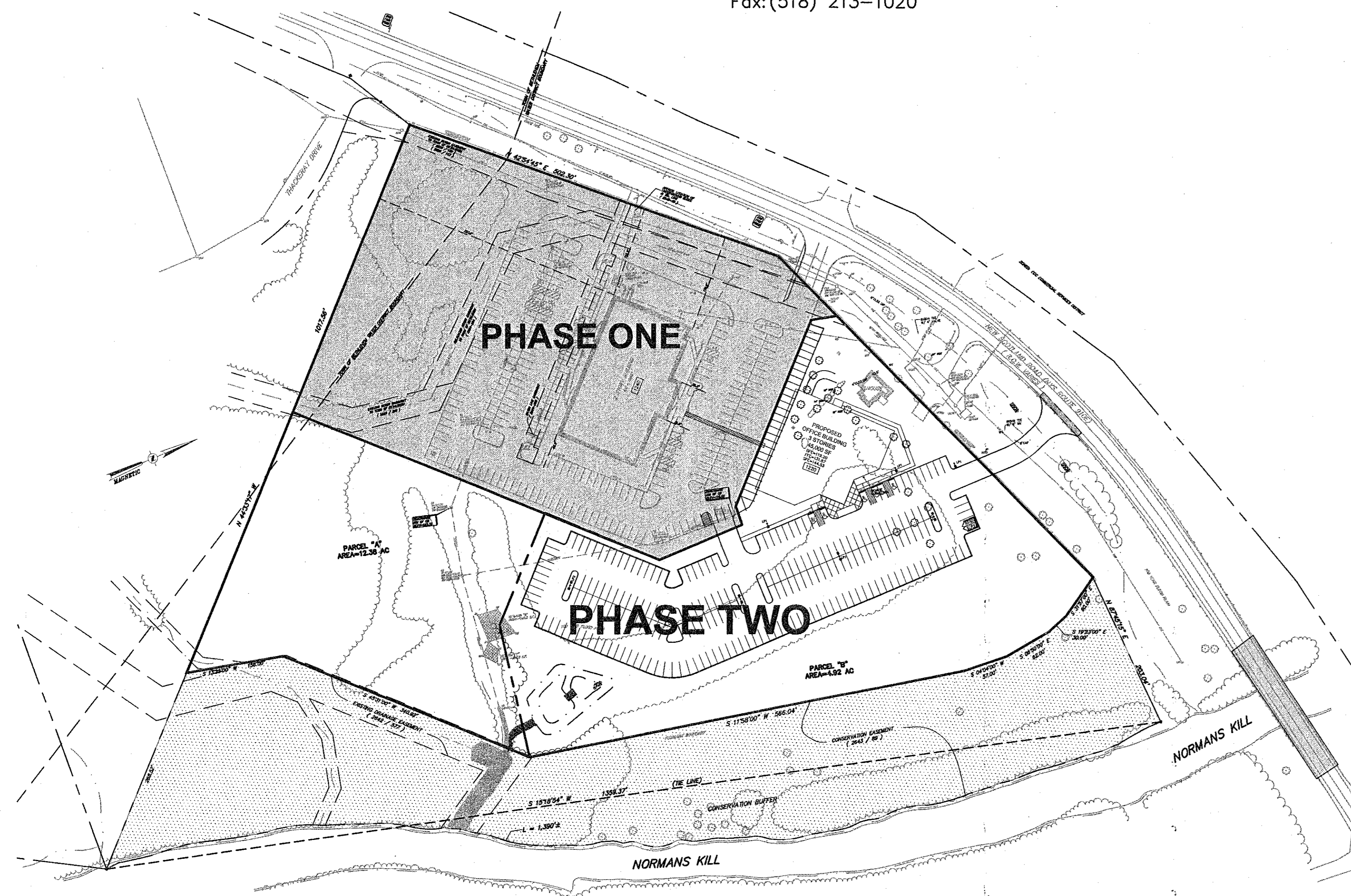
FIRST COLUMBIA L.L.C.

26 Century Hill Drive
Latham, New York 12113
Tel: (518) 213-1000
Fax: (518) 213-1020



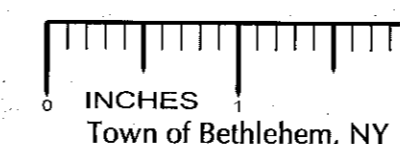
SITE LOCATION MAP

NOT TO SCALE



OVERALL SITE PLAN

SCALE: 1"=100'

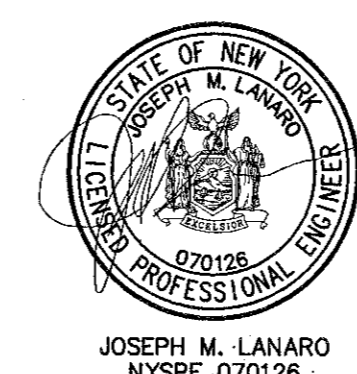


LIST OF DRAWINGS:

| SHEET | PAGE | TITLE |
|-------|------|--|
| C1 | 1 | COVER PAGE |
| S1 | 2 | SUBDIVISION PLAN |
| SP1 | 3 | EXISTING CONDITIONS AND DEMOLITION PLAN |
| SP2 | 4 | LAYOUT PLAN |
| SP3 | 5 | UTILITY PLAN |
| SP4 | 6 | GRADING AND EROSION CONTROL PLAN |
| SP5 | 7 | ILLUMINATION PLAN |
| SP6 | 8 | LANDSCAPE PLAN |
| SP7 | 9 | HIGHWAY WORK PLAN, PROFILE AND DETAILS |
| PP1 | 10 | PLAN & PROFILE - WATER DISTRIBUTION SYSTEM |
| PP2 | 11 | PLAN & PROFILE - SANITARY SEWER |
| SD1 | 12 | SITE DETAILS |
| SD2 | 13 | SANITARY SEWER DETAILS |
| SD3 | 14 | SANITARY SEWER DETAILS |
| SD4 | 15 | DRAINAGE AND EROSION CONTROL DETAILS |
| A-1 | 16 | BUILDING ELEVATIONS |
| A-4 | 17 | BUILDING ELEVATIONS |

RECEIVED
DEC 8 2004
ALBANY COUNTY
TOWN OF BETHLEHEM

BPP/ty
Amended
11-10-04
C1



JOSEPH M. LANARO
NYSPE 070126

CHAZEN ENGINEERING & LAND SURVEYING CO., P.C.

Capital District Office: 20 Gurley Avenue, Troy, New York 12182, Phone: (518) 235-8050
Dutchess County Office: 21 Fox Street, Poughkeepsie, New York 12601, Phone: (845) 454-3980
Orange County Office: 263 Route 17K, Newburgh, New York 12550, Phone: (845) 567-1133
North Country Office: 110 Glen Street, Glens Falls, New York 12801, Phone: (518) 812-0513

DATE: SEPTEMBER 17, 2004 PROJECT NUMBER: 30124.00 CAD DWG: C1-COVER.DWG