

**MAP REFERENCES:**

1. "ALTA/ACSM LAND TITLE SURVEY" SURVEY MAP OF LANDS OF FIRST COLUMBIA SLINGERLANDS, L.L.C., (1240 NEW SCOTLAND ROAD) PREPARED BY S.Y. KIM LAND SURVEYOR P.C., DATED OCTOBER 26, 2000.

**DEED REFERENCE:**

1. TERRAMERE, L.L.C. TO FIRST COLUMBIA SLINGERLANDS, LLC BY DEED DATED SEPTEMBER 22, 1999, AND RECORDED IN THE ALBANY COUNTY CLERK'S OFFICE ON SEPTEMBER 23, 1999.

**GENERAL NOTES:**

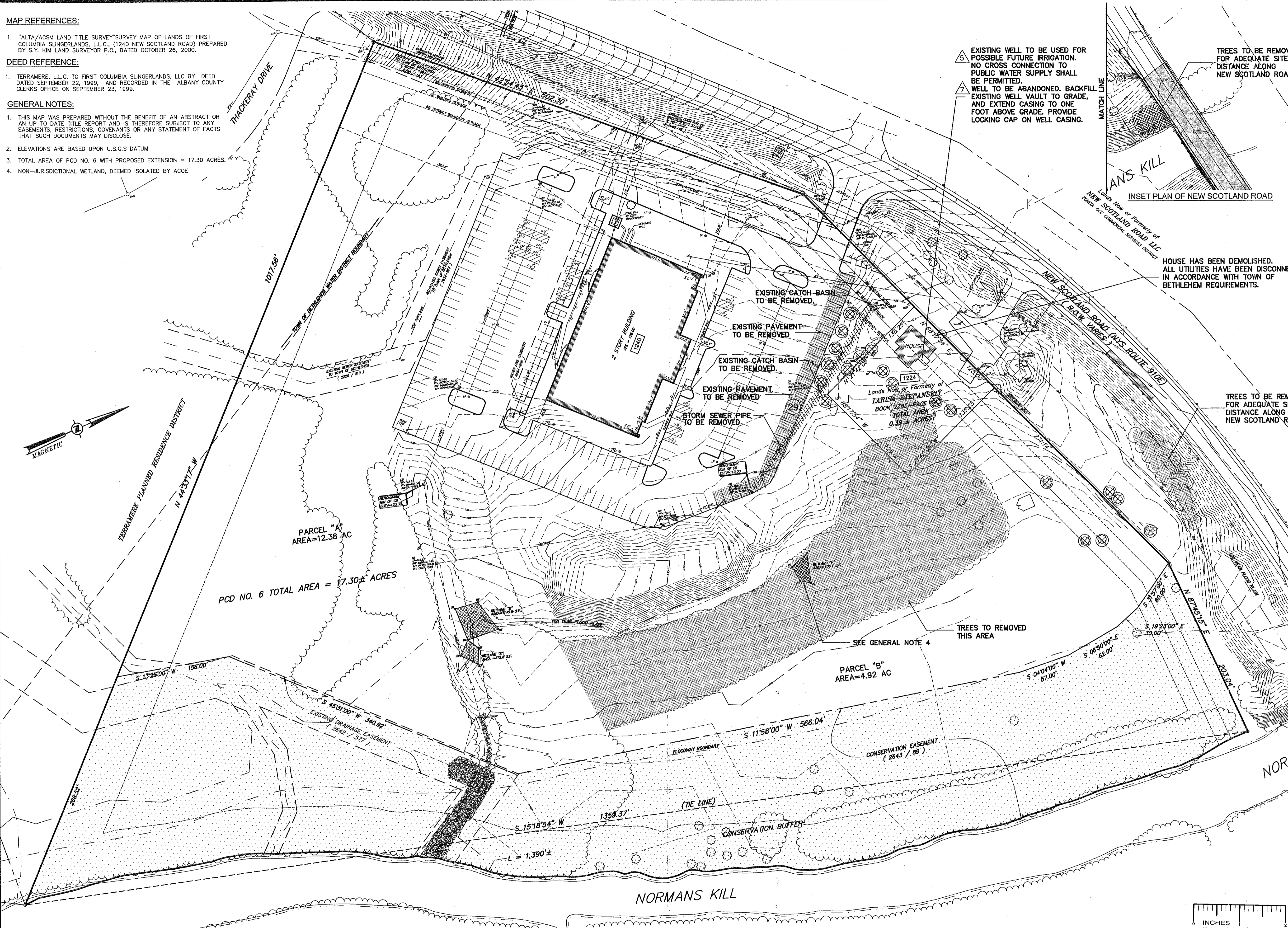
1. THIS MAP WAS PREPARED WITHOUT THE BENEFIT OF AN ABSTRACT OR AN UP TO DATE TITLE REPORT AND IS THEREFORE SUBJECT TO ANY EASEMENTS, RESTRICTIONS, COVENANTS OR ANY STATEMENT OF FACTS THAT SUCH DOCUMENTS MAY DISCLOSE.
2. ELEVATIONS ARE BASED UPON U.S.G.S DATUM
3. TOTAL AREA OF PCD NO. 6 WITH PROPOSED EXTENSION = 17.30 ACRES.
4. NON-JURISDICTIONAL WETLAND, DEEMED ISOLATED BY ACOE

**DEMOLITION NOTES:**

1. SURVEY EXISTING CONDITIONS, VERIFY AND CORRELATE WITH REQUIREMENTS INDICATED TO DETERMINE EXTENT OF SELECTIVE DEMOLITION REQUIRED. ALSO CORRELATE DEMOLITION LIMITS WITH LAYOUT, UTILITY, GRADING AND LANDSCAPE PLANS.
2. MAINTAIN EXISTING UTILITIES TO REMAIN IN SERVICE AND PROTECT THEM AGAINST DAMAGE DURING SELECTIVE DEMOLITION OPERATION.
3. CONDUCT DEMOLITION OPERATIONS AND REMOVE DEBRIS TO ENSURE MINIMUM INTERFERENCE WITH SELECTIVE DEMOLITION OPERATIONS.
4. CONDUCT DEMOLITION OPERATIONS TO PREVENT INJURY TO PEOPLE AND DAMAGE TO ADJACENT BUILDINGS AND FACILITIES TO REMAIN. ENSURE SAFE PASSAGE OF PEOPLE AROUND SELECTIVE DEMOLITION AREA.
5. USE WATER MIST, TEMPORARY ENCLOSURES AND OTHER SUITABLE METHODS TO LIMIT THE SPREAD OF DUST AND DIRT. COMPLY WITH GOVERNING ENVIRONMENTAL PROTECTION REGULATIONS. DO NOT USE WATER WHEN IT MAY DAMAGE EXISTING CONSTRUCTION, SUCH AS ICE, FLOODING, AND POLLUTION.
6. REMOVE AND TRANSPORT DEBRIS IN A MANNER THAT WILL PREVENT SPILLAGE ON ADJACENT SURFACES AND AREAS.
7. CLEAN ADJACENT STRUCTURES AND IMPROVEMENTS OF DUST, DIRT AND DEBRIS CAUSED BY SELECTIVE DEMOLITION OPERATIONS. RETURN ADJACENT AREAS TO CONDITION EXISTING BEFORE START OF SELECTIVE DEMOLITIONS.
8. PROMPTLY DISPOSE OF DEMOLISHED MATERIALS. DO NOT ALLOW DEMOLISHED MATERIALS TO ACCUMULATE ON-SITE. DO NOT BURN DEMOLISHED MATERIALS ON-SITE.
9. TRANSPORT DEMOLISHED MATERIALS OFF OWNER'S PROPERTY AND LEGALLY DISPOSE OF THEM.

**LEGEND:**

- UTP — UTILITY POLE
- OV — GAS VALVE
- WV — WATER VALVE
- SV — SANITARY SEWER VALVE
- HYD — HYDRANT
- CO — CLEAN OUT
- 6" W — WATER MAIN
- G — GAS MAIN
- UC — UNDERGROUND CABLE LINES
- OHC — OVERHEAD CABLE LINES
- UT — UNDERGROUND TELEPHONE LINES
- OHT — OVERHEAD TELEPHONE LINES
- UE — UNDERGROUND ELECTRIC LINES
- OHE — OVERHEAD ELECTRIC LINES
- CBM — CATCH BASIN
- DMH — DRAINAGE MANHOLE
- 18" S — STORM SEWER LINE, SIZE, TYPE & FLOW DIRECTION
- 8" S — SANITARY SEWER LINE, SIZE & FLOW DIRECTION
- 10" FM — SANITARY SEWER FORCE MAIN, SIZE & FLOW DIRECTION
- LP — LIGHT POLE
- SWB — SURFACE WATER BOUNDARY
- WC — WATER COURSE
- 220 — ELEVATION CONTOUR LINE
- DC — DEPRESSION CONTOUR LINE
- 100 — 100 YEAR FLOOD BOUNDARY
- TL — TREE LINE
- TS — TREE TYPE & SIZE
- BO — BUILDING OUTLINE
- TR — TREE TO BE REMOVED



EXISTING WELL TO BE USED FOR POSSIBLE FUTURE IRRIGATION. NO CROSS CONNECTION TO PUBLIC WATER SUPPLY SHALL BE PERMITTED. WELL TO BE ABANDONED. BACKFILL EXISTING WELL VAULT TO GRADE, AND EXTEND CASING TO ONE FOOT ABOVE GRADE. PROVIDE LOCKING CAP ON WELL CASING.

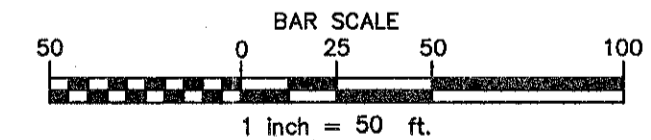
TREES TO BE REMOVED FOR ADEQUATE SITE DISTANCE ALONG NEW SCOTLAND ROAD

HOUSE HAS BEEN DEMOLISHED. ALL UTILITIES HAVE BEEN DISCONNECTED IN ACCORDANCE WITH TOWN OF BETHLEHEM REQUIREMENTS.

TREES TO BE REMOVED FOR ADEQUATE SITE DISTANCE ALONG NEW SCOTLAND ROAD

TREES TO BE REMOVED THIS AREA

MATCH LINE SEE INSERT



APPLICANT:  
**FIRST COLUMBIA L.L.C.**  
 26 Century Hill Drive  
 Latham, New York 12113  
 Tel: (518) 213-1000  
 Fax: (518) 213-1020

**TOWN OF BETHLEHEM PLANNING BOARD APPROVAL**

PLANNING BOARD  
 TOWN OF BETHLEHEM  
 ALBANY COUNTY, NEW YORK

This plat APPROVED subject to such conditions as are stated in Building Project Approval (BPIA)

No. 34, dated 11-20-04  
*Parker D. Mathison*

Title CHAIRMAN  
 Date MAR 30 2005

rev.	date	description
12	11/12/04	REVISIONS PER TOWN COMMENTS DATED 11/4/04
11	9/7/04	REVISIONS PER TOWN COMMENTS DATED 8/12/04
10	8/18/04	REVISIONS PER CLIENTS COMMENTS DATED 6/14/04
9	6/7/04	REVISIONS WITH NEW BUILDING FOOT PRINT
8	6/26/03	REVISIONS PER TOWN COMMENTS DATED 5-14-03
7	2/03/03	REVISIONS PER TOWN COMMENTS DATED 1-27-03 & 1-29-03
6	12/20/02	REVISIONS PER TOWN COMMENTS DATED 9-10-02
5	6/26/02	PRE CONSTRUCTION REVISIONS
4	1/25/02	REVISIONS PER TOWN COMMENTS DATED 1-16-02
3	1/04/02	REVISIONS PER TOWN COMMENTS DATED 12-14-01 & 12-21-01
2	9/12/01	REVISIONS PER TOWN COMMENTS DATED 9-12-01
1	8/01/01	REVISIONS PER TOWN COMMENTS DATED 7-19-01

PROPOSED AMENDMENT TO  
 PLANNED COMMERCIAL DISTRICT NO. 6  
**NEW SCOTLAND ROAD  
 COMMERCIAL BUSINESS PARK**

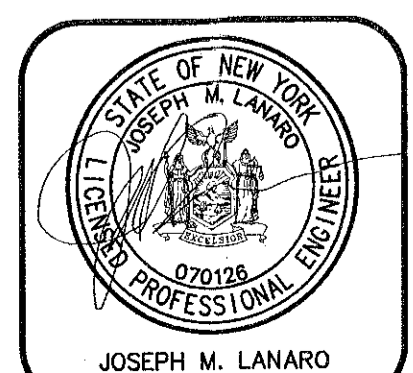
EXISTING CONDITIONS AND DEMOLITION PLAN

TOWN OF BETHLEHEM, ALBANY COUNTY, NEW YORK

drawn	JMB	checked	JML
date	7/8/04	scale	AS NOTED
project no.	30124.00		
sheet no.			SP1

ALL RIGHTS RESERVED. COPY OR REPRODUCTION OF THIS PLAN OR ANY PORTION THEREOF IS PROHIBITED WITHOUT THE WRITTEN PERMISSION OF THE DESIGN ENGINEER, SURVEYOR, OR ARCHITECT.

ALTERATION OF THIS DRAWING, EXCEPT BY A LICENSED P.E. IS ILLEGAL. ANY ALTERATION BY A P.E. MUST BE INDICATED AND BEAR THE APPROPRIATE SEAL, SIGNATURE AND DATE OF ALTERATION.



**THE Chazen COMPANIES**  
 Engineers/Surveyors  
 Planners  
 Environmental Scientists

**CHAZEN ENGINEERING & LAND SURVEYING CO., P.C.**

Dutchess County Office: 21 Fox Street, Poughkeepsie, New York 12601 Phone: (845) 454-3900  
 Capital District Office: 22 Gurley Avenue, Troy, New York 12182 Phone: (518) 235-8050  
 Orange County Office: 263 Route 176, Newburgh, New York 12550 Phone: (845) 567-1133  
 North Country Office: 110 Glen Street, Glens Falls, New York 12801 Phone: (518) 812-0013