

ALBANY COUNTY DEPARTMENT OF HEALTH

This is to certify that the proposed arrangements for water supply and sewerage for the above described property are approved subject to the conditions listed in letter of this date, and in accordance with Article X of the Albany County Sanitary Code. Consent is hereby given for the filing of this map in the Office of the Albany County Clerk.

Date FEB 20 1980
John M. Gove, Mayor
Commissioner of Health

Dir. Div. Environmental Health Services

Town Planning Board Approval

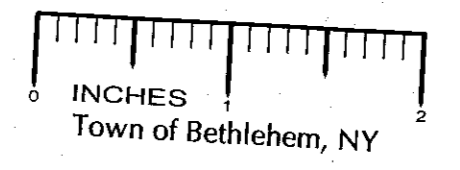
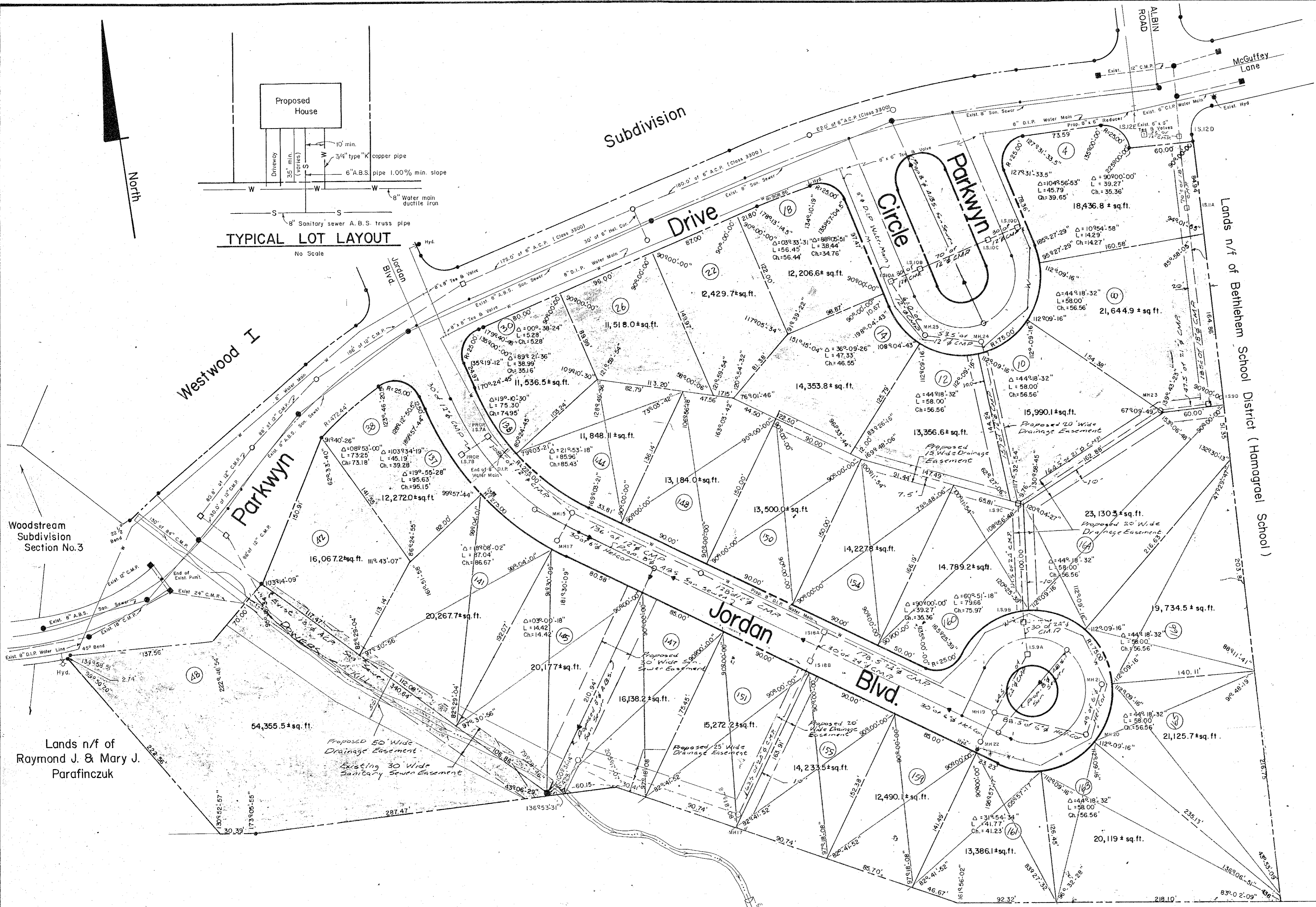
PLANNING BOARD
TOWN OF BETHELEM
ALBANY COUNTY, NEW YORK

FINAL PLAT APPROVAL

When signed by the duly authorized officer of the Planning Board, this endorsement constitutes final approval of this Plat.

Signed: *William F. Weber*
Title: CHAIRMAN
Date: FEB 21 1980

See also Certificate of Approval of Final Plat No. 10-B-F



- Notes:**
- Subdivision located in "AA" Zone.
 - All easements shown to be granted to the Town of Bethlehem.
 - Elevations refer to U.S.G.S. datum. Bench mark no. 107, Bethlehem Sewer District, hydrant n.p.o.a. Elev. 207.97.
 - Proposed 8" Ductile iron water main shown thus w—w—w. Water main material, size and location determined by Water District No. 1, Town of Bethlehem.
 - Water lines will be constructed above the sanitary sewer lines.
 - Plans for Sanitary sewer and water supply facilities in this subdivision have been submitted to and approved by the Albany County Health Department.
 - See Typical Lot Layout for Sanitary sewer & water line connection to utilities.
 - No footing, roof or cellar drains to be connected to sanitary sewer facilities.
 - Minimum separation of (1'-6") vertically and (10'-0") horizontally required between sanitary sewer and water facilities.
 - Minimum separation of (1'-6") required between water and storm sewer facilities whether over or under.
 - STORM SEWER AND GRADING PLAN FOR THIS SUBDIVISION HAVE BEEN APPROVED BY THE TOWN OF BETHELEM ENGINEERING DEPT.
 - THE ALBANY COUNTY HEALTH DEPT. STAMP AND SIGNATURE OF APPROVAL APPLIED TO THIS PLAN IS FOR THE SHADDED LOTS FRONTING ON PARKWYN DRIVE AND PARKWYN CIRCLE ONLY.

Final Review November 9, 1979

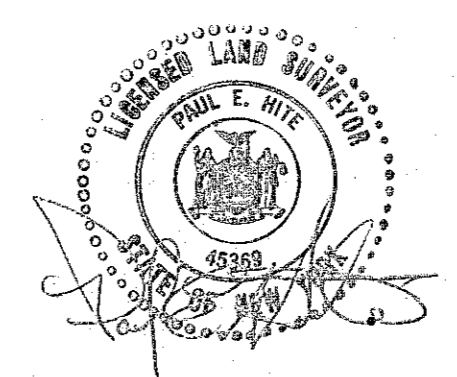
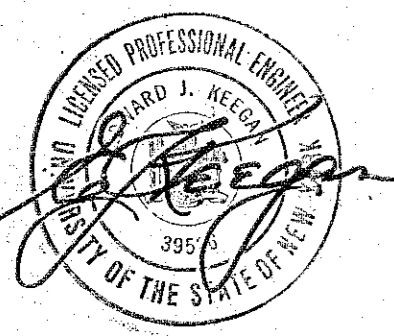
Delmar By — Pass

" SUBDIVISION DEVELOPMENT NOTE "

Development of Subdivision proposed for Two (2) phases, shaded area denotes phase No. (1)

CERTIFICATION

I hereby certify to National Commercial Bank and Trust Company and to Klersy Building Corporation that all dimensions shown are correct.



Proposed Subdivision
" WESTWOOD II "
Property of
Klersy Building Corp.

Town of Bethlehem

Albany County New York
Scale: 1" = 50' August 25, 1978

Map Prepared by:
PAUL E. HITE
Licensed Land Surveyor Delmar, N.Y.