

MAP REFERENCES

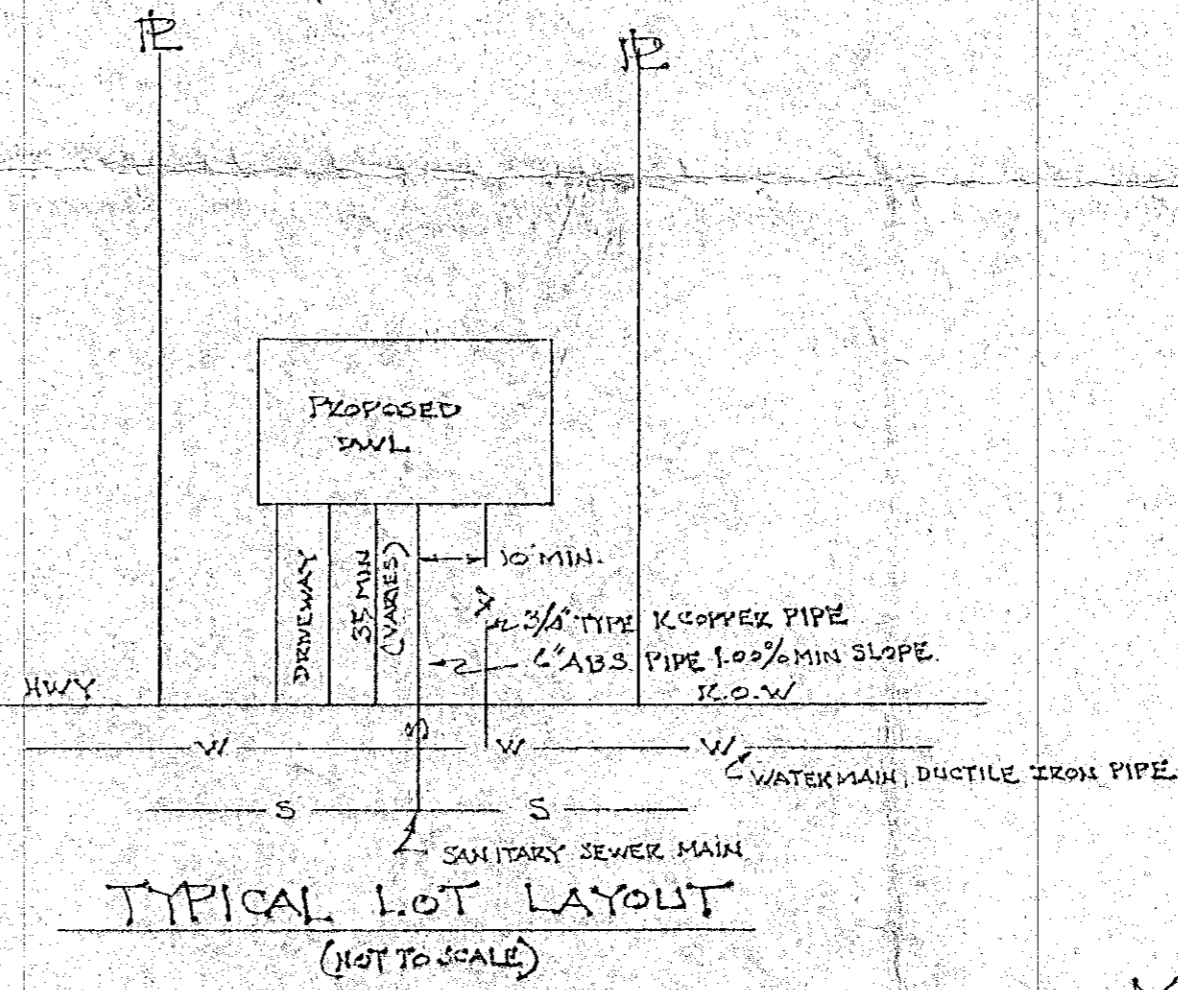
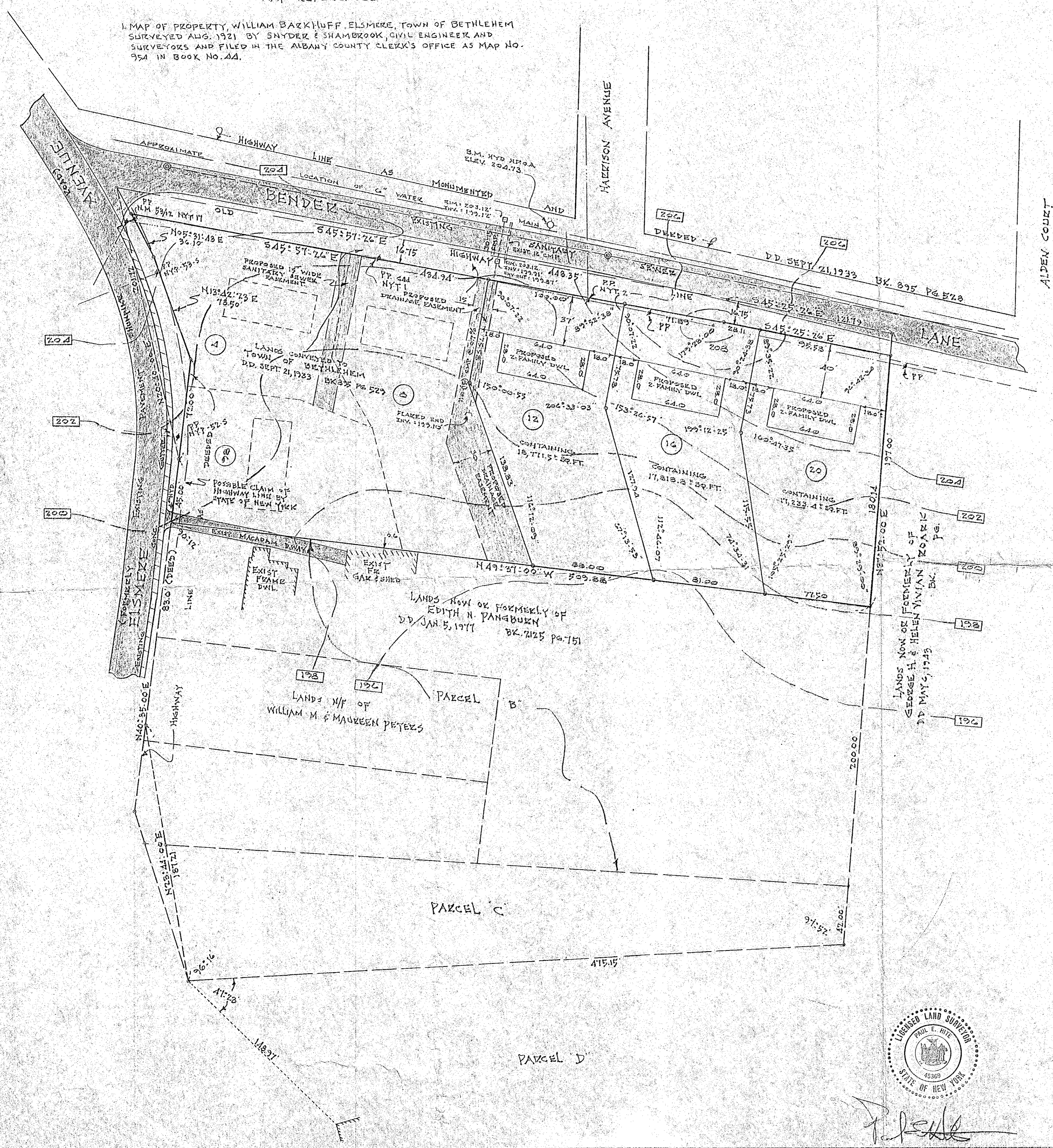
1. MAP OF PROPERTY, WILLIAM BARKHUFF ELSMERE, TOWN OF BETHLEHEM SURVEYED AUG. 1921 BY SNYDER & SHAMBROOK, CIVIL ENGINEER AND SURVEYORS AND FILED IN THE ALBANY COUNTY CLERK'S OFFICE AS MAP NO. 954 IN BOOK NO. 44.

TOWN PLANNING BOARD  
TOWN OF BETHLEHEM  
ALBANY COUNTY, NEW YORK  
**PRELIMINARY PLAT APPROVAL**  
This plat approved subject to modifications stated in Certificate of Approval of Preliminary Plat No. 2272, dated FEB 15 1978. This approval does NOT authorize the filing of this plat in the Office of the Albany County Clerk, nor does it authorize the issuance of Building Permits.  
*Alan J. Crill*  
Secretary to the Board  
Dated FEB 22 1978

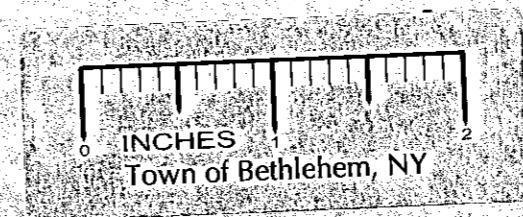
ALBANY COUNTY HEALTH DEPARTMENT APPROVAL:

"NOTES"

1. MAP PREPARED FROM AN ACCURATE FIELD SURVEY, DEEDS AND MAPS OF RECORD.
2. SUBJECT TO EASEMENTS AND RIGHTS-OF-WAY OF RECORD.
3. SUBJECT TO A COMPLETE AND UP TO DATE TITLE SEARCH.
4. BEARING BASE FROM MAP REFERENCE NO. 1.
5. PARCELS A THROUGH D ARE AS INDICATED ON MAP REFERENCE NO. 1.
6. FACILITIES FOR SANITARY SEWER AND WATER CONNECTION EXIST FOR THE PROPOSED LOTS. SEE MAP AND TYPICAL LOT LAYOUT.
7. EASEMENTS SHOWN TO BE GRANTED TO TOWN OF BETHLEHEM.
8. BENCH MARK - NUT POINT OF ALBANY HYDRANT AT INTERSECTION OF BENDER LANE AND HAZELTON AVENUE.



Preliminary Plat  
MAP OF PROPOSED SUBDIVISION  
"THE PINES"  
PROPERTY OF  
A.T. ZAITNER & SON, INC.  
TOWN OF BETHLEHEM  
COUNTY: ALBANY STATE: NEW YORK  
SCALE: 1"=40' DATE: NOV. 9, 1977



SURVEY AND MAP BY  
PAUL E. HITE  
LICENSED LAND SURVEYOR  
DELMAR, N.Y.

REVISIONS:  
1. Lot Numbers on Bender Lane revised.

*Paul E. Hite*