

ALBANY COUNTY HEALTH DEPARTMENT APPROVAL

ALBANY COUNTY DEPARTMENT OF HEALTH

This is to certify that the proposed arrangements for water supply and sewerage for Union Avenue South Extension, Section 2, are approved subject to the conditions listed in letter of this date, and in accordance with Article X of the Albany County Sanitary Code. Consent is hereby given for the filing of this map in the Office of the Albany County Clerk.

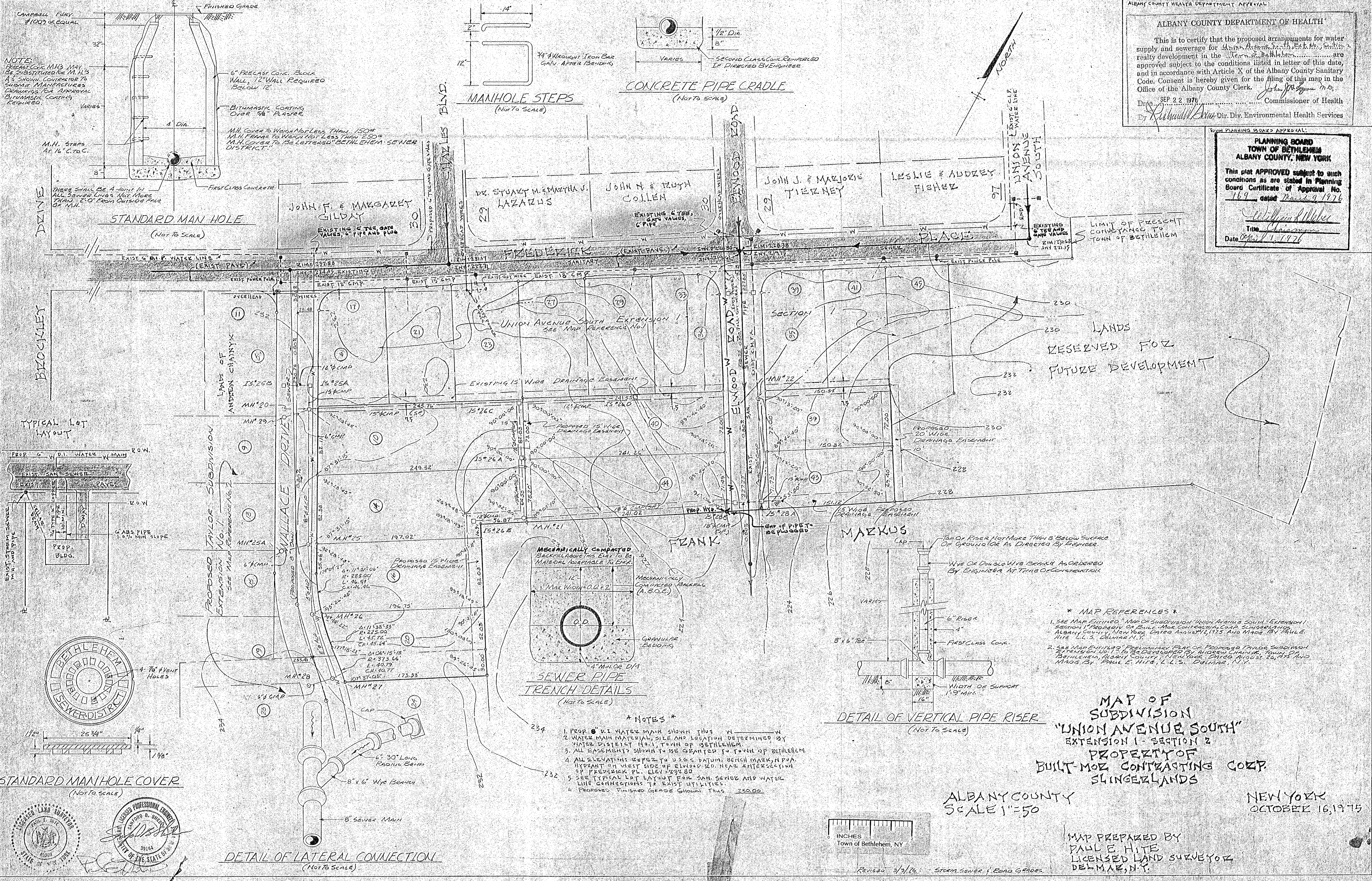
SEP 22 1976
Commissioner of Health

Dir. Div. Environmental Health Services

PLANNING BOARD
TOWN OF BETHLEHEM
ALBANY COUNTY, NEW YORK

This plat APPROVED subject to such conditions as are stated in Planning Board Certificate of Approval No. 169 dated Monday, 9/14/76

William K. Weber
Title Chairman
Date Sept 14, 1976



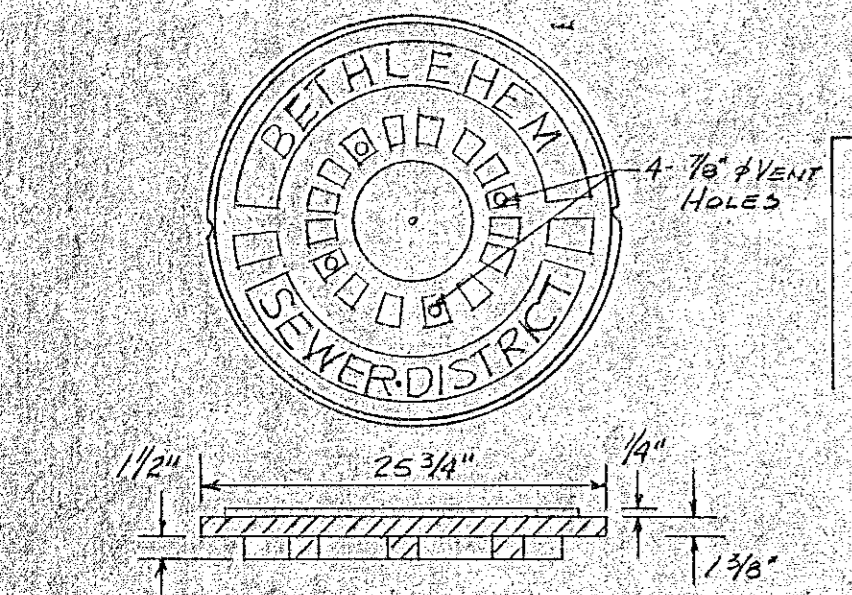
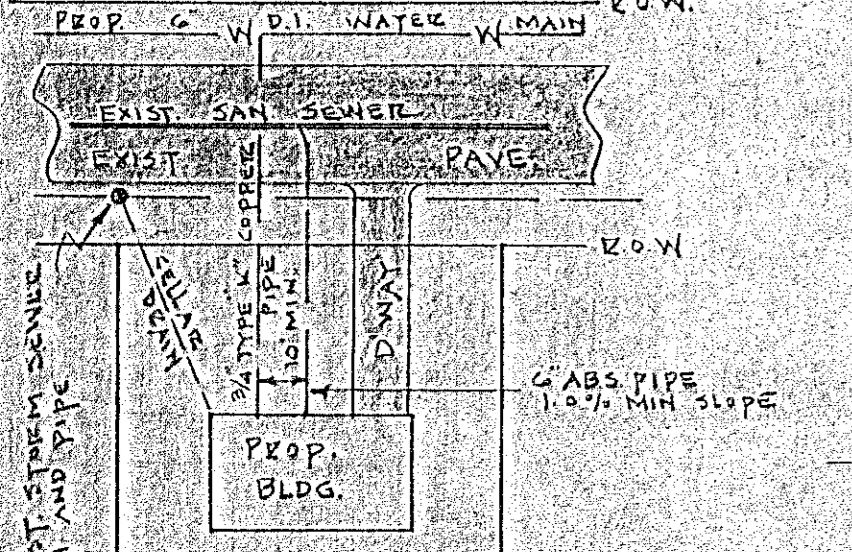
NOTE:
PRECAST CONC. M.H.'S MAY BE SUBSTITUTED FOR M.H.'S AS SHOWN CONTINGENT UPON SUPPLIER'S MANUFACTURING DRAWINGS FOR APPROVAL BY ENGINEER. CONCRETE COATING REQUIRED.

STANDARD MAN HOLE
(Not To Scale)

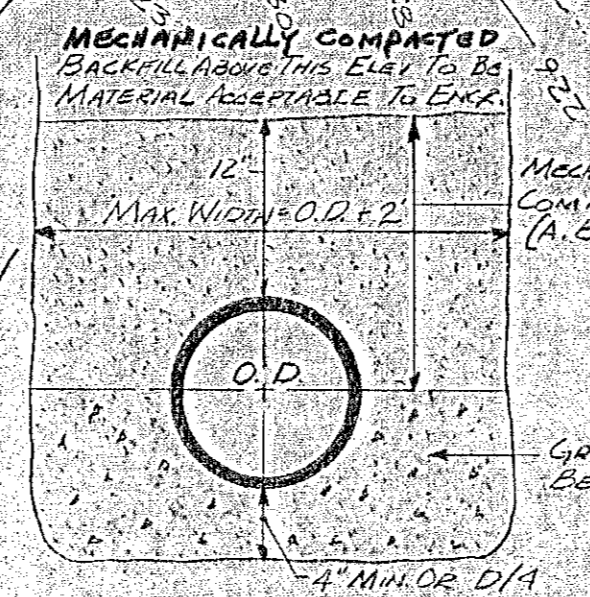
MANHOLE STEPS
(Not To Scale)

CONCRETE PIPE CRADLE
(Not To Scale)

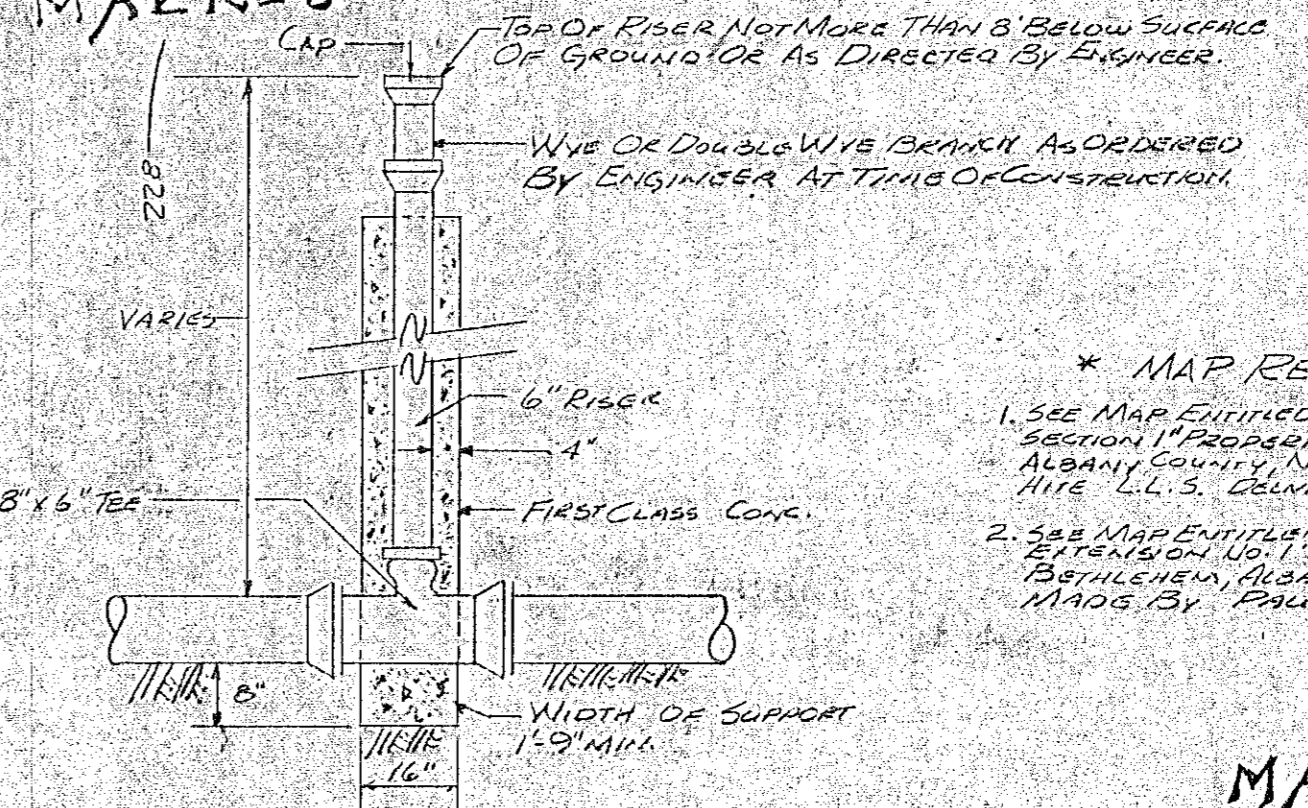
TYPICAL LOT LAYOUT



STANDARD MANHOLE COVER
(Not To Scale)



SEWER PIPE TRENCH DETAILS
(Not To Scale)



DETAIL OF VERTICAL PIPE RISER
(Not To Scale)

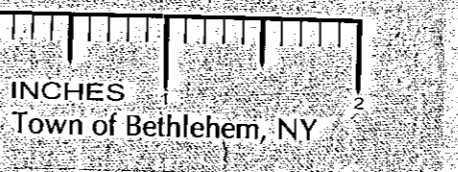
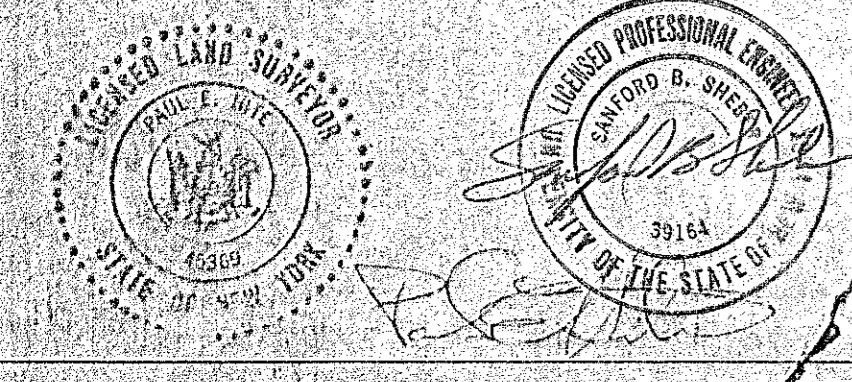
- * NOTES *
1. PROP. 6" DI. WATER MAIN SHOWN THIS W. N. W. WATER MAIN MATERIAL, SIZE AND LOCATION DETERMINED BY WATER DISTRICT NO. 1, TOWN OF BETHLEHEM.
 2. ALL EASEMENTS SHOWN TO BE GRANTED TO TOWN OF BETHLEHEM.
 3. ALL ELEVATIONS REFER TO U.S. DATUM. BENCH MARK, N.P.A. HYDRAULIC PL. ELEV. 230.00.
 4. SEE TYPICAL LOT LAYOUT FOR SAN. SEWER AND WATER LINE CONNECTIONS TO EXIST. UTILITIES.
 5. PROPOSED FINISHED GRADE SHOWN THIS 230.00.

- * MAP REFERENCES *
1. SEE MAP ENTITLED "MAP OF SUBDIVISION 'UNION AVENUE SOUTH' EXTENSION I - SECTION 1" PREPARED BY BUILT-MOR CONTRACTING CORP. SINGERLANDS, ALBANY COUNTY, NEW YORK, DATED AUGUST 26, 1975 AND MADE BY PAUL E. HITE, L.L.S., DELMAR, N.Y.
 2. SEE MAP ENTITLED "PRELIMINARY PLAN OF PROPOSED TAYLOR SUBDIVISION EXTENSION NO. 1 TO BE DEVELOPED BY ANDREW CHAINIK, TOWN OF BETHLEHEM, ALBANY COUNTY, NEW YORK, DATED AUGUST 26, 1975 AND MADE BY PAUL E. HITE, L.L.S., DELMAR, N.Y."

MAP OF
SUBDIVISION
"UNION AVENUE SOUTH"
EXTENSION I - SECTION 2
PROPERTY OF
BUILT-MOR CONTRACTING CORP.
SINGERLANDS

ALBANY COUNTY
SCALE 1"=50

NEW YORK
OCTOBER 16, 1975



Revised 3/9/76 - SEWER SEWER & ROAD GRADES

MAP PREPARED BY
PAUL E. HITE
LICENSED LAND SURVEYOR
DELMAR, N.Y.