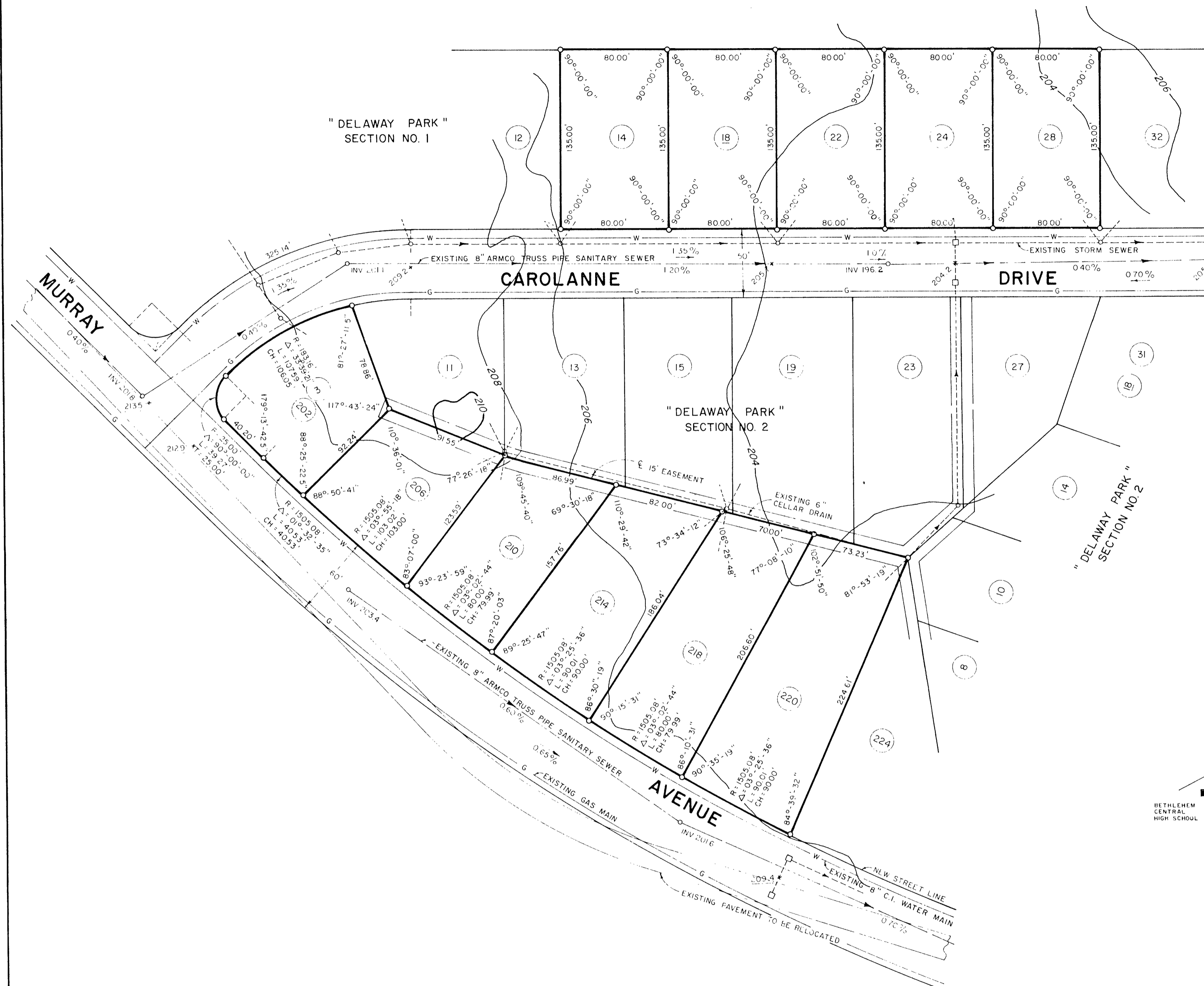
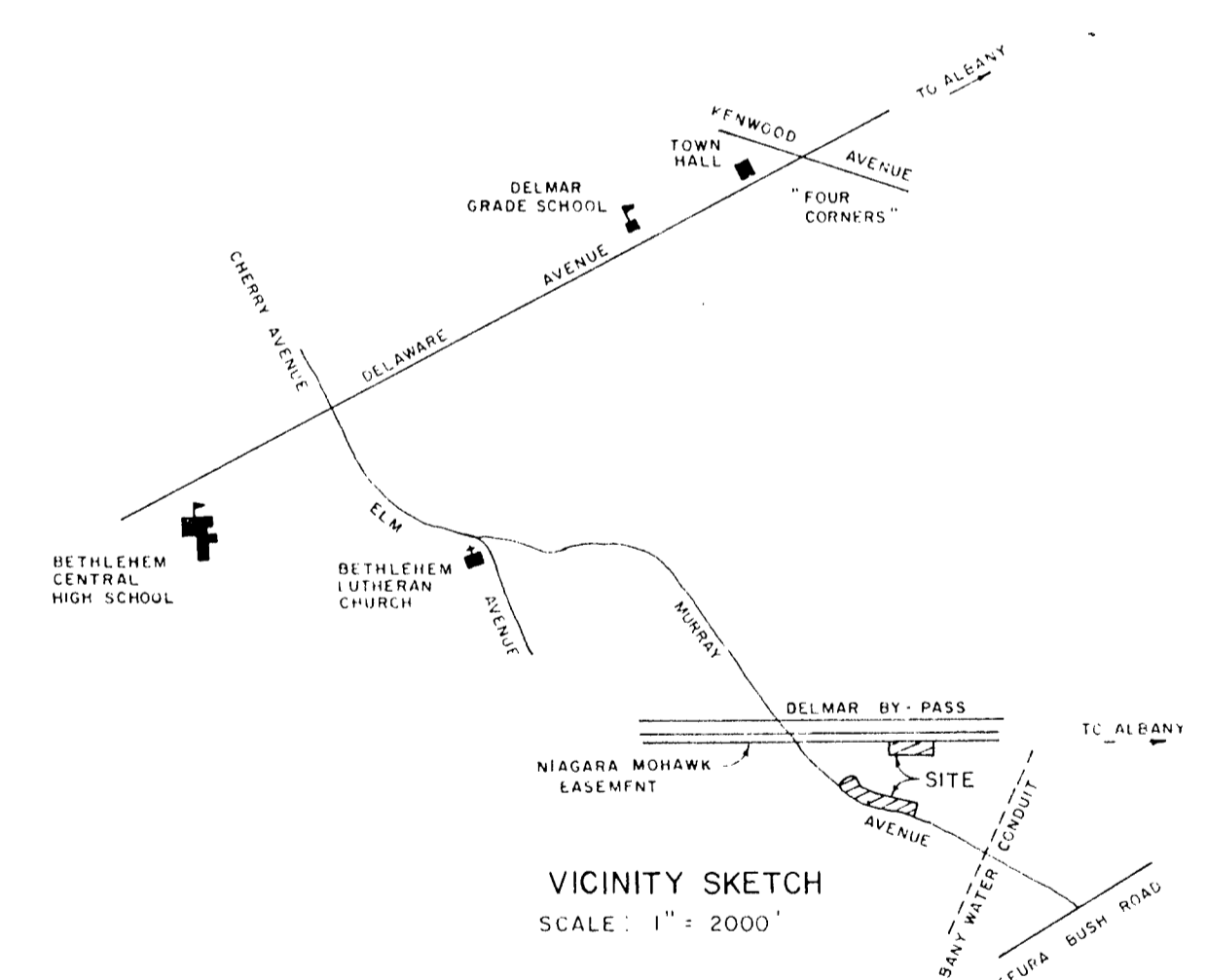
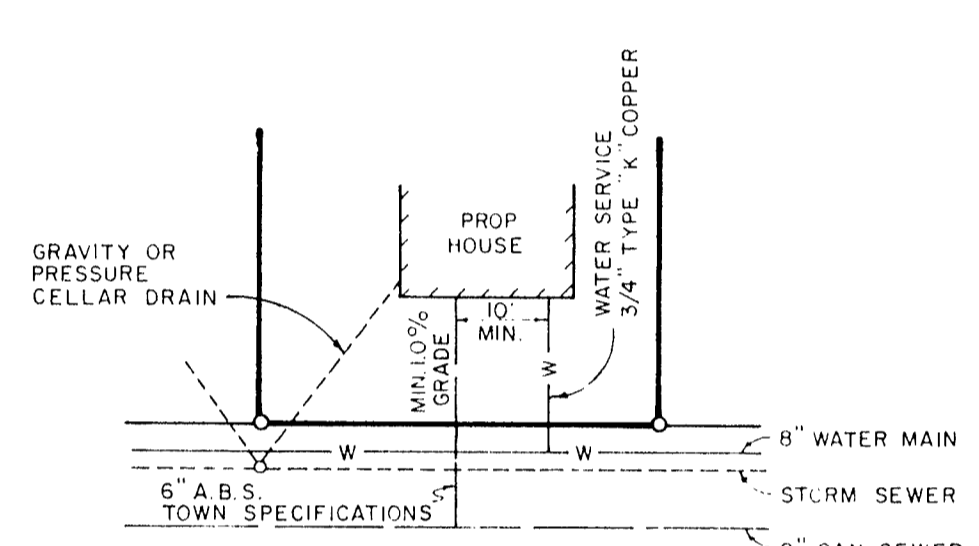


LANDS OF
NIAGARA MOHAWK POWER CORPORATION



- NOTES
- 1 - BENCH MARK - TOP OF R.R. SPIKE IN N.M.P. POLE 28 AT FULLER PROPERTY 242 MURRAY AVENUE EL 210.46 U.S.G.S. DATUM.
 - 2 - LOT NUMBERS TO BE USED AS STREET NUMBERS, FOR CORNER LOTS USE NUMBER FOR STREET WHICH HOUSE FACES.
 - 3 - EASEMENTS SHOWN TO BE GRANTED TO TOWN OF BETHLEHEM.
 - 4 - CONTOUR INTERVAL - 2 FEET
 - 5 - 6" ABS. LATERAL CONNECTIONS FOR SANITARY SEWER CONSTRUCTED TO STREET LINE OF LOTS SHOWN.
 - 6 - 204.2 EXISTING GRADE
209.4 PROPOSED FINISHED GRADE
 - 7 - ELEVATIONS SHOWN TAKEN FROM EXISTING PLANS AND MAPS.
 - 8 - EXISTING SANITARY SEWER SHOWN DESIGNED AND CONSTRUCTION SUPERVISED BY J. KENNETH FRASER AND ASSOCIATES, CONSULTING ENGINEERS FOR CONTRAL 43 BETHLEHEM SEWER DISTRICT.

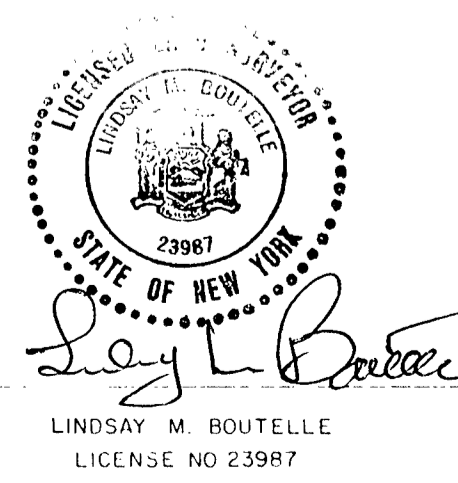


MAP OF
"DELAWAY PARK"
SECTION NO. 3
PROPERTY OF
WILLIAMS BROTHERS BUILDERS, INC.
TOWN OF BETHLEHEM

ALBANY CO. NEW YORK
SCALE: AS SHOWN SEPT. 24, 1976



PLAN BY
EDWARD W. BOUTELLE AND SON
CIVIL ENGINEERS
SURVEYORS
DELMAR
N. Y.



PLANNING BOARD APPROVAL

PLANNING BOARD
TOWN OF BETHLEHEM
ALBANY COUNTY, NEW YORK

This plat APPROVED subject to such conditions as are stated in Planning Board Certificate of Approval No. 174, dated OCT 25 1976

William R. Weber
Title CHAIRMAN
Date NOV 15 1976

ALBANY COUNTY HEALTH DEPARTMENT APPROVAL

DEPARTMENT OF HEALTH

Proposed arrangements for water service for Delaway Park, Section No. 3, Town of Bethlehem, Albany County, New York, are hereby approved as shown on this plat, and the necessary sanitary connections to the existing sewer main in the town of Bethlehem, Albany County, New York, are approved as shown on this plat.

NOV 2 1976
J. Kenneth Fraser, M.D.
Commissioner of Health