

ERDMAN ANTHONY

11 CENTURY HILL DRIVE, SUITE 105
Latham, NY 12110
Telephone (518)783-1205
Facsimile (518)783-0374
www.erdmananthony.com



DATE _____ DATE _____

NOTE: UNAUTHORIZED ALTERATION OR ADDITION TO THIS DRAWING IS A VIOLATION OF THE NEW YORK STATE EDUCATION LAW ARTICLE 145, SECTION 7209.

REVISIONS			
NO.	DESCRIPTION	BY	DATE
1	REVISED DETAIL	RLD	3/12/13

ALL RIGHTS RESERVED: No part of this document may be reproduced, stored in a retrieval system, or transmitted, in any form or by any means electronic, mechanical, photocopying, recording, or otherwise without the prior written authorization of ERDMAN ANTHONY.

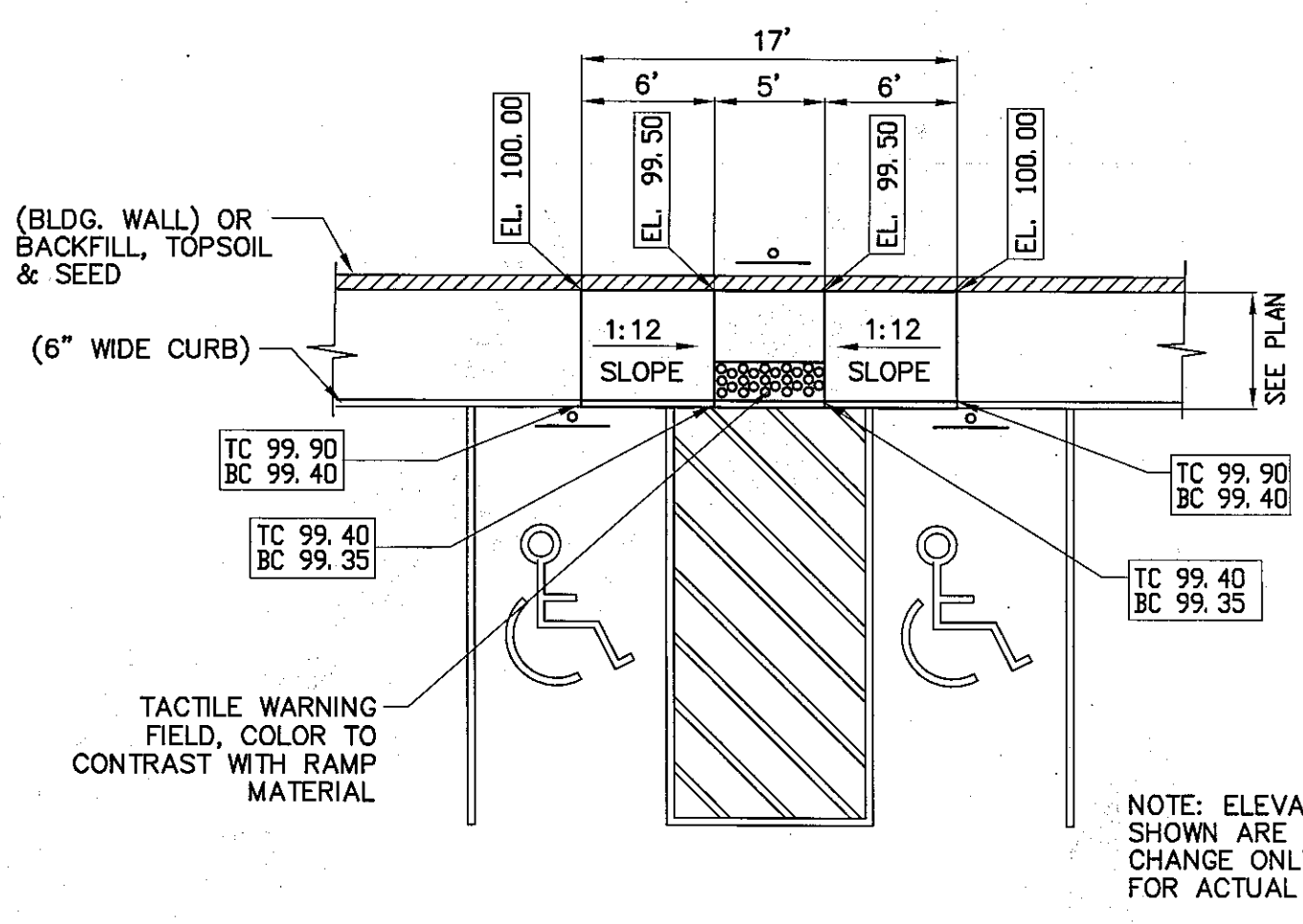
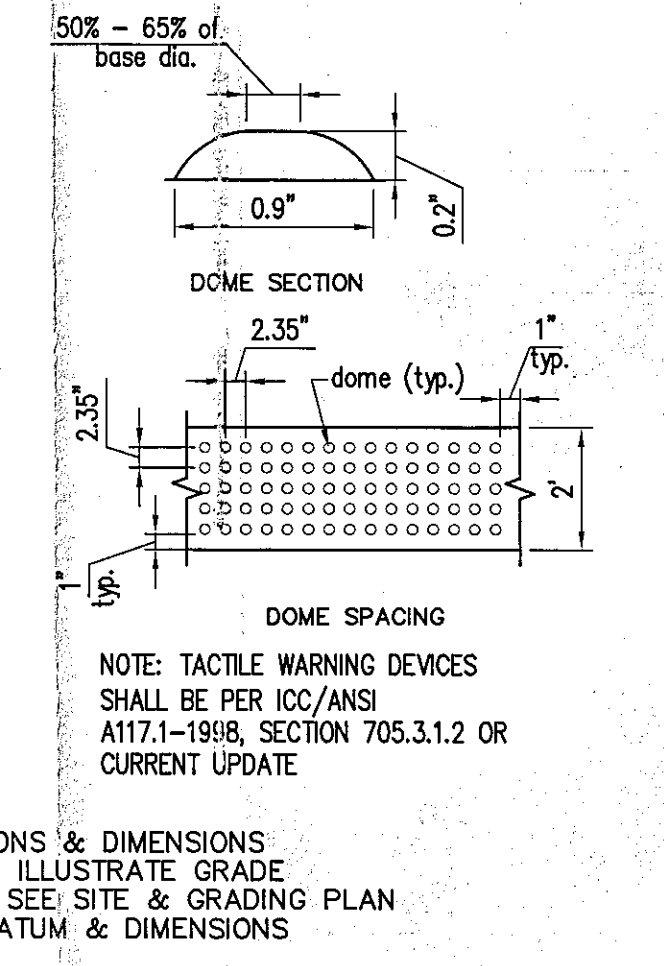
COPYRIGHT ©2013 Erdman Anthony

CLIENT:
BENDERSON DEVELOPMENT COMPANY, LLC

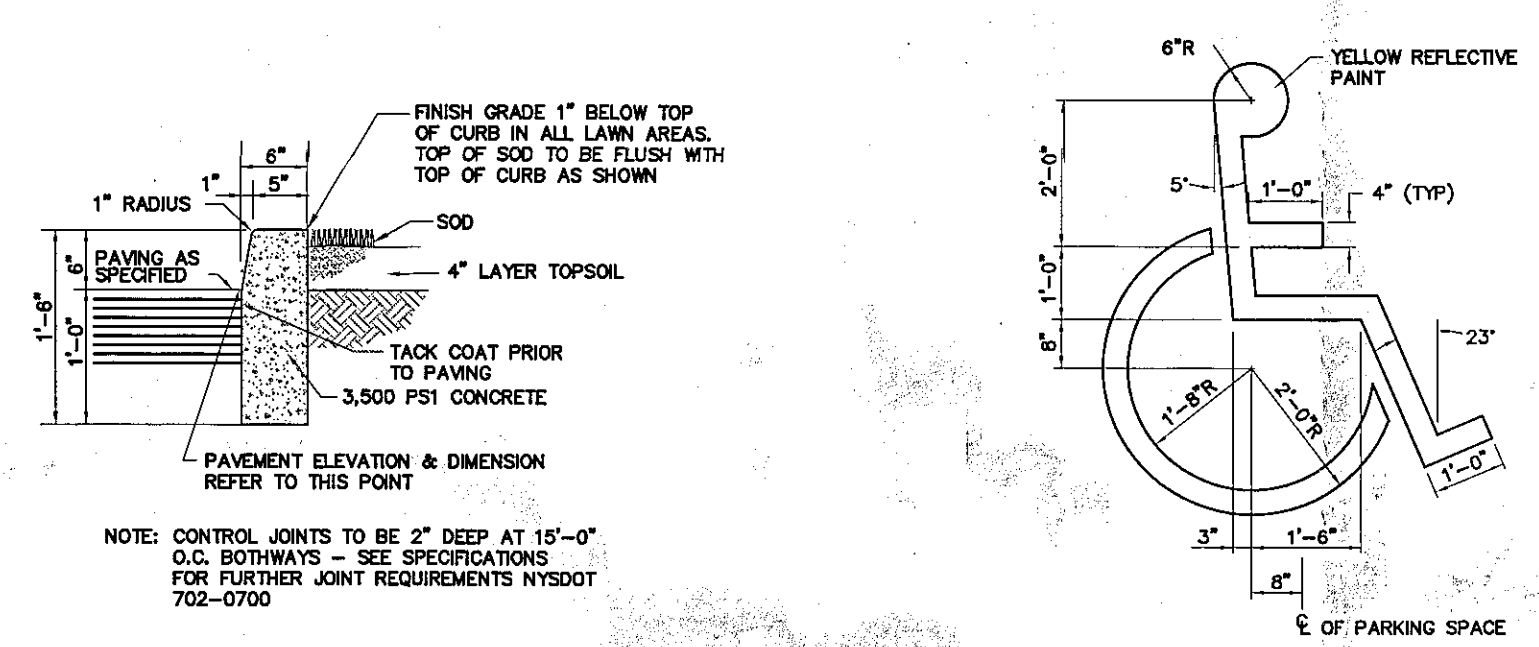
PROJECT NAME:
GLENMONT PLAZA - 380 FEURA BUSH ROAD PROPOSED PAD SITE

DRAWING TITLE:
SITE DETAILS

SCALE: NTS	DATE: FEB. 2013
DES. BY: RLD	DR. BY: MFJ
CK'D BY: RLD	EA PROJECT NO. 1700C.55
SHEET NO. 6 OF 13	DRAWING NO. C4.1

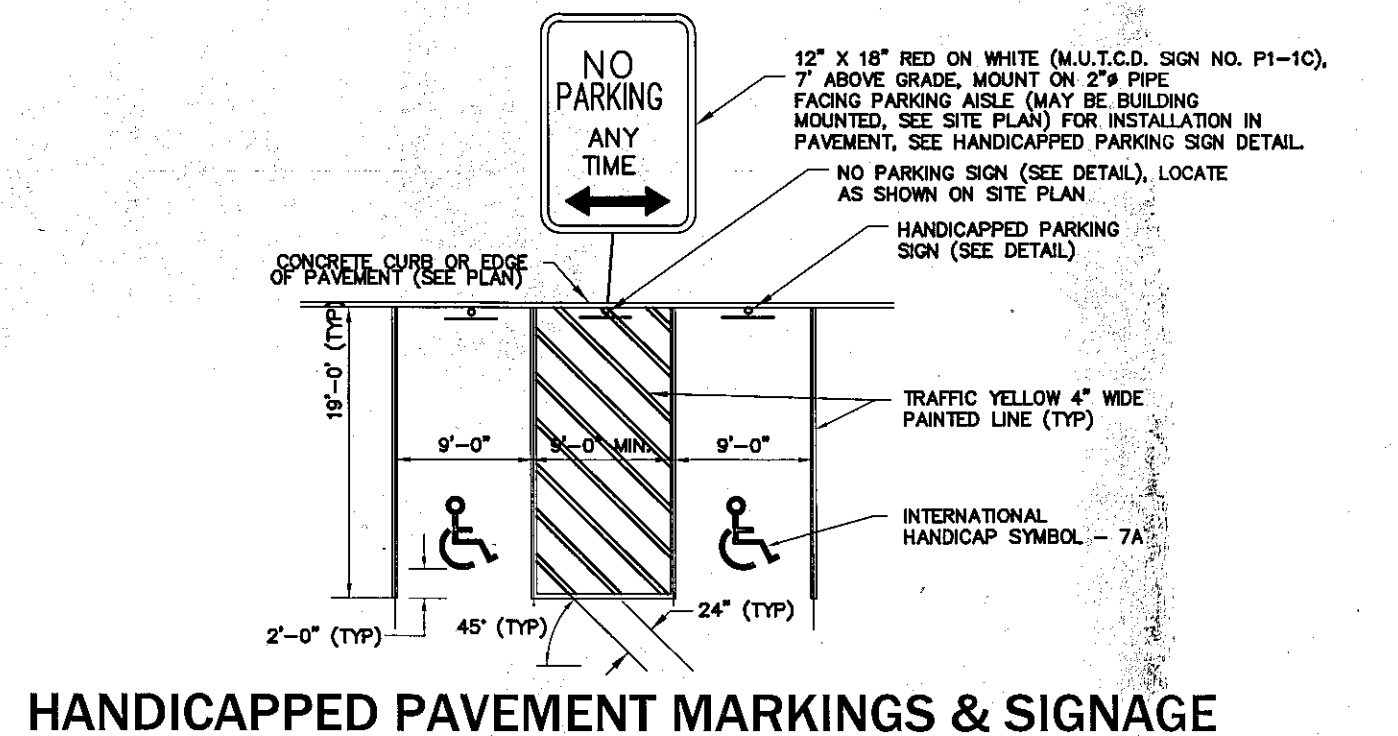


HANDICAPPED PAVEMENT RAMP

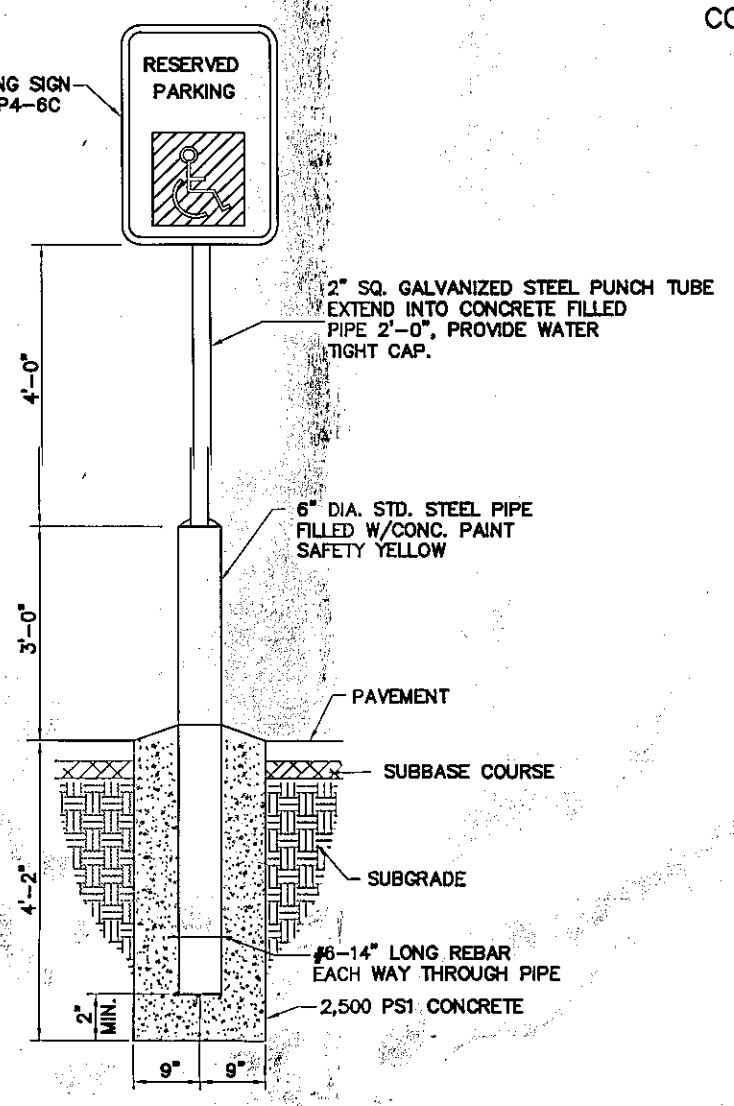


CONCRETE CURB

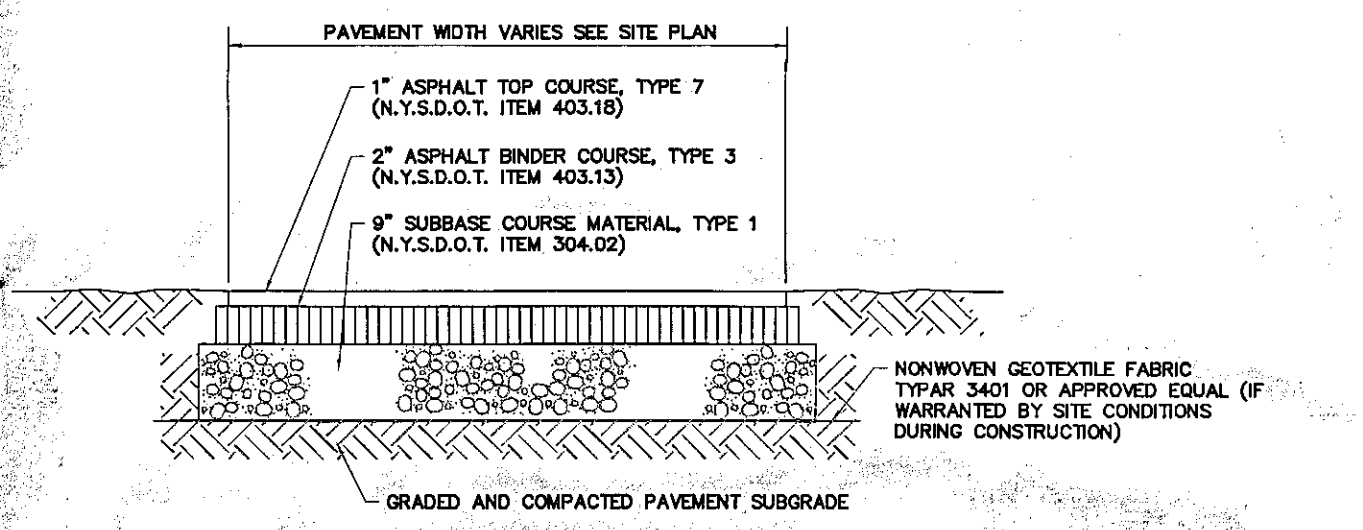
INTERNATIONAL HANDICAP SYMBOL



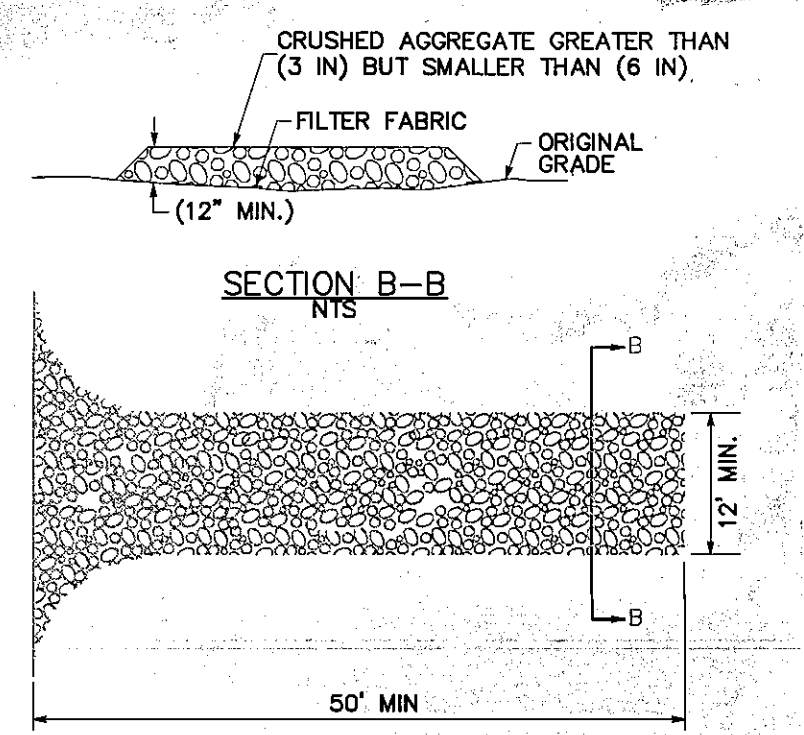
HANDICAPPED PAVEMENT MARKINGS & SIGNAGE



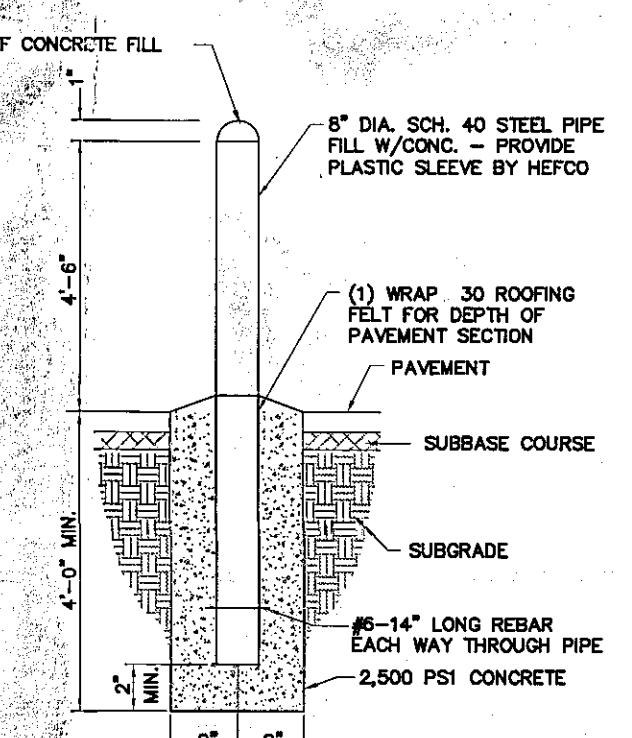
HANDICAPPED PARKING SIGN



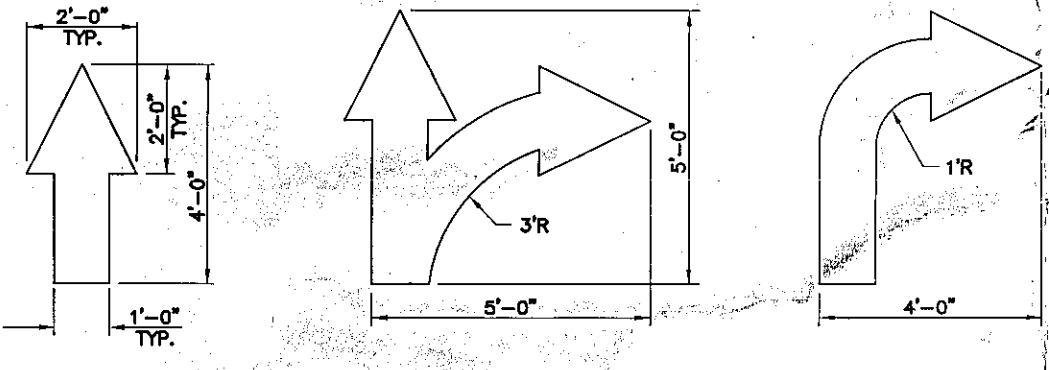
STANDARD ASPHALT SECTION



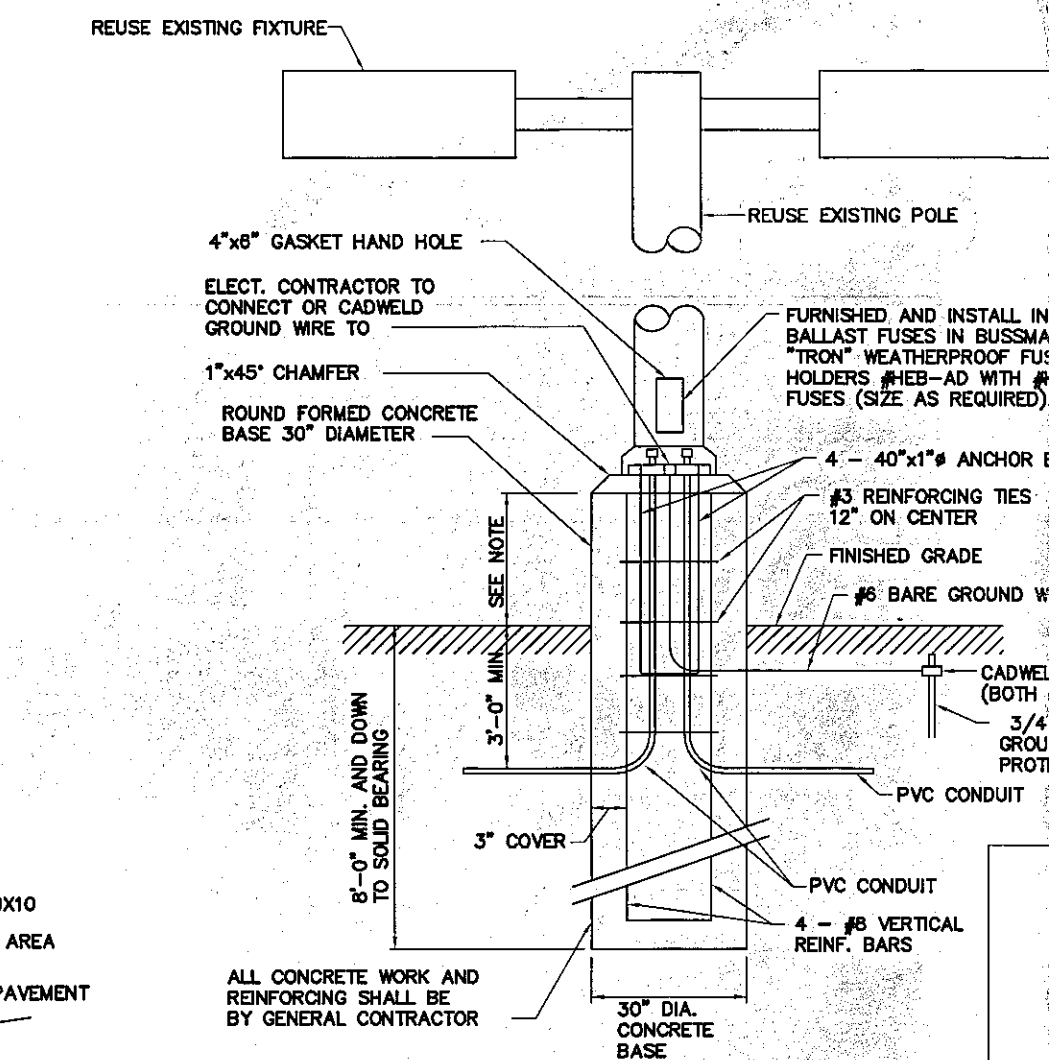
STABILIZED CONSTRUCTION ENTRANCE DETAIL



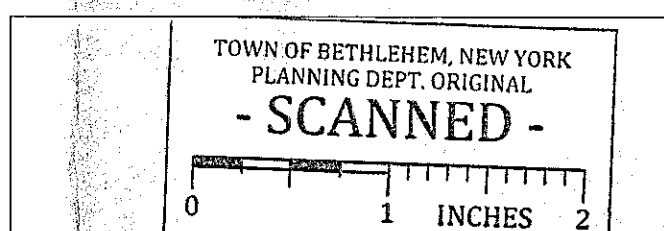
PIPE BOLLARD



PAINTED TRAFFIC ARROWS

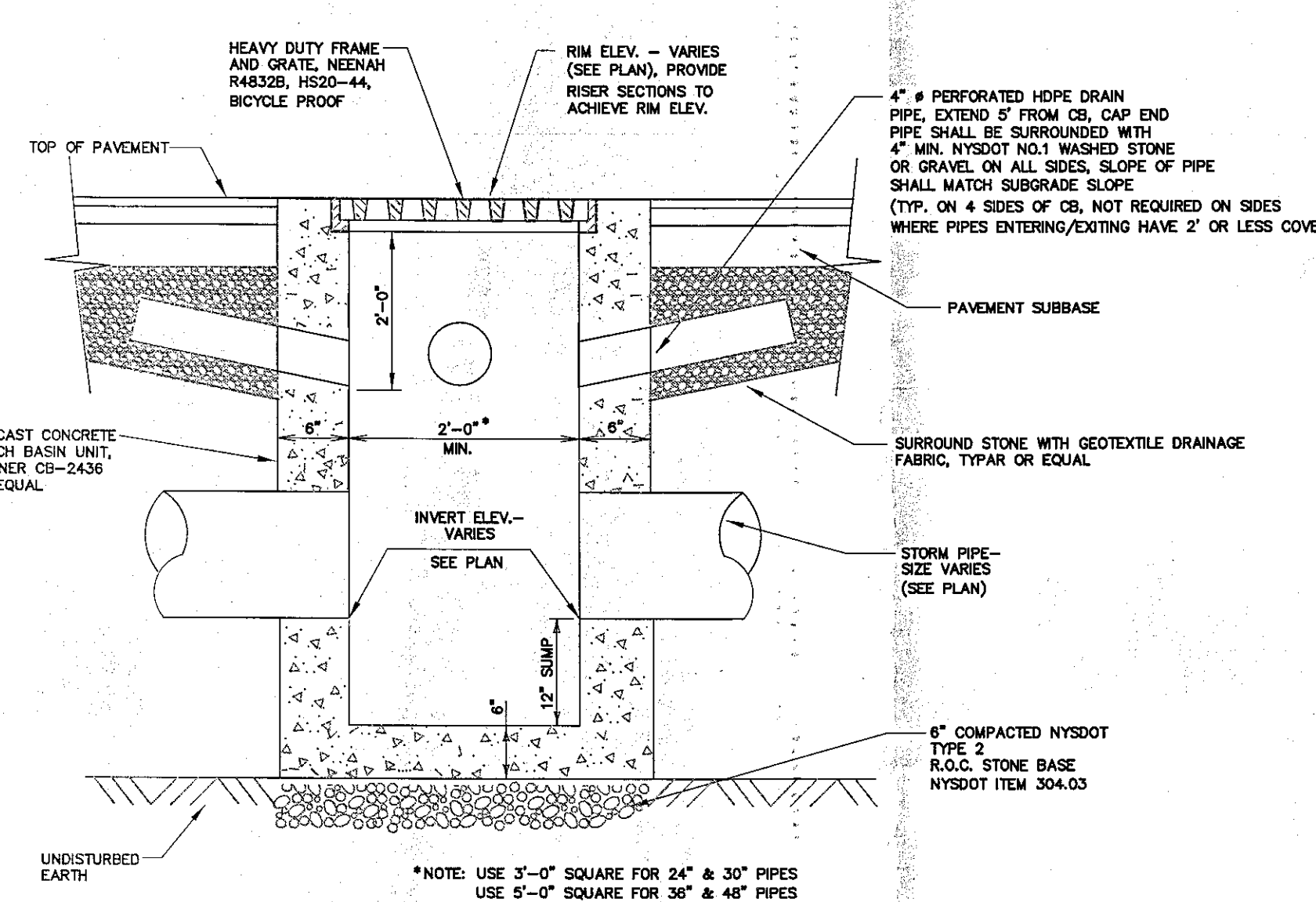


LIGHT POLE FOUNDATION

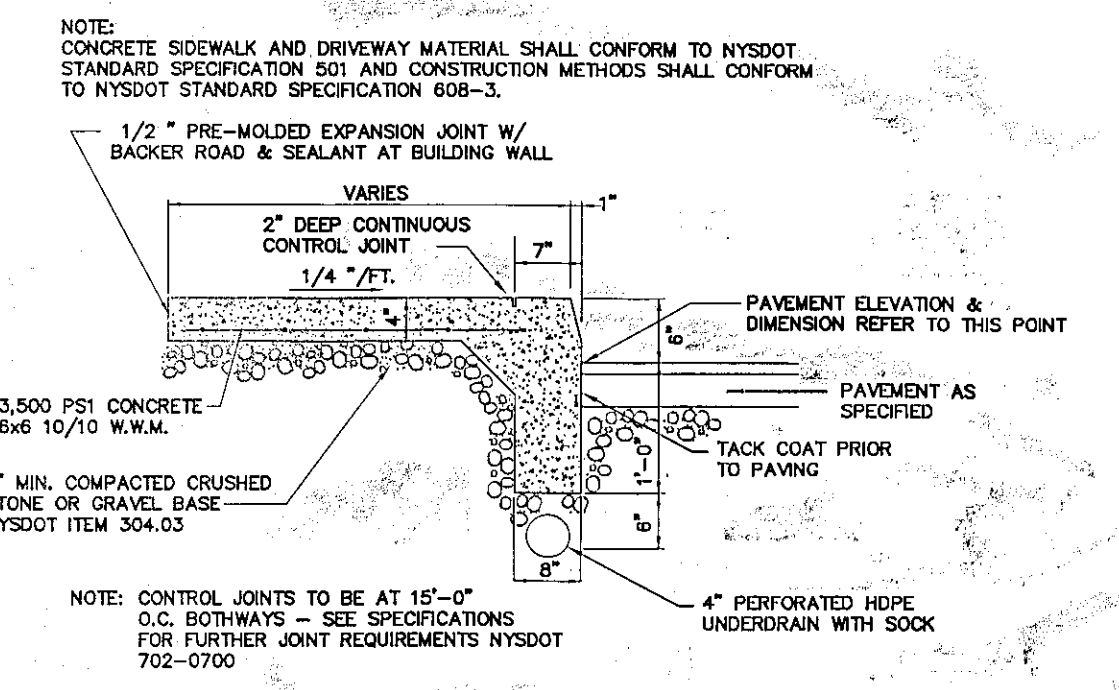


Town of Bethlehem Planning Board
By direction of the Chairman
these plans are hereby Approved.
See first sheet for date & signature.

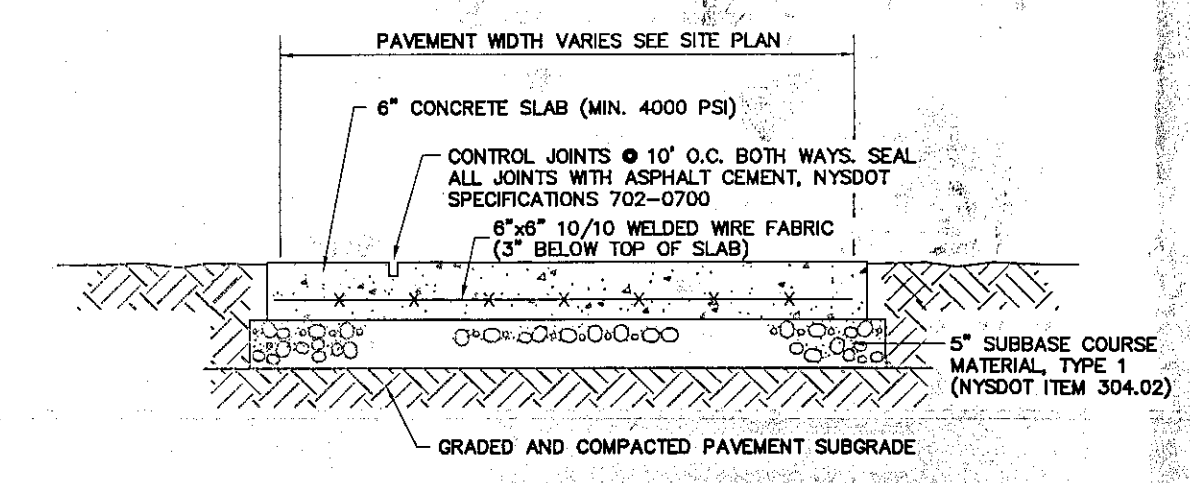
PLANNING BOARD APPROVAL



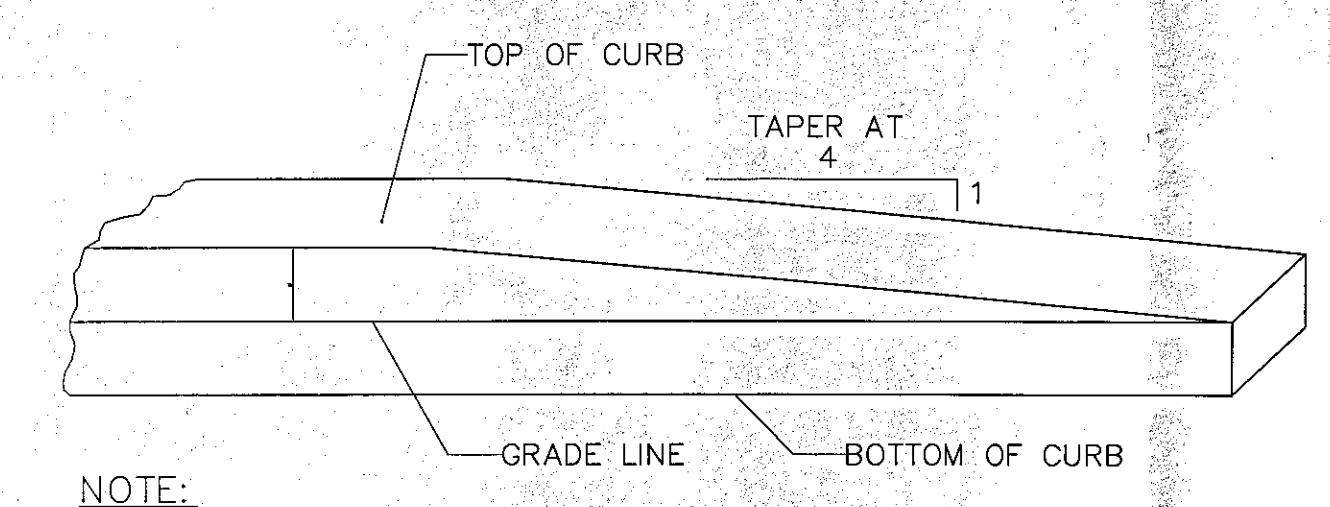
TYPICAL PRECAST CATCH BASIN



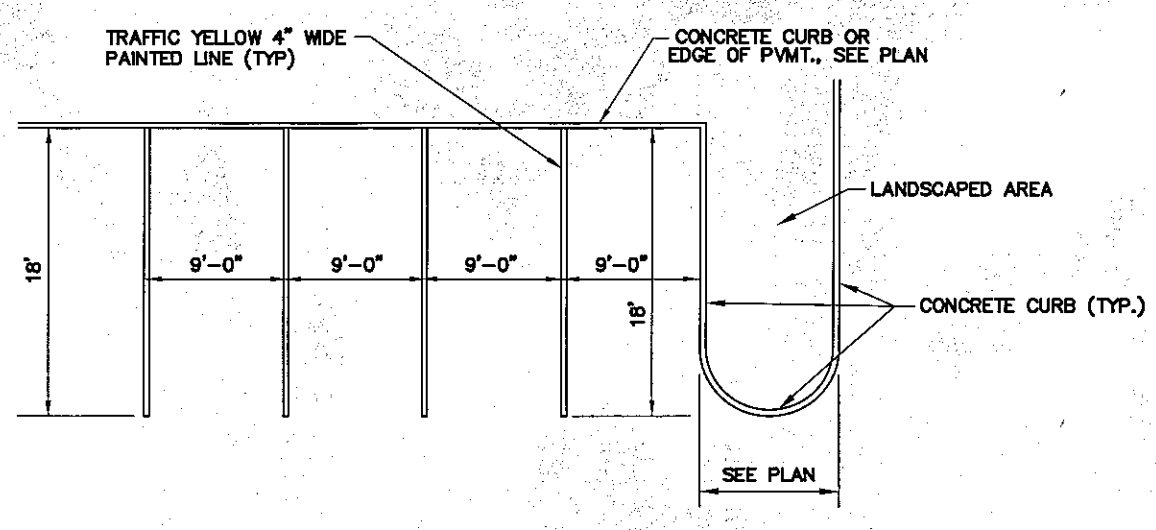
INTEGRAL CURB/SIDEWALK DETAIL



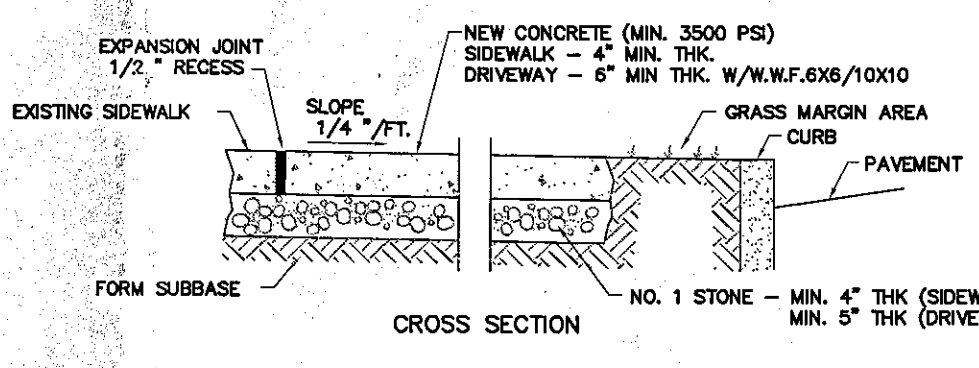
EXTERIOR CONCRETE SLAB-ON-GRADE SECTION



CURB TERMINAL DETAIL



90° PARKING STALL LAYOUT



CONCRETE SIDEWALK

FILENAME: N:\1700C-05-Benderosa\Drawings\Plotting\Attentive-B\CD04-1-AI-B.dwg [C4.1] PLOT DATE: July 19, 2013 - 2:27pm