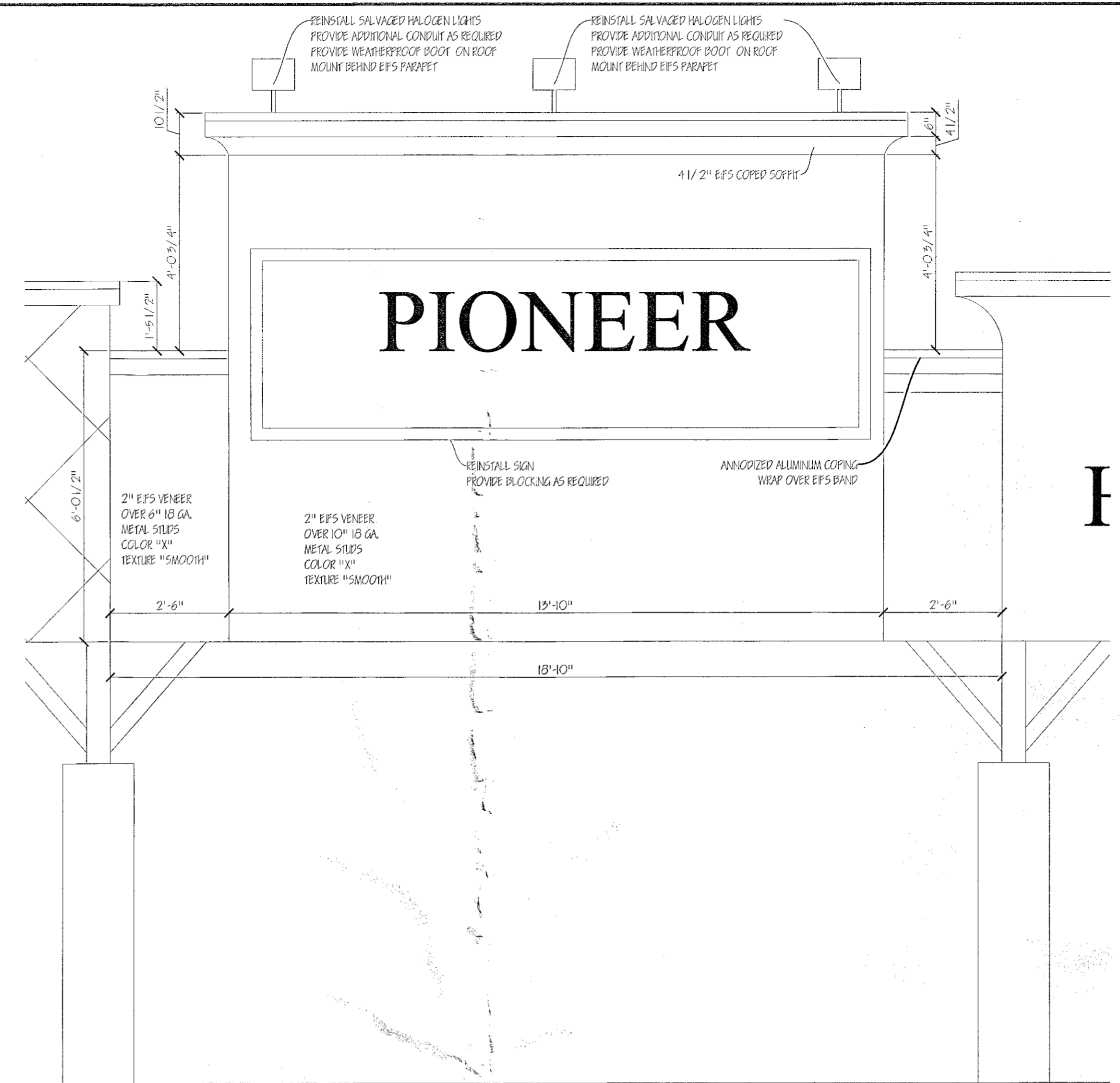
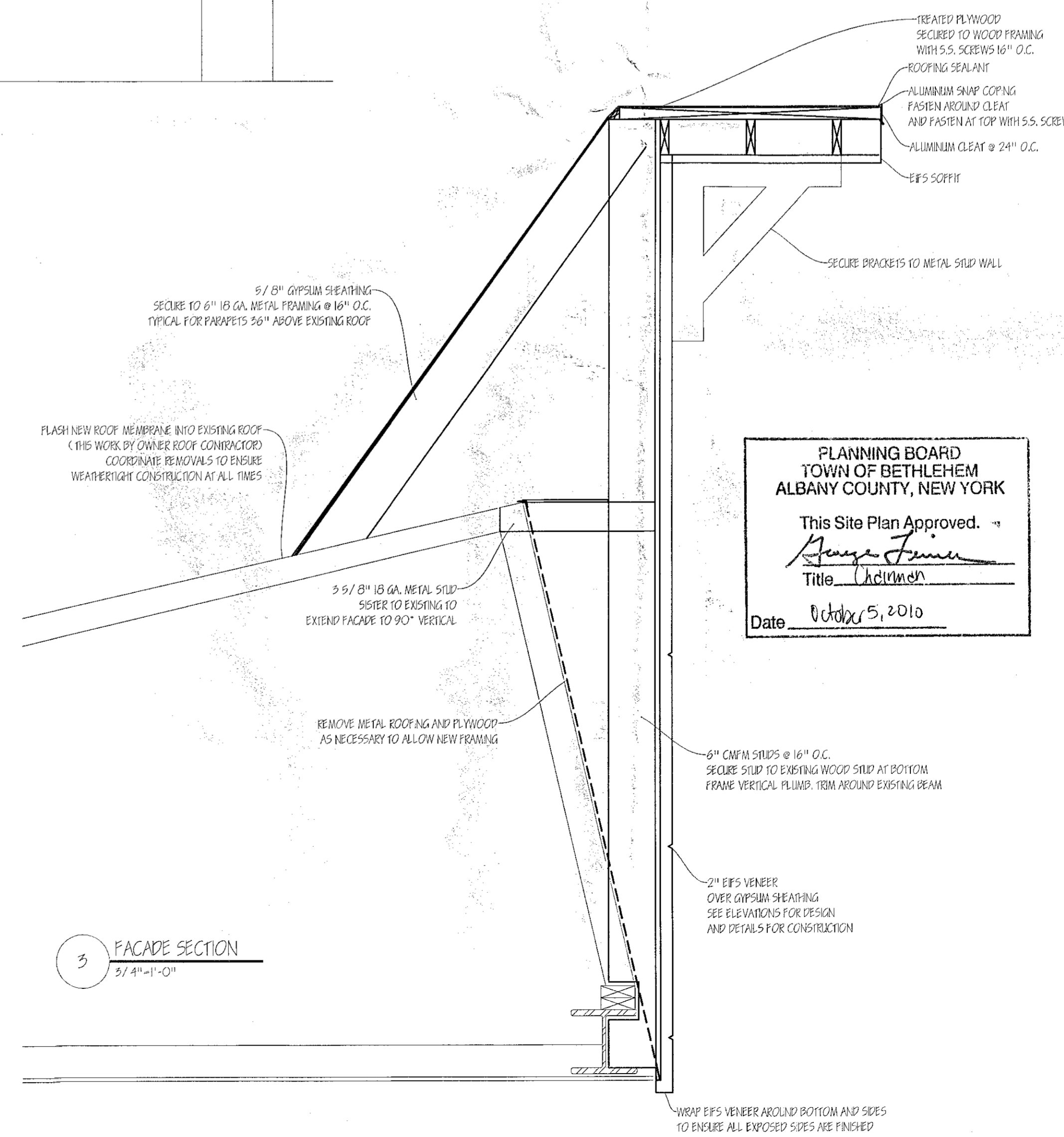


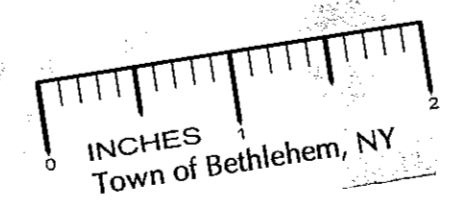
1 FACADE ELEVATION
 1/2" = 1'-0"



2 FACADE ELEVATION
 1/2" = 1'-0"

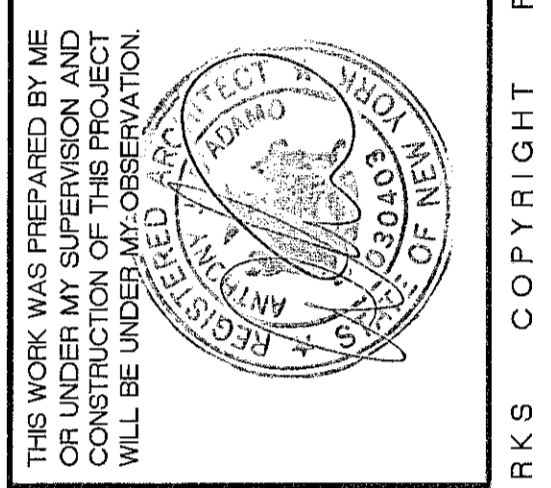


3 FACADE SECTION
 3/4" = 1'-0"



PLANNING BOARD
 TOWN OF BETHLEHEM
 ALBANY COUNTY, NEW YORK
 This Site Plan Approved. →
George Finer
 Title: *Chairman*
 Date: *October 5, 2010*

CAPITAL ARCHITECTURE
 2380 WESTERN AVENUE
 GUILDERLAND, NEW YORK 12084
 867-4247 OFFICE, 861 7040 FAX, 253 1442 CELL
 capitalarchitecture@yahoo.com



GLENMONT FACADE
 329 GLENMONT ROAD
 GLENMONT, NY
 ENLARGED ELEVATIONS AND DETAILS

SCALE:	AS NOTED	REVISIONS:	SHEET #
DATE:	1 JUNE 10	△	A5
DRAWN:	AJD	△	
		△	
		△	