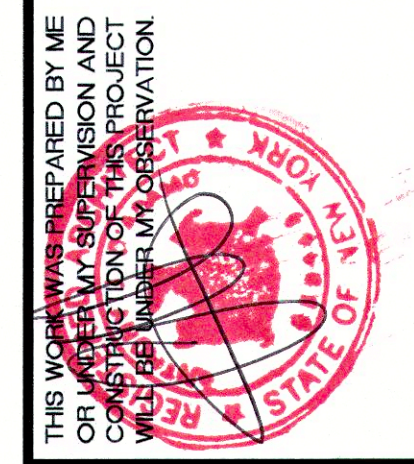


FILE  
RECEIVED  
NOV 9 2012  
Town of Bethlehem  
Planning Board

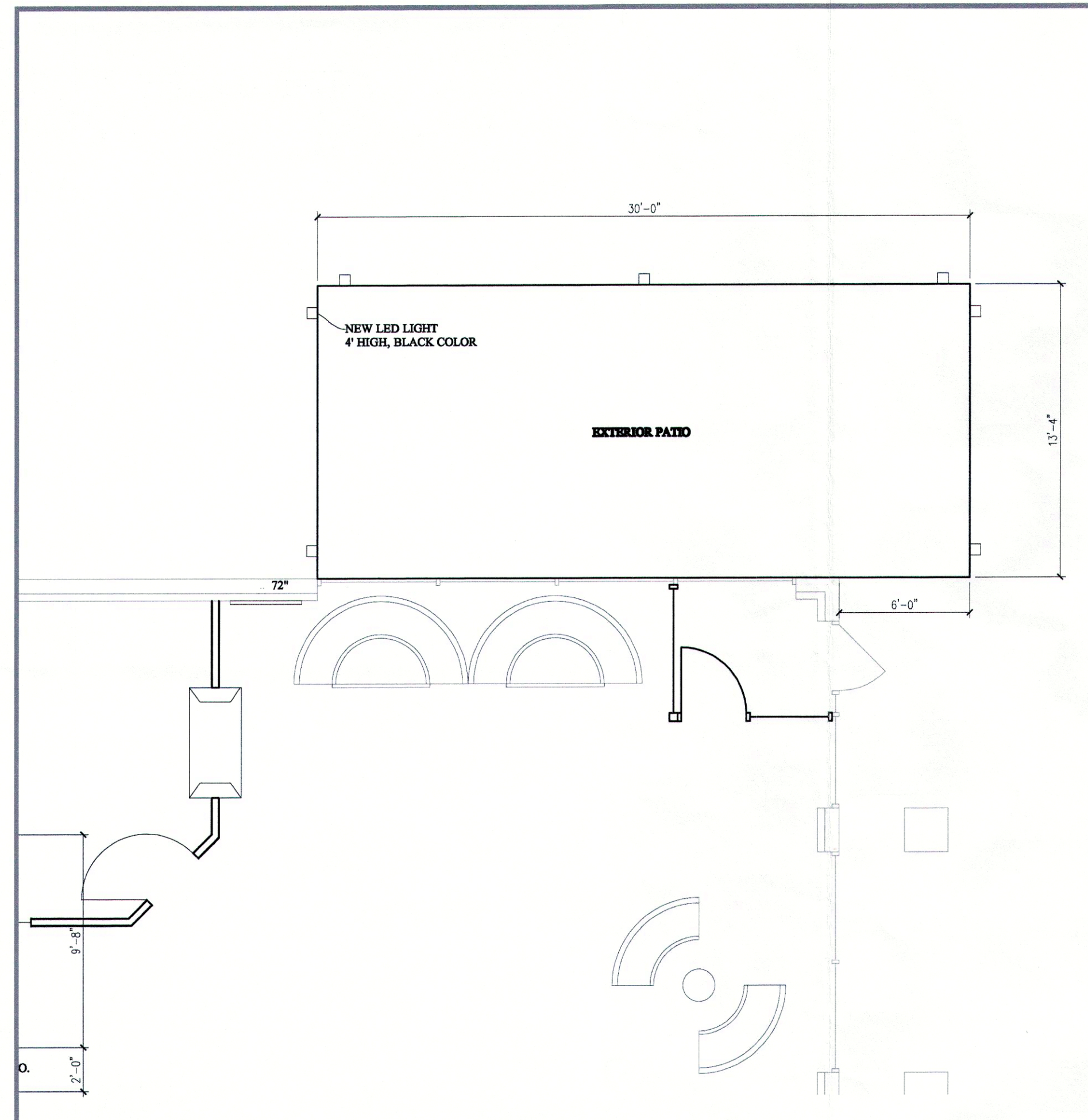
CAPITAL ARCHITECTURE  
86 REMSEN STREET  
COHOES, NEW YORK 12047  
867-4247 OFFICE, 861 7040 FAX, 253 1442 CELL  
capitalarchitecture@yahoo.com



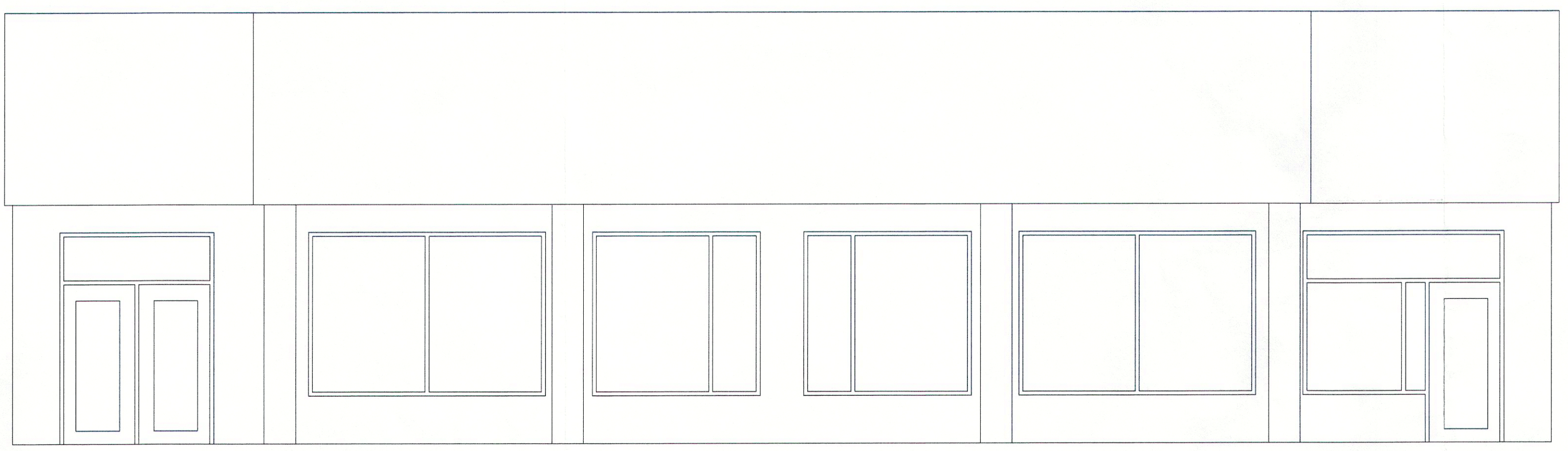
THIS WORK WAS PREPARED BY ME  
OR UNDER MY SUPERVISION AND  
CONSTRUCTION OF THIS PROJECT  
REQUIRES MY REGISTRATION  
AS AN ARCHITECT IN THE STATE OF  
NEW YORK

SCALE:	AS NOTED	REVISIONS:
DATE:	18 SEPTEMBER 12	△
DRAWN:	AJD	△
SHEET#:	L1	△

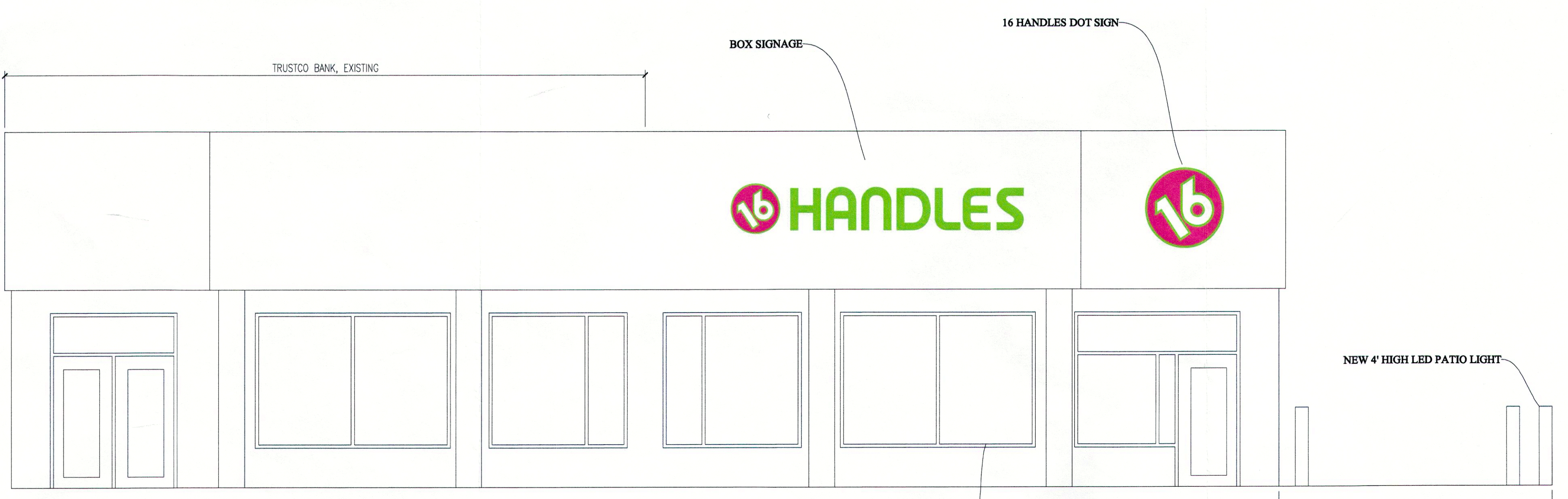
COPYRIGHT PROTECTED: THIS WORK IS PROTECTED UNDER THE 1990 ARCHITECTURAL WORKS COPYRIGHT PROTECTION ACT AND ANY REVISIONS THEREOF



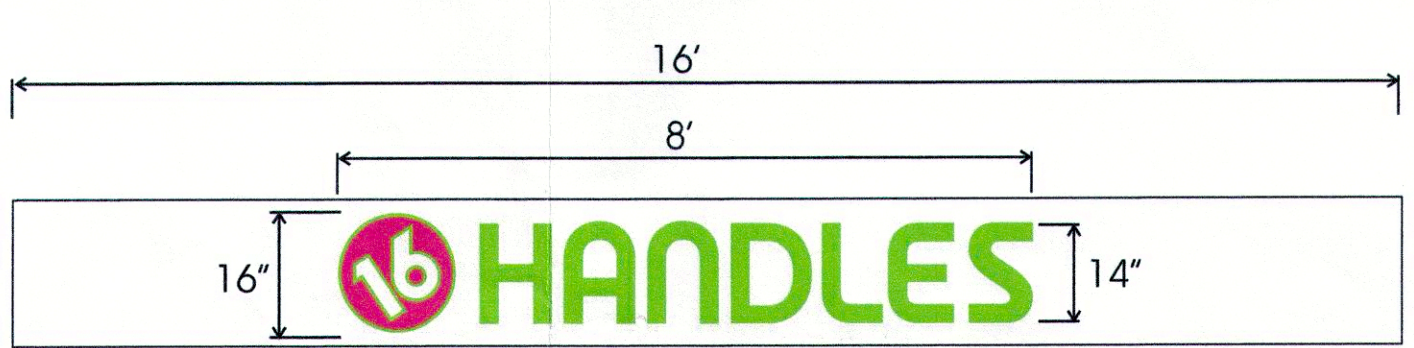
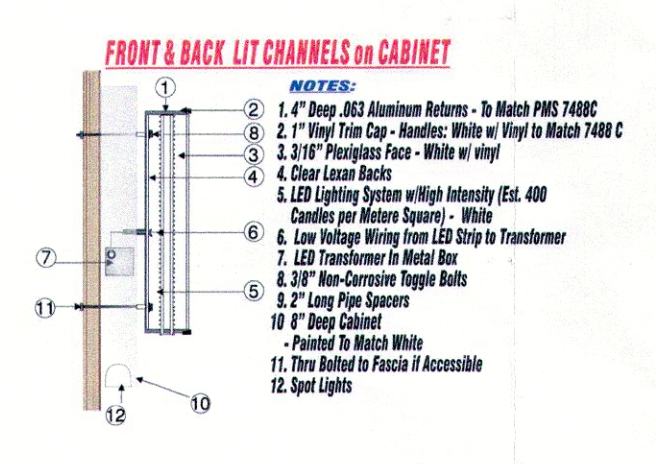
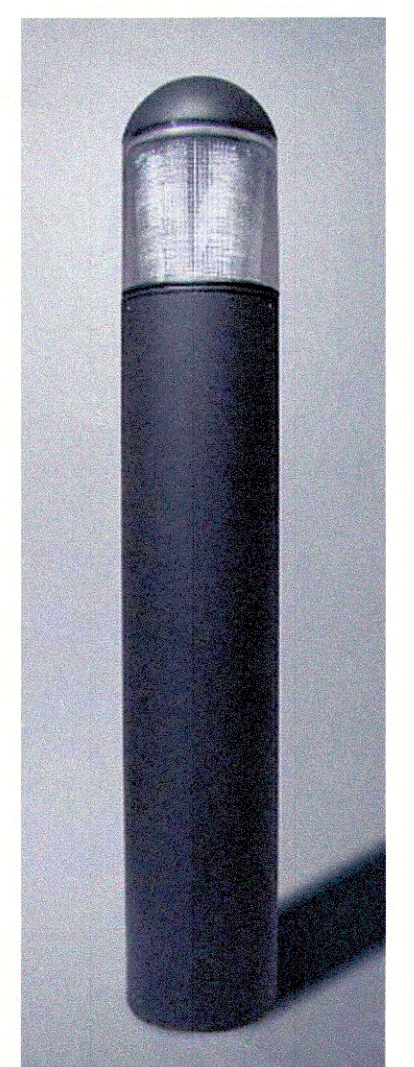
3 PATIO AND LIGHTING PLAN  
1/4"=1'-0"



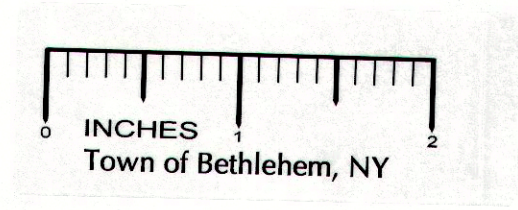
1 EXISTING ELEVATION  
1/4"=1'-0"



2 PROPOSED ELEVATION  
1/4"=1'-0"



4 LIGHTING DETAIL  
1/4"=1'-0"



Planning Board Endorsement:  
Approved: \_\_\_\_\_  
Not  
Approved: \_\_\_\_\_  
Signature: \_\_\_\_\_