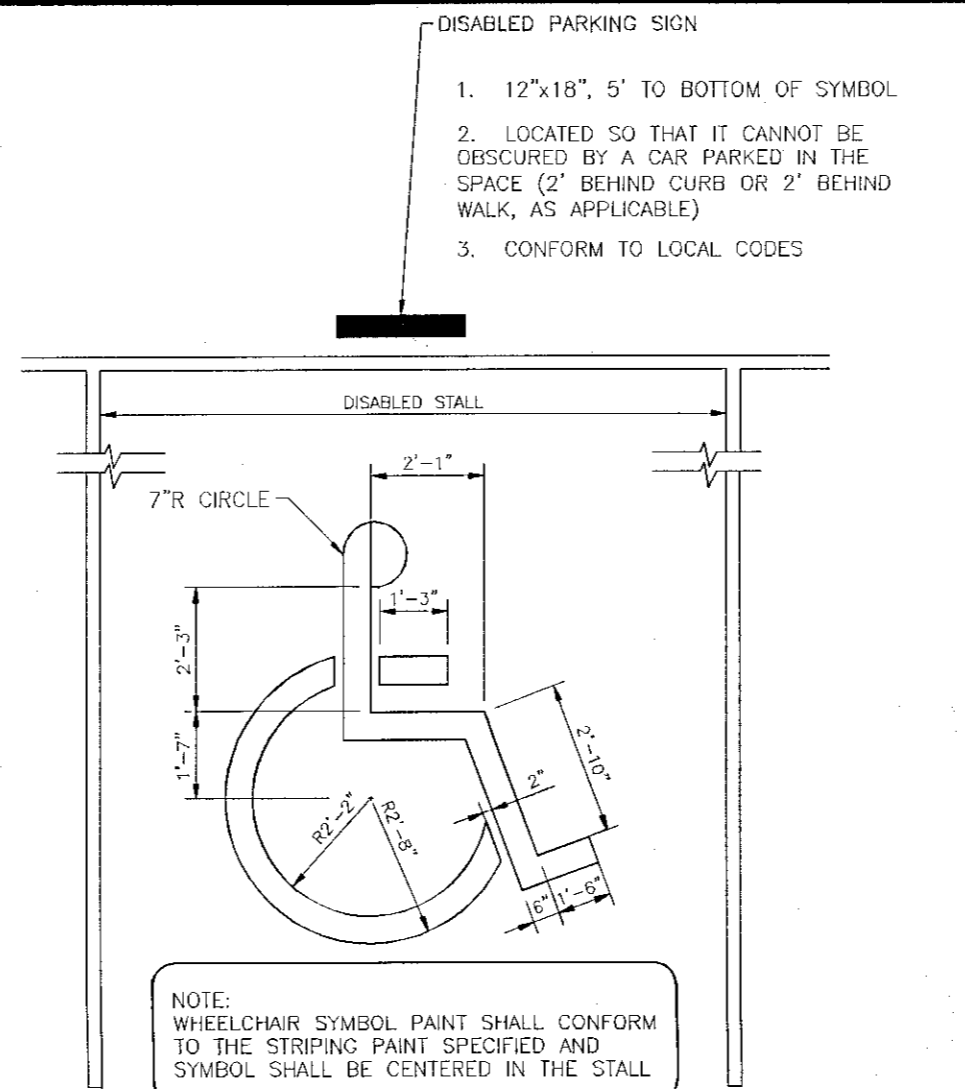


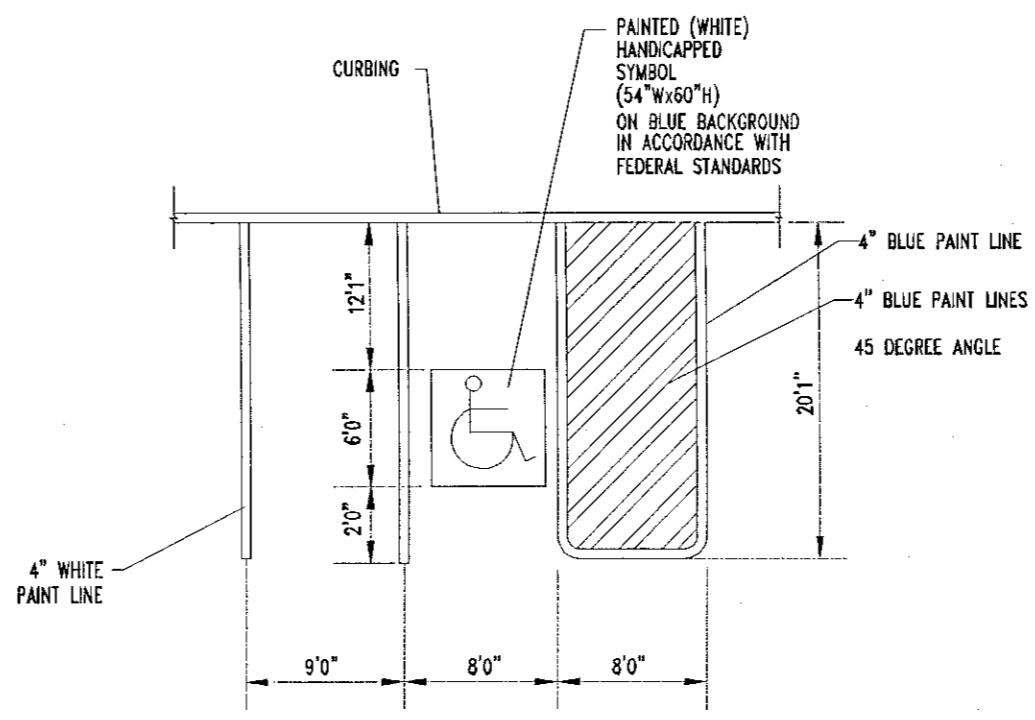
PROPOSED SIGNAGE TABLE				
SIGN SCHEDULE				
SYM	DESCRIPTION	SIGN AREA	QUAN.	TOTAL AREA
(A)	PROPOSED WALL SIGN	16.70 S.F.	1	16.70 S.F.
(B)	DUNKIN DONUTS DIRECTIONAL SIGNS	2.98 S.F.	2	5.96 S.F.
(C)	APPROVED/EXISTING MONUMENT	32.0 S.F.	1	32.0 S.F.
(D)	EXISTING WALL SIGN	12.57 S.F.	1	12.57 S.F.
(E)	"OPEN/FULL" SIGN TO BE MOUNTED UNDER "DRIVE-THRU" DIRECTIONAL SIGN	N/A	N/A	N/A
		PROPOSED TOTAL AREA: 67.23 S.F.		



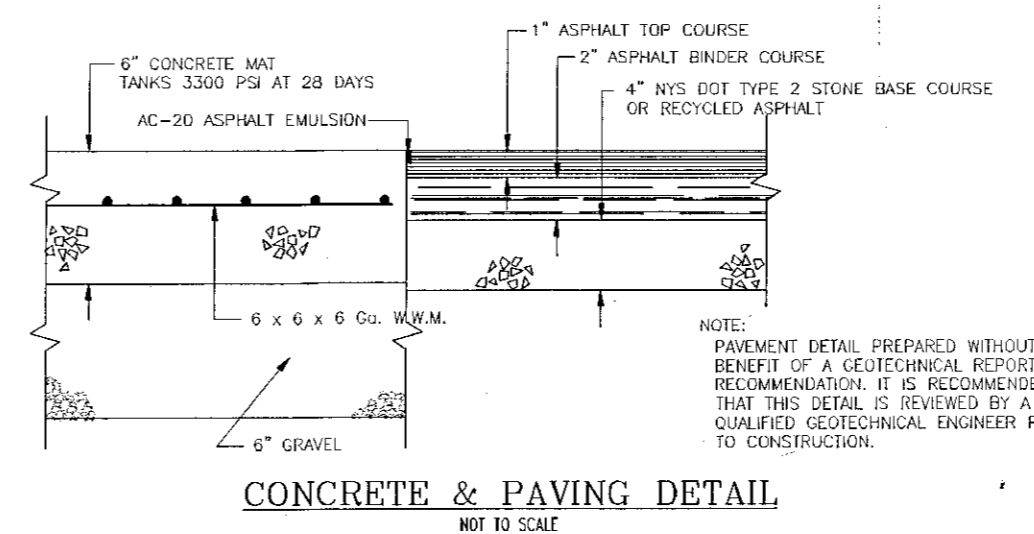
DISABLED PARKING SPACE
PAINTING DETAIL
NOT TO SCALE



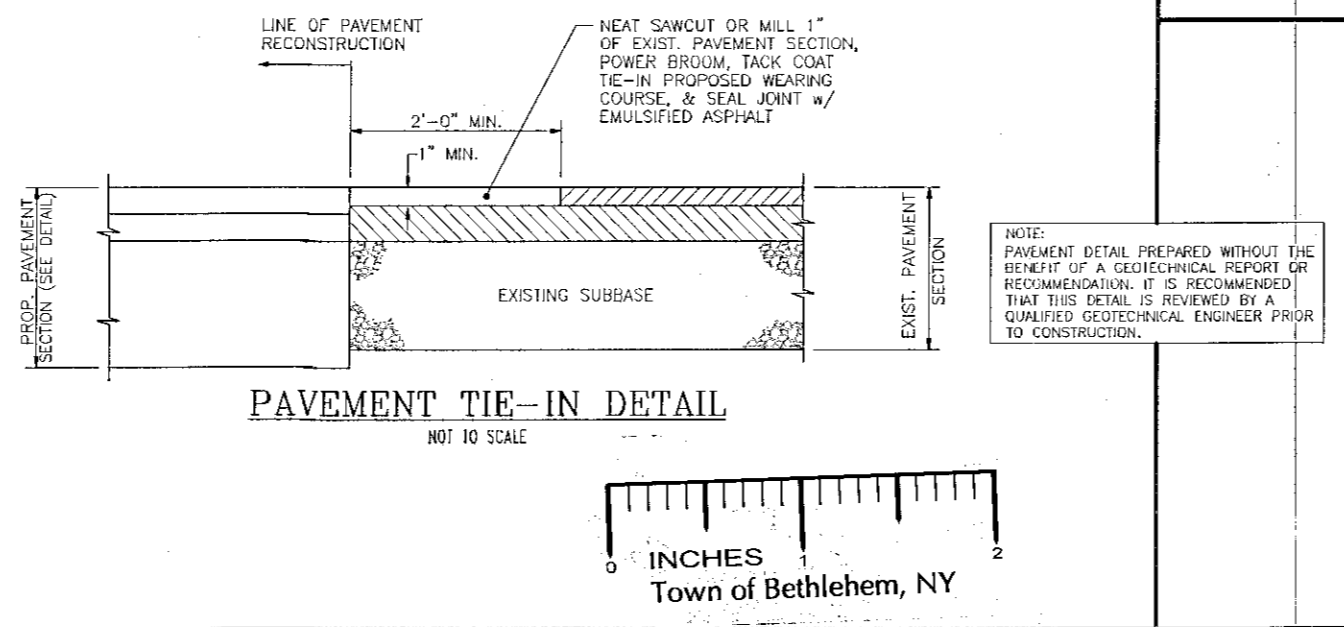
12" X 18"
NO PARKING SIGN (P1-1C)
NOT TO SCALE



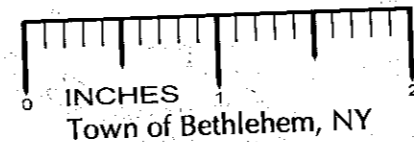
HANDICAPPED STALL MARKING
NOT TO SCALE



CONCRETE & PAVING DETAIL
NOT TO SCALE

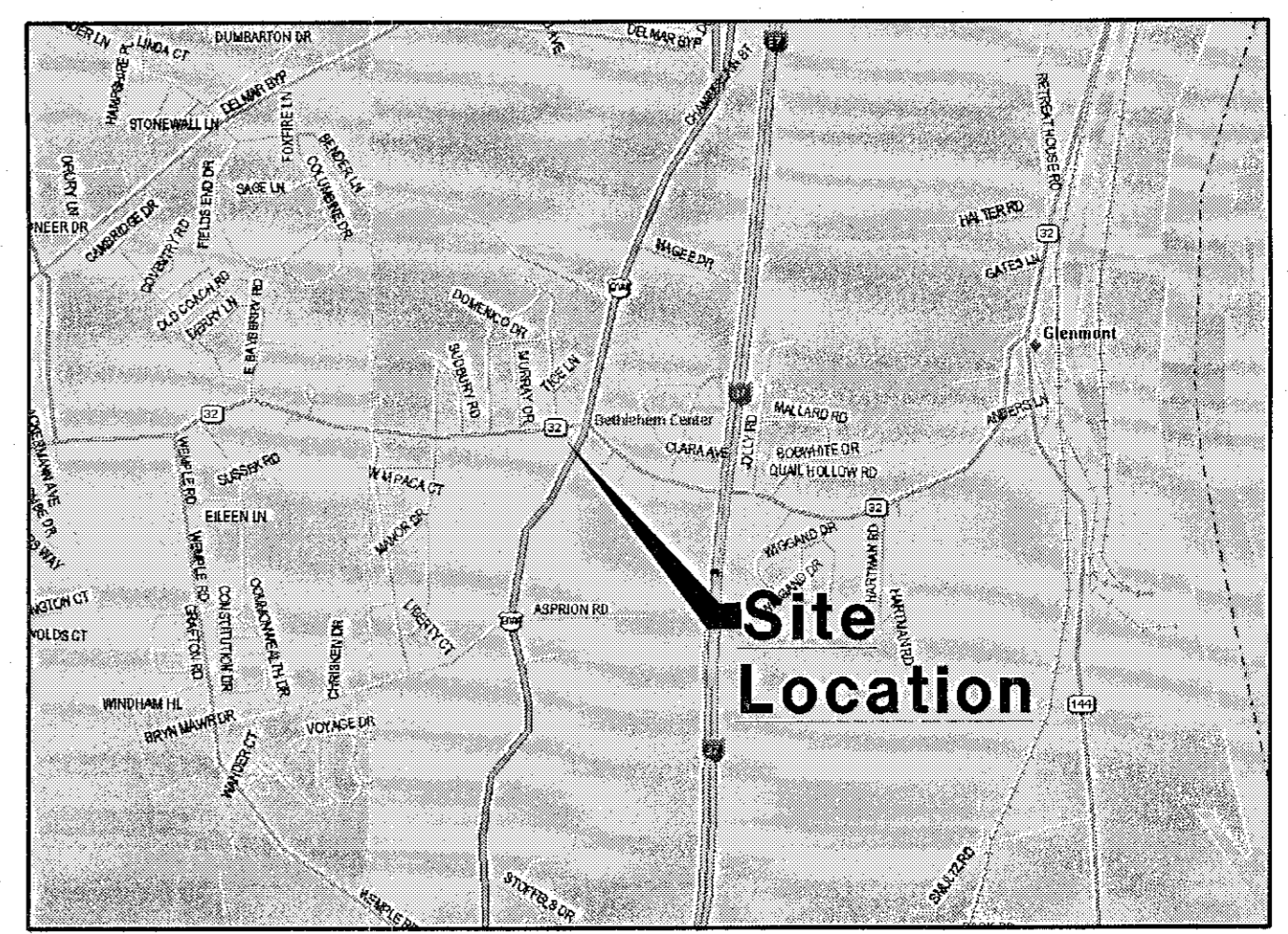


PAVEMENT TIE-IN DETAIL
NOT TO SCALE



GENERAL NOTES

- THIS PLAN REFERENCES DRAWINGS BY: CAPITAL ARCHITECTURE
37 DAVIS AVENUE
ALBANY, NY 12203
- THIS CONCEPT WAS PREPARED STRICTLY BASED UPON INFORMATION IDENTIFIED ABOVE.
- THE CONCEPT REPRESENTED HEREIN IDENTIFIES A DESIGN CONCEPT RESULTING FROM LAYOUT PREFERENCES IDENTIFIED BY OWNER COUPLED WITH A PRELIMINARY REVIEW OF ZONING AND LAND DEVELOPMENT REQUIREMENTS AND ISSUES. THE FEASIBILITY WITH RESPECT TO OBTAINING LOCAL, COUNTY, STATE, AND OTHER APPLICABLE APPROVALS IS NOT WARRANTED AND CAN ONLY BE ASSESSED AFTER FURTHER EXAMINATION AND VERIFICATION OF SAME REQUIREMENTS AND PROCUREMENT OF JURISDICTIONAL APPROVALS.
- THE CONCEPTUAL PLAN IS PREPARED FOR CONCEPTUAL PRESENTATION PURPOSES ONLY AND IS NOT INTENDED FOR UTILIZATION AS A ZONING AND/OR CONSTRUCTION DOCUMENT. THE EXISTING CONDITIONS SHOWN HEREON ARE BASED UPON INFORMATION THAT WAS SUPPLIED TO OUR OFFICE AT THE TIME OF PLAN PREPARATION AND MAY BE SUBJECT TO CHANGE UPON PERFORMANCE OF ADDITIONAL DUE DILIGENCE.



BOHLER ENGINEERING

CORPORATE OFFICE:
WARREN, NJ

OFFICES:
• SOUTH BRIDGE, MA
• BOSTON, MA
• PITTSBURGH, PA
• PITTSBURGH, PA
• PITTSBURGH, PA
• PITTSBURGH, PA
• PITTSBURGH, PA
• PITTSBURGH, PA

SUBOFFICES:
• WESTPORT, MA
• WESTPORT, MA
• WESTPORT, MA
• WESTPORT, MA
• WESTPORT, MA
• WESTPORT, MA
• WESTPORT, MA

PROJECT MANAGERS
ENVIRONMENTAL CONSULTANTS
LANDSCAPE ARCHITECTS

REVISIONS:			
REV.	DATE	COMMENT	BY
4	9/23/08	"OPEN/FULL" SIGN ADDED	AML
3	8/25/08	REVISED PER TOWN PLANNING COMMENTS	AML
2	8/13/08	SIGN TABLE ADDED	BHR
1	6/17/08	REVISED PER TOWN PLANNING COMMENTS	ECR

NOT APPROVED FOR CONSTRUCTION

PROJECT No:	8080133
DRAWN BY:	ECR
CHECKED BY:	CEB
DATE:	4/16/08
SCALE:	AS NOTED
CAD I.D.:	SITE-REV.4
	SUBMITTAL

PROJECT:

PROPOSED DRIVE-THRU

FOR

Frank Hessari (Prestige Petroleum)

N.Y.S. ROUTE 9W
TOWN OF GLENMONT
ALBANY COUNTY
NEW YORK STATE

BOHLER ENGINEERING

5 COMPUTER DRIVE WEST
ALBANY, NY 12205
PH: (518) 438-9900
FX: (518) 438-9900
www.BohlerEngineering.com

W.D. GOEBEL

PROFESSIONAL ENGINEER
NEW YORK LICENSE NO. 07384
MASSACHUSETTS LICENSE NO. 2644
CONNECTICUT LICENSE NO. 2184
NEW HAMPSHIRE LICENSE NO. 10280
MINE LICENSE NO. 9490

PLANNING BOARD
TOWN OF BETHLEHEM
ALBANY COUNTY, NEW YORK

Parker D. Matthews

Title: Chairman
SOA-136-A-1

Date: 9-20-08

RECEIVED
OCT 15 2008
PLANNING BOARD
TOWN OF BETHLEHEM

TOWN OF BETHLEHEM APPROVAL AREA

SHEET TITLE:
DRIVE-THRU IMPROVEMENT PLAN / DETAILS

SHEET NUMBER:
1
OF 1

REVISION 4

NOTE: THIS PLAN IS BASED ON PRELIMINARY BACKGROUND DATA (BY OTHERS) AND LIMITED DUE DILIGENCE.

ANY PERSON IS PROHIBITED FROM ALTERING ANYTHING ON THESE DRAWINGS AND/OR THE ACCOMPANYING SPECIFICATIONS, UNLESS IT IS UNDER THE WRITTEN DIRECTION OF A LICENSED PROFESSIONAL ENGINEER OF THE FIRM. IN THE EVENT SUCH ALTERATIONS ARE MADE, THE PROFESSIONAL ENGINEER OF THE FIRM MUST SIGN, SEAL, DATE, AND DESCRIBE THE FULL EXTENT OF THE ALTERATION ON THE DRAWINGS AND/OR IN THE SPECIFICATIONS. (NYS EDUCATION LAW SECTION 2209-2)



THE SEAL OF NEW YORK REQUIRES NOTIFICATION BY SEPARATORS DESIGNERS, OR ANY PERSON PREPARING TO INSTITUTE THE EARTH'S SURFACE ANYWHERE IN THE STATE.