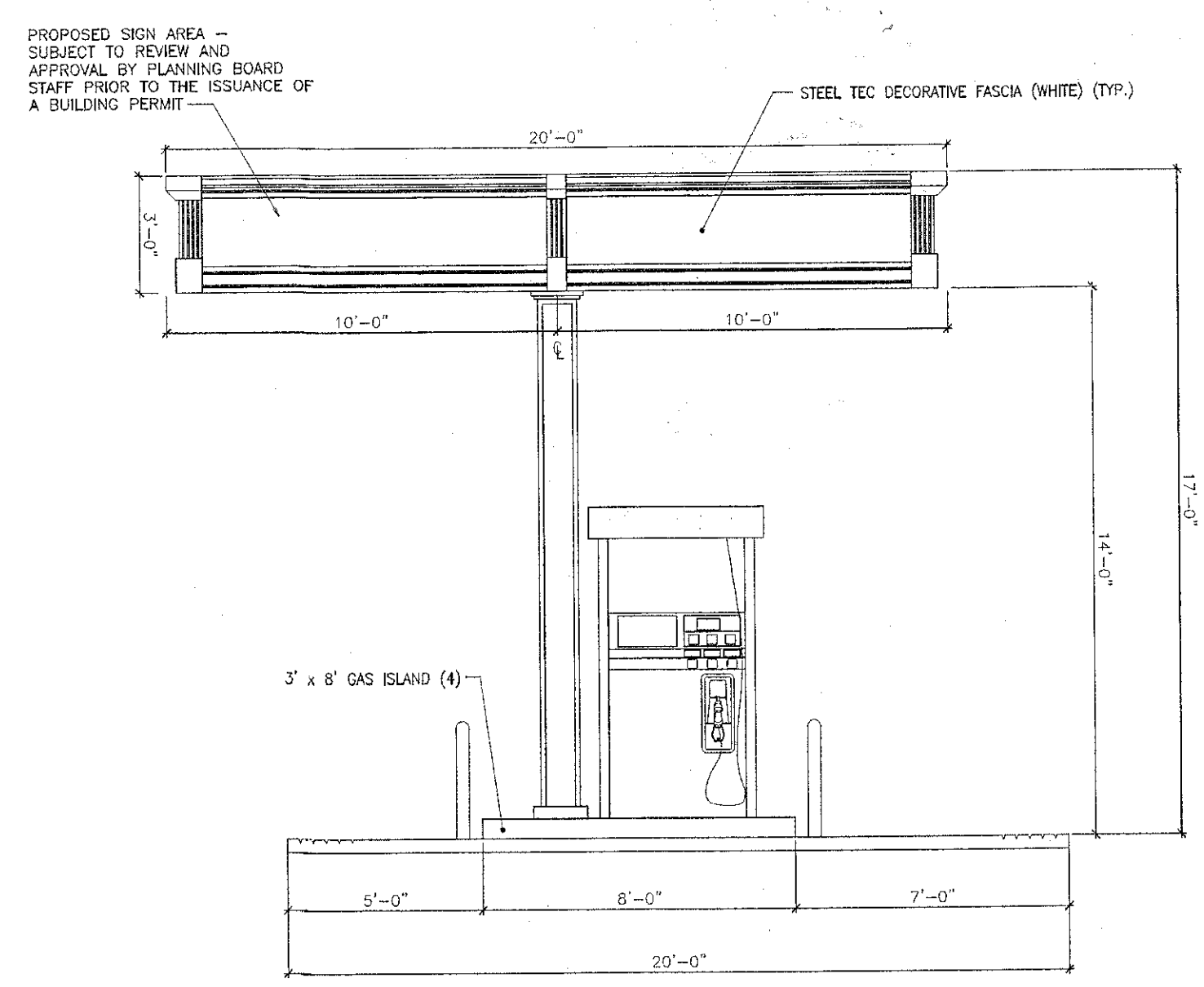
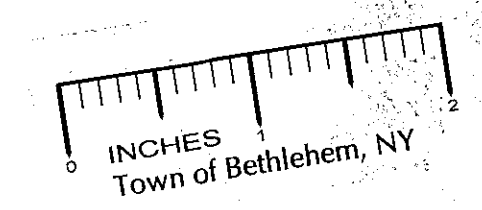


FRONT ELEVATION
 SCALE: 1/4"=1'-0"



SIDE ELEVATION
 SCALE: 1/4"=1'-0"



PROPOSED SIGN AREA -
 SUBJECT TO REVIEW AND
 APPROVAL BY PLANNING BOARD
 STAFF PRIOR TO THE ISSUANCE OF
 A BUILDING PERMIT

PROPOSED SIGN AREA -
 SUBJECT TO REVIEW AND
 APPROVAL BY PLANNING BOARD
 STAFF PRIOR TO THE ISSUANCE OF
 A BUILDING PERMIT

PLANNING BOARD
 TOWN OF BETHLEHEM
 ALBANY COUNTY, NEW YORK

This Site Plan Approved.

David Goebel
 Title: *Chairman*
 Date: *March 2, 2011*

TOWN OF BETHLEHEM APPROVAL AREA

THIS PLAN IS NOT INTENDED FOR
 CONSTRUCTION PURPOSES

BOHLER ENGINEERING

CORPORATE OFFICE:
 • WARREN, NJ

OTHER OFFICES:
 • SOUTH SCOTLAND, VA
 • CHARLOTTE, NC
 • PHILADELPHIA, PA
 • BETHLEHEM, PA
 • BOSTON, MA
 • FORT LAUDERDALE, FL
 • JACKSONVILLE, FL
 • TAMPA, FL

CIVIL & CONSULTING ENGINEERS
 SURVEYORS
 PROJECT MANAGERS
 ENVIRONMENTAL CONSULTANTS
 LANDSCAPE ARCHITECTS

REVISIONS

REV	DATE	COMMENT	BY
1	02/13/12	FOR TOWN APPROVAL	SH
2			
3			
4			
5			
6			
7			
8			
9			

THE FOLLOWING STATES REQUIRE NOTIFICATION BY EXCAVATORS, DESIGNERS OR ANY PERSON PREPARING TO DISTURB THE EARTH'S SURFACE ANYWHERE IN THE STATE:
 (MA, ME, NH, RI, VT 1-800-344-7229)
 (CT 1-800-922-4655)
 (NY 1-800-485-7262)

PERMIT SET

PROJECT No.: B100149
 DRAWN BY: SG
 CHECKED BY: CER
 DATE: 12/16/11
 SCALE: AS SHOWN
 CAD ID: B100195S10

PROJECT:
PROPOSED CONVENIENCE STORE MODIFICATIONS
 FOR
DELMAR HOLDINGS

594 DELAWARE AVENUE
 TOWN OF BETHLEHEM
 ALBANY COUNTY, NY

BOHLER ENGINEERING

5 COMPUTER DRIVE WEST SUITE 203
 ALBANY NY, 12205
 Phone: (518) 438-9900
 Fax: (518) 438-0900
www.BohlerEngineering.com

W.D. GOEBEL
David Goebel
 PROFESSIONAL ENGINEER
 No. 12000
 State of New York

SHEET TITLE:
CANOPY ELEVATIONS

SHEET NUMBER:
1
 OF 1

REV. 1

ANY PERSON IS PROHIBITED FROM ALTERING ANYTHING ON THESE DRAWINGS AND/OR THE ACCOMPANYING SPECIFICATIONS, UNLESS IT IS UNDER THE WRITTEN DIRECTION OF A LICENSED PROFESSIONAL ENGINEER OF THE FIRM. IN THE EVENT SUCH ALTERATIONS ARE MADE, THE PROFESSIONAL ENGINEER OF THE FIRM MUST SIGN, SEAL, DATE, AND DESCRIBE THE FULL EXTENT OF THE ALTERATION ON THE DRAWINGS AND/OR IN THE SPECIFICATIONS. (NYS EDUCATION LAW SECTION 2209-2)