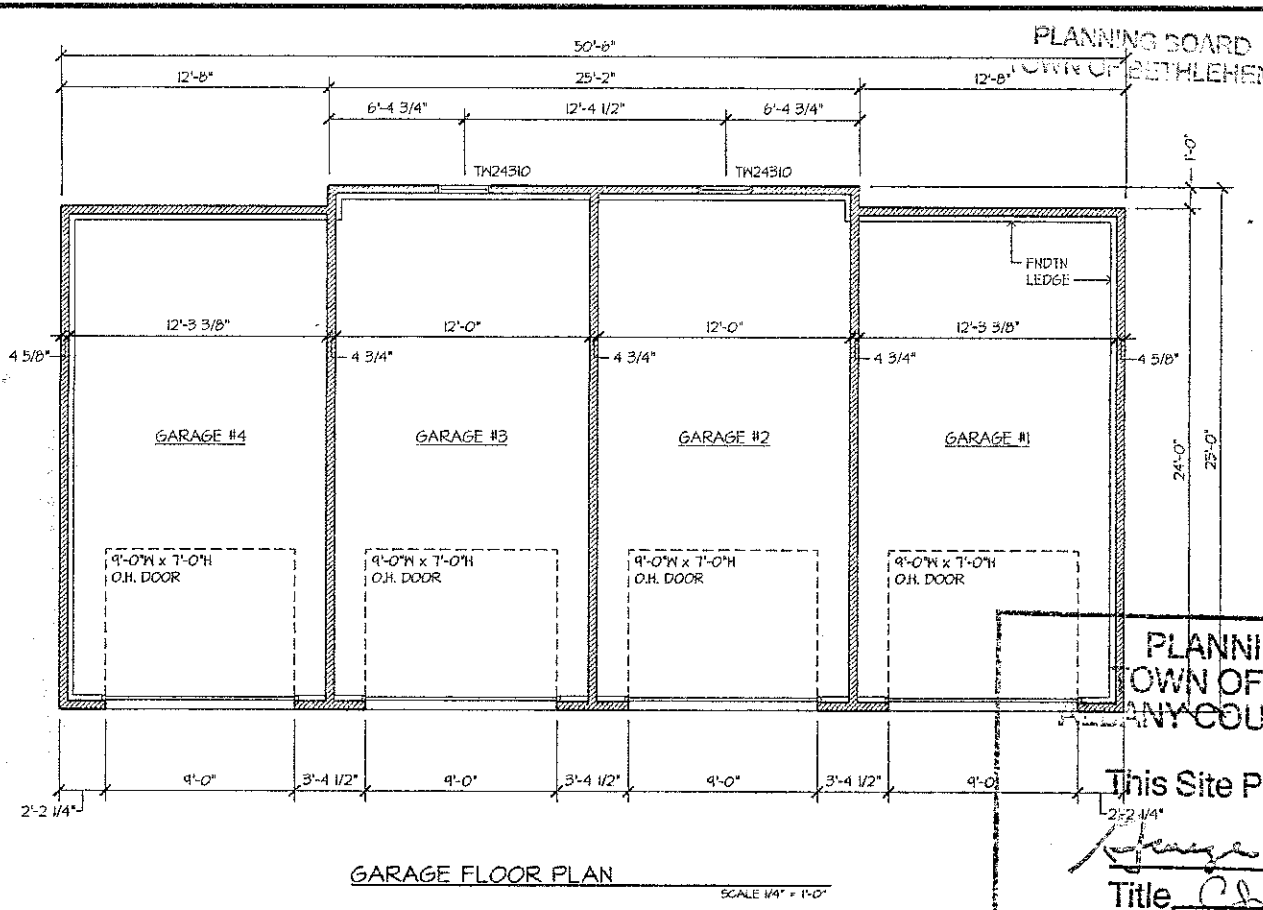
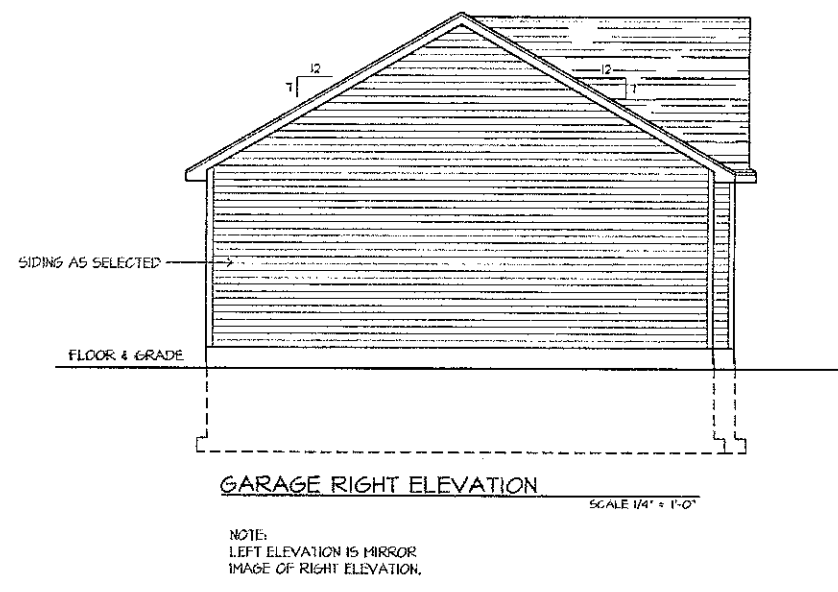
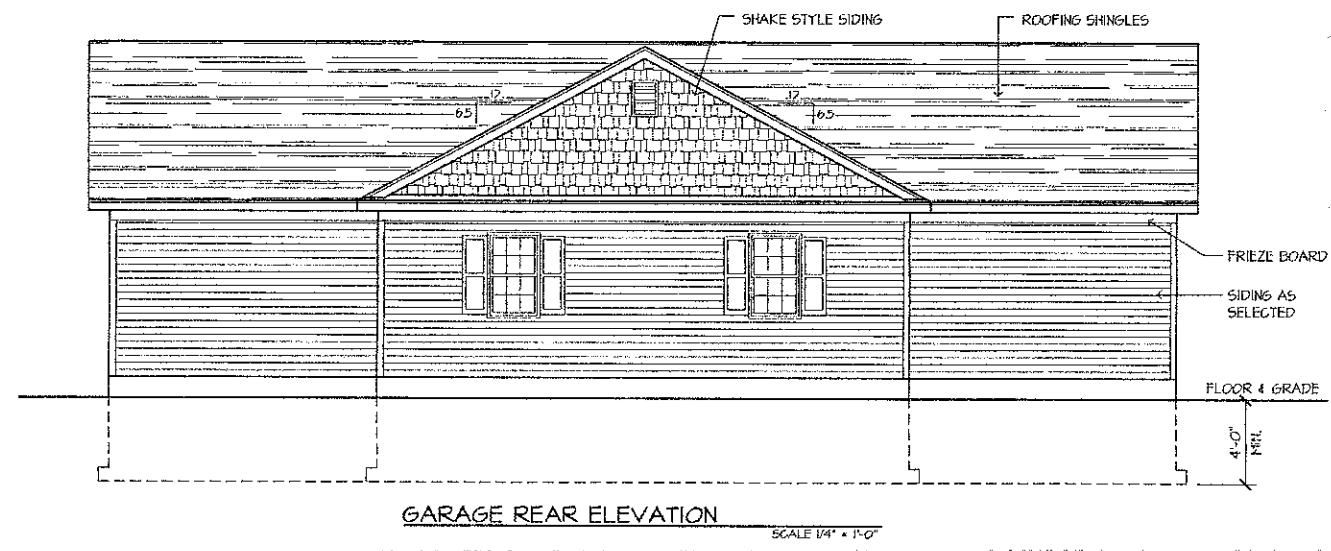
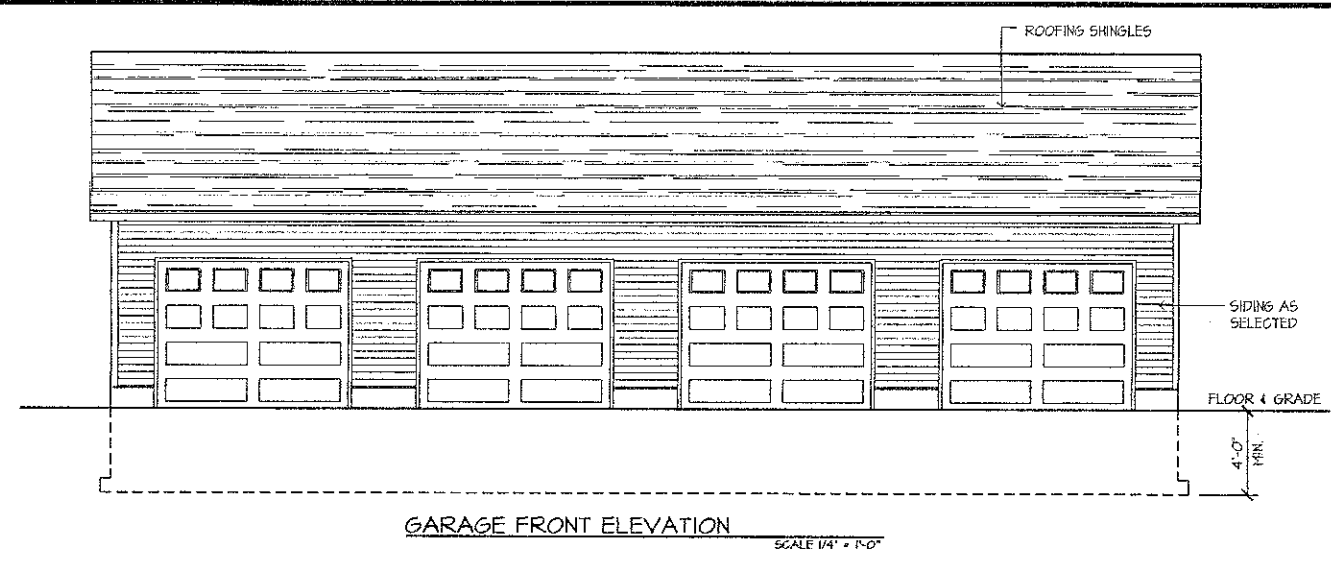


RECEIVED  
AUG 30 2010

Planning Approval  
09-00100002\_SPA162



PLANNING BOARD  
TOWN OF BETHLEHEM  
ALBANY COUNTY, NEW YORK

This Site Plan Approved.

*George J. ...*  
Title Chairman

Date 8/1/2010

REVISION	DATE	BY	DATE	SCALE	DATE

OWNER:  
ROSEN DEVELOPMENT  
COMPANY, INC.  
20 CORPORATE WOODS BLVD.  
ALBANY, NY 12211  
(518) 465-4500

KENDELL SQUARE APARTMENTS  
GARAGE G2 (16 KENDELL DR.)  
FEURA BUSH RD. & ELSMERE AVE.  
BETHLEHEM, NY

GARAGE FLOOR PLAN & ELEVATIONS

