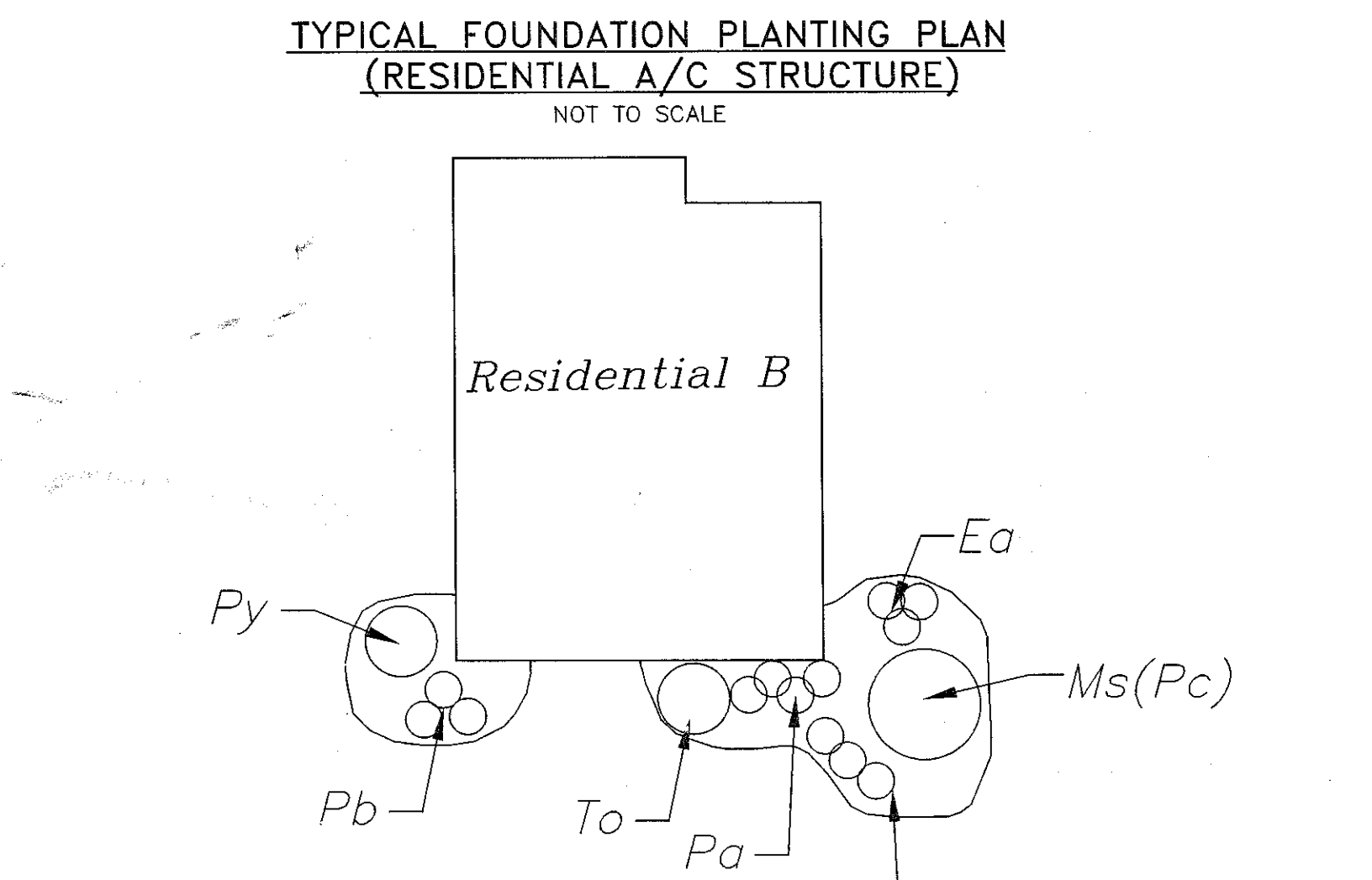
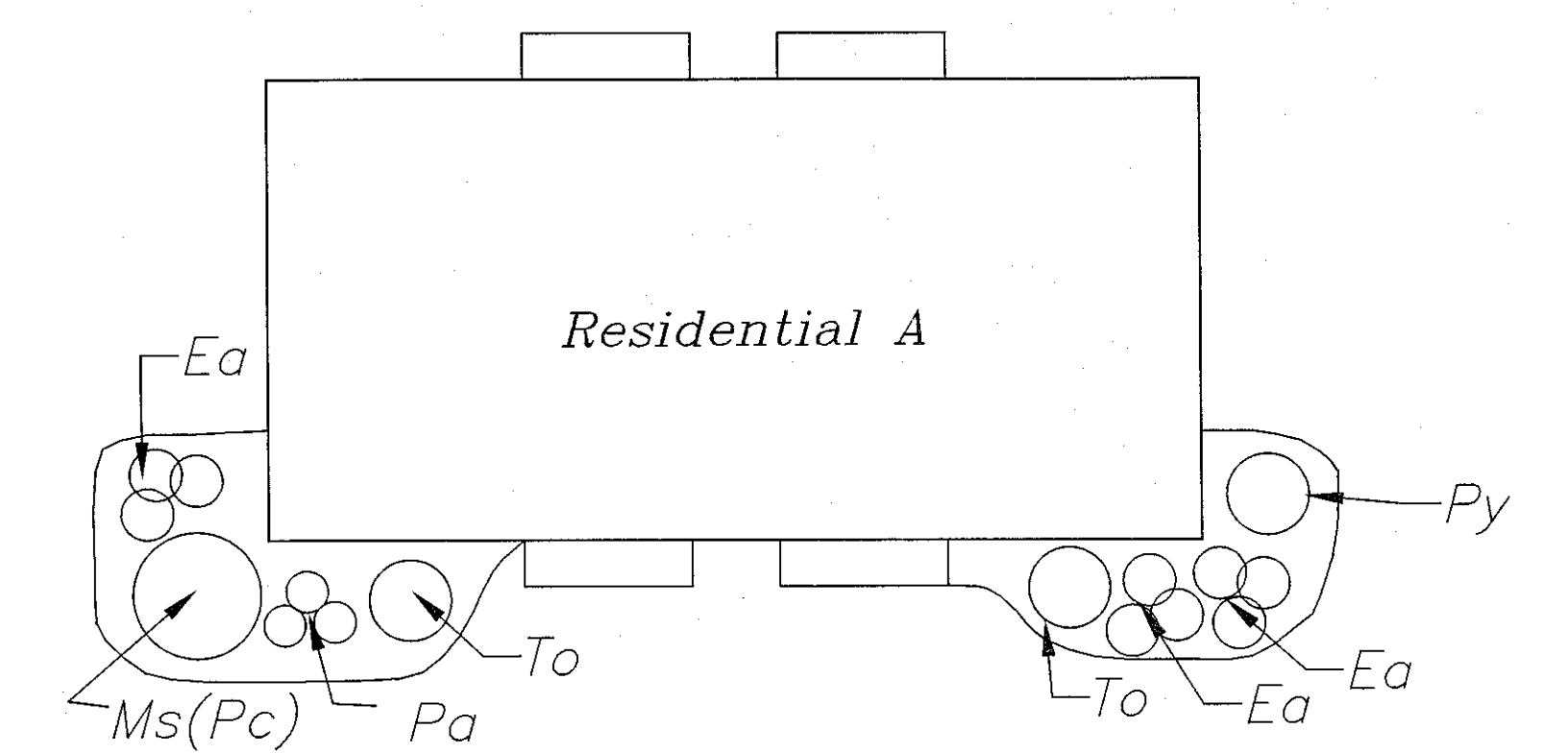
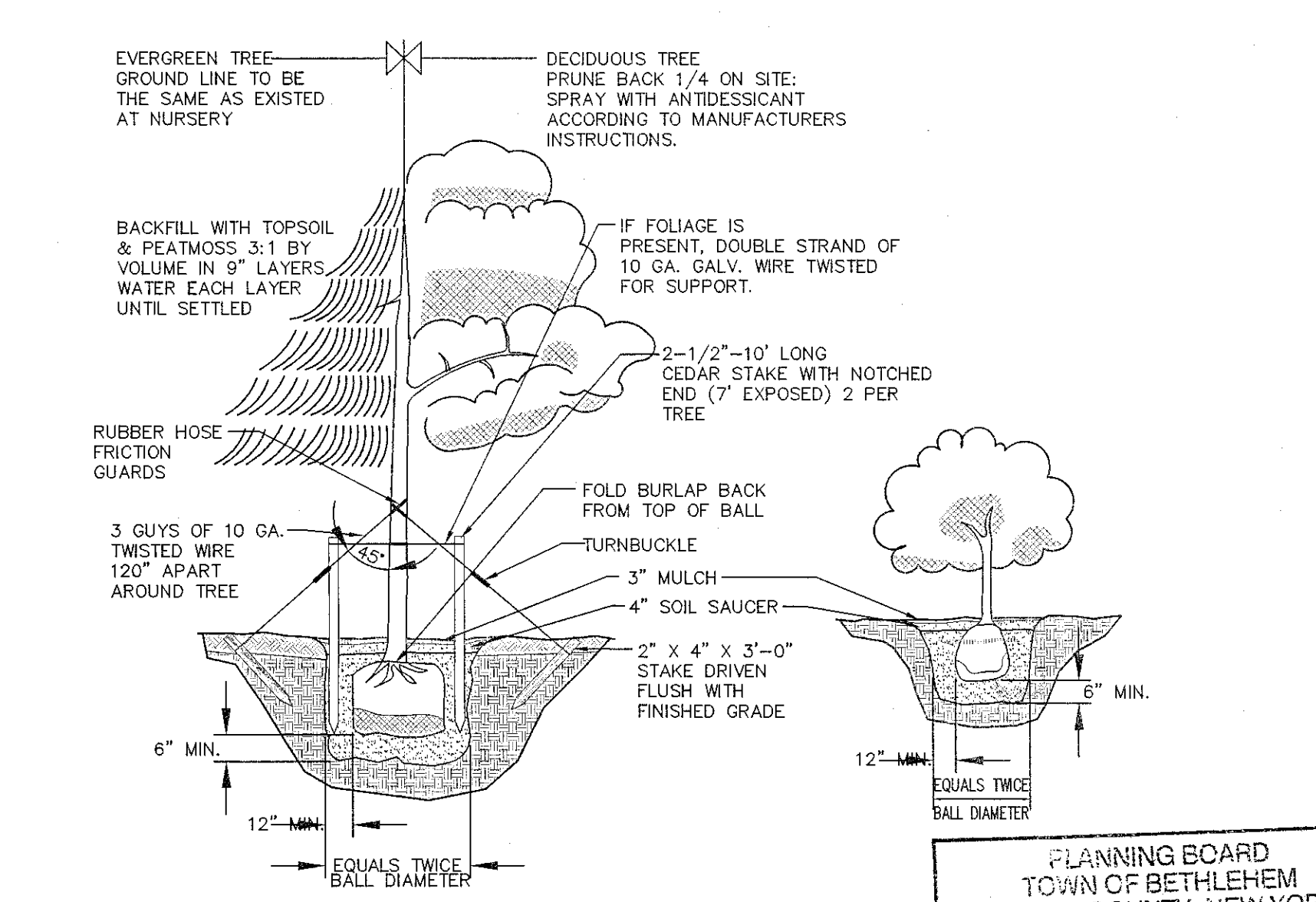
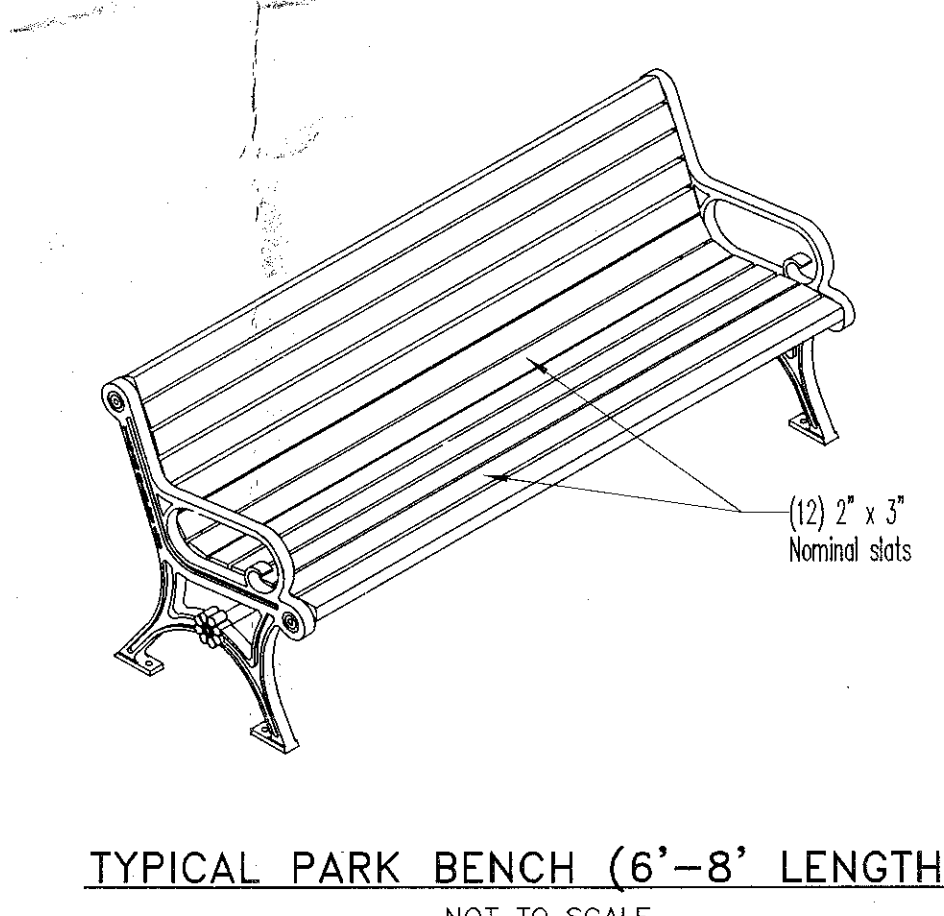


| ABBREV. | COMMON NAME  | SCIENTIFIC NAME      | QTY | SIZE       |
|---------|--|----------------------|-----|------------|
| Ac      | RED MAPLE  | ACER RUBRUM          | 3   | 2"-3" cal. |
| As      | SUGAR MAPLE  | ACER SACCHARUM       | 17  | 2"-3" cal. |
| Cc      | EASTERN REDBUD   | CERCIS CANADENSIS    | 3   | 3" cal.    |
| Fp      | GREEN ASH  | FRAXUS               | 6   | 2"-3" cal. |
| Gt      | HONEY LOCUST   | GLEDISIA TRICANTHOS  | 7   | 2"-3" cal. |
| Ms      | SARGENT CRABAPPLE  | MALUS SARGENTII      | 30  | 2" cal.    |
| Pc      | FLOWERING PEAR   | PYRUS CALLERYANA     | 14  | 2" cal.    |
| Pr      | FLOWERING CHERRY   | PRUNUS SARGENTII     | 13  | 3" cal.    |
| Qb      | SWAMP WHITE OAK  | QUERCUS BICOLOR      | 23  | 2"-3" cal. |
| Qp      | PIN OAK  | QUERCUS PALUSTRIS    | 19  | 2"-3" cal. |
| Or      | RED OAK  | QUERCUS RUBRA        | 5   | 2"-3" cal. |
| Sh      | OAK-LEAF MOUNTAINASH   | SORBUS HYBRIDA       | 4   | 3" cal.    |
| Sn      | BLACK WILLOW   | SALIX NIGRA          | 17  | 2"-3" cal. |
| Jv      | EASTERN RED CEDAR  | JUNIPERUS VIRGINIANA | 12  | 6' HGT.    |
| S       | EXISTING TREES TO BE PROTECTED AND SAVED DURING CONSTRUCTION |                      | 47  |            |

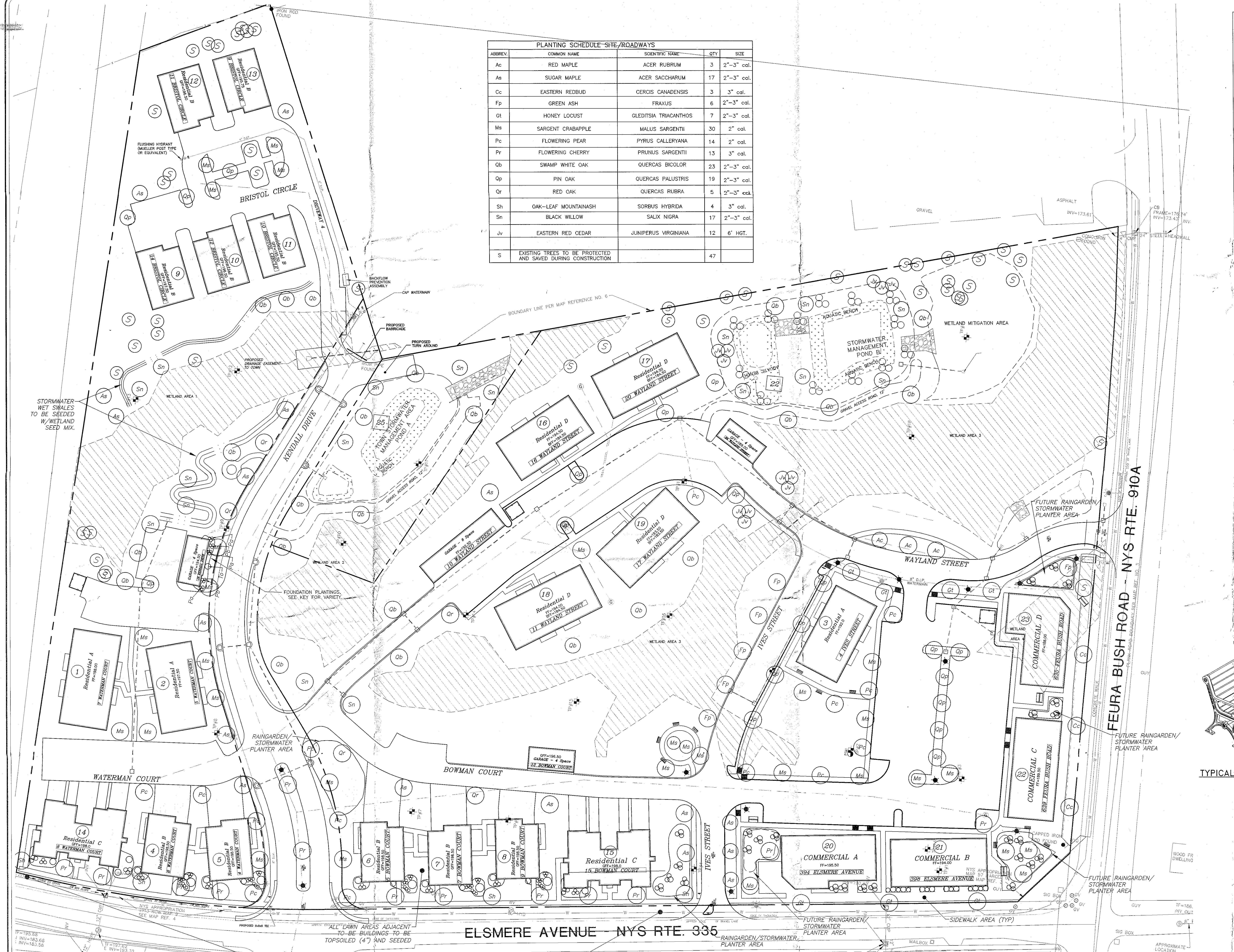
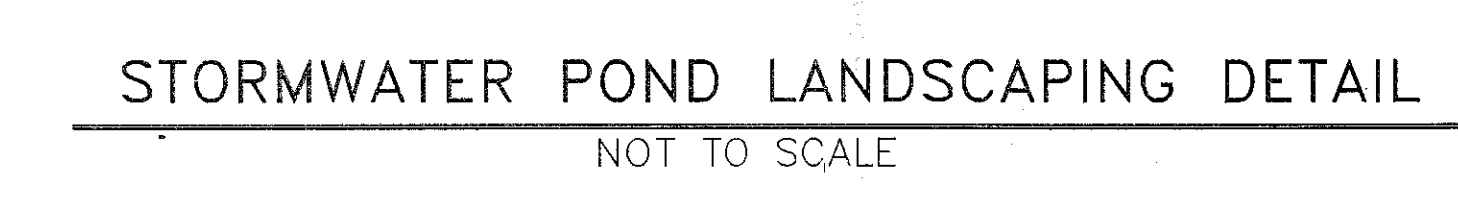
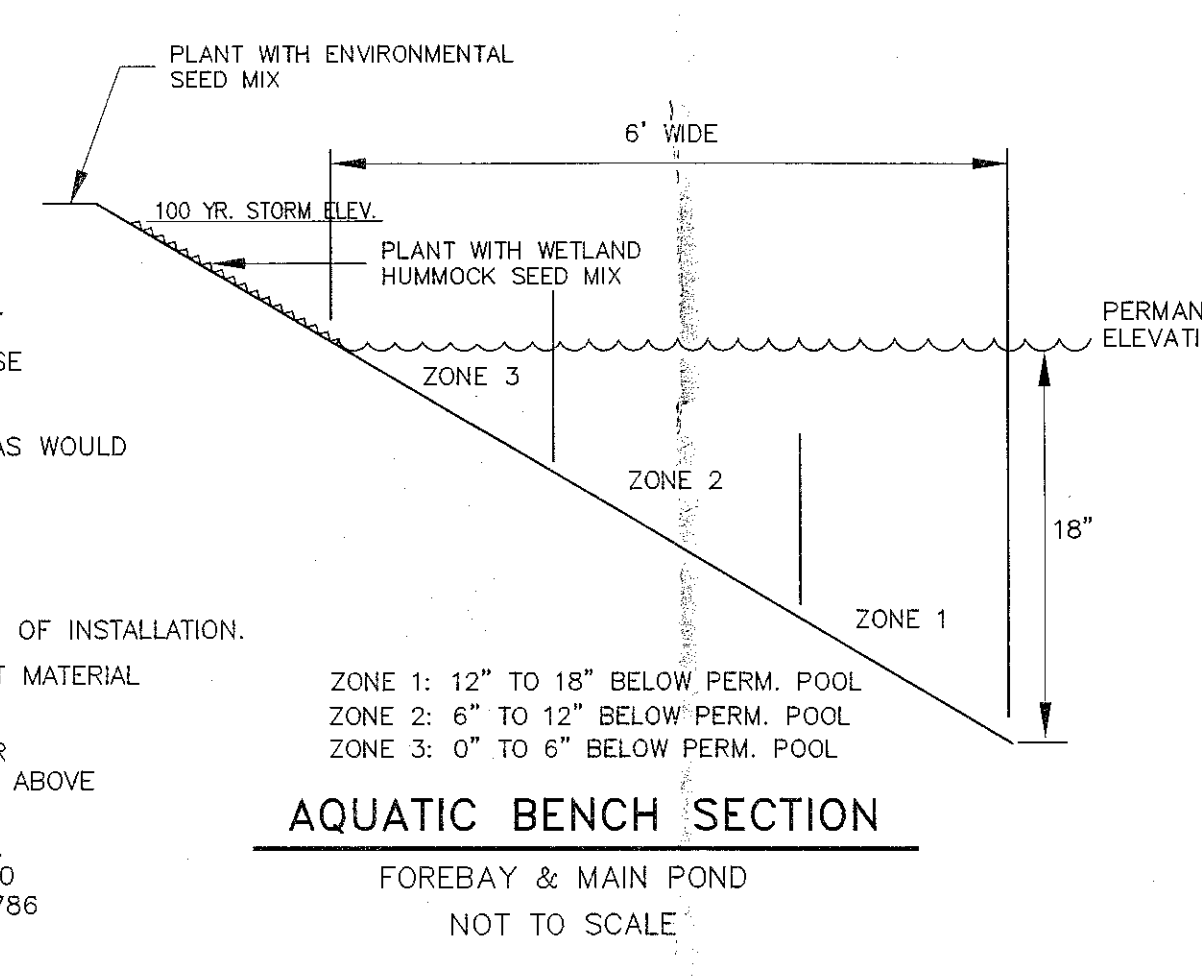


| ABBREV. | COMMON NAME        | SCIENTIFIC NAME        | SIZE    |
|---------|--------------------|------------------------|---------|
| Py      | EASTERN NINEBARK   | PHYSCARPUS OPULOFOLIUS | 2 GAL.  |
| Pb      | SAND CHERRY        | PRUNUS BESSEYI         | 2 GAL.  |
| To      | EASTERN ARBORVITAE | THUJA OCCIDENTALIS     | 2 GAL.  |
| Pa      | POTENTILLA         | POTENTILLA FRUTICOSA   | 2 GAL.  |
| Ea      | BURNING BUSH       | EUONYMUS ALATUS        | 2 GAL.  |
| Ms      | SARGENT CRABAPPLE  | MALUS SARGENTII        | 2" cal. |
| Pc      | FLOWERING PEAR     | PYRUS CALLERYANA       | 2" cal. |



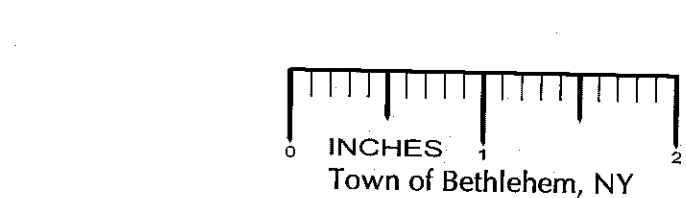
| ZONE | BOT. NAME           | COMMON NAME              | SIZE | SPACING |
|------|---------------------|--------------------------|------|---------|
| 1    | POTAMOGETON NODOSUS | LONG-LEAVED POND WEED    | BR   |         |
| 1    | ELODEA CANADENSIS   | BROAD WATER WEED         | BR   |         |
| 2    | SCIRPUS PUNGENS     | COMMON THREE-SIDED SEDGE | BR   | 48"     |
| 2    | SCIRPUS VALIDUS     | SOFT-STEM BLUEGRASS      | BR   |         |
| 3    | SCIRPUS CYPERINUS   | WOOL GRASS               | BR   |         |
| 3    | POLYGONUM SPP.      | SMART WEED               | BR   |         |

| WHM - WETLAND HUMMOCK SEED MIX   |                   | ESM - ENVIRONMENTAL SEED MIX                                    |                   |
|----------------------------------|-------------------|---|-------------------|
| (SOUTHERN TIER CONSULTING, INC.) |                   | (ENVIRONMENTAL SEED MIX IS NOT TO BE USED IN ANY WETLAND AREAS) |                   |
| CAREX NAMES                      | PERCENT BY WEIGHT | GRASS NAMES   | PERCENT BY WEIGHT |
| CAREX VULPINOIDEA                | 20%               | KENTUCKY BLUE GRASS   | 10%               |
| LEERSIA ORYZOIDES                | 15%               | PERENNIAL RYE GRASS   | 10%               |
| CAREX LURIDA/CRINITA             | 15%               | TIARDIA   | 10%               |
| CAREX ERYTHROGONIA               | 10%               | ORCHARD GRASS   | 10%               |
| SCIRPUS ATROVIRENS/CYPERINUS     | 10%               | BIRDFOOT TREPON   | 10%               |
| CAREX COMPA/INTUMESCENS          | 10%               | RED CLOVER  | 10%               |
|                                  |                   | TALL FESCUE   | 10%               |
|                                  |                   | RED CANARY GRASS  | 10%               |



NOTES:

- PRIOR TO THE START OF THE CLEARING AND GRUBBING AND EXCAVATION THE ENGINEER SHALL MARK THE TREES TO BE SAVED, AND THE LOCATION OF SILT FENCES FOR TEMPORARY EROSION CONTROL & PROTECTIVE BARRIER. PLANS AND DETAILS.
- AQUATIC BENCH PLANTINGS TO BE CREATED ARE GENERALLY SHOWN ON THESE PLANS AND DETAILS.
- ALL AQUATIC BENCH PLANTINGS SHALL BE LAID OUT IN A RANDOM MANNER AS WOULD OCCUR IN THE NATURAL ENVIRONMENT.
- ADDITIONAL PLANTING NOTES:
  - PROVIDE NECESSARY TOPSOIL ENHANCEMENT WITHIN PLANTING AREAS.
  - ALL PLANT MATERIAL SHALL BE GUARANTEED FOR ONE YEAR FROM TIME OF INSTALLATION.
  - CONFORM WITH AMERICAN ASSOCIATION OF NURSEYMEN FOR ALL PLANT MATERIAL STANDARDS.
  - TIME OF PLANTING SHALL GENERALLY BE PRIOR TO JUNE 15 AND AFTER SEPTEMBER 1. OTHER PLANTING REQUIREMENTS SHALL BE AS REQUIRED ABOVE AS WELL AS PER NURSERY AND LANDSCAPER RECOMMENDATIONS.
  - POTENTIAL NURSERY PLANT SOURCE: SOUTHERN TIER CONSULTING, INC. 2077 ROUTE 305, P.O. BOX 30 WEST CLARKSVILLE, NY 14786 (800) 848-7614 (ORDERS)



| NO. | DATE    | REVISIONS                      | BY:    |
|-----|---------|--------------------------------|--------|
| 1   | 8/25/10 | SUBMITTAL FOR SIGNATURE        | J.F.B. |
| 2   | 7/27/10 | TOWN SUBMITTAL (ENG. COMMENTS) | J.F.B. |
| 3   | 6/29/10 | TOWN SUBMITTAL (ENG. COMMENTS) | J.F.B. |
| 4   | 6/29/10 | TOWN SUBMITTAL (ENG. COMMENTS) | J.F.B. |
| 5   | 6/29/10 | TOWN SUBMITTAL (ENG. COMMENTS) | J.F.B. |
| 6   | 6/29/10 | TOWN SUBMITTAL (ENG. COMMENTS) | J.F.B. |
| 7   | 6/29/10 | TOWN SUBMITTAL (ENG. COMMENTS) | J.F.B. |
| 8   | 6/29/10 | TOWN SUBMITTAL (ENG. COMMENTS) | J.F.B. |
| 9   | 6/29/10 | TOWN SUBMITTAL (ENG. COMMENTS) | J.F.B. |
| 10  | 6/29/10 | TOWN SUBMITTAL (ENG. COMMENTS) | J.F.B. |
| 11  | 6/29/10 | TOWN SUBMITTAL (ENG. COMMENTS) | J.F.B. |
| 12  | 6/29/10 | TOWN SUBMITTAL (ENG. COMMENTS) | J.F.B. |
| 13  | 6/29/10 | TOWN SUBMITTAL (ENG. COMMENTS) | J.F.B. |
| 14  | 6/29/10 | TOWN SUBMITTAL (ENG. COMMENTS) | J.F.B. |
| 15  | 6/29/10 | TOWN SUBMITTAL (ENG. COMMENTS) | J.F.B. |
| 16  | 6/29/10 | TOWN SUBMITTAL (ENG. COMMENTS) | J.F.B. |
| 17  | 6/29/10 | TOWN SUBMITTAL (ENG. COMMENTS) | J.F.B. |
| 18  | 6/29/10 | TOWN SUBMITTAL (ENG. COMMENTS) | J.F.B. |
| 19  | 6/29/10 | TOWN SUBMITTAL (ENG. COMMENTS) | J.F.B. |
| 20  | 6/29/10 | TOWN SUBMITTAL (ENG. COMMENTS) | J.F.B. |
| 21  | 6/29/10 | TOWN SUBMITTAL (ENG. COMMENTS) | J.F.B. |
| 22  | 6/29/10 | TOWN SUBMITTAL (ENG. COMMENTS) | J.F.B. |
| 23  | 6/29/10 | TOWN SUBMITTAL (ENG. COMMENTS) | J.F.B. |
| 24  | 6/29/10 | TOWN SUBMITTAL (ENG. COMMENTS) | J.F.B. |
| 25  | 6/29/10 | TOWN SUBMITTAL (ENG. COMMENTS) | J.F.B. |
| 26  | 6/29/10 | TOWN SUBMITTAL (ENG. COMMENTS) | J.F.B. |
| 27  | 6/29/10 | TOWN SUBMITTAL (ENG. COMMENTS) | J.F.B. |
| 28  | 6/29/10 | TOWN SUBMITTAL (ENG. COMMENTS) | J.F.B. |
| 29  | 6/29/10 | TOWN SUBMITTAL (ENG. COMMENTS) | J.F.B. |
| 30  | 6/29/10 | TOWN SUBMITTAL (ENG. COMMENTS) | J.F.B. |
| 31  | 6/29/10 | TOWN SUBMITTAL (ENG. COMMENTS) | J.F.B. |
| 32  | 6/29/10 | TOWN SUBMITTAL (ENG. COMMENTS) | J.F.B. |
| 33  | 6/29/10 | TOWN SUBMITTAL (ENG. COMMENTS) | J.F.B. |
| 34  | 6/29/10 | TOWN SUBMITTAL (ENG. COMMENTS) | J.F.B. |
| 35  | 6/29/10 | TOWN SUBMITTAL (ENG. COMMENTS) | J.F.B. |
| 36  | 6/29/10 | TOWN SUBMITTAL (ENG. COMMENTS) | J.F.B. |
| 37  | 6/29/10 | TOWN SUBMITTAL (ENG. COMMENTS) | J.F.B. |
| 38  | 6/29/10 | TOWN SUBMITTAL (ENG. COMMENTS) | J.F.B. |
| 39  | 6/29/10 | TOWN SUBMITTAL (ENG. COMMENTS) | J.F.B. |
| 40  | 6/29/10 | TOWN SUBMITTAL (ENG. COMMENTS) | J.F.B. |
| 41  | 6/29/10 | TOWN SUBMITTAL (ENG. COMMENTS) | J.F.B. |
| 42  | 6/29/10 | TOWN SUBMITTAL (ENG. COMMENTS) | J.F.B. |
| 43  | 6/29/10 | TOWN SUBMITTAL (ENG. COMMENTS) | J.F.B. |
| 44  | 6/29/10 | TOWN SUBMITTAL (ENG. COMMENTS) | J.F.B. |
| 45  | 6/29/10 | TOWN SUBMITTAL (ENG. COMMENTS) | J.F.B. |
| 46  | 6/29/10 | TOWN SUBMITTAL (ENG. COMMENTS) | J.F.B. |
| 47  | 6/29/10 | TOWN SUBMITTAL (ENG. COMMENTS) | J.F.B. |
| 48  | 6/29/10 | TOWN SUBMITTAL (ENG. COMMENTS) | J.F.B. |
| 49  | 6/29/10 | TOWN SUBMITTAL (ENG. COMMENTS) | J.F.B. |
| 50  | 6/29/10 | TOWN SUBMITTAL (ENG. COMMENTS) | J.F.B. |
| 51  | 6/29/10 | TOWN SUBMITTAL (ENG. COMMENTS) | J.F.B. |
| 52  | 6/29/10 | TOWN SUBMITTAL (ENG. COMMENTS) | J.F.B. |
| 53  | 6/29/10 | TOWN SUBMITTAL (ENG. COMMENTS) | J.F.B. |
| 54  | 6/29/10 | TOWN SUBMITTAL (ENG. COMMENTS) | J.F.B. |
| 55  | 6/29/10 | TOWN SUBMITTAL (ENG. COMMENTS) | J.F.B. |
| 56  | 6/29/10 | TOWN SUBMITTAL (ENG. COMMENTS) | J.F.B. |
| 57  | 6/29/10 | TOWN SUBMITTAL (ENG. COMMENTS) | J.F.B. |
| 58  | 6/29/10 | TOWN SUBMITTAL (ENG. COMMENTS) | J.F.B. |
| 59  | 6/29/10 | TOWN SUBMITTAL (ENG. COMMENTS) | J.F.B. |
| 60  | 6/29/10 | TOWN SUBMITTAL (ENG. COMMENTS) | J.F.B. |
| 61  | 6/29/10 | TOWN SUBMITTAL (ENG. COMMENTS) | J.F.B. |
| 62  | 6/29/10 | TOWN SUBMITTAL (ENG. COMMENTS) | J.F.B. |
| 63  | 6/29/10 | TOWN SUBMITTAL (ENG. COMMENTS) | J.F.B. |
| 64  | 6/29/10 | TOWN SUBMITTAL (ENG. COMMENTS) | J.F.B. |
| 65  | 6/29/10 | TOWN SUBMITTAL (ENG. COMMENTS) | J.F.B. |
| 66  | 6/29/10 | TOWN SUBMITTAL (ENG. COMMENTS) | J.F.B. |
| 67  | 6/29/10 | TOWN SUBMITTAL (ENG. COMMENTS) | J.F.B. |
| 68  | 6/29/10 | TOWN SUBMITTAL (ENG. COMMENTS) | J.F.B. |
| 69  | 6/29/10 | TOWN SUBMITTAL (ENG. COMMENTS) | J.F.B. |
| 70  | 6/29/10 | TOWN SUBMITTAL (ENG. COMMENTS) | J.F.B. |
| 71  | 6/29/10 | TOWN SUBMITTAL (ENG. COMMENTS) | J.F.B. |
| 72  | 6/29/10 | TOWN SUBMITTAL (ENG. COMMENTS) | J.F.B. |
| 73  | 6/29/10 | TOWN SUBMITTAL (ENG. COMMENTS) | J.F.B. |
| 74  | 6/29/10 | TOWN SUBMITTAL (ENG. COMMENTS) | J.F.B. |
| 75  | 6/29/10 | TOWN SUBMITTAL (ENG. COMMENTS) | J.F.B. |
| 76  | 6/29/10 | TOWN SUBMITTAL (ENG. COMMENTS) | J.F.B. |
| 77  | 6/29/10 | TOWN SUBMITTAL (ENG. COMMENTS) | J.F.B. |
| 78  | 6/29/10 | TOWN SUBMITTAL (ENG. COMMENTS) | J.F.B. |
| 79  | 6/29/10 | TOWN SUBMITTAL (ENG. COMMENTS) | J.F.B. |
| 80  | 6/29/10 | TOWN SUBMITTAL (ENG. COMMENTS) | J.F.B. |
| 81  | 6/29/10 | TOWN SUBMITTAL (ENG. COMMENTS) | J.F.B. |
| 82  | 6/29/10 | TOWN SUBMITTAL (ENG. COMMENTS) | J.F.B. |
| 83  | 6/29/10 | TOWN SUBMITTAL (ENG. COMMENTS) | J.F.B. |
| 84  | 6/29/10 | TOWN SUBMITTAL (ENG. COMMENTS) | J.F.B. |
| 85  | 6/29/10 | TOWN SUBMITTAL (ENG. COMMENTS) | J.F.B. |
| 86  | 6/29/10 | TOWN SUBMITTAL (ENG. COMMENTS) | J.F.B. |
| 87  | 6/29/10 | TOWN SUBMITTAL (ENG. COMMENTS) | J.F.B. |
| 88  | 6/29/10 | TOWN SUBMITTAL (ENG. COMMENTS) | J.F.B. |
| 89  | 6/29/10 | TOWN SUBMITTAL (ENG. COMMENTS) | J.F.B. |
| 90  | 6/29/10 | TOWN SUBMITTAL (ENG. COMMENTS) | J.F.B. |
| 91  | 6/29/10 | TOWN SUBMITTAL (ENG. COMMENTS) | J.F.B. |
| 92  | 6/29/10 | TOWN SUBMITTAL (ENG. COMMENTS) | J.F.B. |
| 93  | 6/29/10 | TOWN SUBMITTAL (ENG. COMMENTS) | J.F.B. |
| 94  | 6/29/10 | TOWN SUBMITTAL (ENG. COMMENTS) | J.F.B. |
| 95  | 6/29/10 | TOWN SUBMITTAL (ENG. COMMENTS) | J.F.B. |
| 96  | 6/29/10 | TOWN SUBMITTAL (ENG. COMMENTS) | J.F.B. |
| 97  | 6/29/10 | TOWN SUBMITTAL (ENG. COMMENTS) | J.F.B. |
| 98  | 6/29/10 | TOWN SUBMITTAL (ENG. COMMENTS) | J.F.B. |
| 99  | 6/29/10 | TOWN SUBMITTAL (ENG. COMMENTS) | J.F.B. |
| 100 | 6/29/10 | TOWN SUBMITTAL (ENG. COMMENTS) | J.F.B. |

UNAUTHORIZED ALTERATION OR ADDITION TO THIS DRAWING IS A VIOLATION OF SECTION 7209 SUBDIVISION 2, OF THE NEW YORK STATE EDUCATION LAW. ORIGINAL OF THIS DRAWING BEARING AN ORIGINAL INKED OR EMBOSSED SEAL AND SIGNATURE SHALL BE CONSIDERED TO BE VALID TRUE COPIES.

© Copyright 2009 - Ingalls & Associates, LLP - All rights reserved.

1a  
Ingalls & Associates, LLP  
Engineers / Surveyors  
3887 GULBURN AVENUE  
SHERMANTON, N.Y. 12586  
PHONE: (518) 385-7759  
FAX: (518) 385-2884

PLANNING BOARD  
TOWN OF BETHLEHEM  
ALBANY COUNTY, NEW YORK  
This Site Plan Approved  
*George J. ...*  
The Planning Board  
Date: 11/12/2010

PLANTING PLAN  
KENDALL SQUARE  
LANDS OF WALDENMAIER  
TOWN OF BETHLEHEM  
COUNTY OF ALBANY STATE OF NEW YORK

DATE: APRIL 2009  
CHECKED BY: F.B.  
JOB NO. 08-065  
SCALE: 1"=40'  
DRAWN BY: TAH  
CADD FILE: PLOT

SHEET 4 OF 8