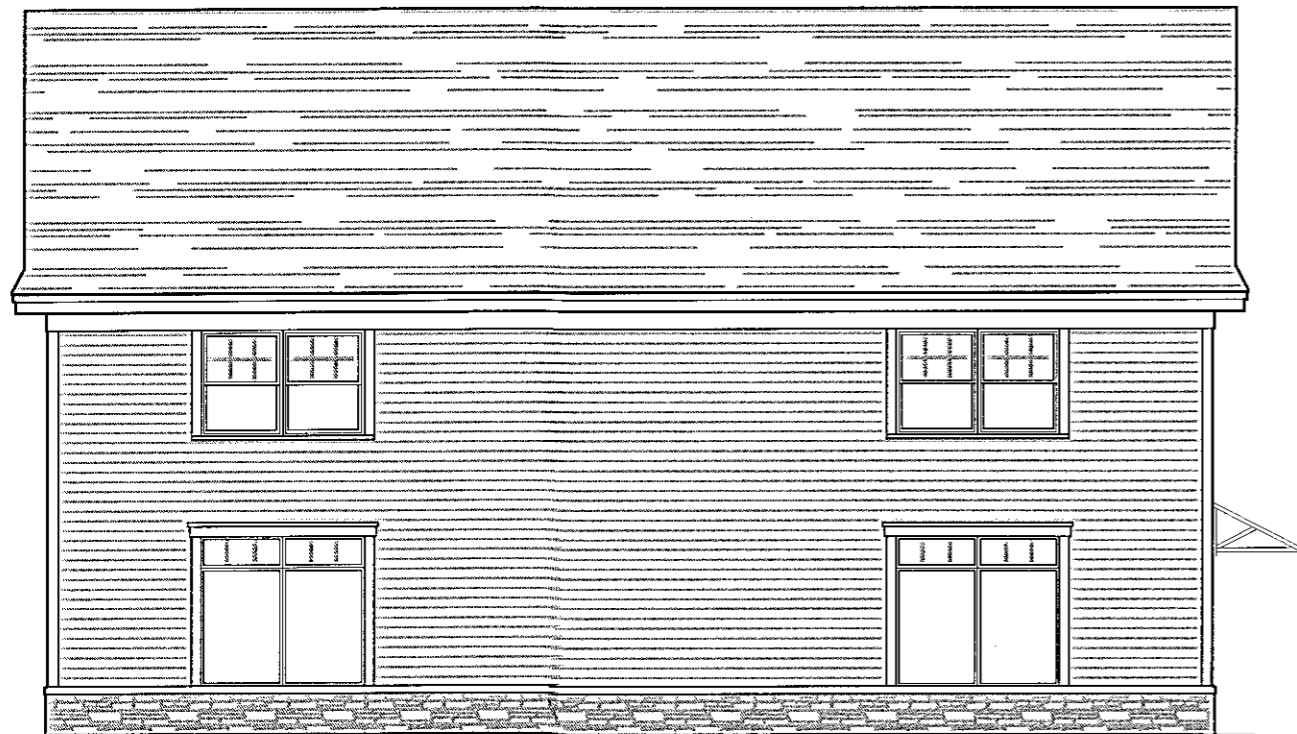




PARKING LOT ELEVATION
SCALE: 1/4" = 1'-0"



IVES ROAD ELEVATION
SCALE: 1/4" = 1'-0"

PLANNING BOARD
TOWN OF BETHLEHEM
ALBANY COUNTY, NEW YORK
By direction of the Chairman.
These drawings are hereby approved.
See sheet(s) 1 of 2 (7)
for date and signature.

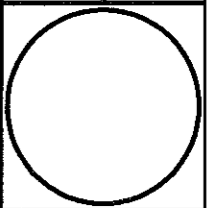
TOWN OF BETHLEHEM, NEW YORK
PLANNING DEPT. ORIGINAL
- **SCANNED** -
0 1 INCHES 2

DATE: 12/15/15
DESIGNED BY:
DRAWN BY:
CHECKED BY:
SCALE: AS NOTED
NOTES:

PROPOSED EXTERIOR
ELEVATIONS

HARRIS A. SANDERS
ARCHITECTS, P.C.
252 WASHINGTON AVENUE, ALBANY, NEW YORK 12210

KENDALL SQUARE
394 ELSMERE AVENUE
DELMAR, NEW YORK



SK4