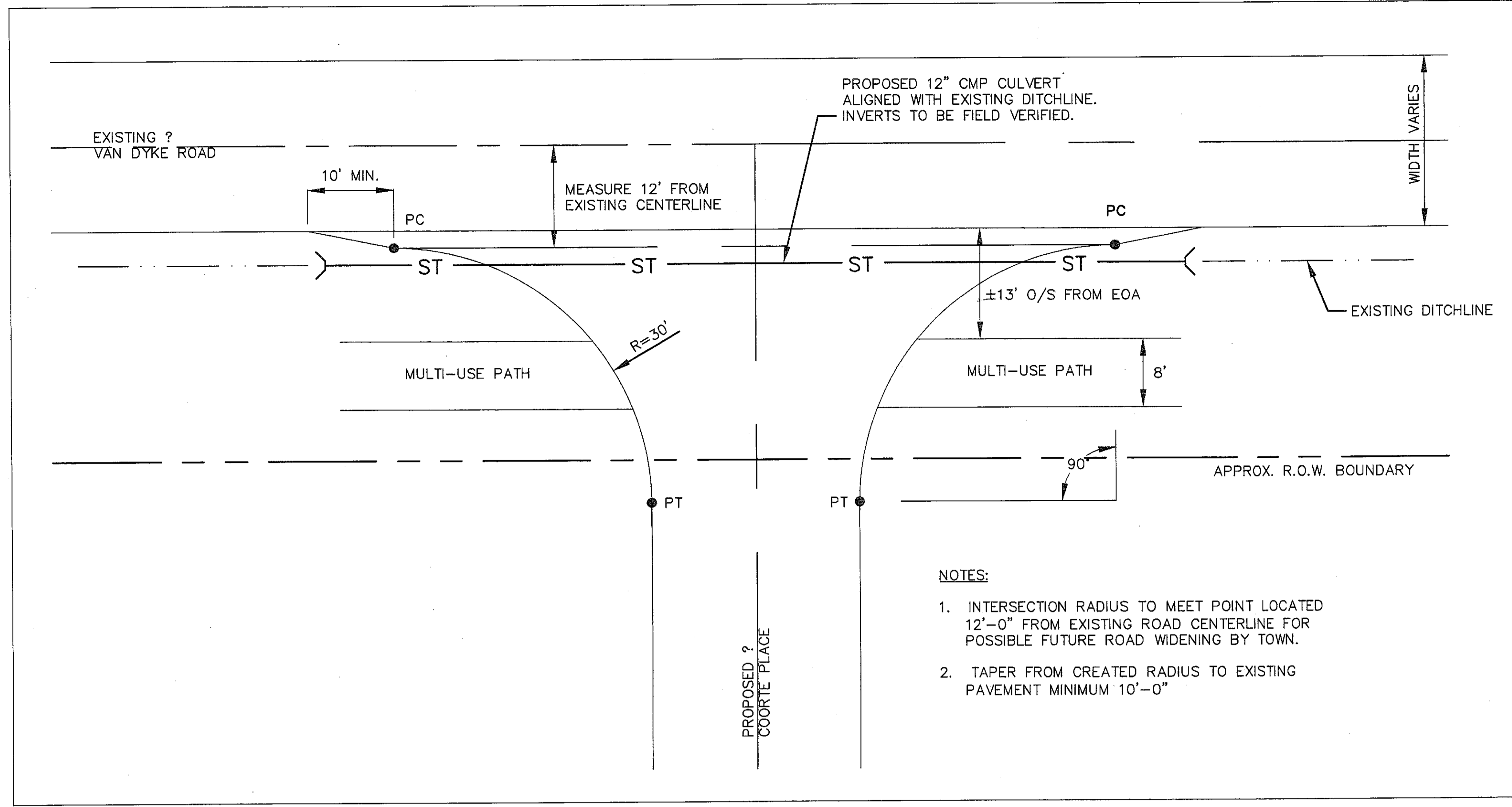
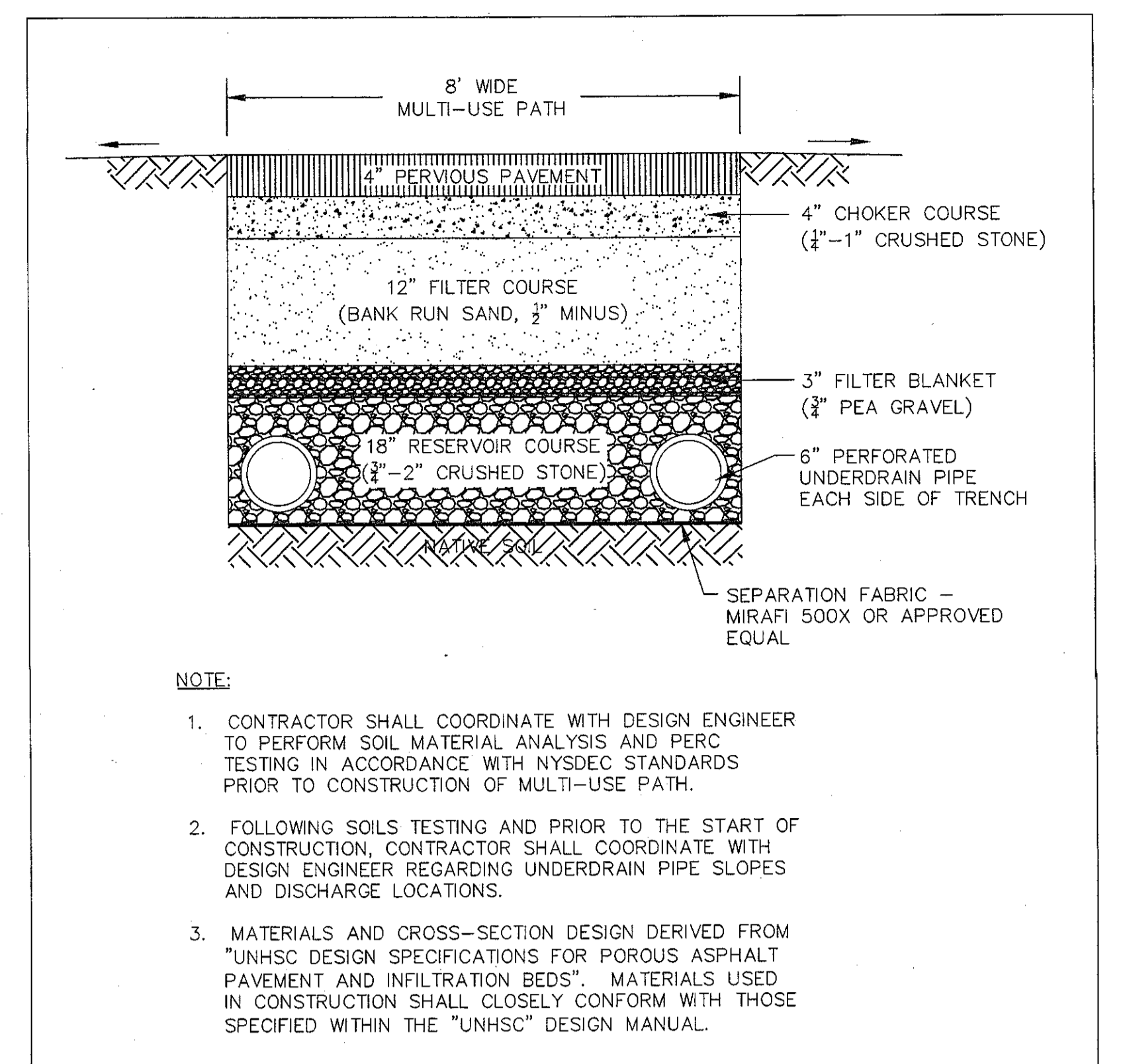


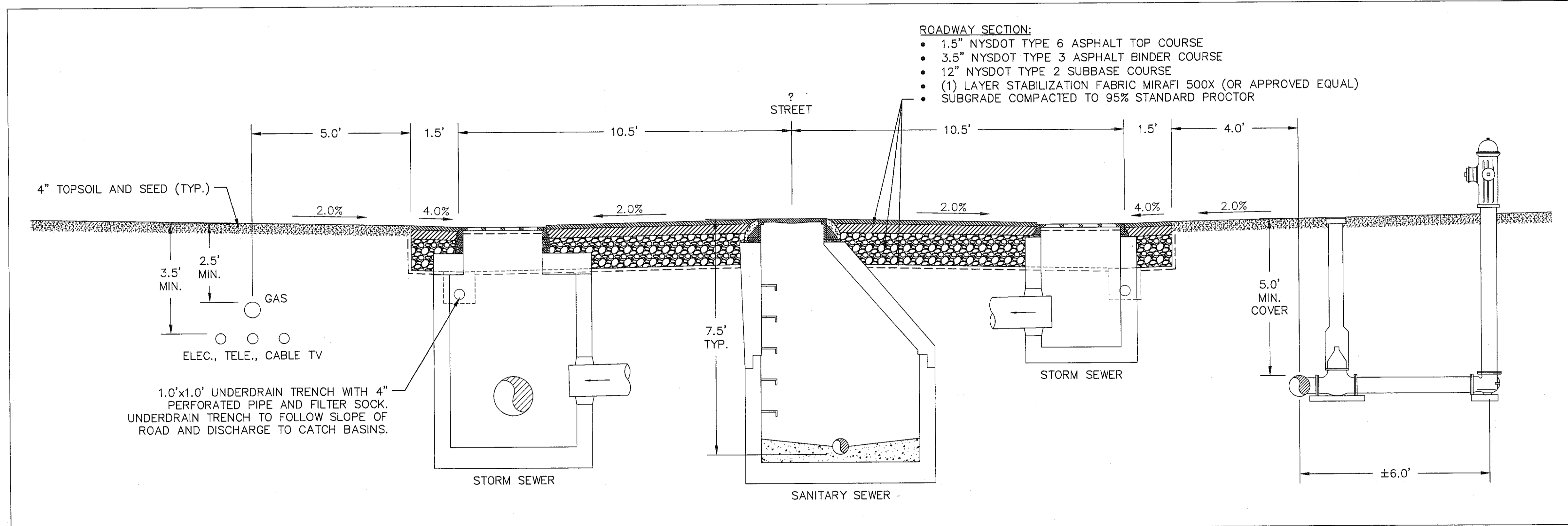
1 STANDARD INTERSECTION DETAIL  
AERTSAN PLACE AND VAN DYKE ROAD



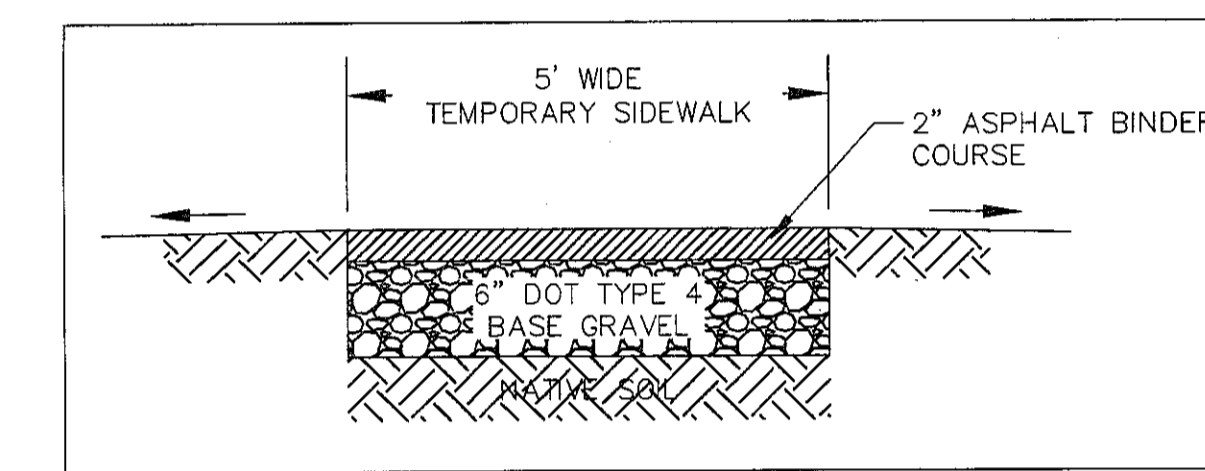
2 STANDARD INTERSECTION DETAIL  
COORTE PLACE AND VAN DYKE ROAD



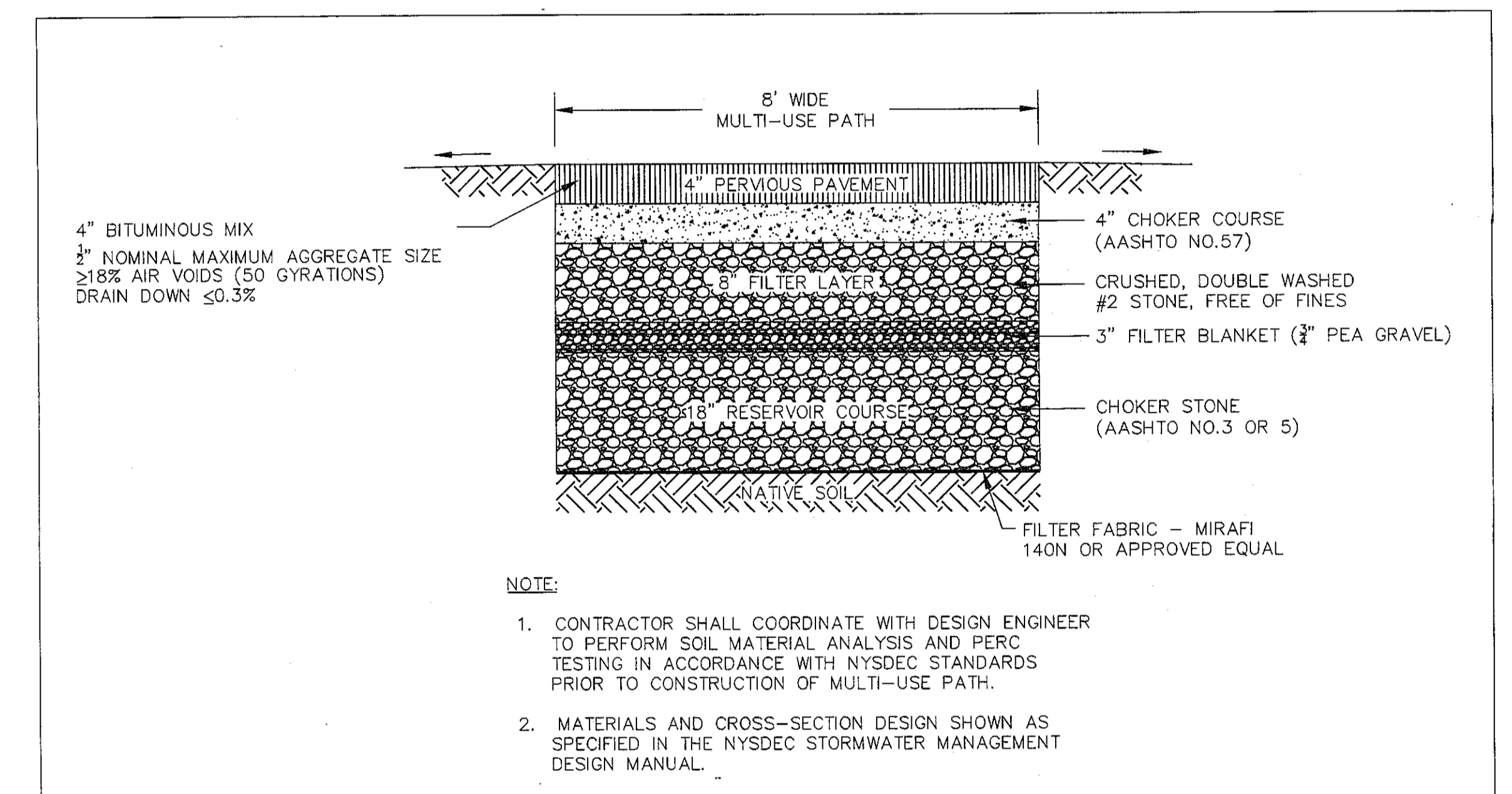
5 ALTERNATE PERMANENT MULTI-USE PATH CROSS SECTION  
(FUTURE PHASES)



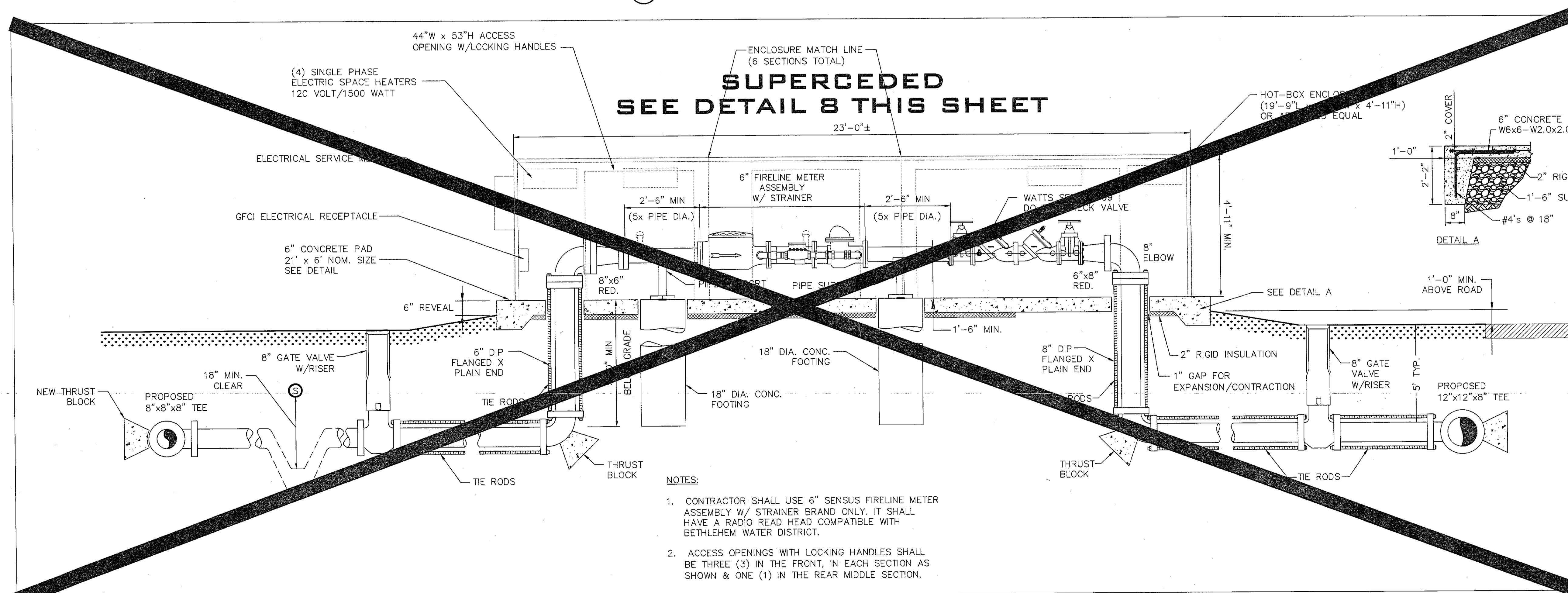
3 TYPICAL SECTION



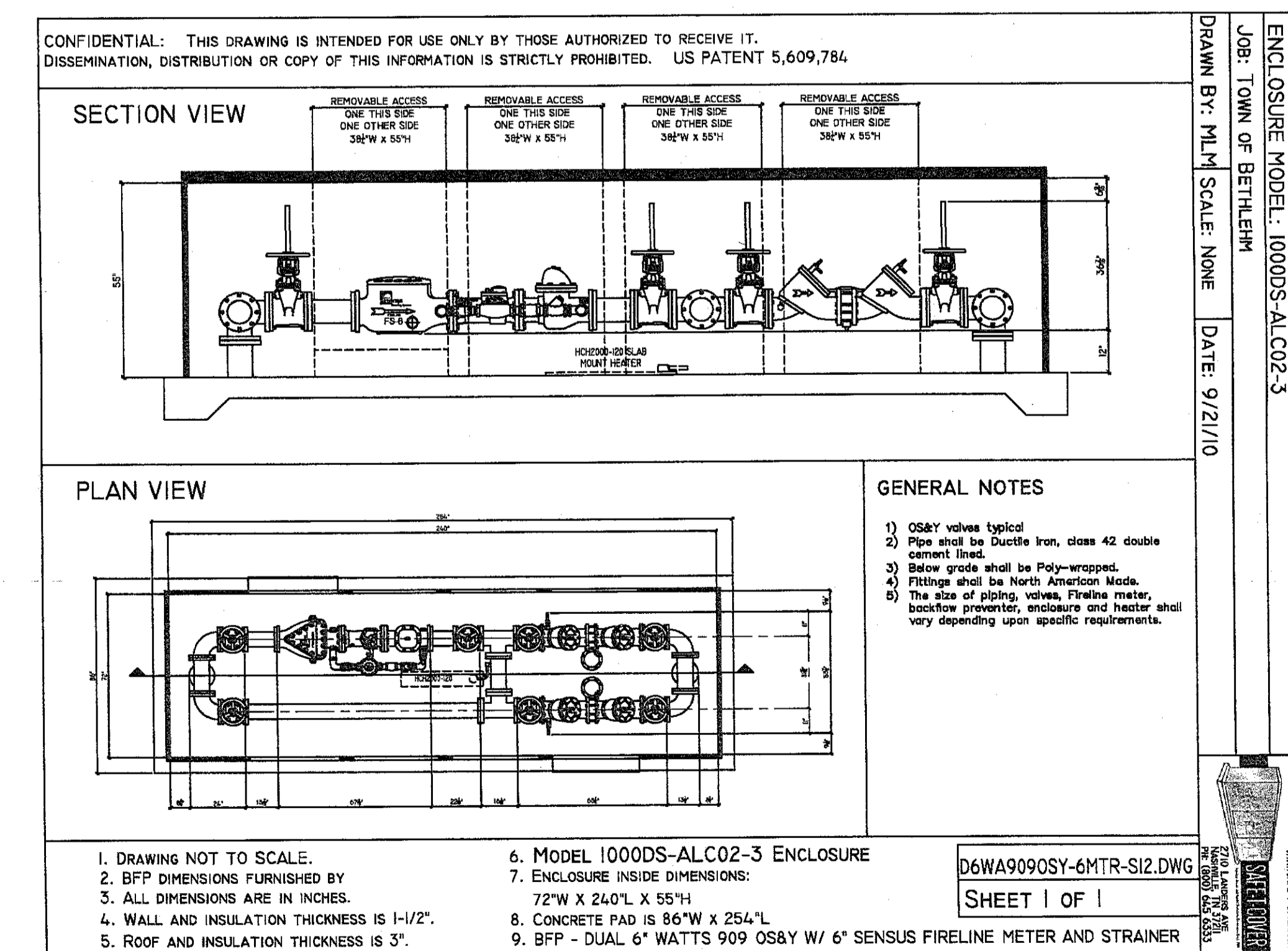
4 TEMPORARY SIDEWALK CROSS SECTION  
(PHASE 1)



6 PREFERRED PERMANENT MULTI-USE PATH CROSS SECTION  
(FUTURE PHASES)



7 WATER MASTER METER ASSEMBLY



7 HOT BOX STANDARD

ALBANY COUNTY DEPARTMENT OF HEALTH  
DIVISION OF ENVIRONMENTAL HEALTH SERVICES  
By direction of the Commissioner of Health, these plans are hereby approved. See first sheet for date and signature.

TOWN OF BETHELEM  
PLANNING BOARD  
TOWN OF BETHELEM  
ALBANY COUNTY, NEW YORK  
This Site Plan Approved  
*[Signature]*  
Title Chairman  
Date 01/23/12  
SPA 165 1A1

REV. No.	DATE	DESCRIPTION	BY

**BEA** BREWER ENGINEERING  
ASSOCIATES, P.C.  
CONSULTING ENGINEERS - PLANNERS  
743 COLUMBIA TURNPIKE, EAST GREENBUSH, NEW YORK 12061  
PHONE: 518.477.5233 FAX: 518.477.5233

DESIGNED BY: DVE  
DRAWN BY: DVE  
CHECKED BY: TER  
APPROVED BY: TER  
SCALE: AS SHOWN  
DATE: 05/18/12  
ISSUED:

**VAN DYKE SPINNEY**  
CONSTRUCTION DETAILS  
TOWN OF BETHELEM COUNTY OF ALBANY  
STATE OF NEW YORK

DRAWING NUMBER:  
**8**  
APR 11-03