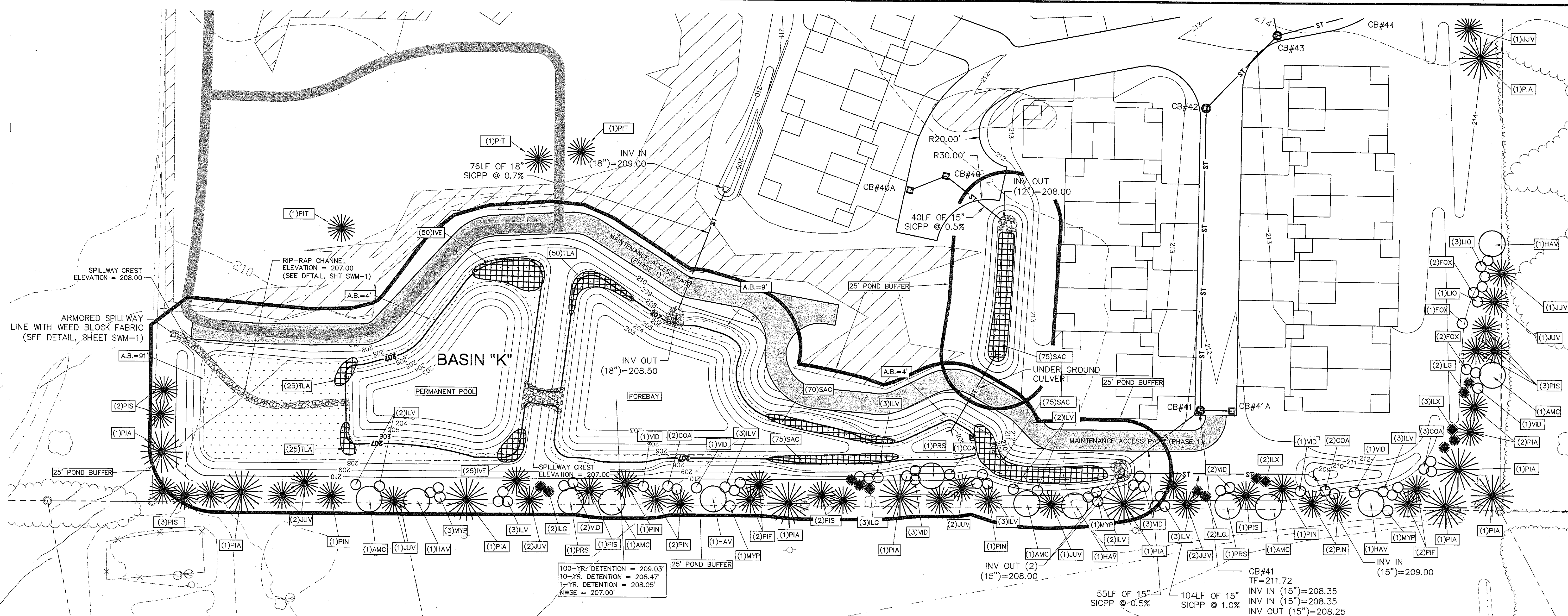


The Contractor shall verify and be responsible for all dimensions. Do not scale this drawing - only dimensions are to be used. The Contractor shall be responsible for all dimensions. Do not scale this drawing - only dimensions are to be used. The Contractor shall be responsible for all dimensions. Do not scale this drawing - only dimensions are to be used.

Unauthorized alteration or reproduction of this drawing is prohibited. Any use of this drawing for any purpose other than that authorized by Stantec is forbidden.

STORMWATER MANAGEMENT - BASIN K
VAN DYKE SPINNEY
AT DELMAR, NEW YORK
VAN DYKE ROAD
TOWN OF BETHLEHEM - COUNTY OF ALBANY - STATE OF NEW YORK

REVISIONS	DATE	REMARKS
1	8/22/09	REVISED PER LAND CONSERVANCY MEETING
2	8/27/09	REVISED PER TOWN BOARD COMMENTS - RESUBMIT TO DIST. DEPT.
3	9/2/09	REVISED PER TOWN BOARD COMMENTS - RESUBMIT TO DIST. DEPT.
4	9/7/09	REVISED PER TOWN BOARD COMMENTS - RESUBMIT TO DIST. DEPT.
5	9/7/09	REVISED PER TOWN BOARD COMMENTS - RESUBMIT TO DIST. DEPT.
6	9/7/09	REVISED PER TOWN BOARD COMMENTS - RESUBMIT TO DIST. DEPT.
7	9/7/09	REVISED PER TOWN BOARD COMMENTS - RESUBMIT TO DIST. DEPT.
8	9/7/09	REVISED PER TOWN BOARD COMMENTS - RESUBMIT TO DIST. DEPT.
9	9/7/09	REVISED PER TOWN BOARD COMMENTS - RESUBMIT TO DIST. DEPT.
10	9/7/09	REVISED PER TOWN BOARD COMMENTS - RESUBMIT TO DIST. DEPT.
11	9/7/09	REVISED PER TOWN BOARD COMMENTS - RESUBMIT TO DIST. DEPT.
12	9/7/09	REVISED PER TOWN BOARD COMMENTS - RESUBMIT TO DIST. DEPT.
13	9/7/09	REVISED PER TOWN BOARD COMMENTS - RESUBMIT TO DIST. DEPT.
14	9/7/09	REVISED PER TOWN BOARD COMMENTS - RESUBMIT TO DIST. DEPT.
15	9/7/09	REVISED PER TOWN BOARD COMMENTS - RESUBMIT TO DIST. DEPT.
16	9/7/09	REVISED PER TOWN BOARD COMMENTS - RESUBMIT TO DIST. DEPT.
17	9/7/09	REVISED PER TOWN BOARD COMMENTS - RESUBMIT TO DIST. DEPT.
18	9/7/09	REVISED PER TOWN BOARD COMMENTS - RESUBMIT TO DIST. DEPT.
19	9/7/09	REVISED PER TOWN BOARD COMMENTS - RESUBMIT TO DIST. DEPT.
20	9/7/09	REVISED PER TOWN BOARD COMMENTS - RESUBMIT TO DIST. DEPT.
21	9/7/09	REVISED PER TOWN BOARD COMMENTS - RESUBMIT TO DIST. DEPT.
22	9/7/09	REVISED PER TOWN BOARD COMMENTS - RESUBMIT TO DIST. DEPT.
23	9/7/09	REVISED PER TOWN BOARD COMMENTS - RESUBMIT TO DIST. DEPT.
24	9/7/09	REVISED PER TOWN BOARD COMMENTS - RESUBMIT TO DIST. DEPT.
25	9/7/09	REVISED PER TOWN BOARD COMMENTS - RESUBMIT TO DIST. DEPT.
26	9/7/09	REVISED PER TOWN BOARD COMMENTS - RESUBMIT TO DIST. DEPT.
27	9/7/09	REVISED PER TOWN BOARD COMMENTS - RESUBMIT TO DIST. DEPT.
28	9/7/09	REVISED PER TOWN BOARD COMMENTS - RESUBMIT TO DIST. DEPT.
29	9/7/09	REVISED PER TOWN BOARD COMMENTS - RESUBMIT TO DIST. DEPT.
30	9/7/09	REVISED PER TOWN BOARD COMMENTS - RESUBMIT TO DIST. DEPT.
31	9/7/09	REVISED PER TOWN BOARD COMMENTS - RESUBMIT TO DIST. DEPT.
32	9/7/09	REVISED PER TOWN BOARD COMMENTS - RESUBMIT TO DIST. DEPT.
33	9/7/09	REVISED PER TOWN BOARD COMMENTS - RESUBMIT TO DIST. DEPT.
34	9/7/09	REVISED PER TOWN BOARD COMMENTS - RESUBMIT TO DIST. DEPT.
35	9/7/09	REVISED PER TOWN BOARD COMMENTS - RESUBMIT TO DIST. DEPT.
36	9/7/09	REVISED PER TOWN BOARD COMMENTS - RESUBMIT TO DIST. DEPT.
37	9/7/09	REVISED PER TOWN BOARD COMMENTS - RESUBMIT TO DIST. DEPT.
38	9/7/09	REVISED PER TOWN BOARD COMMENTS - RESUBMIT TO DIST. DEPT.
39	9/7/09	REVISED PER TOWN BOARD COMMENTS - RESUBMIT TO DIST. DEPT.
40	9/7/09	REVISED PER TOWN BOARD COMMENTS - RESUBMIT TO DIST. DEPT.
41	9/7/09	REVISED PER TOWN BOARD COMMENTS - RESUBMIT TO DIST. DEPT.
42	9/7/09	REVISED PER TOWN BOARD COMMENTS - RESUBMIT TO DIST. DEPT.
43	9/7/09	REVISED PER TOWN BOARD COMMENTS - RESUBMIT TO DIST. DEPT.
44	9/7/09	REVISED PER TOWN BOARD COMMENTS - RESUBMIT TO DIST. DEPT.
45	9/7/09	REVISED PER TOWN BOARD COMMENTS - RESUBMIT TO DIST. DEPT.
46	9/7/09	REVISED PER TOWN BOARD COMMENTS - RESUBMIT TO DIST. DEPT.
47	9/7/09	REVISED PER TOWN BOARD COMMENTS - RESUBMIT TO DIST. DEPT.
48	9/7/09	REVISED PER TOWN BOARD COMMENTS - RESUBMIT TO DIST. DEPT.
49	9/7/09	REVISED PER TOWN BOARD COMMENTS - RESUBMIT TO DIST. DEPT.
50	9/7/09	REVISED PER TOWN BOARD COMMENTS - RESUBMIT TO DIST. DEPT.
51	9/7/09	REVISED PER TOWN BOARD COMMENTS - RESUBMIT TO DIST. DEPT.
52	9/7/09	REVISED PER TOWN BOARD COMMENTS - RESUBMIT TO DIST. DEPT.
53	9/7/09	REVISED PER TOWN BOARD COMMENTS - RESUBMIT TO DIST. DEPT.
54	9/7/09	REVISED PER TOWN BOARD COMMENTS - RESUBMIT TO DIST. DEPT.
55	9/7/09	REVISED PER TOWN BOARD COMMENTS - RESUBMIT TO DIST. DEPT.
56	9/7/09	REVISED PER TOWN BOARD COMMENTS - RESUBMIT TO DIST. DEPT.
57	9/7/09	REVISED PER TOWN BOARD COMMENTS - RESUBMIT TO DIST. DEPT.
58	9/7/09	REVISED PER TOWN BOARD COMMENTS - RESUBMIT TO DIST. DEPT.
59	9/7/09	REVISED PER TOWN BOARD COMMENTS - RESUBMIT TO DIST. DEPT.
60	9/7/09	REVISED PER TOWN BOARD COMMENTS - RESUBMIT TO DIST. DEPT.
61	9/7/09	REVISED PER TOWN BOARD COMMENTS - RESUBMIT TO DIST. DEPT.
62	9/7/09	REVISED PER TOWN BOARD COMMENTS - RESUBMIT TO DIST. DEPT.
63	9/7/09	REVISED PER TOWN BOARD COMMENTS - RESUBMIT TO DIST. DEPT.
64	9/7/09	REVISED PER TOWN BOARD COMMENTS - RESUBMIT TO DIST. DEPT.
65	9/7/09	REVISED PER TOWN BOARD COMMENTS - RESUBMIT TO DIST. DEPT.
66	9/7/09	REVISED PER TOWN BOARD COMMENTS - RESUBMIT TO DIST. DEPT.
67	9/7/09	REVISED PER TOWN BOARD COMMENTS - RESUBMIT TO DIST. DEPT.
68	9/7/09	REVISED PER TOWN BOARD COMMENTS - RESUBMIT TO DIST. DEPT.
69	9/7/09	REVISED PER TOWN BOARD COMMENTS - RESUBMIT TO DIST. DEPT.
70	9/7/09	REVISED PER TOWN BOARD COMMENTS - RESUBMIT TO DIST. DEPT.
71	9/7/09	REVISED PER TOWN BOARD COMMENTS - RESUBMIT TO DIST. DEPT.
72	9/7/09	REVISED PER TOWN BOARD COMMENTS - RESUBMIT TO DIST. DEPT.
73	9/7/09	REVISED PER TOWN BOARD COMMENTS - RESUBMIT TO DIST. DEPT.
74	9/7/09	REVISED PER TOWN BOARD COMMENTS - RESUBMIT TO DIST. DEPT.
75	9/7/09	REVISED PER TOWN BOARD COMMENTS - RESUBMIT TO DIST. DEPT.
76	9/7/09	REVISED PER TOWN BOARD COMMENTS - RESUBMIT TO DIST. DEPT.
77	9/7/09	REVISED PER TOWN BOARD COMMENTS - RESUBMIT TO DIST. DEPT.
78	9/7/09	REVISED PER TOWN BOARD COMMENTS - RESUBMIT TO DIST. DEPT.
79	9/7/09	REVISED PER TOWN BOARD COMMENTS - RESUBMIT TO DIST. DEPT.
80	9/7/09	REVISED PER TOWN BOARD COMMENTS - RESUBMIT TO DIST. DEPT.
81	9/7/09	REVISED PER TOWN BOARD COMMENTS - RESUBMIT TO DIST. DEPT.
82	9/7/09	REVISED PER TOWN BOARD COMMENTS - RESUBMIT TO DIST. DEPT.
83	9/7/09	REVISED PER TOWN BOARD COMMENTS - RESUBMIT TO DIST. DEPT.
84	9/7/09	REVISED PER TOWN BOARD COMMENTS - RESUBMIT TO DIST. DEPT.
85	9/7/09	REVISED PER TOWN BOARD COMMENTS - RESUBMIT TO DIST. DEPT.
86	9/7/09	REVISED PER TOWN BOARD COMMENTS - RESUBMIT TO DIST. DEPT.
87	9/7/09	REVISED PER TOWN BOARD COMMENTS - RESUBMIT TO DIST. DEPT.
88	9/7/09	REVISED PER TOWN BOARD COMMENTS - RESUBMIT TO DIST. DEPT.
89	9/7/09	REVISED PER TOWN BOARD COMMENTS - RESUBMIT TO DIST. DEPT.
90	9/7/09	REVISED PER TOWN BOARD COMMENTS - RESUBMIT TO DIST. DEPT.
91	9/7/09	REVISED PER TOWN BOARD COMMENTS - RESUBMIT TO DIST. DEPT.
92	9/7/09	REVISED PER TOWN BOARD COMMENTS - RESUBMIT TO DIST. DEPT.
93	9/7/09	REVISED PER TOWN BOARD COMMENTS - RESUBMIT TO DIST. DEPT.
94	9/7/09	REVISED PER TOWN BOARD COMMENTS - RESUBMIT TO DIST. DEPT.
95	9/7/09	REVISED PER TOWN BOARD COMMENTS - RESUBMIT TO DIST. DEPT.
96	9/7/09	REVISED PER TOWN BOARD COMMENTS - RESUBMIT TO DIST. DEPT.
97	9/7/09	REVISED PER TOWN BOARD COMMENTS - RESUBMIT TO DIST. DEPT.
98	9/7/09	REVISED PER TOWN BOARD COMMENTS - RESUBMIT TO DIST. DEPT.
99	9/7/09	REVISED PER TOWN BOARD COMMENTS - RESUBMIT TO DIST. DEPT.
100	9/7/09	REVISED PER TOWN BOARD COMMENTS - RESUBMIT TO DIST. DEPT.



PLANT LIST BASIN K

SYMBOL	BOTANICAL NAME	COMMON NAME	SIZE	SPACING	QTY.
TLA	TYPHA SP.	CATTAIL	TUBES	SPACED EVENLY	100
SAC	SCIRPUS ACUTUS	HARDSTEM BULRUSH	TUBES	SPACED EVENLY	345
IVE	IRIS VERSICOLOR	BLUE FLAG IRIS	TUBES	SPACED EVENLY	75
ARE	ALNUS REGOSA	SPECKLED ALDER	7 GAL.	AS SHOWN	0
ARU	ACER RUBRUM	RED MAPLE	15 GAL.	AS SHOWN	0
BEI	BETULA NIGRA	RIVER BIRCH	N/A	N/A	0
CSE	CORNUS SERICEA 'CARDINAL'	RED OSIER DOGWOOD	N/A	N/A	0
COC	CERHALANTHUS OCCIDENTALIS	BUTTERFLYSH	N/A	N/A	0
IVER	ILEX VERTICILLATA	WINTERBERRY	3" - 4"	N/A	18
GBI	GINKGO BILBOA	GINKGO	2-1/2" - 3" CAL.	AS SHOWN	0
SAL	SALIX FLAME	WILLOW	3" - 4"	AS SHOWN	0

BUFFER PLANT LIST

SYMBOL	BOTANICAL NAME	COMMON NAME	PLANTED SIZE	MATURE SIZE	SPACING	QUANTITY
LIO	LIGUSTRUM OBTUSIFOLIA	BORDER PRIVET	2-3" HT.	15'-25'	AS SHOWN	4
HAV	HAMAMELIS VIRGINIANA	COMMON WITCHAZEL	4-5" HT.	15'-30'	AS SHOWN	5
AMC	AMELANCHIER CANADENSIS	SHARBLON SERVICEBERRY	4-5" HT.	6'-20'	AS SHOWN	4
ILG	ILEX GLABRA	INKBERRY	1.5'-2" HT.	6'-8'	AS SHOWN	9
VID	VIOLINUS OBTUSIFOLIUM	ARROWWOOD	2-3" HT.	10'	AS SHOWN	5
ILX	ILEX X MESSUREAE	MESERVE HYBRID HOLLIES	2-3" HT.	6'-10'	AS SHOWN	15
COA	CORNUS AMOMUM	SILKY DOGWOOD	2-3" HT.	6'-10'	AS SHOWN	8
PIF	PINUS FLEXILIS	LIMBER PINE	6-8" HT.	40'-50'	AS SHOWN	4
MYP	MYRTICA PENNSYLVANICA	BAYBERRY	2-3" HT.	5'-12'	AS SHOWN	6
ILV	ILEX VERTICILLATA	COMMON WINTERBERRY	2-3" HT.	6'-10'	AS SHOWN	24
VID	VIOLINUS OBTUSIFOLIUM	ARROWWOOD	2-3" HT.	10'	AS SHOWN	5
PRN	PRUNUS SEROTINA	BLACK CHERRY	4-5" HT.	50'-60'	AS SHOWN	8
PIS	PINUS SYLVESTRIS	SCOTCH PINE	5-6" HT.	30'-60'	AS SHOWN	3
PII	PINUS STROBUS	EASTERN WHITE PINE	6-8" HT.	50'-60'	AS SHOWN	3
PIA	PICEA ABIES	NORWAY SPRUCE	5-6" HT.	40'-60'	AS SHOWN	8
JUV	JUNIPERUS VIRGINIANA	EASTERN RED CEDAR	4-6" HT.	40'-50'	AS SHOWN	12
FOX	FORSTHIA X INTERMEDIA	BORDER FORSTHIA	2-3" HT.	8'-10'	AS SHOWN	5

DETENTION POND PLANTING SPECIFICATIONS

- SHALLOW WATER EMERGENT COMMUNITIES
- PRIOR TO PLANTING, PUMP POND DOWN TO A LEVEL THAT WILL FACILITATE INSTALLATION OF EROSION CONTROL MEASURES.
- PLANTS SHALL BE A MINIMUM SIZE OF 2 INCHES IN DIAMETER AND 4 INCHES IN DEPTH. EACH PLANT SHALL BE THOROUGHLY ROOTED.
- WATER EMERGENT PLANTS SHALL BE PLANTED AT THE PERMANENT WATER LINE TO 6 INCHES BELOW THE PERMANENT WATER LINE.
- PLANTS SHALL BE DIVIDED INTO GROUPS AND COMMON NAMES SHALL BE PLANTED IN GROUPS AND SPACED 18 INCHES ON CENTER.
- NO INSTALLATION SHALL OCCUR UNTIL TEMPORARY STABILIZATION OF THE LOT HAS OCCURRED AND THE WATER LEVEL OF THE PERMANENT POOL HAS BEEN REACHED AND SUSTAINED.

ESTABLISHING AND MAINTAINING TREES, SHRUBS AND VINES

GENERAL:

- PLANTS SHALL CONFORM TO THE SPECIES, VARIETY, SIZE, NUMBER, AND CONDITIONS AS STATED ON LANDSCAPE PLANNING. AMERICAN STANDARD FOR NURSERY STOCK - QUALITY OF PLANT MATERIALS.
- DURABLE, LEGIBLE LABELS WITH THE SCIENTIFIC AND COMMON NAME AND CULTIVAR SHALL BE SECURELY ATTACHED TO PLANTS. BUNDLES OF SEEDLINGS, CONTAINERS, AND/OR PLANTS.
- PRIOR TO DELIVERY, THE TRUNK, BRANCHES, AND FOLIAGE OF THE PLANTS SHALL BE SPRAYED WITH NON-TOXIC ANTIDESICCANT, APPLIED ACCORDING TO THE MANUFACTURER'S RECOMMENDATIONS.

PLANTING TIME

- DECIDUOUS TREES AND SHRUBS: APRIL 1 TO JUNE 1 AND OCTOBER 15 TO DECEMBER 15.
- EVERGREEN TREES AND SHRUBS: APRIL 1 TO JUNE 1 AND SEPTEMBER 1 TO NOVEMBER 15.

SPACING

- ALL TREES AND SHRUBS SHALL BE PLANTED AS SPECIFIED ON LANDSCAPE DRAWINGS OR AS SPECIFIED IN THE FIELD BY THE DESIGN ENGINEERS OR LANDSCAPE ARCHITECT.
- FOR CLUMPS, PLANT SPACING SO MATURE SHRUBS WILL BE TOUCHING OR OVERLAPPING BY ONLY 1 OR 2 FEET.

SITE PREPARATION

- INDIVIDUAL SITES FOR PLANTING SEEDLINGS SHALL BE PREPARED BY SCALPING THE SOIL AWAY FROM A FOUR FOOT SQUARE AREA WHERE THE TREE OR SHRUB IS TO BE PLANTED.
- ALL PLANTING BEDS SHALL BE CULTIVATED TO A DEPTH OF 8 INCHES, OR CHEMICALLY TREATED FOR WEED CONTROL.

PLANTING

- PLANTS SHALL BE LOCATED AS SHOWN ON PLANS AND/OR DRAWINGS AND, WHERE NECESSARY, LOCATED ON THE SITE BY STAKES, FLAGS OR OTHER MEANS.
- PRIOR TO PLANTING, GALVANIZED WIRE BASKET SECURING ROOT BALL, WHITE AND ROLL DOWN BURLAP OR REMOVE AS MUCH TREATED BURLAP AS POSSIBLE.
- THE PLANTS SHALL BE SET UPRIGHT IN HOLES.
- THE PLANTING HOLE SHALL BE THREE TIMES WIDER THAN THE DIAMETER OF THE PLANT, AT A DEPTH THAT ALLOWS THE ROOT FLAIR TO BE ABOVE FINISHED GRADE AND SHALL BE BACKFILLED WITH NATIVE TOP SOIL, WHERE POSSIBLE.
- ALL PLANTS SHALL BE THOROUGHLY WATERED ON THE SAME DAY OF PLANTING. PLANTS THAT HAVE SETTLED SHALL BE RESET TO GRADE.

WEAPING

- IMMEDIATELY AFTER PLANTING, WRAP DECIDUOUS TREE TRUNKS FROM THE BOTTOM TO THE FIRST LIMB WITH A 4 INCH WIDE BITUMINOUS IMPREGNATED, INSECT RESISTANT TAPE OR PAPER MANUFACTURED FOR THAT PURPOSE, THE WITH JUTE (BAG STRINGS) AT TOP AND BOTTOM. THE WRAP SHOULD BE REMOVED PER NURSERY RECOMMENDATIONS.

MULCHING

- MULCH THE DISTURBED AREA AROUND INDIVIDUAL TREES AND SHRUBS WITH A 2-3" LAYER OF WOOD CHIPS. PULL WOOD CHIPS 1 INCH.

CLEANUP AND MAINTENANCE

- AFTER ALL WORK IS COMPLETE, ALL EXCESS SOIL, DEBRIS, ETC. SHALL BE REMOVED FROM THE SITE.
- WATER PLANTS TWO WEEKS AFTER PLANTING. FOR TWO YEARS, WATER PLANTS EVERY TWO WEEKS DURING DRY PERIODS, WHICH EXCEED THREE WEEKS WITHOUT A GOOD SOAKING RAIN. SHRUBS MAY REQUIRE 5 TO 10 GALLONS AND TREES 20 TO 30 GALLONS FOR EACH WATERING.
- REMOVE TRUNK WRAP ONE YEAR AFTER PLANTING OR AS RECOMMENDED BY NURSERY.

PRUNING

- REMOVE TREES, LIMBS, AND LIMB STUBS TO THE FOLLOWING WIDTHS AND HEIGHTS SPECIFIED FOR THE INTENDED USE.
- REMOVE DEAD, DISEASED, OR DYING LIMBS.
- DO NOT REMOVE MORE THAN ONE-THIRD OF THE LIVE CROWN OF A TREE IN A YEAR.
- USE BRANCH BARK ROSE AS A REFERENCE FOR THE STARTING POINT AND ANGLE OF CUT.
- USE THE 3 OR 4 CUT PRUNING METHOD ON ALL BRANCHES OVER 2 INCHES IN DIAMETER. FIRST CUT ABOUT ONE-THIRD THE WAY THROUGH THE UNDERSIDE OF THE LIMB (ABOUT 6-12 INCHES FROM THE TREE TRUNK). THEN (APPROXIMATELY AN INCH FURTHER OUT) MAKE A SECOND CUT THROUGH THE LIMB FROM THE UPPER SIDE. WHEN THE BRANCH IS REMOVED, THERE IS NO SPLINTERING OF THE MAIN TREE TRUNK. REMOVE THE STUB. IF THE BRANCH IS LARGER THAN 5-6 INCHES IN DIAMETER, USE THE FOUR CUT SYSTEM. CUTS 1 AND 2 REMOVE THE SAME AND CUT 3 SHOULD BE FROM THE UNDERSIDE OF THE LIMB ON THE OUTSIDE OF THE BRANCH COLLAR. CUT 4 SHOULD BE FROM THE TOP AND IN ALIGNMENT WITH THE 3RD CUT. CUT 3 SHOULD BE 1/4 TO 1/3 THE WAY THROUGH THE LIMB. THIS WILL PREVENT THE BARK FROM PEELING DOWN THE TRUNK. DO NOT PAINT THE CUT SURFACE.

PROTECTING TREES IN HEAVY USE AREAS

- THE COMPACTING OF SOIL OVER THE ROOTS OF TREES AND SHRUBS BY THE TRAMPLING OF CONSTRUCTION EQUIPMENT SHOULD BE AVOIDED. A ZONE OF PROTECTION SHALL BE ESTABLISHED AROUND PLANTED TREES AND SHRUBS AND EXISTING TREES AND SHRUBS THAT ARE TO REMAIN. APPLY AND MAINTAIN A 3 TO 4 INCH LAYER OF UNDECAYED WOOD CHIPS OR 2 INCHES OF NO. 2 WASHED, CRUSHED GRAVEL.

TEMPORARY CRITICAL AREA PLANTING SPECIFICATIONS

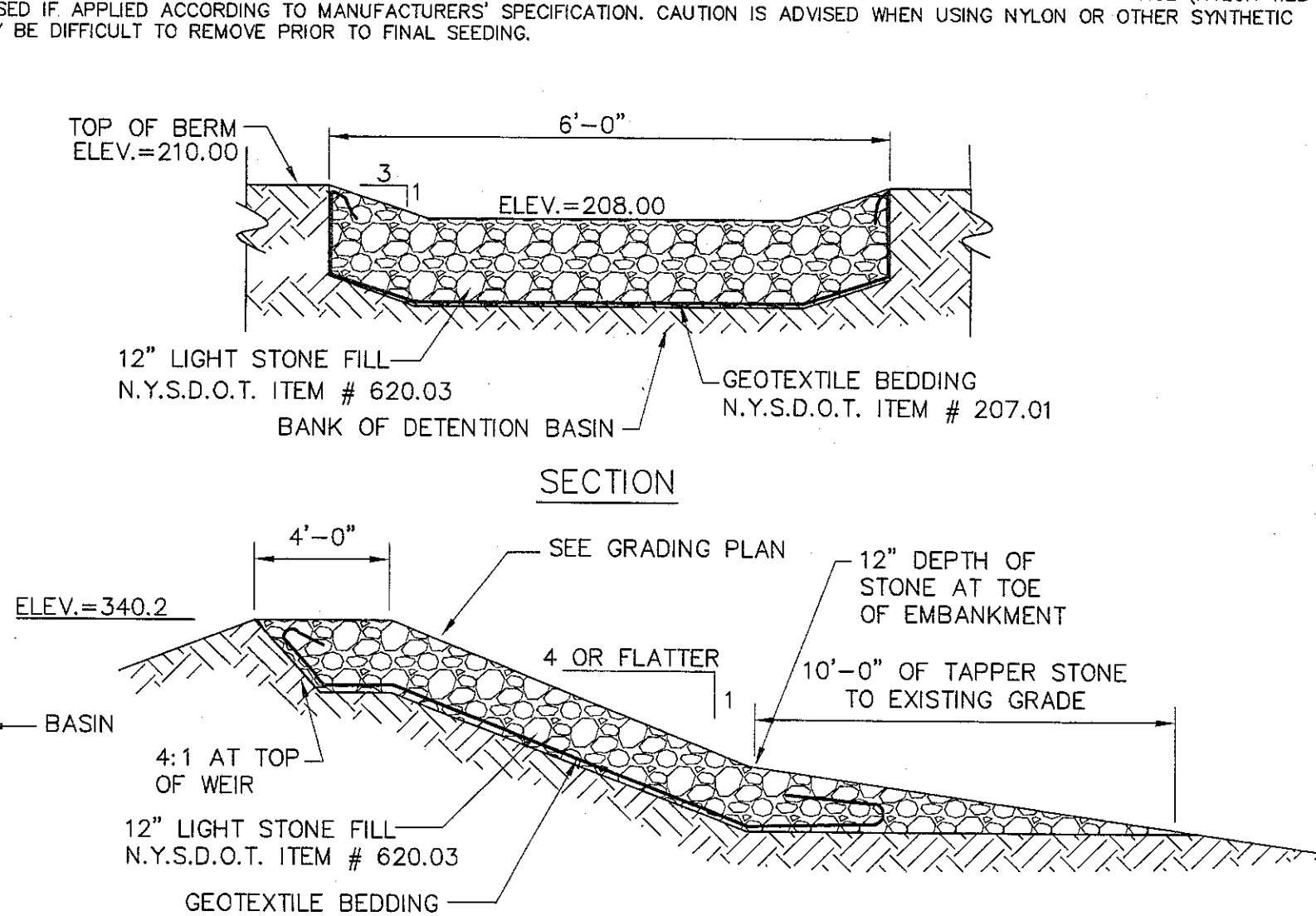
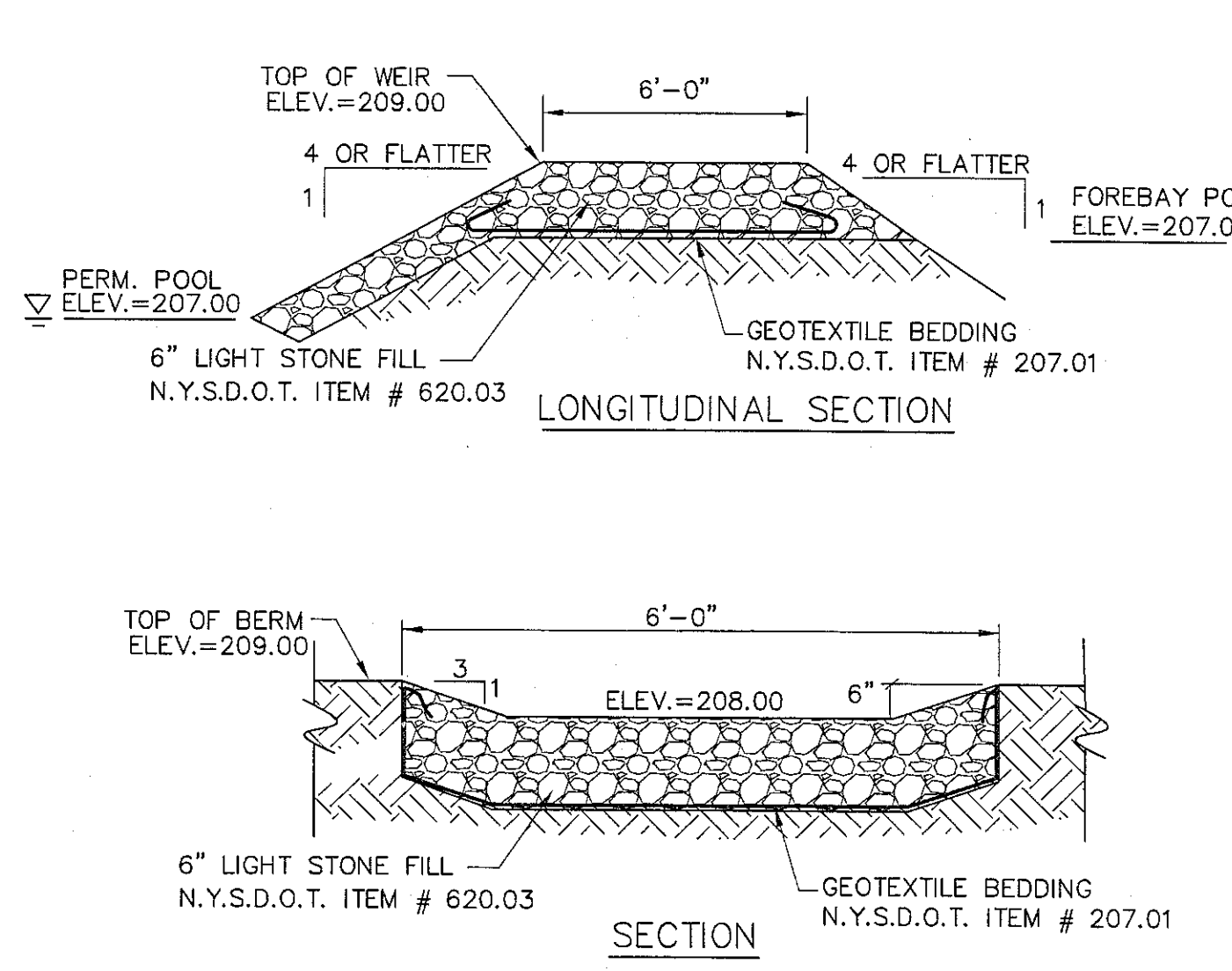
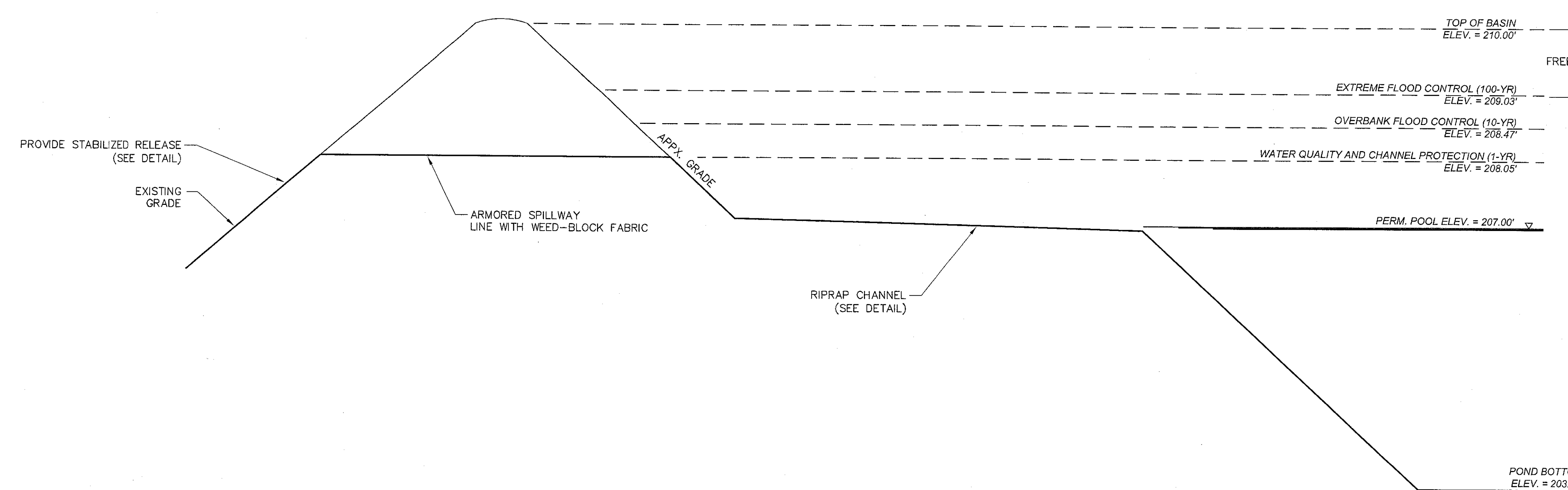
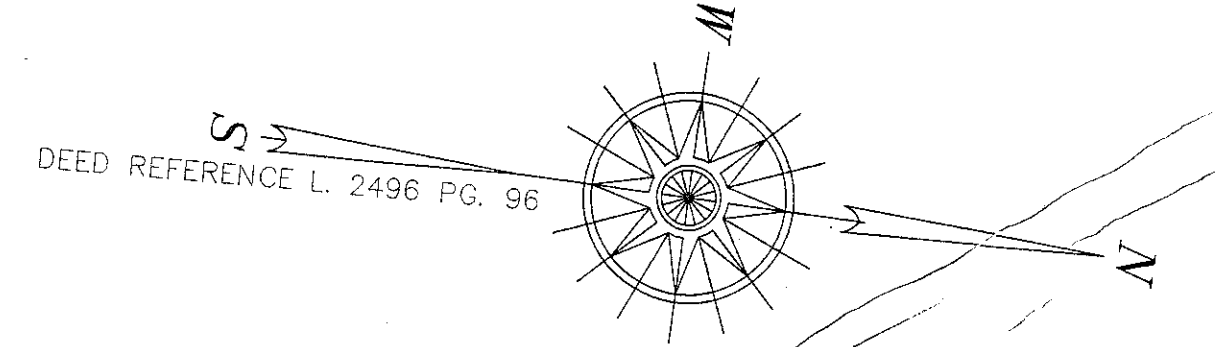
- WATER MANAGEMENT PRACTICES MUST BE INSTALLED AS APPROPRIATE FOR SITE CONDITIONS. THE AREA MUST BE ROUGH GRADED AND SLOPES PHYSICALLY STABLE. LARGE DEBRIS AND ROCKS ARE USUALLY REMOVED. SEEDING MUST BE SEEDED WITHIN 24 HOURS OF DISTURBANCE OR SCARIFICATION OF THE SOIL SURFACE WILL BE NECESSARY PRIOR TO SEEDING.
- FERTILIZER AND LIME ARE NOT TYPICALLY USED FOR TEMPORARY SEEDINGS.
- PLANTING IN SPRING OR SUMMER OR EARLY FALL, THEN SEED THE AREA WITH RYEGRASS (ANNUAL OR PERENNIAL) AT 30 LBS. PER ACRE (APPROXIMATELY 0.7 LB./1000 SQ. FT. OR USE 1 LB./1000 SQ. FT.).
- PLANTING IN LATE FALL OR EARLY WINTER, THEN SEED CERTIFIED 'ARCOOSTOOK' WINTER RYE (CEREAL RYE) AT 100 LBS. PER ACRE (2.5 LBS./1000 SQ. FT.).
- ANY SEEDING METHOD MAY BE USED THAT WILL PROVIDE UNIFORM APPLICATION OF SEED TO THE AREA AND RESULT IN RELATIVELY GOOD SOIL TO SEED CONTACT.
- MULCH THE AREA WITH HAY OR STRAW AT 2 TONS/ACRE (APPROX. 90 LBS./1000 SQ. FT. OR 2 BALES). QUALITY OF HAY OR STRAW MULCH ALLOWABLE WILL BE DETERMINED BASED ON LONG TERM USE AND VISUAL. CONCERNING MULCH ANCHORING WILL BE REQUIRED WHERE WIND OR AREAS OF CONCENTRATED WATER ARE OF CONCERN. WOOD FIBER HYDROGEL OR OTHER SPRINKABLE PRODUCTS APPROVED FOR EROSION CONTROL (ONION MESH OR MESH) MAY BE USED IF APPLIED ACCORDING TO MANUFACTURER'S SPECIFICATION. CAUTION IS ADVISED WHEN USING NYLON OR OTHER SYNTHETIC PRODUCTS. THEY MAY BE DIFFICULT TO REMOVE PRIOR TO FINAL SEEDING.

ANTI-SEEP COLLAR DESIGN

DESIGN IN ACCORDANCE WITH NYSDEC, "STANDARDS AND SPECIFICATIONS FOR EROSION AND SEDIMENT CONTROL."

BASIN	DIM. (ft)	EMB. SLOPE (ft/ft)	PIPE SLOPE (ft/ft)	PIPE DIA. (in)	SATURATION LENGTH (ft)	COLLAR SIZE (in)	QUANTITY
K	N/A	N/A	N/A	N/A	N/A	N/A	N/A

COLLARS TO BE "AGRI-DRAIN ANTI-SEEP COLLARS" OR APPROVED EQUAL.
COLLAR INSTALLATION SPACING TO BE DIVIDED EQUALLY ACROSS SATURATED LENGTH L_s AS SHOWN IN THIS TABLE. SATURATION LENGTH BEGINS AT BASIN OUTLET STRUCTURE.



NEW YORK STATE DEPARTMENT OF ENVIRONMENTAL CONSERVATION

NEW YORK STATE DEPARTMENT OF HEALTH

TOWN OF BETHLEHEM BOARD
ALBANY COUNTY, NEW YORK
This Plan Approved
Title: Chairman
Date: 9/2/09
SPA 165 A 1

ALBANY COUNTY HEALTH DEPARTMENT

REVISIONS

Down Checked Approved

Project No. 054081
Date: Sept. 2009

SWM-1
Phase 1

Sheet No. 14