

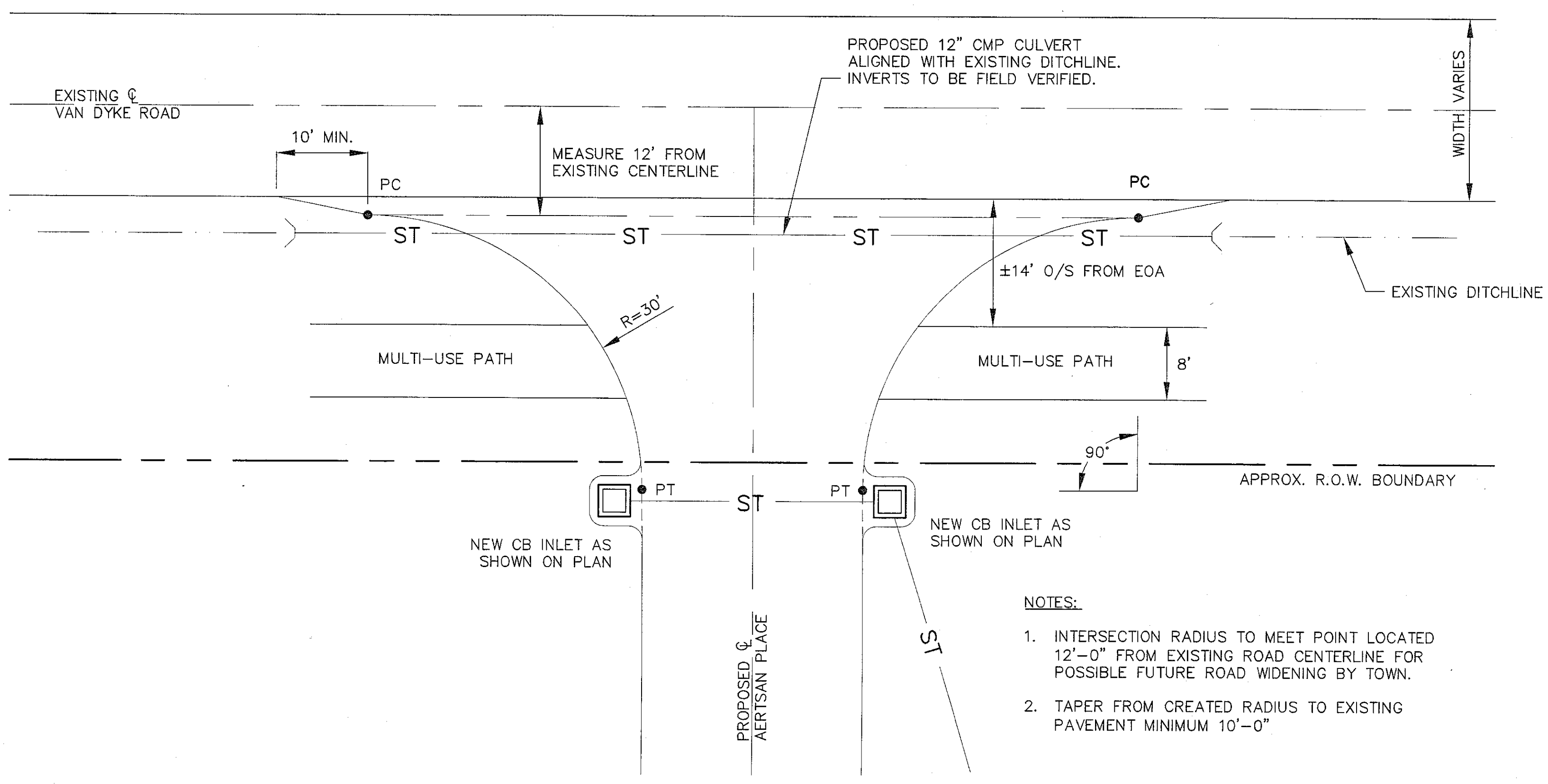
Stantec
 3 Columbia Circle Suite 8
 Albany, NY U.S.A.
 12203
 Tel: 518.452.4356
 Fax: 518.452.9234
 www.stantec.com

The Contractor shall verify and be responsible for all dimensions. DO NOT make the drawing - any errors or omissions and be reported to Stantec without delay. The Contractor shall be responsible for all design and drawings and shall be responsible for the reproduction of the drawings for use for any purpose other than that authorized by Stantec in the future.

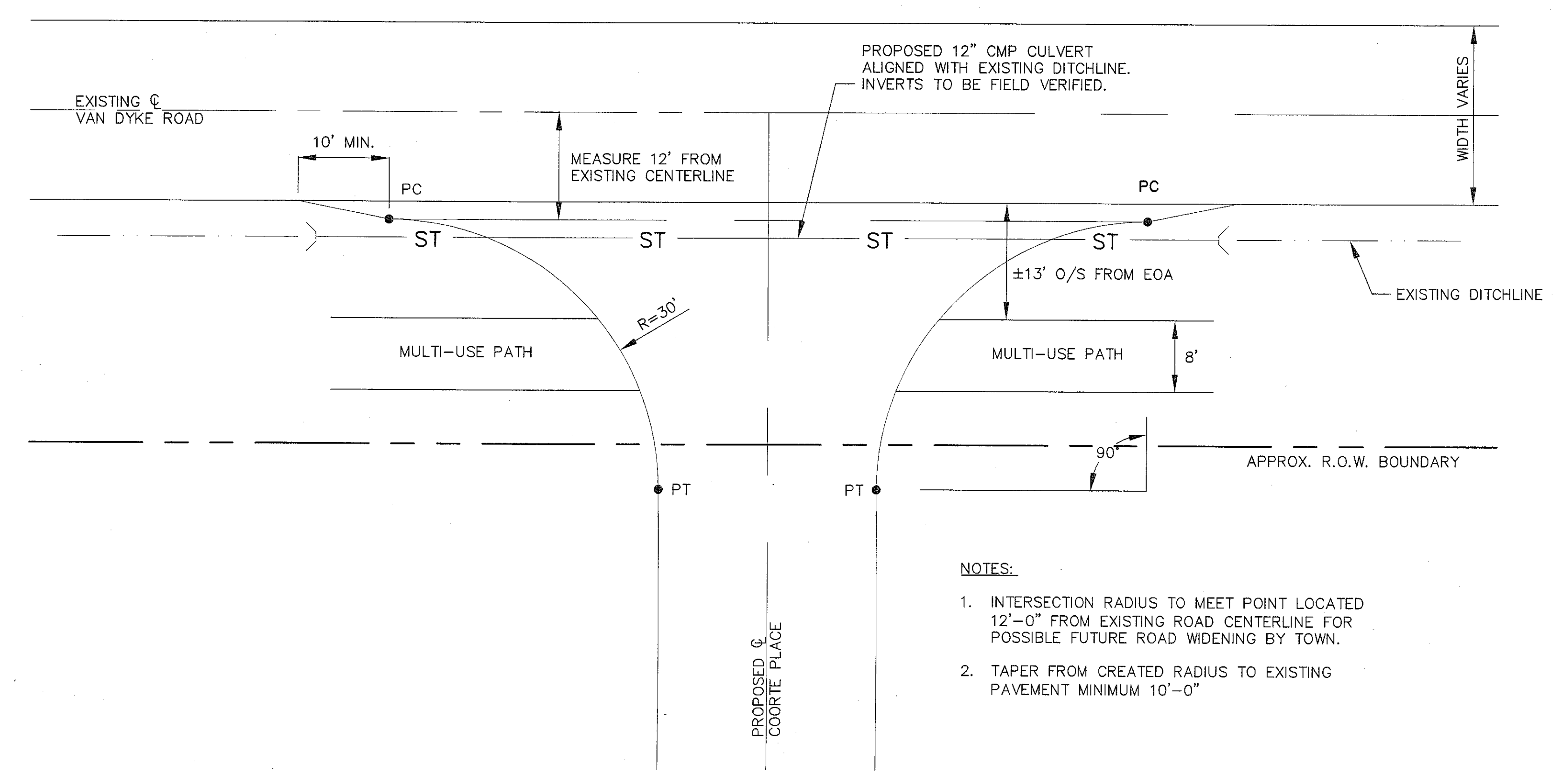
Unauthorized alteration or reproduction of this drawing is prohibited. The Contractor shall be responsible for the reproduction of the drawings for use for any purpose other than that authorized by Stantec in the future.

Only copies from the original drawing shall be used for construction. The Contractor shall be responsible for the reproduction of the drawings for use for any purpose other than that authorized by Stantec in the future.

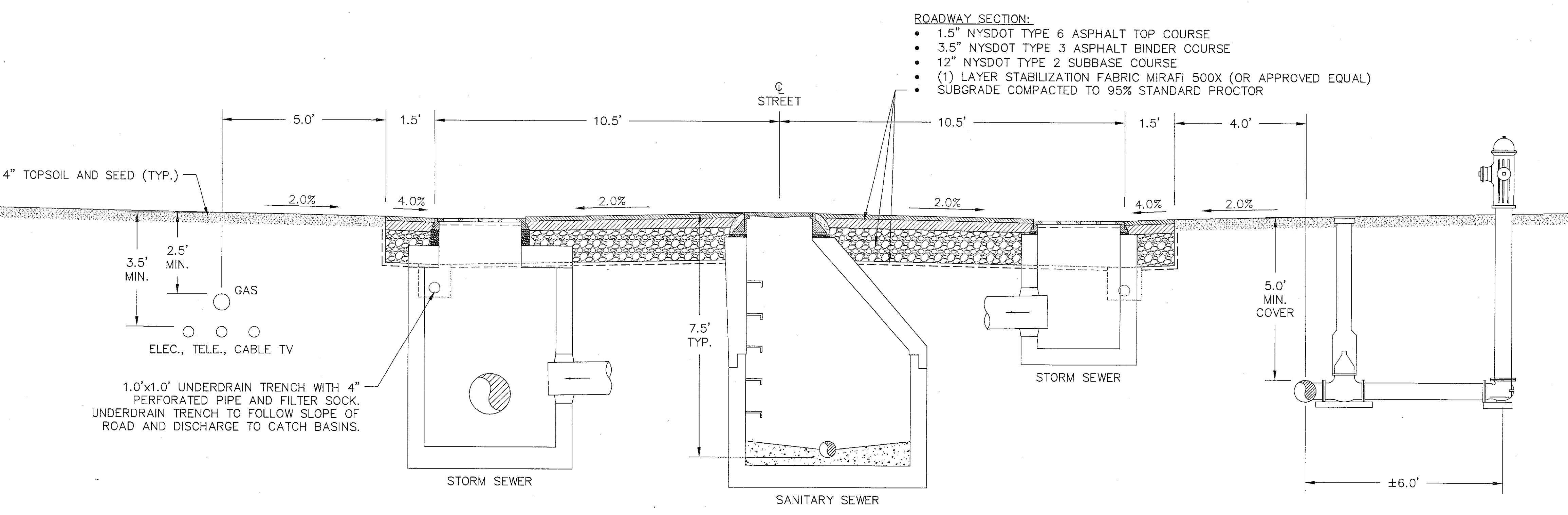
CONSTRUCTION DETAILS
 VAN DYKE SPINNEY
 AT DELMAR, NEW YORK
 VAN DYKE ROAD
 TOWN OF BETHLEHEM, COUNTY OF ALBANY - STATE OF NEW YORK



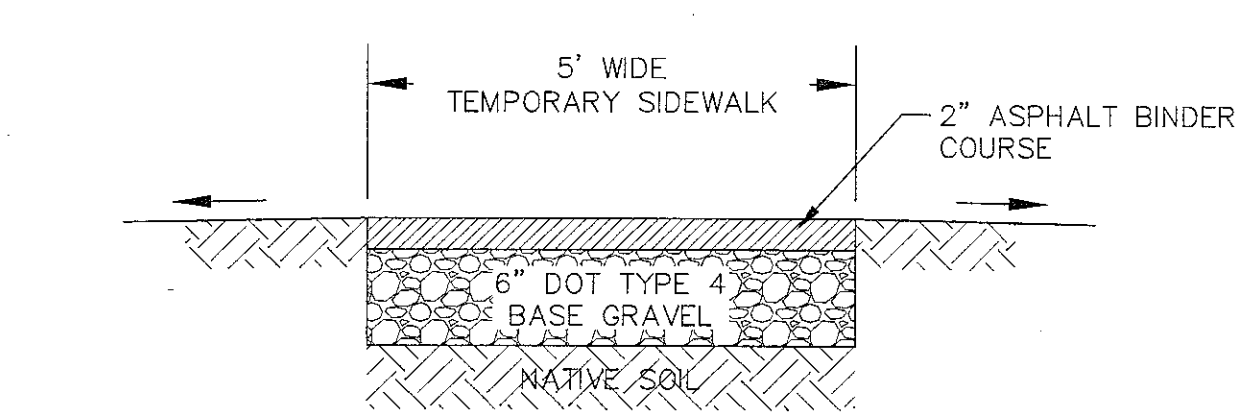
1 STANDARD INTERSECTION DETAIL
 AERTSAN PLACE AND VAN DYKE ROAD



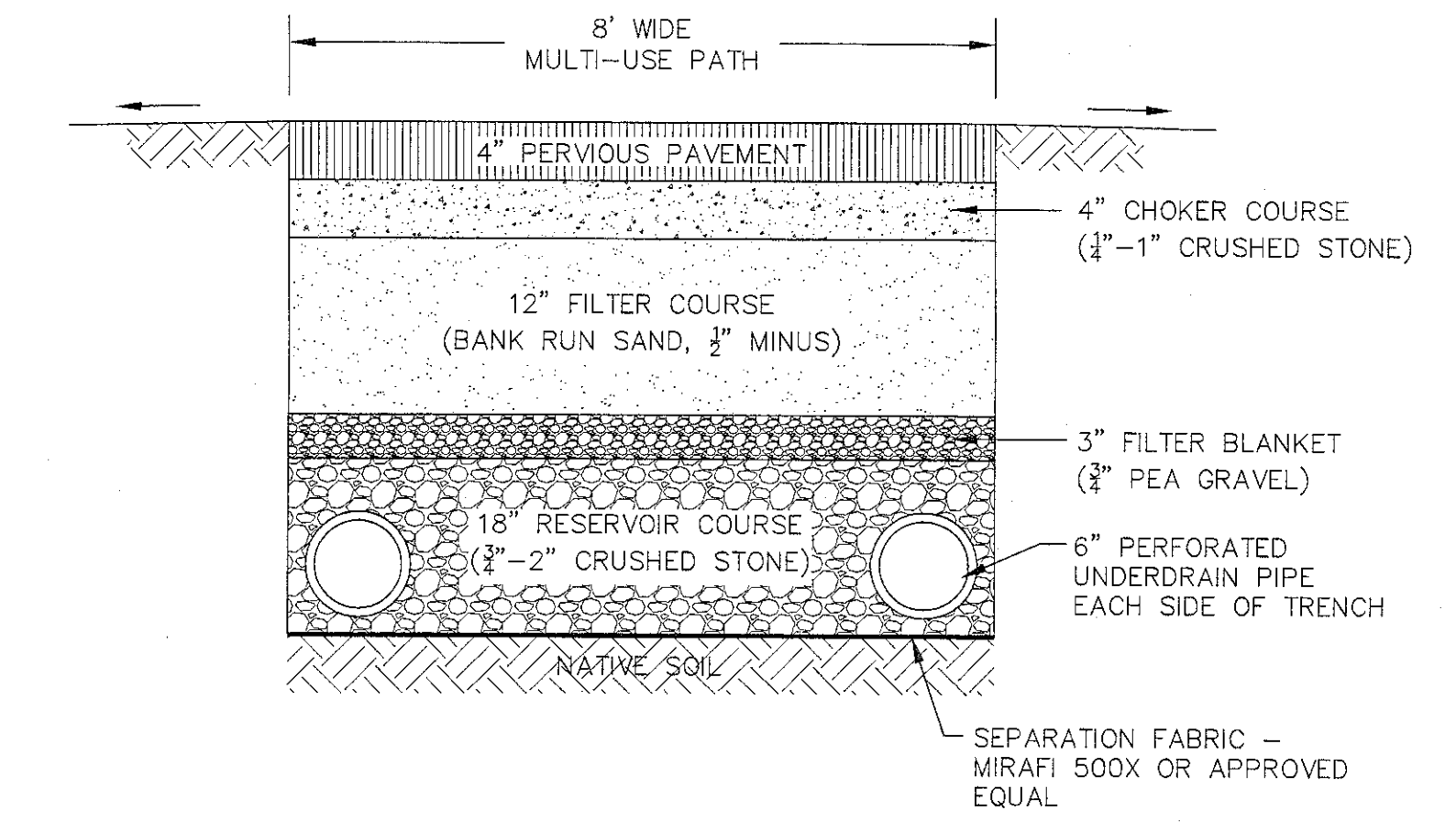
2 STANDARD INTERSECTION DETAIL
 COORTE PLACE AND VAN DYKE ROAD



3 TYPICAL SECTION

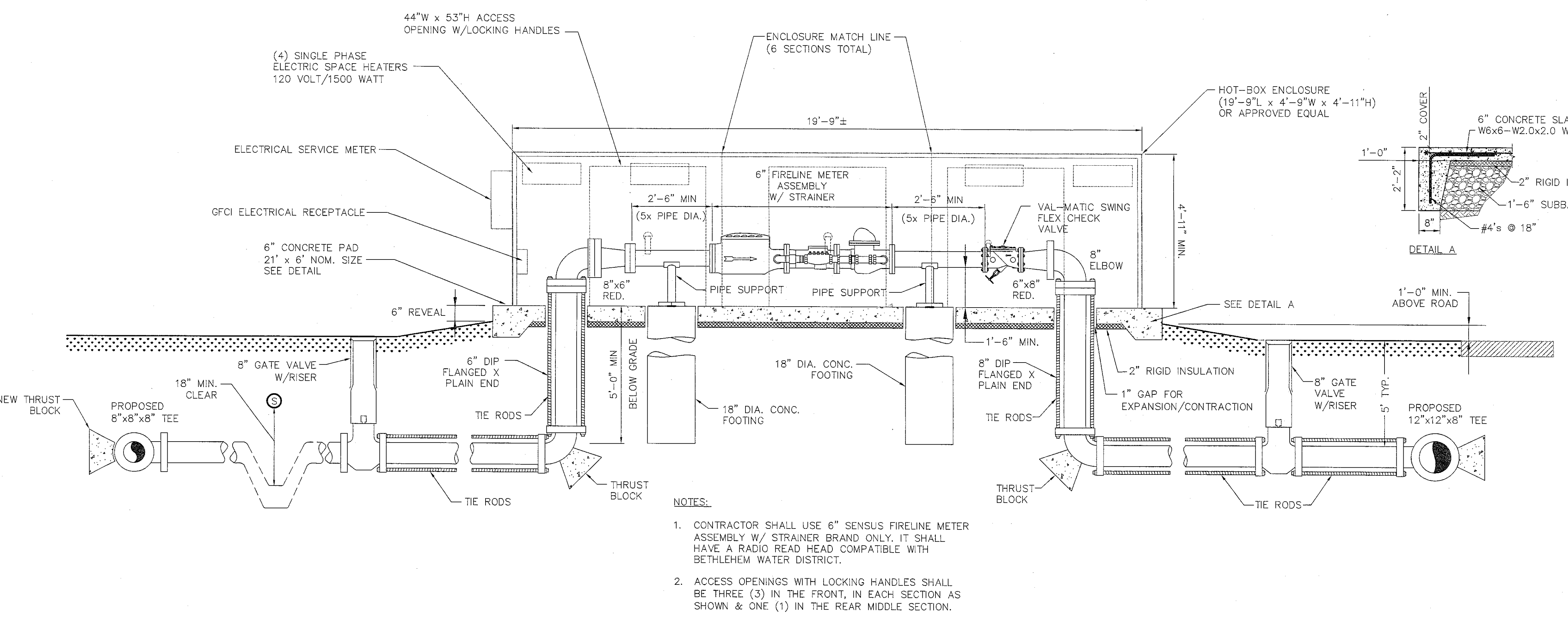


4 TEMPORARY SIDEWALK CROSS SECTION
 (PHASE 1)

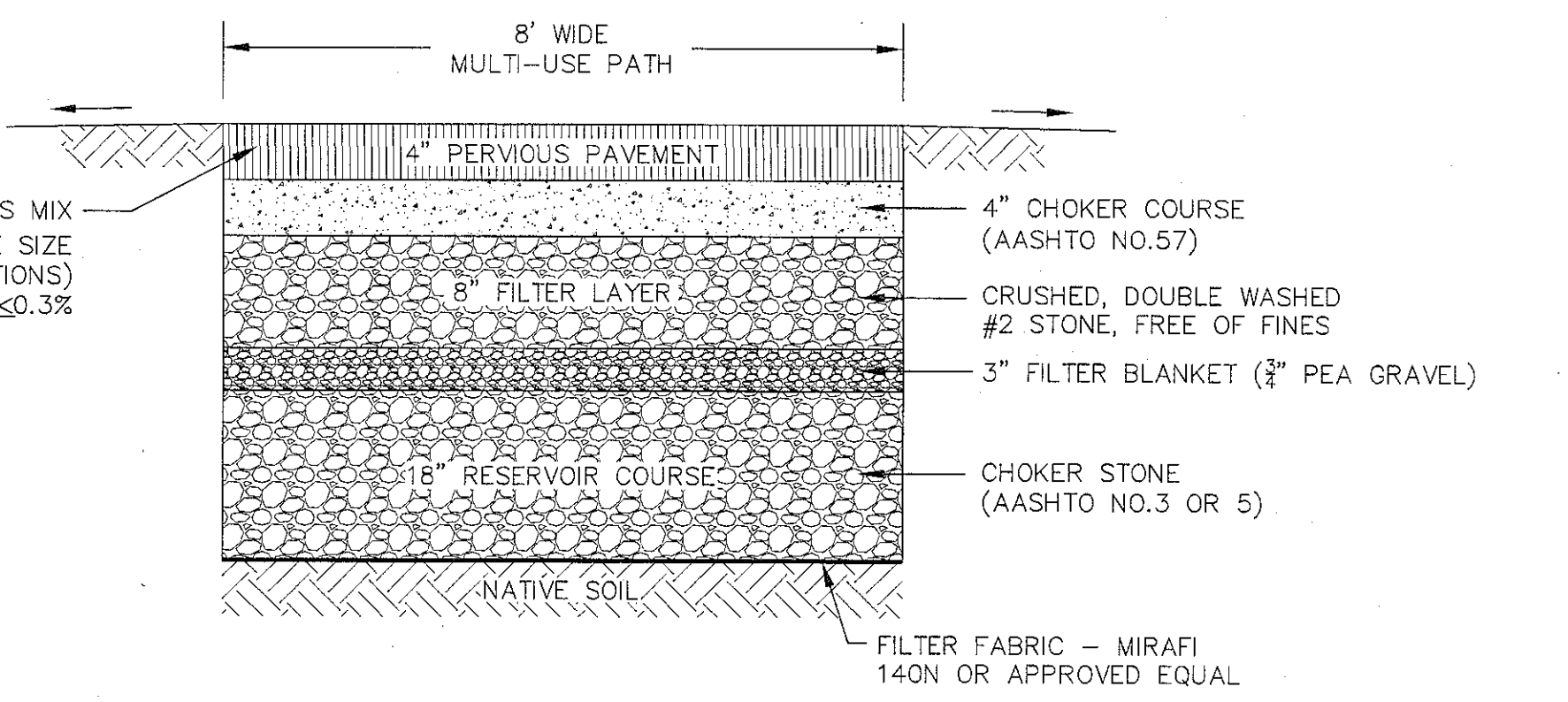


NOTE:
 1. CONTRACTOR SHALL COORDINATE WITH DESIGN ENGINEER TO PERFORM SOIL MATERIAL ANALYSIS AND PERC TESTING IN ACCORDANCE WITH NYSDEC STANDARDS PRIOR TO CONSTRUCTION OF MULTI-USE PATH.
 2. FOLLOWING SOILS TESTING AND PRIOR TO THE START OF CONSTRUCTION, CONTRACTOR SHALL COORDINATE WITH DESIGN ENGINEER REGARDING UNDERDRAIN PIPE SLOPES AND DISCHARGE LOCATIONS.
 3. MATERIALS AND CROSS-SECTION DESIGN DERIVED FROM "UNHS" DESIGN SPECIFICATIONS FOR POROUS ASPHALT PAVEMENT AND INFILTRATION BEDS". MATERIALS USED IN CONSTRUCTION SHALL CLOSELY CONFORM WITH THOSE SPECIFIED WITHIN THE "UNHS" DESIGN MANUAL.

5 ALTERNATE PERMANENT MULTI-USE PATH CROSS SECTION
 (FUTURE PHASES)

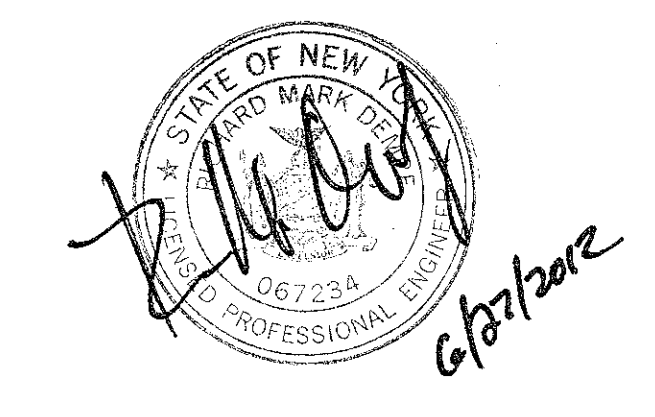
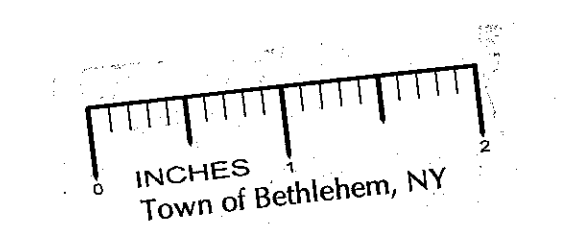


6 WATER MASTER METER ASSEMBLY



NOTE:
 1. CONTRACTOR SHALL COORDINATE WITH DESIGN ENGINEER TO PERFORM SOIL MATERIAL ANALYSIS AND PERC TESTING IN ACCORDANCE WITH NYSDEC STANDARDS PRIOR TO CONSTRUCTION OF MULTI-USE PATH.
 2. MATERIALS AND CROSS-SECTION DESIGN SHOWN AS SPECIFIED IN THE NYSDEC STORMWATER MANAGEMENT DESIGN MANUAL.

6 PREFERRED PERMANENT MULTI-USE PATH CROSS SECTION
 (FUTURE PHASES)



NEW YORK STATE DEPARTMENT OF ENVIRONMENTAL CONSERVATION	NEW YORK STATE DEPARTMENT OF HEALTH	TOWN OF BETHLEHEM PLANNING BOARD TOWN OF BETHLEHEM ALBANY COUNTY, NEW YORK This Site Plan Approved. Date 07/23/12 SPA-165-AH	ALBANY COUNTY HEALTH DEPARTMENT ALBANY COUNTY DEPARTMENT OF HEALTH DIVISION OF ENVIRONMENTAL HEALTH SERVICES By direction of the Commissioner of Health, these plans are hereby approved. See final sheet for title and signature.
---------------------------------------------------------	-------------------------------------	------------------------------------------------------------------------------------------------------------------------------------------------	---------------------------------------------------------------------------------------------------------------------------------------------------------------------------------------------------------------------------------------------

REVISIONS	DATE	REMARKS
REVISED PER LAND CONSERVATION MEETING	9/24/10	
REVISED PER TOWN REVIEW COMMENTS	5/2/10	
REVISED LANDSCAPING AND LAYOUT	4/29/10	
PLANNING BOARD SUBMISSION	2/23/10	
REVISED PER TOWN REVIEW COMMENTS - RESUBMIT TO PLANNING BOARD	2/26/10	
TOWN OF BETHLEHEM - PLANNING BOARD SUBMISSION	10/20/09	
REVISED PER LAND CONSERVATION MEETING	9/25/09	
REVISED PER BARTON AND LOUGHRAN COMMENTS	8/25/09	

Drawn: KJM
 Checked: Approved
 Project No: 054081
 Date: Sept. 2009
 Title: DT-1
 Sheet No: 19