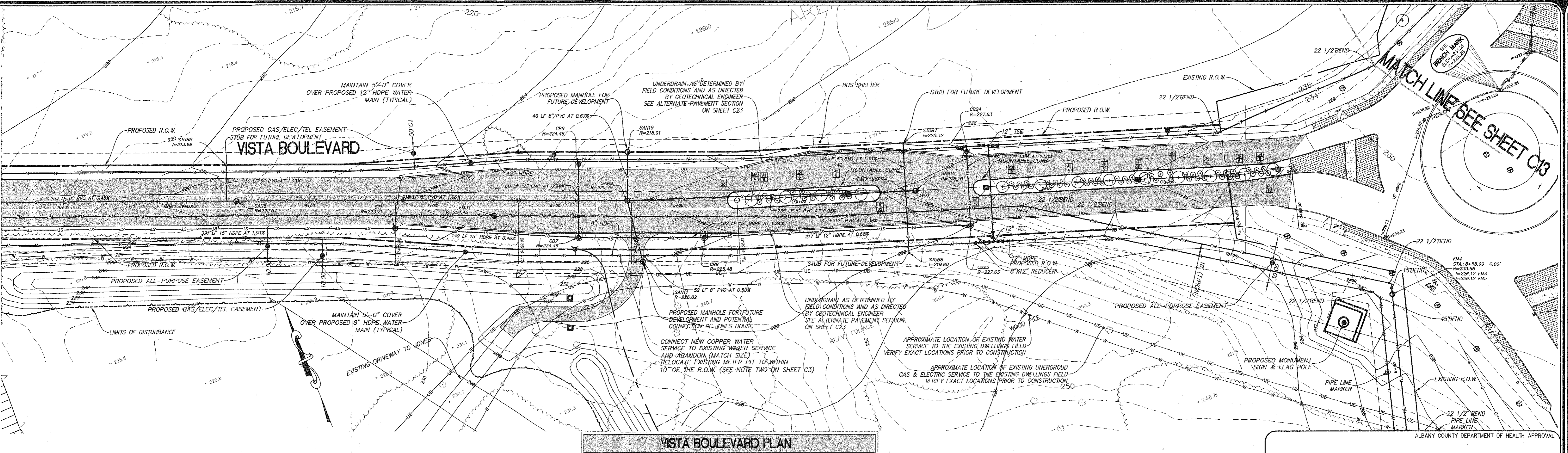


MATCH LINE SEE SHEET C4

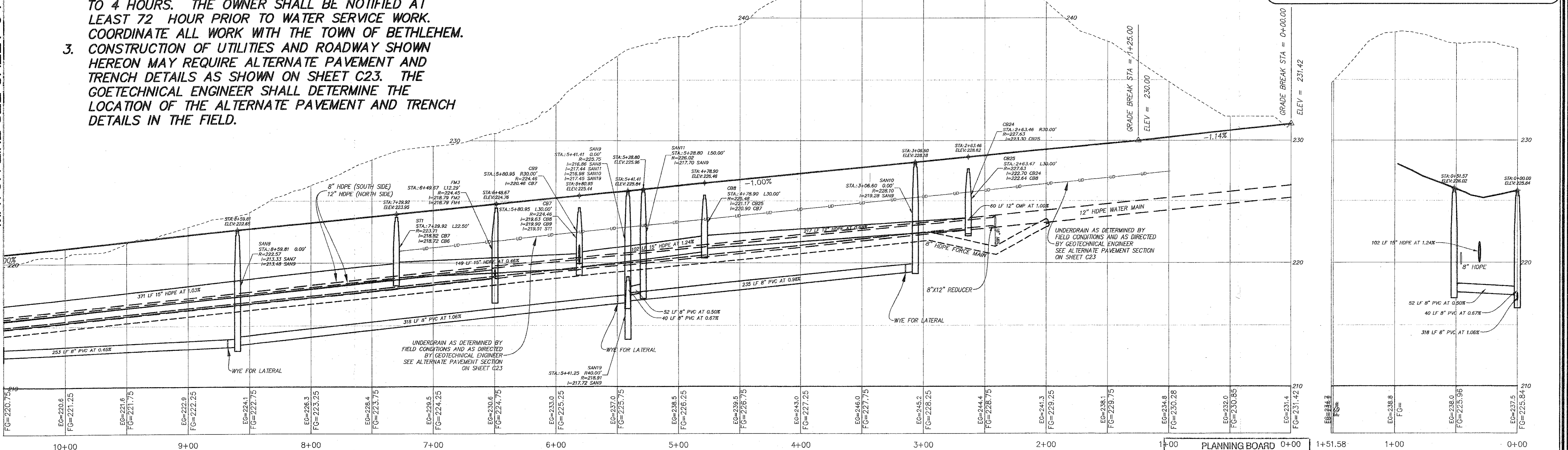
MATCH LINE SEE SHEET C4



VISTA BOULEVARD PLAN

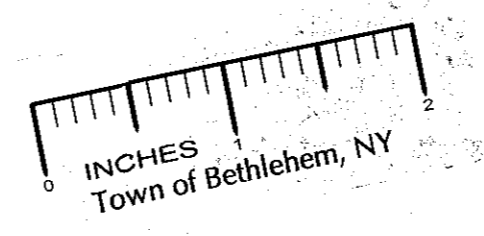
NOTE:

1. CONTRACTOR SHALL INSTALL BENDS ALONG WATER MAINS AND FORCE MAINS NECESSARY TO MAINTAIN LOCATION OF UTILITY AS SHOWN ON THE PLAN.
2. THE TIME FRAME FOR POTENTIAL WATER SERVICE INTERRUPTION TO THE JONES HOUSE SHALL BE LIMITED TO 4 HOURS. THE OWNER SHALL BE NOTIFIED AT LEAST 72 HOUR PRIOR TO WATER SERVICE WORK. COORDINATE ALL WORK WITH THE TOWN OF BETHLEHEM.
3. CONSTRUCTION OF UTILITIES AND ROADWAY SHOWN HEREON MAY REQUIRE ALTERNATE PAVEMENT AND TRENCH DETAILS AS SHOWN ON SHEET C23. THE GEOTECHNICAL ENGINEER SHALL DETERMINE THE LOCATION OF THE ALTERNATE PAVEMENT AND TRENCH DETAILS IN THE FIELD.



VISTA BOULEVARD PROFILE

SEWER TO JONES HOUSE PROFILE



PLANNING BOARD 0+00
TOWN OF BETHLEHEM
ALBANY COUNTY, NEW YORK

This Site Plan Approved by
George J. Jurek
Title: CHAIRMAN
Date: 8/22/2011 SP/ALB

ALBANY COUNTY DEPARTMENT OF HEALTH
DIVISION OF ENVIRONMENTAL HEALTH SERVICES

By direction of the Commissioner of Health, these plans are hereby approved. See first sheet for date and signature.

HERSHBERG & HERSHBERG
Consulting Engineers and Land Surveyors
18 Locust Street
Albany, New York 12203

ALTERATION OF THIS DOCUMENT EXCEPT BY A LICENSED PROFESSIONAL ENGINEER OR LAND SURVEYOR, IS ILLEGAL.



DATE	REMARKS
11/26/08	GENERAL
3/30/09	TOWN COMMENTS SUBMISSION
6/8/09	TOWN COMMENTS RE-SUBMISSION
10/20/09	TOWN COMMENTS RE-SUBMISSION
2/8/10	TOWN COMMENTS RE-SUBMISSION
3/14/11	ADDDH

PROPOSED INFRASTRUCTURE - PHASE 1A
VISTA TECHNOLOGY CAMPUS
TOWN OF BETHLEHEM
ALBANY COUNTY, STATE OF NEW YORK

RECEIVED
AUG 12 2011
Town of Bethlehem
Planning Board

SCALE: 1"=40' (V.I.S.)
DATE: 7/31/08
CHK: DRH
BY: WM
FILE: 070145

