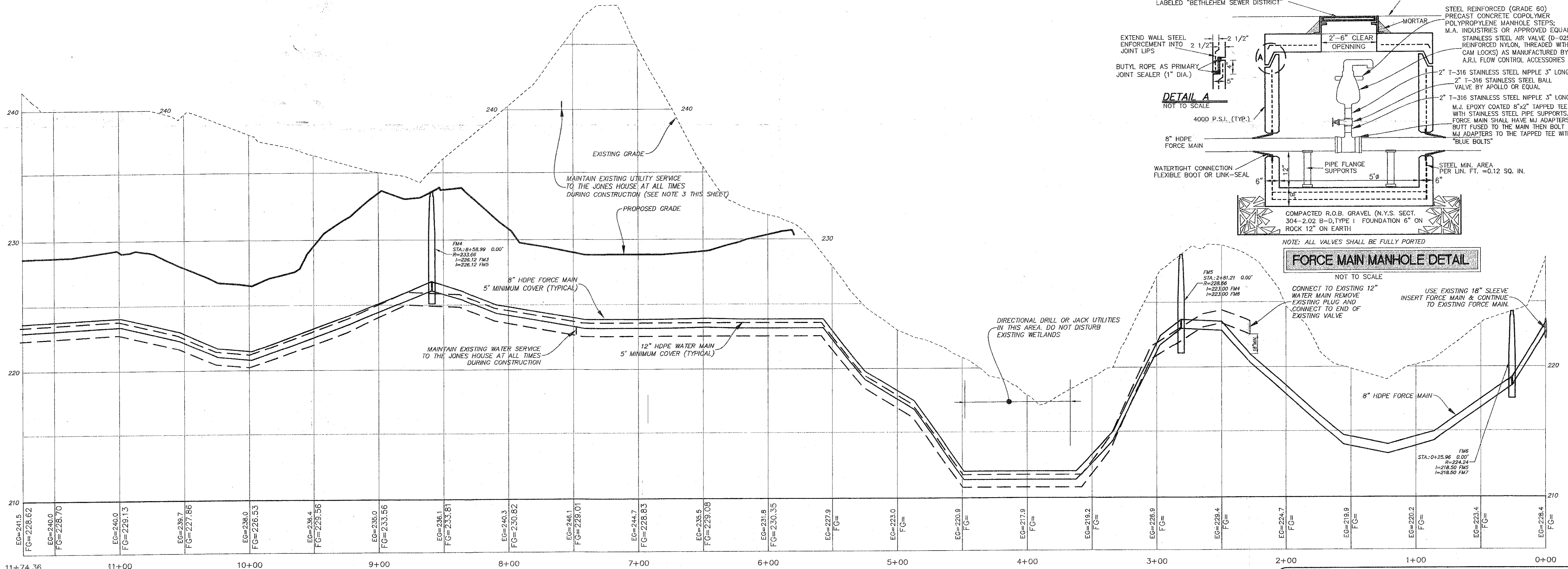


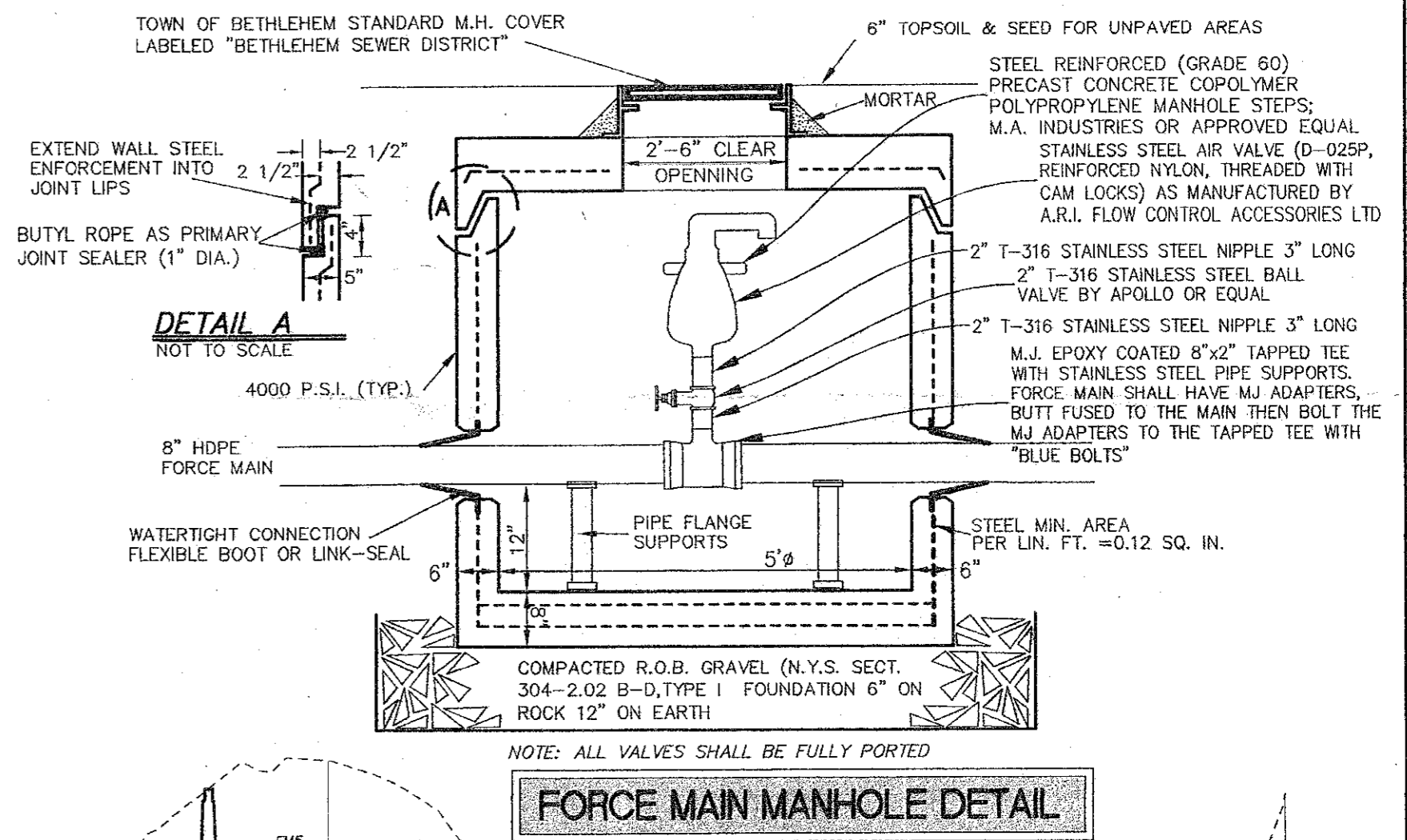
SEE SHEET C3 FOR CONTINUATION

FORCE MAIN PLAN



FORCE MAIN PROFILE

- NOTE:**
- INSTALL PIPE LINE MARKERS IN ACCORDANCE WITH TOWN'S STANDARD SPECIFICATION FOR THE WATER MAIN AND FORCE MAIN SHOWN HEREON.
 - CONTRACTOR SHALL INSTALL BENDS ALONG WATER MAINS AND FORCE MAINS NECESSARY TO MAINTAIN LOCATION OF UTILITY AS SHOWN ON THE PLAN.
 - THE TIME FRAME FOR POTENTIAL WATER SERVICE INTERRUPTION TO THE JONES HOUSE SHALL BE LIMITED TO 4 HOURS. THE OWNER SHALL BE NOTIFIED AT LEAST 72 HOUR PRIOR TO WATER SERVICE WORK. COORDINATE ALL WORK WITH THE TOWN OF BETHLEHEM.



FORCE MAIN MANHOLE DETAIL

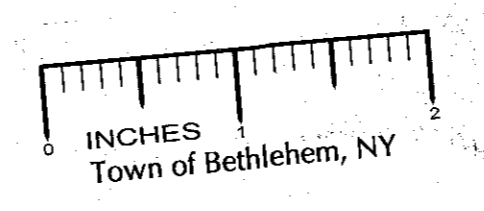
PLANNING BOARD
TOWN OF BETHLEHEM
ALBANY COUNTY, NEW YORK

This Site Plan Approved by
George J. Jones
Title CHAIRMAN
Date 8/22/2011 STA-169

ALBANY COUNTY DEPARTMENT OF HEALTH APPROVAL

ALBANY COUNTY DEPARTMENT OF HEALTH
DIVISION OF ENVIRONMENTAL HEALTH SERVICES

By direction of the Commissioner of Health, these plans are hereby approved. See first sheet for date and signature.



HERSHBERG & HERSHBERG
Consulting Engineers and Land Surveyors
18 Locust Street
Albany, New York 12203

ALTERATION OF THIS DOCUMENT EXCEPT BY A LICENSED PROFESSIONAL ENGINEER OR LAND SURVEYOR, IS ILLEGAL.



DATE	REMARKS
3/20/09	TOWN COMMENTS SUBMISSION
6/7/09	TOWN COMMENTS RE-SUBMISSION
8/19/09	TOWN COMMENTS RE-SUBMISSION
2/9/10	TOWN COMMENTS RE-SUBMISSION
5/5/10	TOWN COMMENTS RE-SUBMISSION
3/14/11	ACD/CB

REVISIONS

PROPOSED INFRASTRUCTURE - PHASE 1A
VISTA TECHNOLOGY CAMPUS
TOWN OF BETHLEHEM
ALBANY COUNTY, STATE OF NEW YORK

SCALE: H1=40' V1=1' (BT, WK)
CHK: DRH
DATE: 7/31/08
070145-Phase1A.dwg

RECEIVED
AUG 12 2011
Town of Bethlehem
Planning Board

