

HERSHBERG & HERSHBERG
Consulting Engineers
and Land Surveyors

18 Locust Street
Albany, New York 12203

ALTERATION OF THIS DOCUMENT EXCEPT BY A LICENSED PROFESSIONAL ENGINEER OR LAND SURVEYOR, IS ILLEGAL.

DATE	REVISIONS
4/14/11	TOWN STANDARDS
5/11/11	GAS & ELEC

PUBLIC INFRASTRUCTURE CONSTRUCTION
VISTA TECHNOLOGY CAMPUS
TOWN OF BETHLEHEM
ALBANY COUNTY, STATE OF NEW YORK

FILE: 110027
SCALE: AS NOTED
DATE: 2/18/11
GJKL DRH
BY: WJ
110027-1.dwg

GENERAL NOTES:

- CONTRACTOR SHALL FIELD VERIFY ALL UTILITIES.
- CONTRACTOR SHALL TEMPORARILY BY-PASS PUMP EXISTING SEWER AS REQUIRED.
- CONTRACTOR SHALL INSTALL TEMPORARY FENCING AROUND THE SITE AS REQUIRED.
- CONTRACTOR SHALL INSTALL SILT FENCES AND CHECKDAMS AS REQUIRED.
- CONTRACTOR SHALL PROTECT ALL STORMWATER FACILITIES. CONTRACTOR SHALL RESTORE AND REPLACE ALL FACILITIES AFFECTED BY CONSTRUCTION ACTIVITIES AT NO COST TO THE TOWN.
- ALL ALUMINUM SLIDE GATES SHALL BE A MINIMUM OF 12". ALUMINUM SLIDE GATES THAT ARE 16" AND GREATER SHALL BE DOUBLE SLIDE GATES.

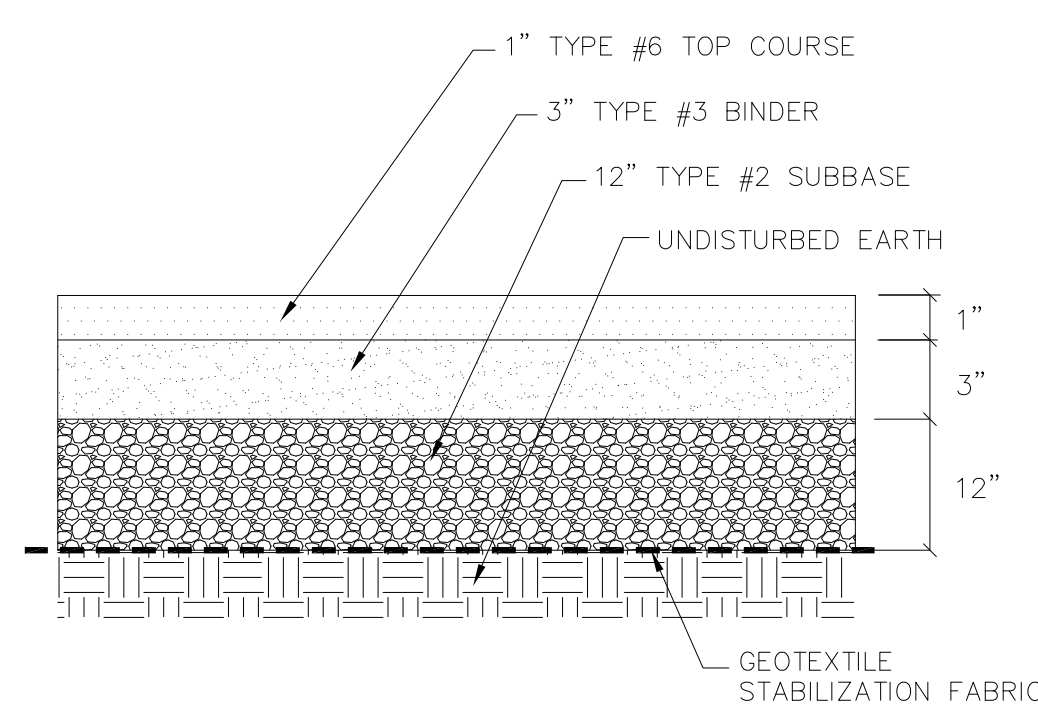
PUMP INFORMATION

- PUMPS CONTROLS & PANEL AS MANUFACTURED BY ITT FLYGT CORPORATION
- TYPE: NON-CLOG PUMPS MODEL NO.: NP3171.091 RATING: 492 GPM @ 125' TDH
- MOTOR: 34 HP, 1755 RPM ELEC. 3 PH, 60 HZ 460 V
- CONTROL PANEL SHALL BE EQUIPPED WITH FUTURE CONNECTION OF COMMUNICATIONS AND FLOW METER (FLYGT APP721 CONTROLLER)
- GENERATOR SHALL BE 60KW 277/480 VOLT 3 PH 4 WIRE CATIPULAR DIESEL GENERATOR WITH SOUND INSULATED ENCLOSURE.
- SUPPLY ONE FLYGT FLUSH VALVE

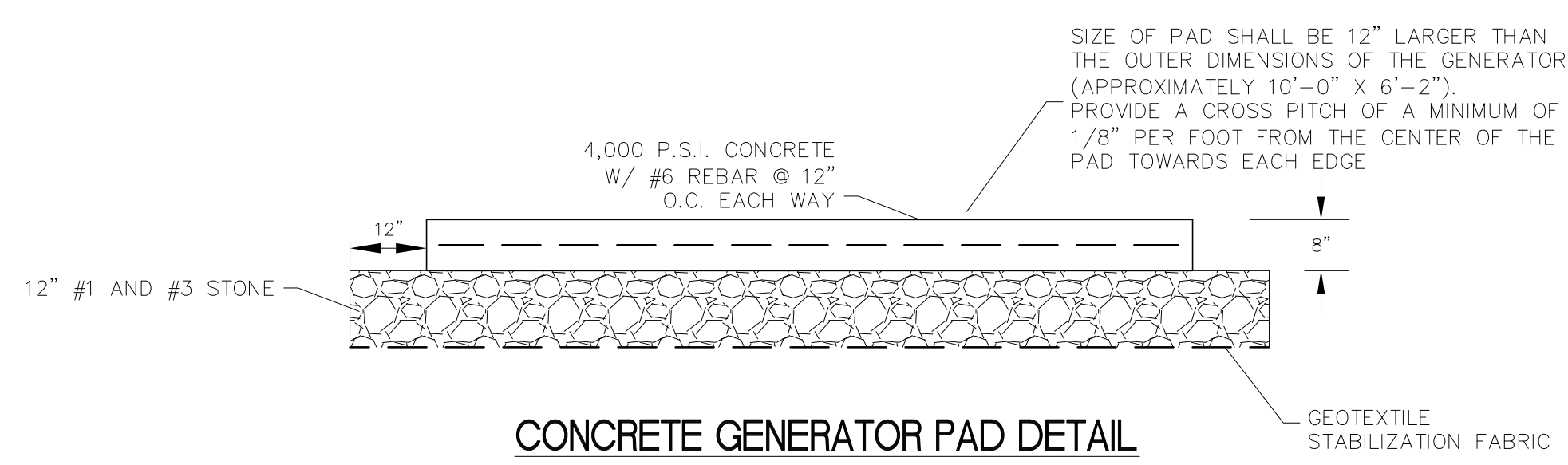
CONFINED SPACE ACCESS NOTE:
BOTH WETWELL AND VALVE PIT ARE POTENTIALLY HAZARDOUS AND ARE CONFINED SPACE. ENTRY REQUIRES TRAINED AND AUTHORIZED PERSONNEL COMPLYING WITH ALL SAFETY REQUIREMENTS. IF DRAIN VALVE FROM VALVE PIT IS LEFT OPEN VAPORS COULD BE WITHIN VALVE PIT.

NOTES

- FINAL CONNECTIONS WILL REQUIRE SHUT DOWN AND DRAINING OF THE EXISTING FORCE MAIN. THE CONTRACTOR SHALL WORK AROUND THE CLOCK, 24 HOURS A DAY, AS REQUIRED DURING THE SHUT DOWN UNTIL WORK IS COMPLETED.
- USE RESTRAINED JOINT PIPE AND FITTINGS FOR ALL NEW FORCE MAINS OR MECHANICAL JOINT FITTINGS WITH RETAINER GLANDS.
- INTEGRAL PUMP ENCLOSURE AND VALVE PIT SHALL BE SIZED TO ACCOMMODATE EQUIPMENT AND APPURTENANCES SHOWN. COORDINATE AND VERIFY ALL ELECTRICAL EQUIPMENT, PUMPS, VALVES, PUMP RETRIEVAL SYSTEM, CONTROLS AND FITTINGS WILL BE ACCOMMODATED WITHIN THE ENCLOSURE.
- PORTABLE VENTILATION EQUIPMENT SHALL BE PROVIDED BY MAINTENANCE PERSONNEL SHOULD ENTRANCE TO WET WELL BE REQUIRED.
- ELECTRICAL EQUIPMENT IN WET WELL SHALL COMPLY WITH THE NATIONAL ELECTRIC CODE REQUIREMENTS FOR CLASS 1 GROUP D, DIVISION 1 LOCATIONS AND BE SUITABLE FOR USE UNDER CORROSIVE CONDITIONS. EACH FLEXIBLE CABLE SHALL BE PROVIDED WITH A WATER TIGHT SEAL AND SEPARATE STRAIN RELIEF. A FUSED DISCONNECT SWITCH LOCATED ABOVE GROUND SHALL BE PROVIDED FOR THE MAIN POWER FEED.
- THE PUMP STATION LIES OUTSIDE THE LIMITS OF THE 100 YEAR FLOOD ELEVATION.
- PROVIDE LOCKING DEVICES ON ALL ACCESS HATCHES.
- CONCRETE TO BE 5,000 P.S.I. AFTER 28 DAYS
- REINFORCED FOR HEAVY DUTY HS20 LOADING
- JOINTS TO BE SEALED WITH CONSEAL CS104 JOINT SEALANT
- ALL PIPING TO BE EXTERIOR SURFACE PAINTED. WETWELL STRUCTURE SHALL BE COATED INSIDE AND OUT WITH A BITUMINOUS COATING SYSTEM No. 7037 BY PASSONOR CORPORATION OR APPROVED EQUAL.
- PUMPS: EACH PUMP NP3171.091 MODEL 34 HP WITH ONE AUTO FLUSHING VALVE, 460 V, 3 PH
- CONTROL PANEL: FLYGHT
- ACCESS HATCHES: FLYGHT
- RW GATE VALVES: CLOW OR EQUAL
- CHECK VALVES: FLYGHT HDL
- CONTRACTOR TO VERIFY SIZE, LOCATION AND ELEVATION OF ALL PIPE OPENINGS
- STRUCTURES TO BE SET ON WELL COMPACTED MATERIAL
- ALL WET WELL AND VALVE CHAMBER HARDWARE, PIPE SUPPORTS, ETC. SHALL BE T316 SS (STAINLESS STEEL)
- PRIOR TO INSTALLATION OF ANY PIPING WITHIN THE WETWELL FILL WET WELL 50% WITH WATER AND LET STAND 24 HOURS TO REDUCE SETTLEMENT EFFECTS
- PUMP STATION MUST BE EQUIPPED WITH SCADA (SUPERVISORY CONTROL AND DATA ACQUISITION) INSTRUMENTATION. (FLYGT APP721 CONTROLLER)
- ALL COMPONENTS OF THE PUMP STATION SHALL CONFORM TO THE LATEST STANDARDS OF THE TOWN OF BETHLEHEM DEPARTMENT OF PUBLIC WORKS.



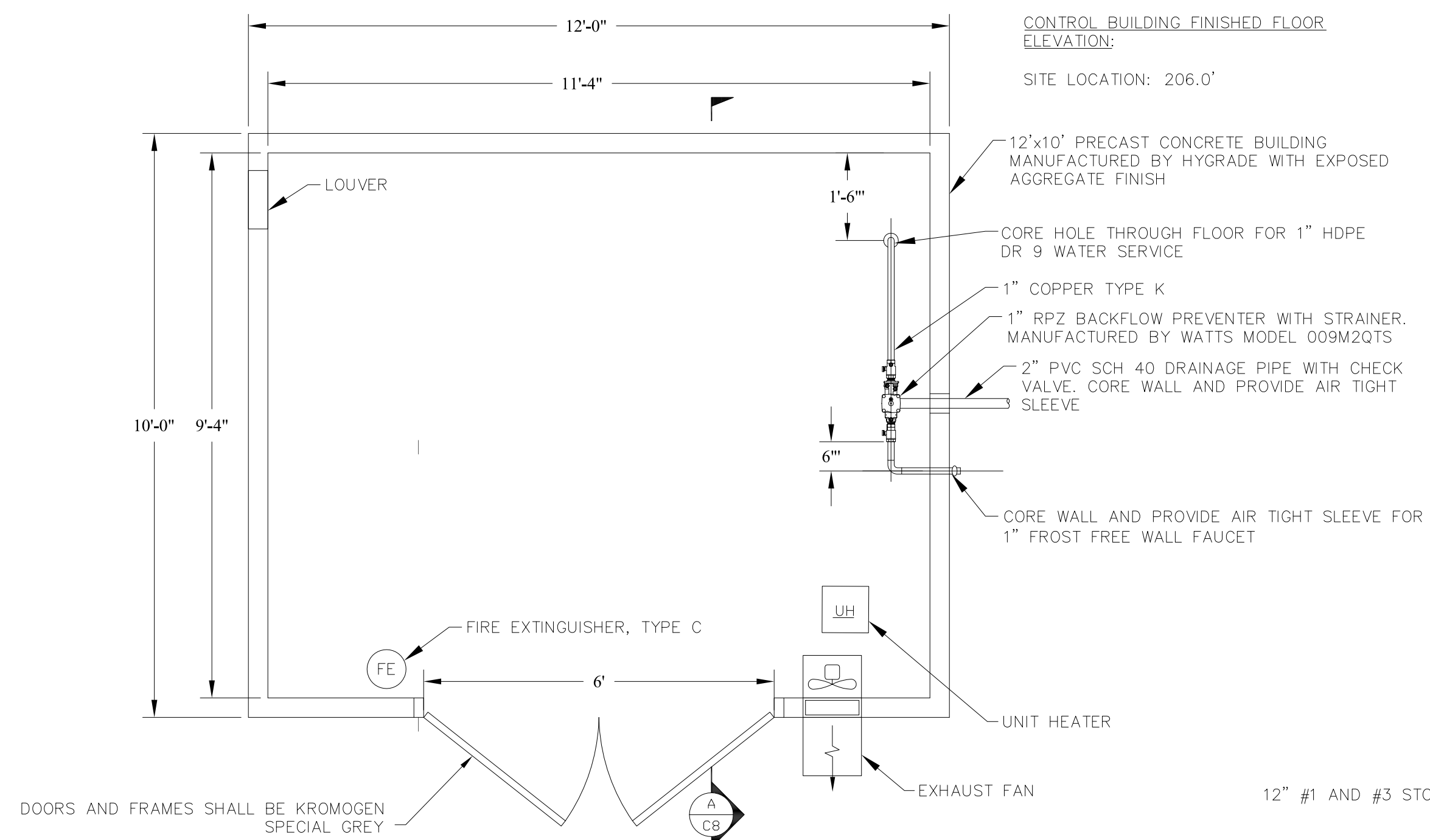
TOWN PAVING DETAIL
SCALE: NTS



CONCRETE GENERATOR PAD DETAIL
NOT TO SCALE

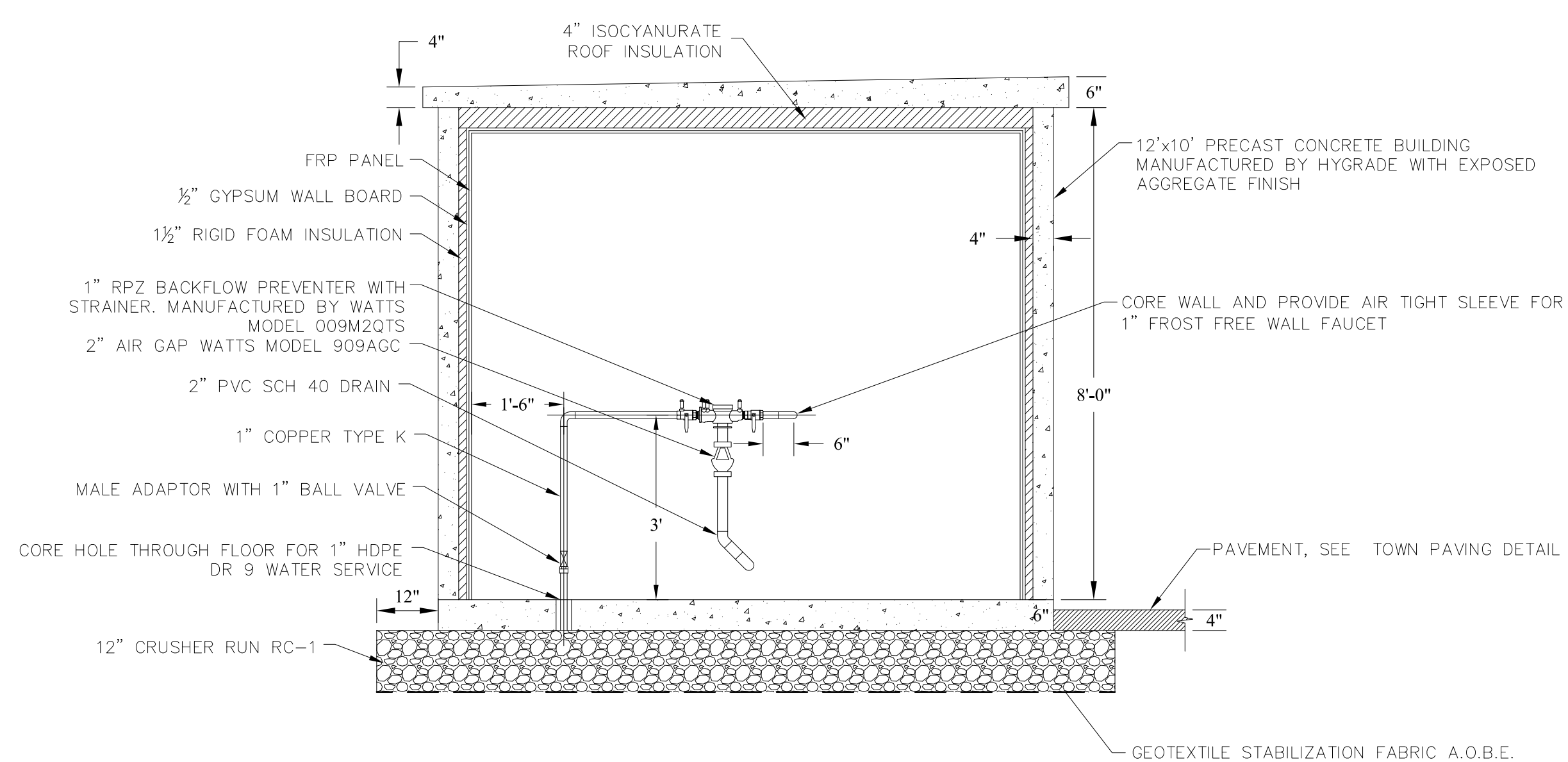
NOTES:

- ALL DOOR LOCKS SHALL MATCH TOWN SET. CONTRACTOR SHALL PROVIDE (4) KEYS.
- FLOOR AND ROOF EDGE SHALL BE PAINTED EXTERIUT #50 SP. GREY
- CONTROL BUILDING FINISHED FLOOR ELEVATION: 206.0'
- SITE LOCATION: 206.0'

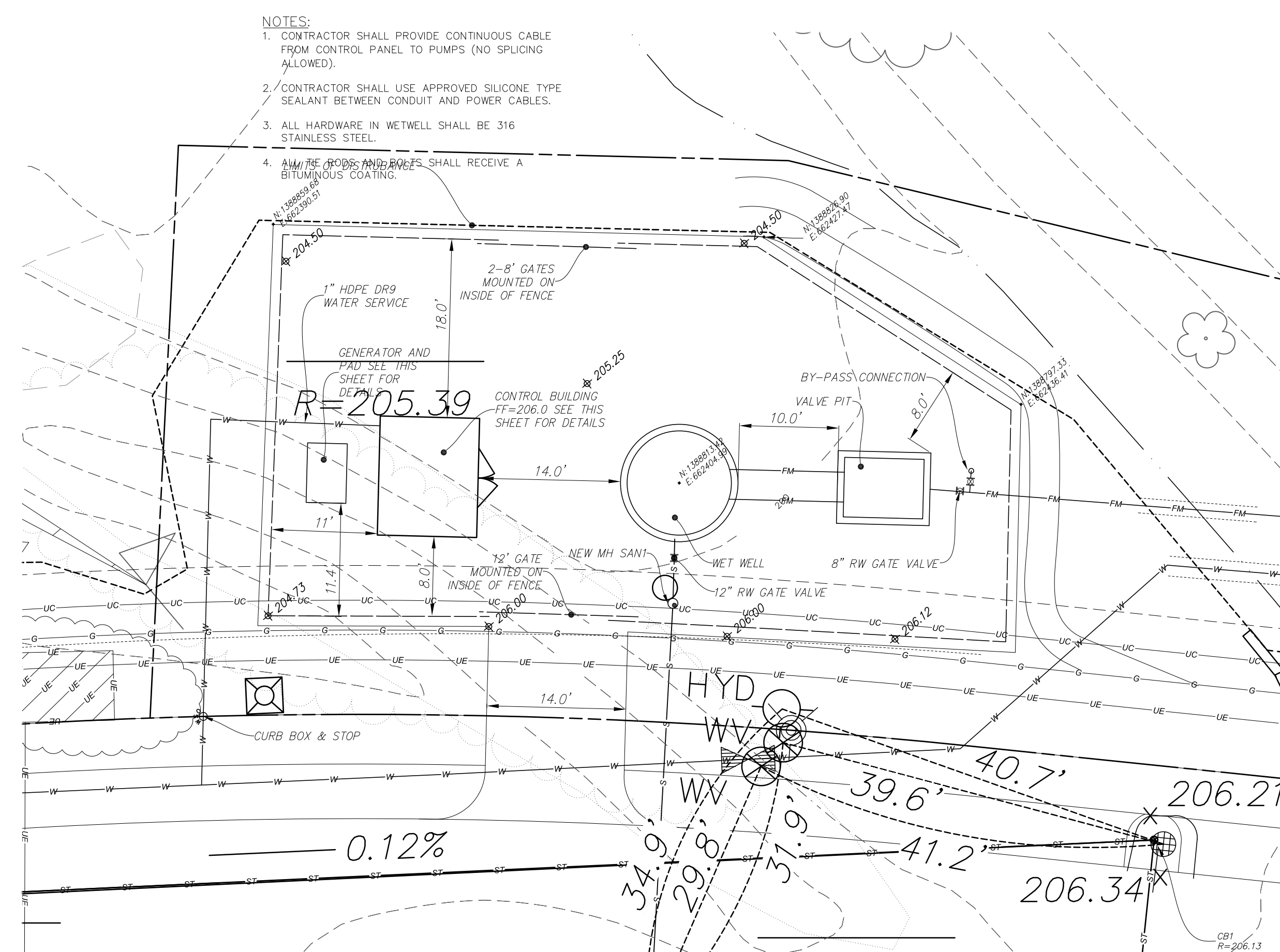


CONTROL BUILDING FLOOR PLAN
SCALE: 1/2"=1'

SANITARY SEWER, STORM SEWER AND HYDRANT & WATER VALVE TIE RECORD PLAN (LAST REVISED 10-16-12)



CONTROL BUILDING SECTION 'A'
SCALE: 1/2"=1'



PUMP STATION SITE PLAN
SCALE: 1"=10'-0"

