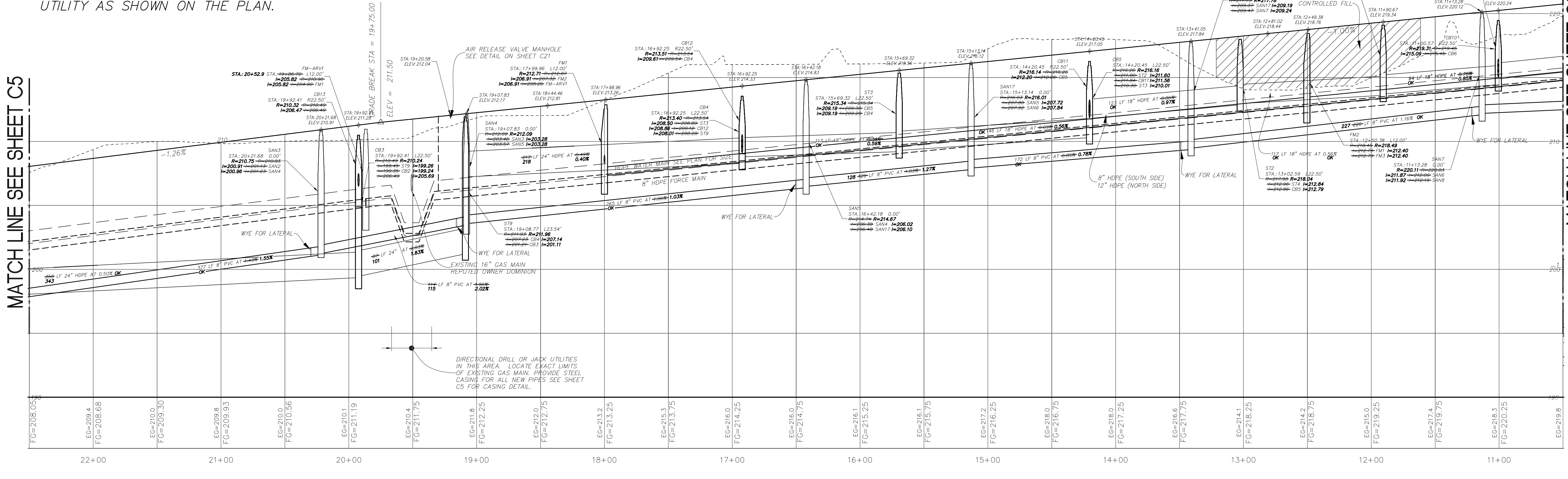


VISTA BOULEVARD PLAN

NOTE: ASPHALT SPOT ELEVATIONS SHOWN HEREON ARE TOP OF ASPHALT BINDER ELEVATION.

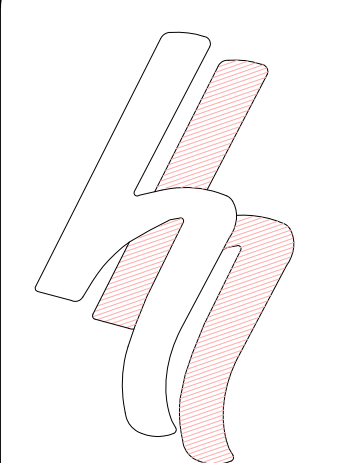
NOTE:
 1. CONTRACTOR SHALL INSTALL BENDS ALONG WATER MAINS AND FORCE MAINS NECESSARY TO MAINTAIN LOCATION OF UTILITY AS SHOWN ON THE PLAN.



VISTA BOULEVARD PROFILE

NOTE:
 RECORD INFORMATION SHOWN HEREON OBTAINED BY INGALLS & ASSOCIATES LLP FROM A FIELD SURVEY CONDUCTED AUGUST 8, 2012 THROUGH AUGUST 13, AND REFLECTS CONDITIONS EXISTING AT THOSE OCCASIONS.

SANITARY SEWER, STORM SEWER AND HYDRANT & WATER VALVE TIE RECORD PLAN (LAST REVISED 10-16-12)



HERSHBERG & HERSHBERG
 Consulting Engineers and Land Surveyors
 18 Locust Street
 Albany, New York 12203

ALTERATION OF THIS DOCUMENT EXCEPT BY A LICENSED PROFESSIONAL ENGINEER OR LAND SURVEYOR, IS ILLEGAL.

DATE	REVISIONS
5/11/11	HYDRANT & LATERAL LOCATION
10/4/11	CONSTRUCTION ISSUE #1
11/7/11	ELECTRIC SWITCH GEARS
4/12/12	COMMUNICATIONS
5/10/12	MH/SWITCH GEAR STA. 20+00
5/14/12	PULLING MH STA. 15+50

PUBLIC INFRASTRUCTURE CONSTRUCTION
 VISTA TECHNOLOGY CAMPUS
 TOWN OF BETHLEHEM
 ALBANY COUNTY, STATE OF NEW YORK

SCALE: H-T=40' V-T=4' GY: WM
 DATE: 2/8/11
 GJK: DRH
 FILE: 110027-1.dwg
 110027-1.dwg