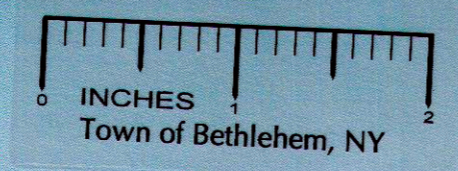


WEST ELEVATION (FRONT)

- ALUMINUM CLAD WINDOWS
- SHED DORMERS W/ ACCCENT METAL ROOFING (BEYOND)
- CULTURED STONE BASE
- SUN SHADES W/ METAL ROOFING



ELEV.: 23'-0" (max.)

- MANSARD STYLE ROOF W/ ASPHALT SHINGLES
- EXPOSED TIMBER-LIKE FRAME COVERED ENTRY
- DECORATIVE LIGHT FIXTURES
- FIBER CEMENT BOARD SIDING & TRIM



NORTH ELEVATION (SIDE)

EAST (BACK) & SOUTH ELEVATIONS (SIDE)

EXTERIOR DINING PATIO



PLANNING BOARD
 TOWN OF BETHLEHEM
 ALBANY COUNTY, NEW YORK

This Site Plan Approved.

George J. Jurek
 Title Chairman
 SPA-179A3

Date May 30, 2012



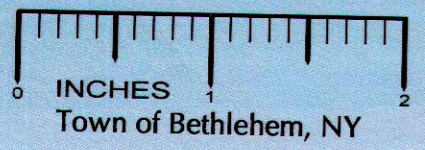
PLANNING BOARD
 TOWN OF BETHLEHEM
 ALBANY COUNTY, NEW YORK

This Site Plan Approved.
George J. Jurek
 Title Chairman
 SPA 119A3

Date May 30, 2013

EAST ELEVATION (FRONT)

ELEV.: 40'-0"
 (max.)



ELEV.: ±27'-0"

- EXTERIOR INSULATION FINISH SYSTEM CLADDING
- CANVAS AWNINGS
- ACCENT DORMERS
- BRICK VENEER
- ARCHITECTURAL CMU BASE

- HIP ROOF W/ ASPHALT SHINGLES
- COMPOSITE TRIM BOARDS & DECORATIVE BRACKETS
- FIBER CEMENT LAP SIDING
- ALUMINUM WINDOW & STOREFRONT ENTRY SYSTEMS
- DECORATIVE LIGHT FIXTURES

PLANNING BOARD
 TOWN OF BETHLEHEM
 ALBANY COUNTY, NEW YORK

This Site Plan Approved.

Gary J. J...
 Title Chairman
 SPA179A3

Date May 30, 2012



NORTH (FRONT) & WEST ELEVATIONS (SIDE)



SOUTH ELEVATION (BACK)

NORTH ELEVATION (FRONT)

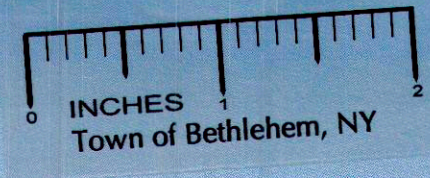


HIP & GABLE ROOFS W/
 ASPHALT SHINGLES

COVERED ENTRANCE

ALUMINUM WINDOW &
 STOREFRONT ENTRY
 SYSTEMS

ELEV.: ±28'-0"



BUILDING SIGNAGE:
 SURFACE APPLIED
 COMPOSITE LETTERS

TIMBER FRAME DETAILING

SUNSHADE

FIBER CEMENT BOARD
 SIDING & TRIM

STONE VENEER BASE

MEDICAL
 OFFICE



EAST ELEVATION



WEST (SIDE) & SOUTH
 ELEVATIONS (BACK)

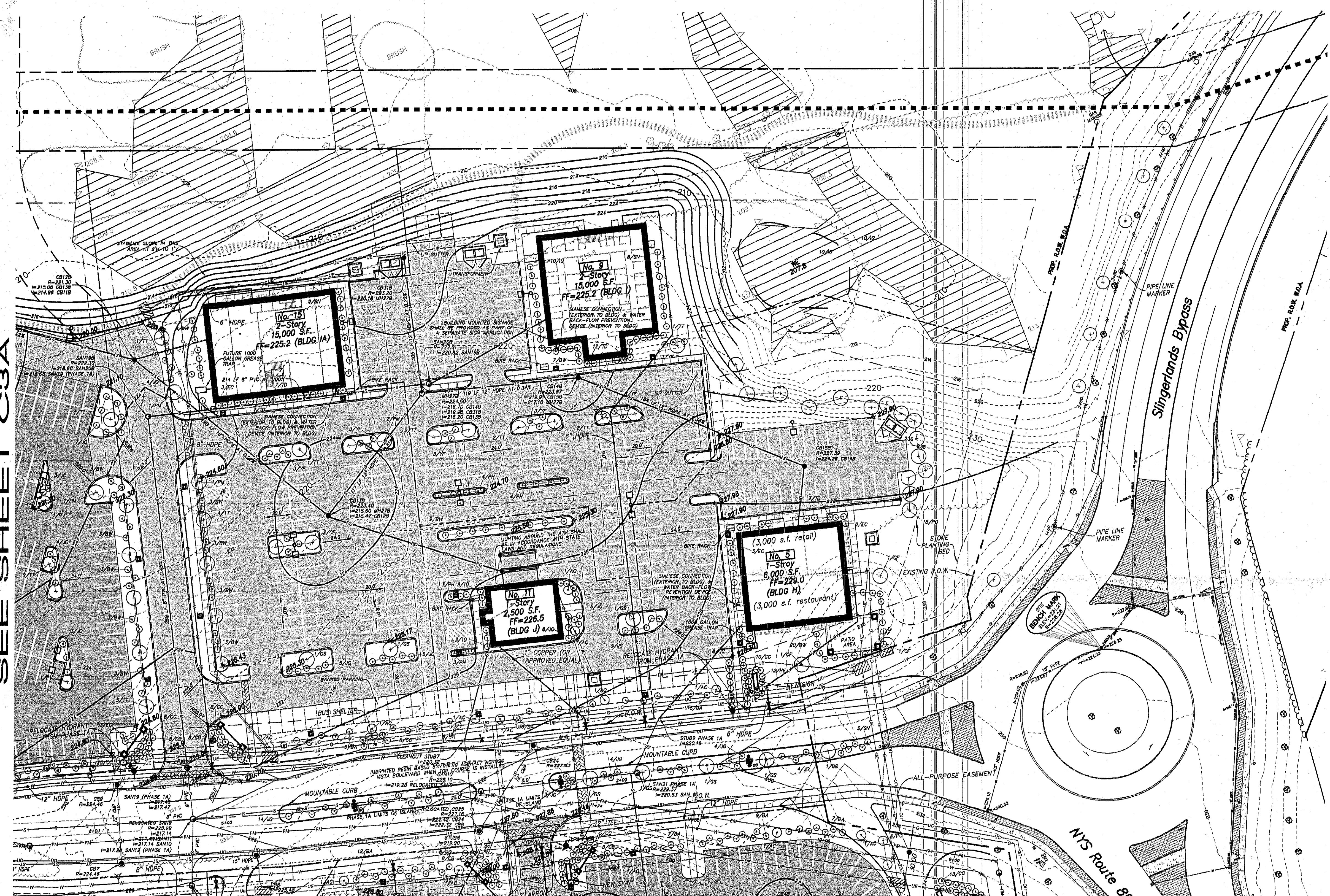
PLANNING BOARD
 TOWN OF BETHLEHEM
 ALBANY COUNTY, NEW YORK

This Site Plan Approved.

George J. Jurek
 Title Chairman
 SPA 179 A3

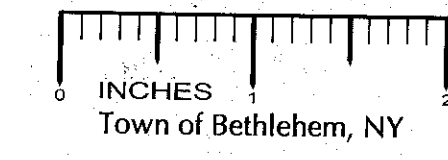
Date May 30, 2012

SEE SHEET C3A



SEE SHEET C5A

SITE PLAN No. 5, 9, 15 and 11 Vista Boulevard (BUILDINGS H, I, IA, J)



LEGEND

- EXISTING CONTOURS
- EXISTING IMPROVEMENTS TO BE REMOVED
- PROPOSED CONTOURS
- PROPOSED CONCRETE WALK
- PROPOSED CURB
- PROPOSED PAVEMENT
- PROPOSED PAVEMENT MARKINGS
- HANDICAPPED PARKING
- PROPOSED CATCH BASIN
- PROPOSED MANHOLE
- PROPOSED HYDRANT & VALVE
- PROPOSED SANITARY SEWER (GRAVITY)
- PROPOSED WATER MAIN
- PROPOSED STORM SEWER
- POTENTIAL PARCEL LINE (REQUIRES SUPERVISION APPROVAL BY THE TOWN OF BETHLEHEM PLANNING BOARD)
- PROPERTY LINE
- UTILITY EASEMENT
- BUILDING SET BACK LINE
- PROPOSED DECORATIVE LIGHT POLE
- PROPOSED LIGHT POLE
- PROPOSED SHRUB OR TREE
- EXISTING WETLAND
- PROPOSED WALKING TRAIL (EXACT LOCATION TO BE DETERMINED IN THE FIELD AND SUBJECT TO TENANT APPROVAL)
- PROPOSED MASONRY PIER AND DECORATIVE METAL FENCE
- PROPOSED STAMPED ASPHALT CROSS WALK
- PROPOSED POROUS PAVEMENT
- PROPOSED STANDARD PAVEMENT

PARKING ANALYSIS TABLE

| description | requirement | quantity | # required |
|-------------------------------|-------------|-----------|------------|
| office | 1/200 sf | 22,500 sf | 113 |
| bank | 1/400 sf | 2,500 sf | 7 |
| restaurant | 1/75 sf | 3,000 sf | 40 |
| retail | 1/250 sf | 10,500 sf | 42 |
| total spaces required | | | 202 |
| paved spaces provided | | | 218 |
| banked spaces provided | | | 37 |
| total spaces provided | | | 255 |

AMENDMENT NOTE:
 1. THE IMPERVIOUS AREA PROPOSED ON THIS SHEET AND SHEET C3A, WHICH IS TRIBUTARY TO SWPPP#2 HAS BEEN REDUCED BY 11,400 SF FROM WHAT WAS APPROVED AS PART OF PHASE 1B DEVELOPMENT.
 2. THE APPLICANT IS REQUIRED TO RETURN TO THE PLANNING BOARD WITH FINAL SITE DETAILS AND BUILDING ELEVATIONS FOR BUILDINGS 10 AND 65.

PLANT MATERIAL SCHEDULE

| SYM | BOTANICAL NAME | COMMON NAME | SIZE | COMMENTS |
|-------------------|---|-------------------------|-------------------------------------|----------|
| SHRUBS | | | | |
| AC | AMELANCHIER CANADENSIS | SHADBLOW SERVICEBERRY | 6'-7" HT. HEAVY | B & B |
| BA | BERBERIS THUNBERGII 'ATROPURPUREA' | RED BARBERRY | 18"-24" HT. | C.G. |
| BW | BUXUS x 'WINTER GEM' | WINTER GEM BOXWOOD | 18" HT. | C.G. |
| EG | EUNIMUS ALATUS 'COMPACTA' | COMPACT BURNING BUSH | 2'-3' HT. | B & B |
| IG | ILEX GLABRA | INKBERRY | 2'-1 1/2' HT. | B & B |
| JC | JUNIPERUS CHINENSIS 'PFTIZERIANA' | PFTIZER JUNIPER | 3' SPREAD | B & B |
| JG | JUNIPERUS CHINENSIS 'SEA GREEN' | SEA GREEN JUNIPER | 18" HT. | B & B |
| PM | PRUNUS MUGHUS MUGO 'SNOWMOUND' | MUGHO PINE | 5 GAL. | C.G. |
| SN | SPIRAEA NIPPONICA 'SNOWMOUND' | SNOWMOUND SPIREA | 24"-30" HT. | C.G. |
| TD | TAXUS X MEDIA 'DENSIFORMIS' | DENSE SPREADING YEW | 24" HT. | B & B |
| YF | YUCCA FILAMENTOSA 'GOLDEN SWORD' | YUCCA | 18"-24" HT. | C.G. |
| TREES | | | | |
| CF | CORNUS FLORIDA | WHITE FLOWERING DOGWOOD | 2 1/2" CAL. | B & B |
| GS | QUERCUS TRICANTHOS 'INERMIS' 'SUNBURST' | SUNBURST HONEY-LOCUST | 2 1/2"-3" CAL. | B & B |
| PD | PICEA OMORICA | SERBIAN SPRUCE | EVEN COMBO OF 5'-6" HT. & 6'-8" HT. | B & B |
| TT | TILIA TOMENTOSA 'STERLING SILVER' | SILVER LINDEN | 3"-3 1/2" CAL. | NURSERY |
| PERENNIALS | | | | |
| HE | HEMEROCALLIS 'HYPERION' | DAY LILIES | - | - |
| CC | CHRYSANTHEMUM COCCINUM | PAINTED DAISY | - | C.G. |
| CB | CHRYSANTHEMUM SUPERBUM 'ALASKA' | SHASTA DAISY | 1 GAL. | C.G. |
| GRASSES | | | | |
| PH | PENNISETUM ALOPECUROIDES 'HAMEL' | DWARF FOUNTAIN GRASS | #3 POT | - |

TOWN OF BETHLEHEM PLANNING BOARD APPROVAL

PLANNING BOARD
 TOWN OF BETHLEHEM
 ALBANY COUNTY, NEW YORK

This Site Plan Approved.

[Signature]
 Title: *Submittal*
 SPA 179A3
 Date: *May 30, 2012*

HERSHBERG & HERSHBERG
 Consulting Engineers and Land Surveyors
 18 Locust Street
 Albany, New York 12203

ALTERATION OF THIS DOCUMENT EXCEPT BY A LICENSED PROFESSIONAL ENGINEER OR LAND SURVEYOR, IS ILLEGAL.

STATE OF NEW YORK
 PROFESSIONAL ENGINEER IN LAND SURVEYING
 44216

REVISIONS

| DATE | REMARKS |
|---------|------------------------------|
| 4/3/12 | BUILDING No. 13 & 15 PARKING |
| 4/13/12 | 13 BANKED PARKING |
| 4/27/12 | TOWN LETTER DATED 4/26/12 |
| 5/7/12 | UTILITY COORDINATION |
| 5/15/12 | BUILDING FLOOR PLANS OVERLAY |
| 5/17/12 | AMENDMENT NOTE #2 |

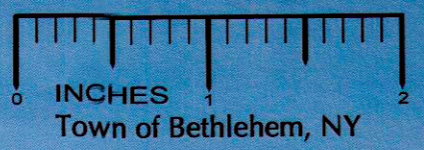
PROPOSED SITE PLAN - PHASE 1B AMENDMENT
 VISTA TECHNOLOGY CAMPUS
 TOWN OF BETHLEHEM
 ALBANY COUNTY, STATE OF NEW YORK

SCALE: 1" = 40'

FILE

C4A

SOUTH ELEVATION (FRONT)



BRICK VENEER
 ARCHITECTURAL
 CMU ACCENTS &
 BASE

ELEV.: ±27'-6"

ELEV.: 31'-0"
 (max.)

EXTERIOR INSULATION
 FINISH SYSTEM

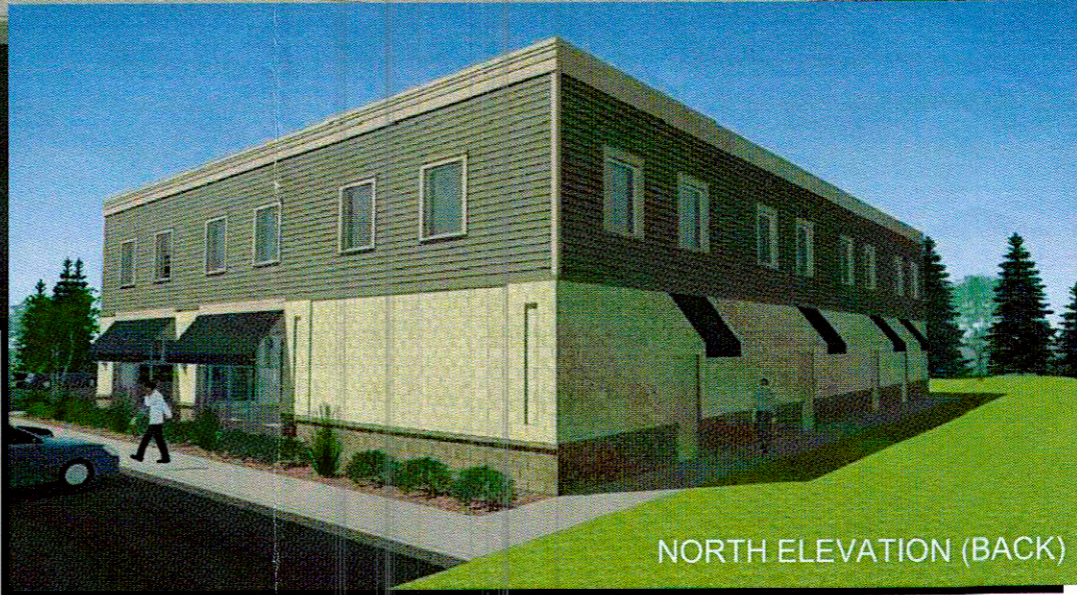
BUILDING SIGNAGE:
 SURFACE APPLIED
 COMPOSITE LETTERS

ENTRANCE CANOPIES

ALUMINUM WINDOW &
 STOREFRONT ENTRY
 SYSTEMS



EAST ELEVATION (SIDE)
 (WEST ELEVATION SIMILAR)



NORTH ELEVATION (BACK)

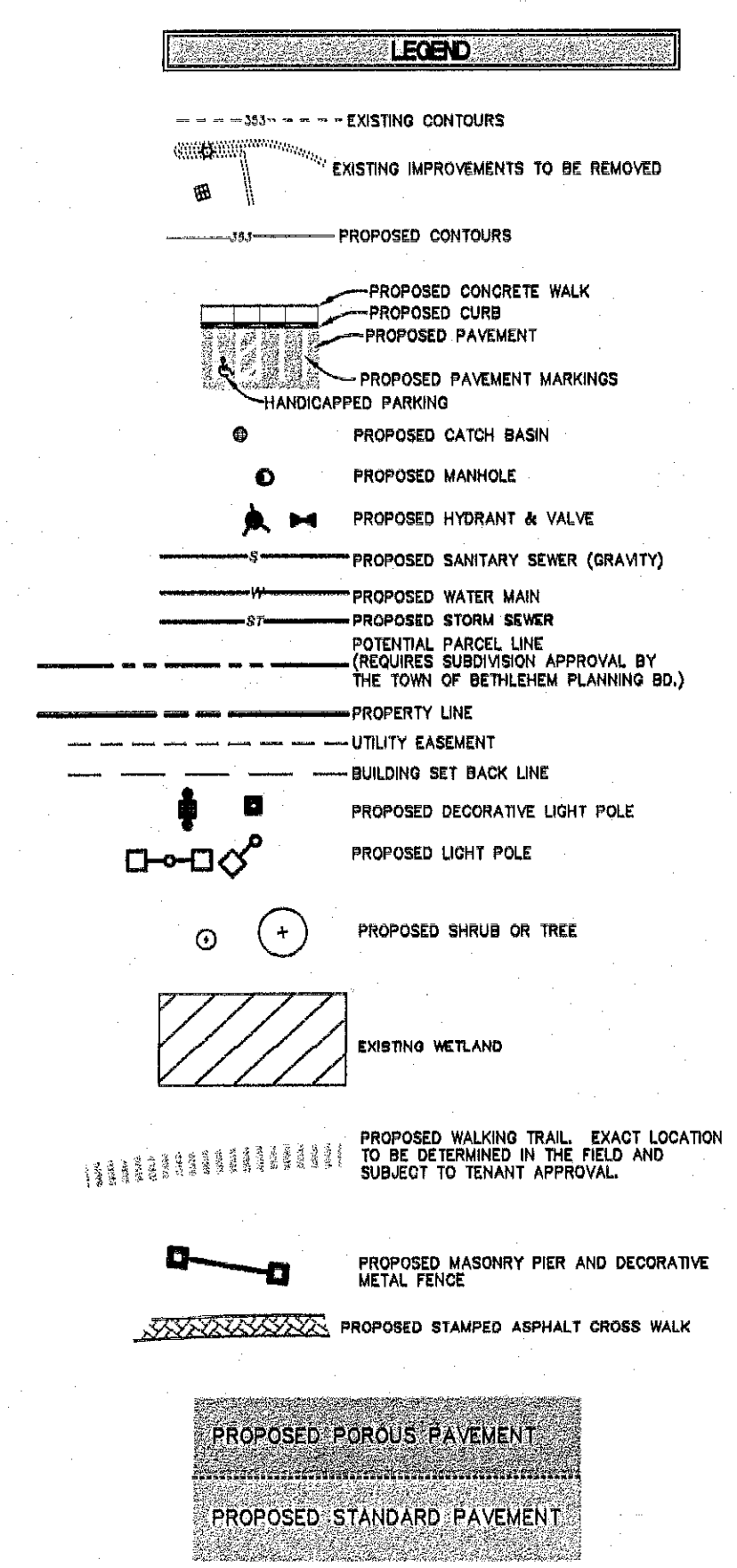
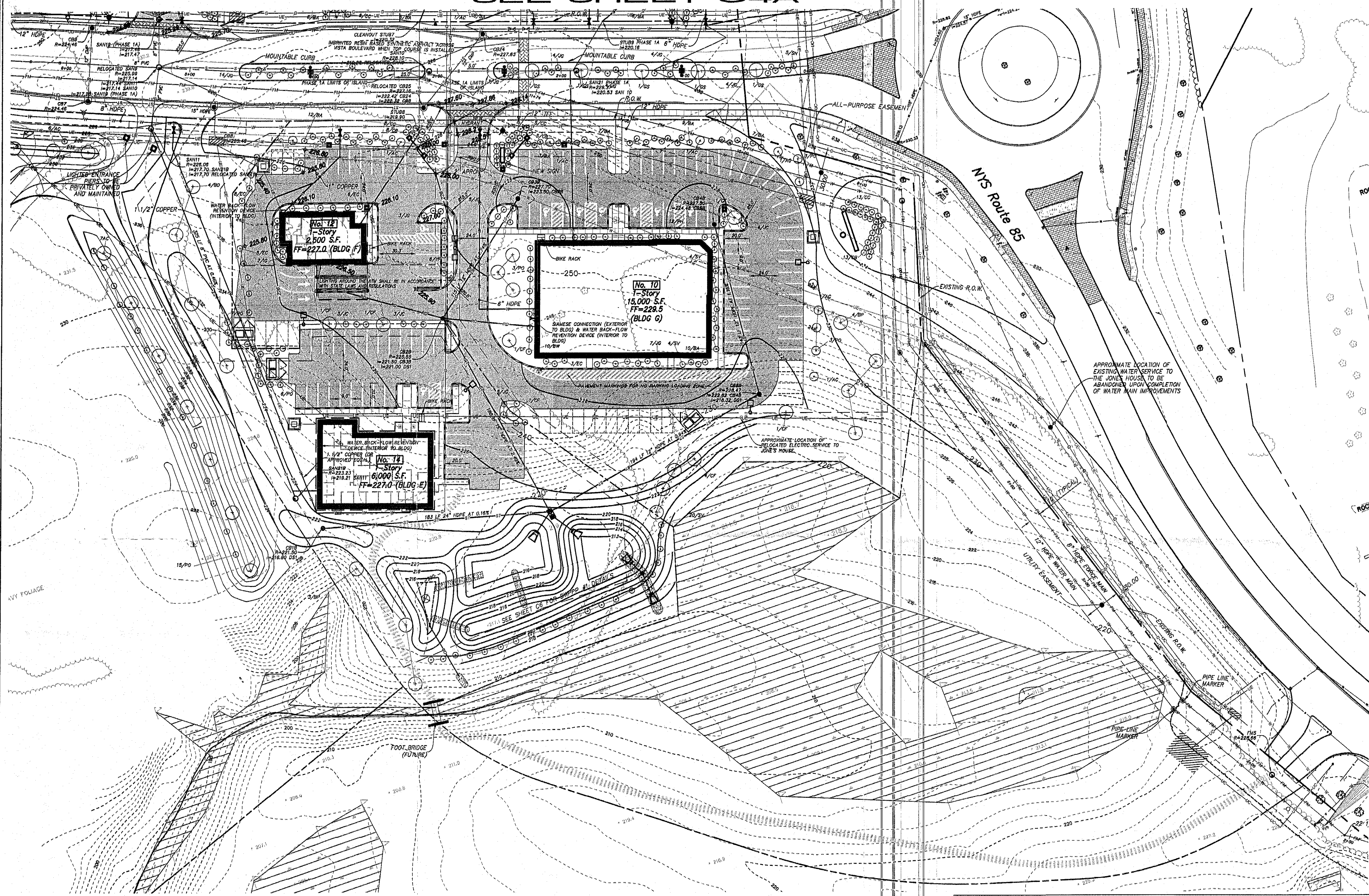
PLANNING BOARD
 TOWN OF BETHLEHEM
 ALBANY COUNTY, NEW YORK

This Site Plan Approved.

Title Guisey J. J.
 Chairman
 SPA 179 A3

Date May 30, 2012

SEE SHEET C4A

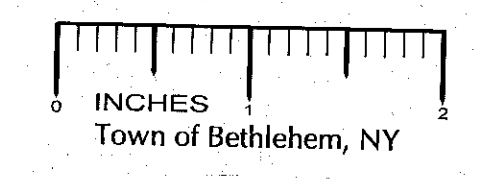


PARKING ANALYSIS TABLE

| description | requirement | quantity | # required |
|-------------------------------|-------------|-----------|------------|
| medical office | 1/200 sf | 6,000 sf | 30 |
| bank | 1/400 sf | 2,500 sf | 7 |
| retail | 1/250 sf | 15,000 sf | 60 |
| total spaces required | | | 97 |
| paved spaces provided | | | 107 |
| banked spaces required | | | 20 |
| total spaces provided | | | 127 |

AMENDMENT NOTE:
 1. THE IMPERVIOUS AREA PROPOSED ON THIS SHEET AND SHEET C3A, WHICH IS TRIBUTARY TO SWPPP#2 HAS BEEN REDUCED BY 11,400 SF± FROM WHAT WAS APPROVED AS PART OF PHASE 1B DEVELOPMENT.
 2. THE APPLICANT IS REQUIRED TO RETURN TO THE PLANNING BOARD WITH FINAL SITE DETAILS AND BUILDING ELEVATIONS FOR BUILDINGS 10 AND 65.

SITE PLAN No. 14, 12 and 10 Vista Boulevard (BUILDINGS E,F,G)



PLANT MATERIAL SCHEDULE

| SYM | BOTANICAL NAME | COMMON NAME | SIZE | COMMENTS |
|-------------------|------------------------------------|-------------------------|-----------------------|----------|
| SHRUBS | | | | |
| AC | AMELANCHIER CANADENSIS | SHADBLow SERVICEBERRY | 6'-7' HT. HEAVY | B & B |
| BA | BERBERIS THUNBERGII 'ATROPURPUREA' | RED BARBERRY | 18"-24" HT. | C.G. |
| BW | BUXUS 'WINTER GEM' | WINTER GEM BOXWOOD | 18" HT. | C.G. |
| EC | EUCONYMIUS ALATUS 'COMPACTA' | COMPACT BURNING BUSH | 2'-3' HT. | B & B |
| IG | ILEX GLABRA | INKBERRY | 2 1/2' HT. | B & B |
| JC | JUNIPERUS CHINENSIS 'PITZERIANA' | PFITZER JUNIPER | 3' SPREAD | B & B |
| JG | JUNIPERUS CHINENSIS 'SEA GREEN' | SEA GREEN JUNIPER | 18" HT. | C.G. |
| PM | PRUNUS MUGUS 'MUGO SLOWMOUND' | MUGHO PINE | 5 GAL. | C.G. |
| SV | STRYNGIA VULGARIS | COMMON LILAC | 3'-4' HT. | B & B |
| TD | TAXUS MEDIA 'DENSIFORMIS' | DENSE SPREADING YEW | 24" HT. | B & B |
| YF | YUCCA FILAMENTOSA 'GOLDEN SWORD' | YUCCA | 18"-24" HT. | C.G. |
| TREES | | | | |
| CF | CORNUS FLORIDA | WHITE FLOWERING DOGWOOD | 2 1/2" GAL. | B & B |
| BP | BETULA PAPIRIFERA | CANOE BIRCH | 8'-10' HT.(HVV CLUMP) | B & B |
| PO | PICEA OMORICA | SERBIAN SPRUCE | 5'-6' HT. | B & B |
| PERENNIALS | | | | |
| CC | CHRYSANTHEMUM COCCINUM | PAINTED DAISY | 1/2 GAL. | C.G. |
| CB | CHRYSANTHEMUM SUPERBUM 'ALASKA' | SHASTA DAISY | 1 GAL. | C.G. |
| GRASSES | | | | |
| PH | PENNISETUM ALOPECUROIDES 'HAEMEL' | DWARF FOUNTAIN GRASS | #3 POT | - |

TOWN OF BETHLEHEM PLANNING BOARD APPROVAL
 PLANNING BOARD
 TOWN OF BETHLEHEM
 ALBANY COUNTY, NEW YORK
 This Site Plan Approved
 [Signature]
 Date: May 30 2012

HERSHBERG & HERSHBERG
 Consulting Engineers and Land Surveyors
 18 Locust Street
 Albany, New York 12203

ALTERATION OF THIS DOCUMENT EXCEPT BY A LICENSED PROFESSIONAL ENGINEER OR LAND SURVEYOR, IS ILLEGAL.

STATE OF NEW YORK
 ENGINEER & SURVEYOR
 44226

| DATE | REVISIONS |
|---------|------------------------------|
| 3/29/12 | GENERAL |
| 4/3/12 | SUBMISSION TO THE TOWN |
| 4/27/12 | TOWN LETTER DATED 4/26/12 |
| 5/7/12 | UTILITY COORDINATION |
| 5/15/12 | BUILDING FLOOR PLANS OVERLAY |
| 5/17/12 | AMENDMENT NOTE #2 |

PROPOSED SITE PLAN - PHASE 1B AMENDMENT
 VISTA TECHNOLOGY CAMPUS
 TOWN OF BETHLEHEM
 ALBANY COUNTY, STATE OF NEW YORK

SCALE: 1"=40'
 DATE: 5/16/12
 FILE: 120073

C5A