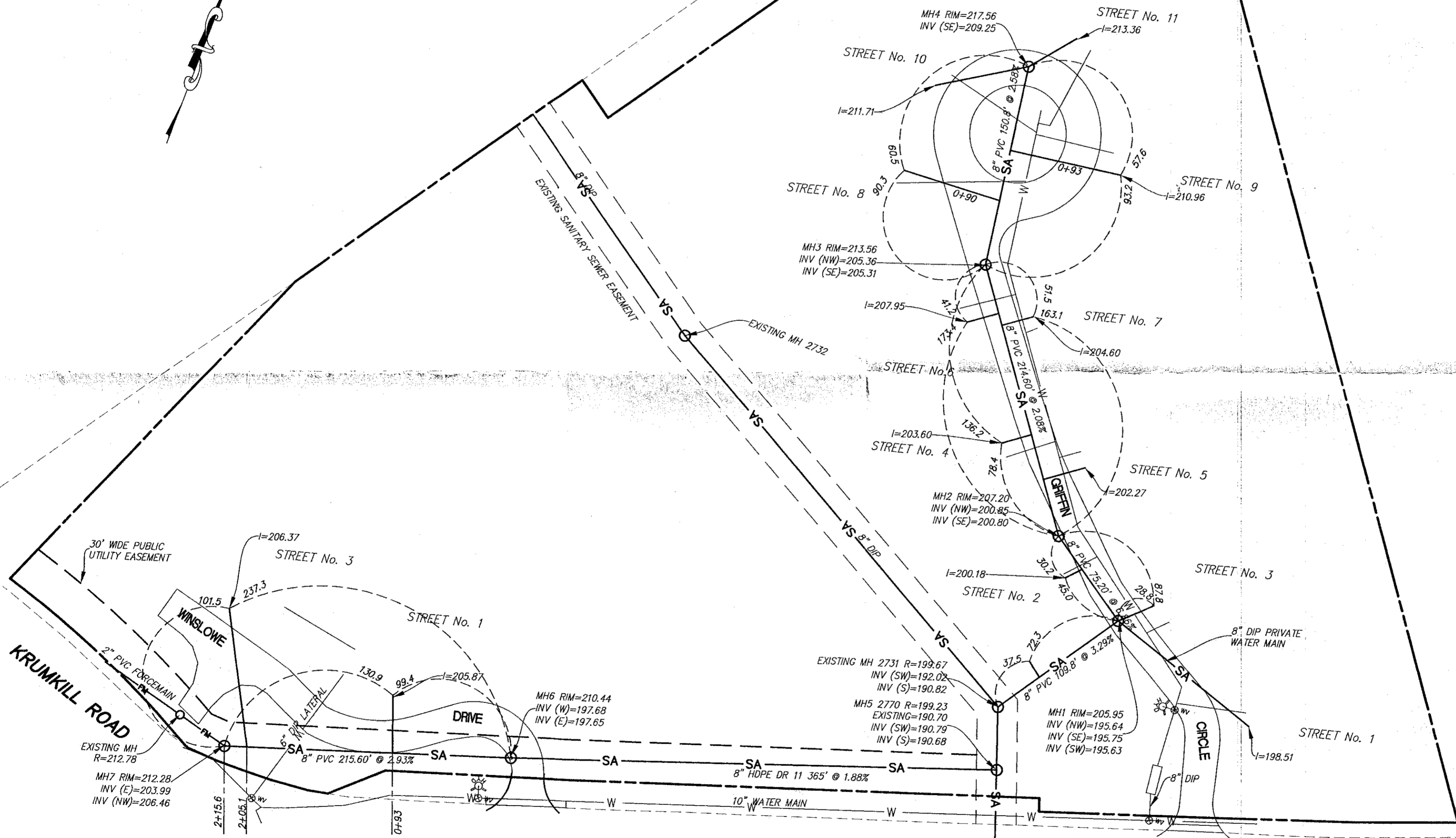
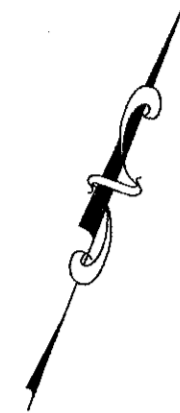


GENERAL NOTES

1. ALL SEWER LATERALS ARE 6" PVC UNLESS OTHERWISE NOTED



TOWN OF BETHLEHEM, NEW YORK
DEPARTMENT OF PUBLIC WORKS
- OFFICE COPY -

0 1 2 INCHES

SPA 199

HERSHBERG & HERSHBERG
Consulting Engineers
and Land Surveyors
18 Locust Street
Albany, New York 12203

AS BUILT RECORD MAP FOR SANITARY SEWER AT

PARKSIDE CONDOMINIUMS (FORMERLY BLESSINGS CORNER)

TOWN OF BETHLEHEM, COUNTY OF ALBANY, STATE OF NEW YORK

ALTERATION OF THIS DOCUMENT, EXCEPT BY A LICENSED PROFESSIONAL ENGINEER OR LAND SURVEYOR, IS ILLEGAL.

REVISIONS: LATERALS 9/4/14; STREET ADDRESSES 9/5/14; TOWN OF BETHLEHEM COMMENTS: 2/12/15

DATE: 9/2/14 SCALE: 1"=60' BY: WM CHK: GRT MAP No.: