

SITE DEVELOPMENT PLANS

FOR:

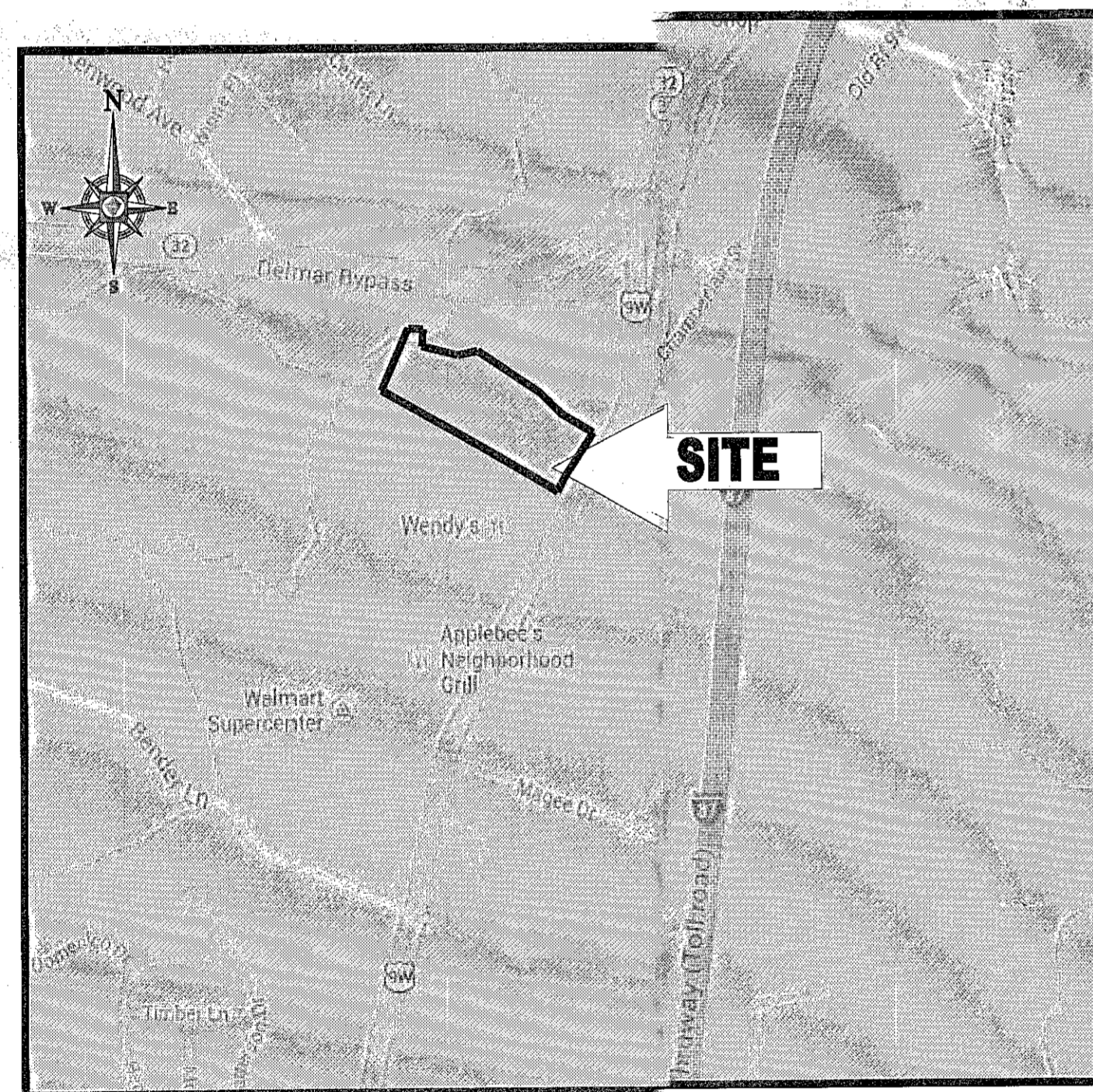
HOSPITALITY SYRACUSE, INC.

PROPOSED

TACO BELL RESTAURANT

WITH DRIVE-THRU

LOCATION OF SITE:
 241 ROUTE 9W
 (NEW RESTAURANT ADDRESS: 237 ROUTE 9W)
 TOWN OF BETHLEHEM
 ALBANY COUNTY, NEW YORK
 MAP 86.00, BLOCK 2, LOT 20



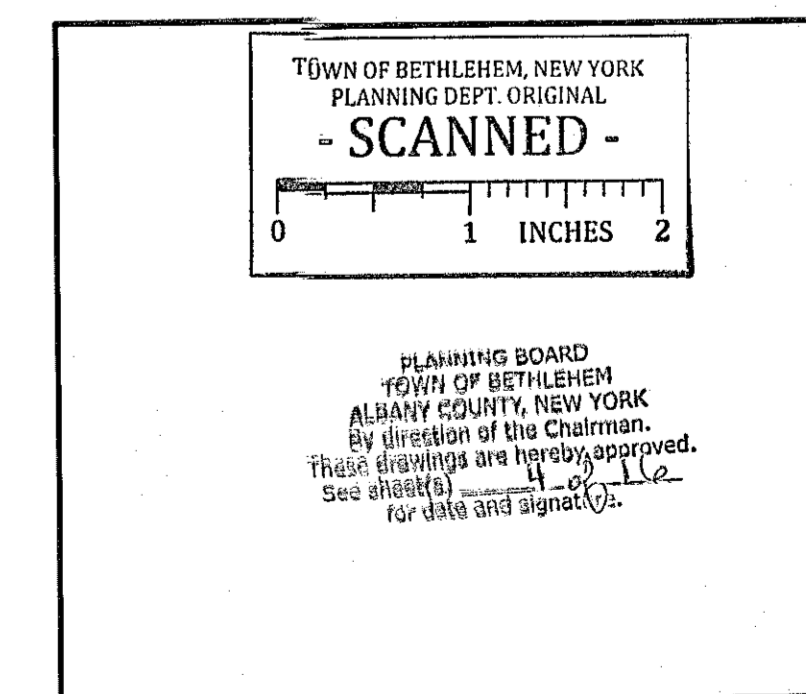
LOCATION MAP
NOT TO SCALE



AREA PLAN
NOT TO SCALE

SHEET TITLE	SHEET NUMBER
COVER SHEET	1 OF 13
GENERAL NOTES SHEET	2 OF 13
DEMOLITION PLAN	3 OF 13
SITE PLAN	4 OF 13
GRADING & DRAINAGE PLAN	5 OF 13
UTILITY PLAN	6 OF 13
SOIL EROSION & SEDIMENT CONTROL PLAN	7 OF 13
SOIL EROSION CONTROL NOTES & DETAILS SHEET	8 OF 13
LANDSCAPE PLAN	9 OF 13
LANDSCAPE NOTES & DETAILS SHEET	10 OF 13
CONSTRUCTION DETAILS SHEET	11 OF 13
CONSTRUCTION DETAILS SHEET	12 OF 13
TRASH ENCLOSURE DETAILS SHEET	13 OF 13
LIGHTING PLAN	1 OF 1
ALTA / ACSM SURVEY (BY OTHERS)	1 OF 1

SHEET INDEX



TOWN OF BETHLEHEM APPROVAL AREA

THE EDUCATION LAW OF THE STATE OF NEW YORK PROHIBITS ANY PERSON ALTERING ANYTHING ON THESE DRAWINGS AND/OR THE ACCOMPANYING SPECIFICATIONS, UNLESS IT IS UNDER THE DIRECTION OF A LICENSED PROFESSIONAL ENGINEER, WHERE SUCH ALTERATIONS ARE MADE, THE PROFESSIONAL ENGINEER MUST SIGN, SEAL, DATE AND DESCRIBE THE FULL EXTENT OF THE ALTERATION ON THE DRAWINGS AND/OR IN THE SPECIFICATIONS. (NYS EDUCATION LAW SECTION 7209.2)

PREPARED BY
BOHLER ENGINEERING

THE EDUCATION LAW OF THE STATE OF NEW YORK PROHIBITS ANY PERSON ALTERING ANYTHING ON THESE DRAWINGS AND/OR THE ACCOMPANYING SPECIFICATIONS, UNLESS IT IS UNDER THE DIRECTION OF A LICENSED PROFESSIONAL ENGINEER, WHERE SUCH ALTERATIONS ARE MADE, THE PROFESSIONAL ENGINEER MUST SIGN, SEAL, DATE AND DESCRIBE THE FULL EXTENT OF THE ALTERATION ON THE DRAWINGS AND/OR IN THE SPECIFICATIONS. (NYS EDUCATION LAW SECTION 7209.2)

BOHLER ENGINEERING

CORPORATE OFFICE: OFFICES IN: SOUTHBRIDGE, MA; CHATEL VALLEY, PA; CHARLOTTE, NC; WASHINGTON, VA; PHILADELPHIA, PA; SAUGUS, MA; TOWSON, MD; WASHINGTON, DC; WASHINGTON, VA

CIVIL & CONSULTING ENGINEERS
 SURVEYORS
 PROJECT MANAGERS
 ENVIRONMENTAL CONSULTANTS
 LANDSCAPE ARCHITECTS

REVISIONS

REV	DATE	COMMENT	BY
1	06/16/2014	PARKING CHANGES	TCF
2	09/22/2014	REVISED PER TOWN COMMENTS	MED
3	10/28/2014	REVISED PER TOWN COMMENTS	CVM
4	11/21/2014	NEW BUILDING FOOTPRINT	TCF
5	12/31/2014	PER TOWN COMMENTS	TCF
6	02/09/2015	MISC. REVISIONS	TCF
7	02/20/2015	PER TOWN COMMENTS	TCF
8			
9			
10			
11			
12			
13			
14			
15			

PRELIMINARY

PROJECT NO.:	B130197
DRAWN BY:	SH
CHECKED BY:	RWO
DATE:	05/20/2014
SCALE:	AS NOTED
CAD I.D.:	B130197/SS15

PROJECT: **SITE DEVELOPMENT PLANS FOR HOSPITALITY SYRACUSE, INC. PROPOSED TACO BELL RESTAURANT WITH DRIVE-THRU**

LOCATION OF SITE
 241 ROUTE 9W
 TOWN OF BETHLEHEM
 ALBANY COUNTY, NEW YORK

BOHLER ENGINEERING
 5 COMPUTER DRIVE WEST, SUITE 203
 ALBANY, NY 12205
 Phone: (518) 438-9900
 Fax: (518) 438-0900
www.BohlerEngineering.com

W.D. GOEBEL
 PROFESSIONAL ENGINEER
 NEW YORK LICENSE NO. 071284-01
 ALBANY COUNTY, NEW YORK
 THESE DRAWINGS ARE HEREBY APPROVED.
 See sheet(s) 1 of 13 for date and signature.

SHEET TITLE:
COVER SHEET

SHEET NUMBER:
1
 OF 13

REV 7

Sup 26 / SPA 213 01/20/2015