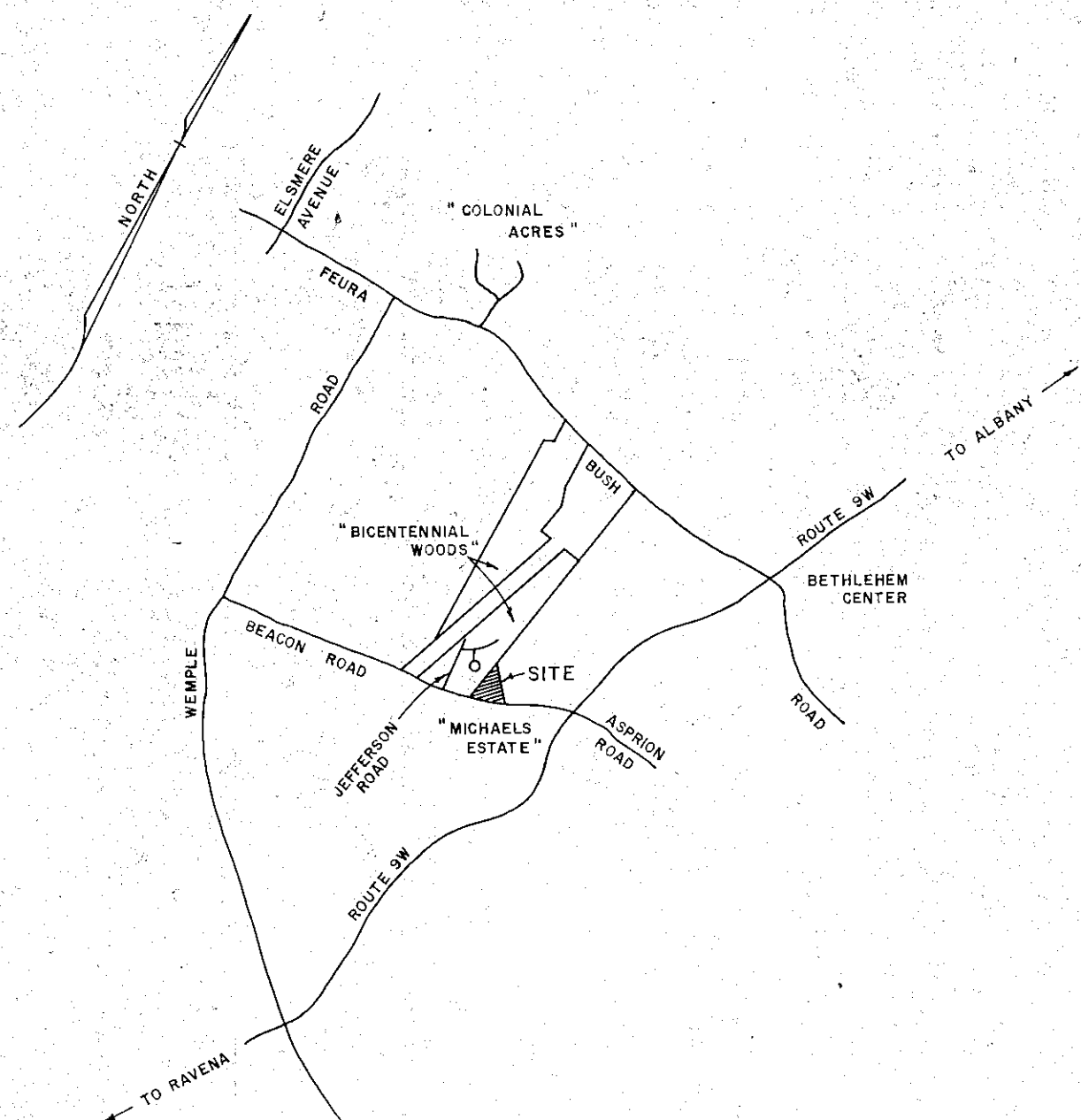
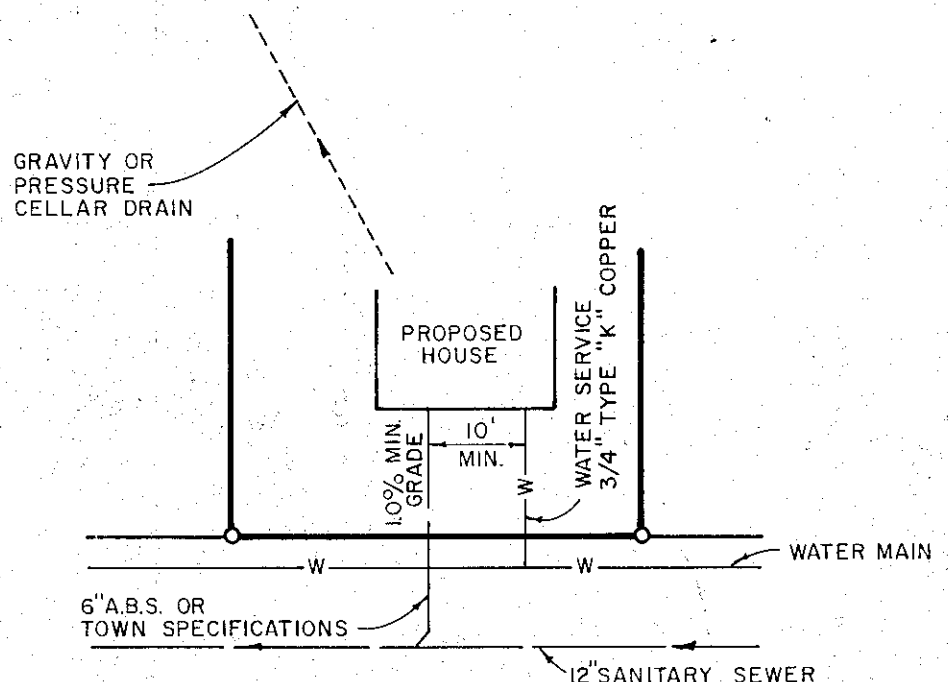


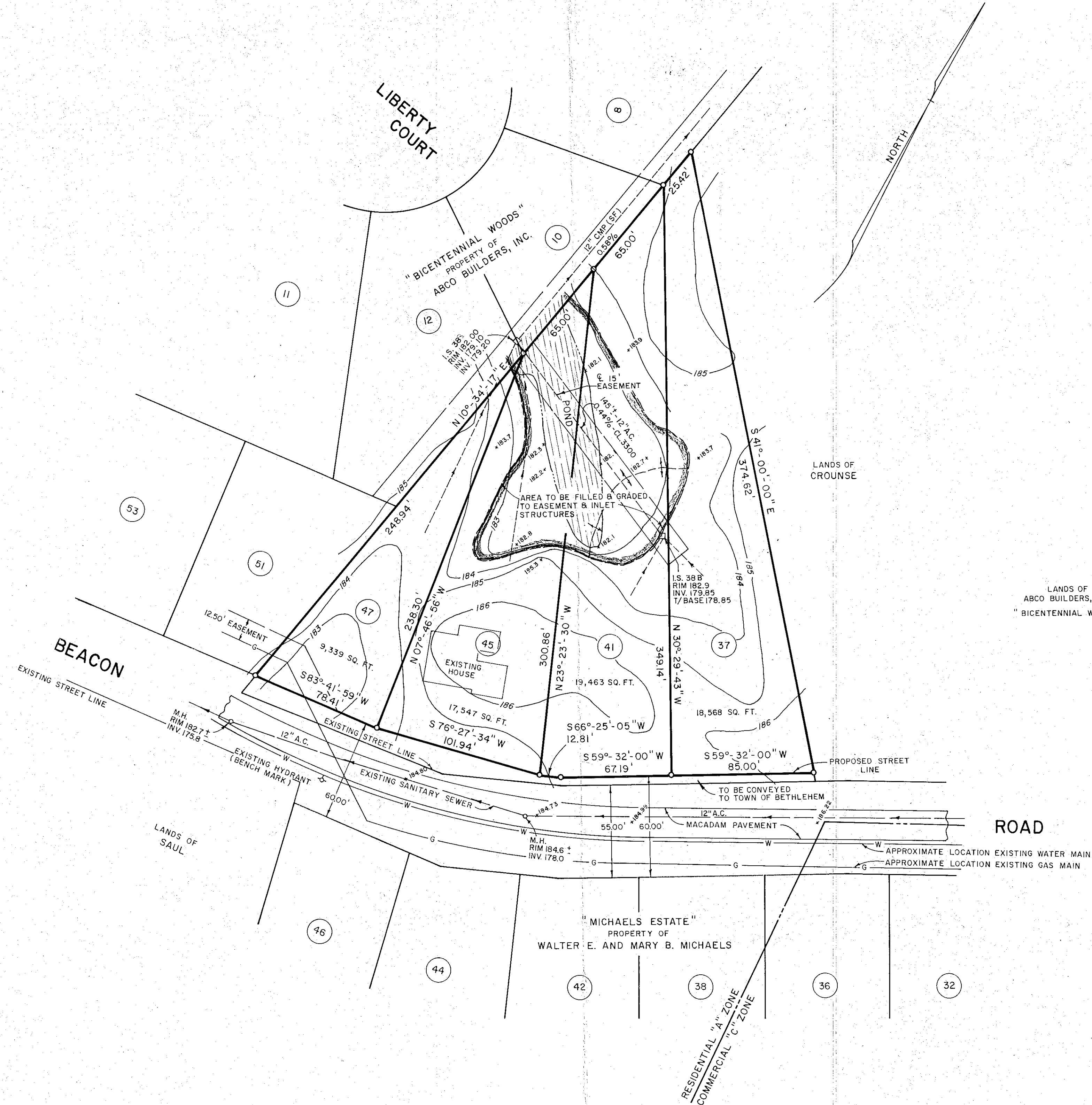
REVISIONS		
NO.	DATE	DESCRIPTION
1	8/11/78	STRUCTURE & EASEMENT CHANGED



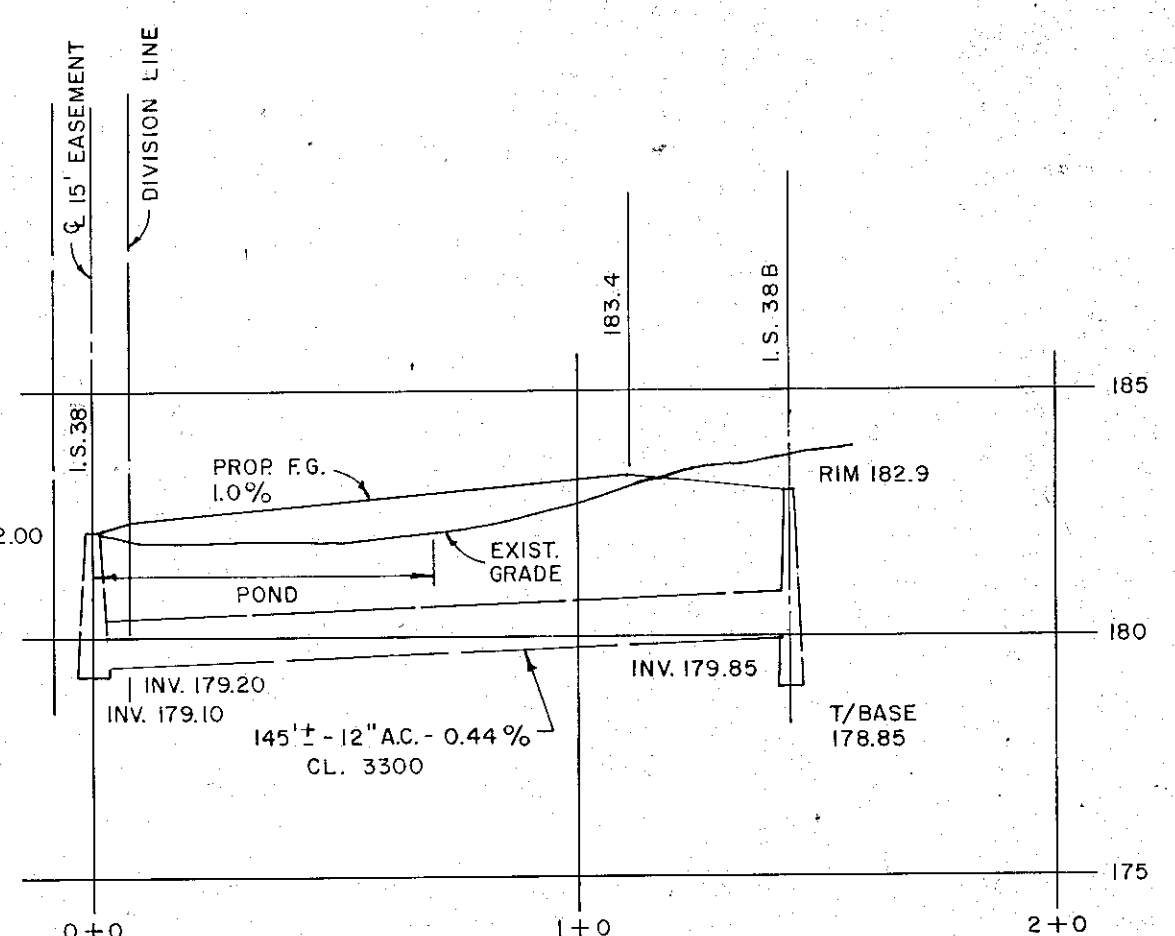
VICINITY SKETCH
(SCALE 1" = 2000')



TYPICAL LOT LAYOUT
(NOT TO SCALE)



- ~ NOTES ~
- 1 - LOT NUMBERS TO BE USED AS STREET NUMBERS.
 - 2 - EXISTING SANITARY SEWER SHOWN DESIGNED AND CONSTRUCTION SUPERVISED BY J. KENNETH FRASER AND ASSOCIATES.
 - 3 - BENCH MARK - TOP OF NUT POINT OF ARROW ON HYDRANT SOUTH SIDE BEACON ROAD EL. 185.12 (SEE PLAN)
 - 4 - COUNTOUR INTERVAL - ONE FT.
 - 5 - EASEMENT SHOWN TO BE CONVEYED TO TOWN OF BETHLEHEM

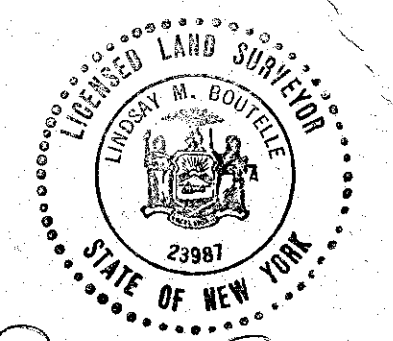


LANDS OF ABCO BUILDERS, INC. "BICENTENNIAL WOODS"

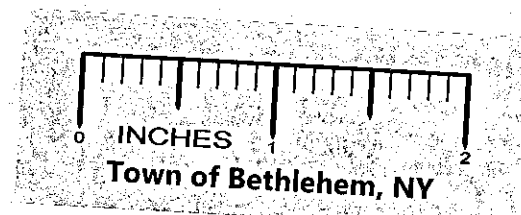
ROAD

PLANNING BOARD APPROVAL
TOWN OF BETHLEHEM
ALBANY COUNTY, NEW YORK
FINAL PLAT APPROVAL
When signed by the duly authorized officer of the Planning Board, this endorsement constitutes final Approval of this Plat.
Signed William R. Weber
Title CHAIRMAN
Date AUG 16 1978
See also Certificate of Approval of Final Plat No. 23-F

ALBANY COUNTY HEALTH DEPARTMENT APPROVAL



Lindsay M. Boutelle
LINDSAY M. BOUTELLE
LICENSE NO. 23987



MAP OF
"KILWORTH"
PROPERTY OF
D. LEE AND SHARYN R. MILLER

TOWN OF BETHLEHEM ALBANY COUNTY
NEW YORK FEB. 10, 1978
SCALE: 1" = 40' REVISION NO. 1

SURVEY AND MAP BY
EDWARD W. BOUTELLE AND SON
CIVIL ENGINEERS
SURVEYORS
DELMAR
N. Y.