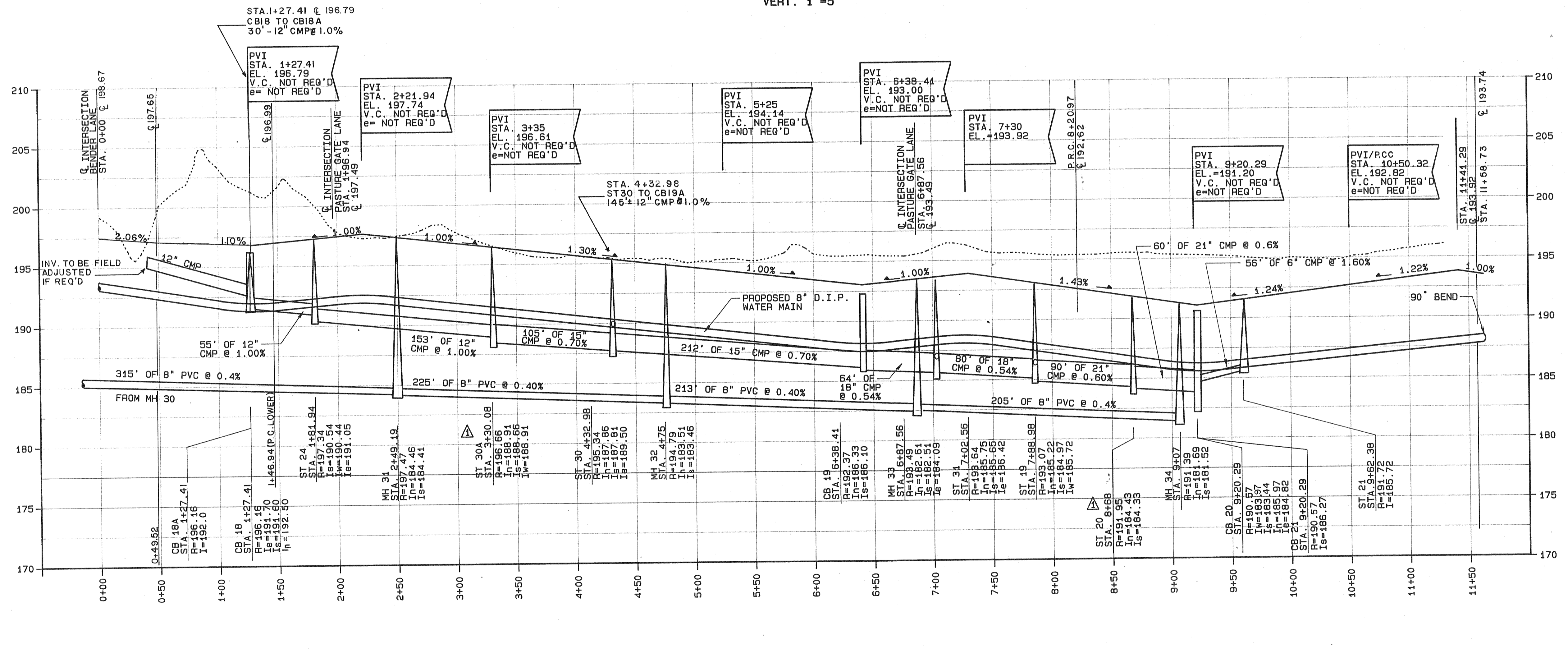


PROFILE OF SAGE LANE

SCALE: HORIZ. 1"=50'
VERT. 1"=5'



PROFILE OF STONEWALL LANE

SCALE: HORIZ. 1"=50'-0"
VERT. 1"=5'-0"

NOTES

ALL CONSTRUCTION DISTURBANCES ON STATE OR PRIVATE LAND TO BE RESTORED BY CONTRACTOR.

NOTE: SEWER LINES ARE TO BE INSTALLED UNDER THE SUPERVISION OF A NEW YORK STATE LICENSED PROFESSIONAL ENGINEER. ENGINEER SHALL SUBMIT A CERTIFICATE STATING THAT THE CONSTRUCTED FACILITIES HAVE BEEN CONSTRUCTED IN ACCORDANCE WITH THE APPROVED PLANS. CERTIFICATION MUST BE RECEIVED BY THE ALBANY COUNTY HEALTH DEPARTMENT WITHIN SIXTY (60) DAYS FROM THE COMPLETION OF CONSTRUCTION.

NOTE: WATER QUALITY-TYPE PIPE MATERIAL MUST BE UTILIZED FOR SANITARY AND STORM SEWERS IN AREAS WHERE A TEN FOOT HORIZONTAL SEPARATION DISTANCE FROM WATER MAINS CANNOT BE MAINTAINED.

NOTE: ALL WATER MAINS ARE TO BE INSTALLED, DISINFECTED, AND TESTED IN ACCORDANCE WITH AWWA STANDARD C601 OR OTHER METHOD ACCEPTABLE TO THE ALBANY COUNTY HEALTH DEPARTMENT.

UNAUTHORIZED ALTERATIONS OR ADDITIONS TO THIS DOCUMENT IS A VIOLATION OF SECTION 7208 SUBDIVISION 2 OF THE NEW YORK STATE EDUCATION LAW

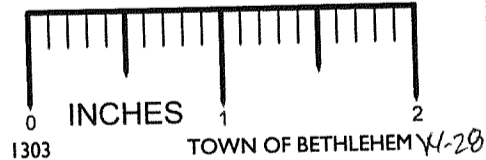
REVISIONS

DATE	BY	DESCRIPTION	SYMBOL
4/87	JB	MOVE ST 20, ADD ST30A	△
11/87	JB	REVISED PER TOWN OF BETHLEHEM.	△
1/88	JB	FINAL REVISIONS	⊙

J. KENNETH FRASER AND ASSOCIATES, P.C.
CONSULTING ENGINEERS
RENSELAER, NEW YORK

R & R ASSOCIATES

THE MEADOWS SUBDIVISION



TOWN OF BETHLEHEM
NEW YORK

SCALE: AS NOTED



PROJ. ENG'R: JFB
DRAWN BY: HLW
ASSEMBLED BY: EJS
CHECKED BY: JKF

REF. NO. 238645.012
1990 H.L.A.P.H.

SHEET TITLE: PROFILE-
STONEWALL & SAGE LANE

DATE: JANUARY 1987 SHEET 12 OF 26

ALBANY COUNTY DEPARTMENT OF HEALTH
DIVISION OF ENVIRONMENTAL HEALTH SERVICES.

By direction of the Commissioner of Health, these plans are hereby approved. See first sheet for date and signature.