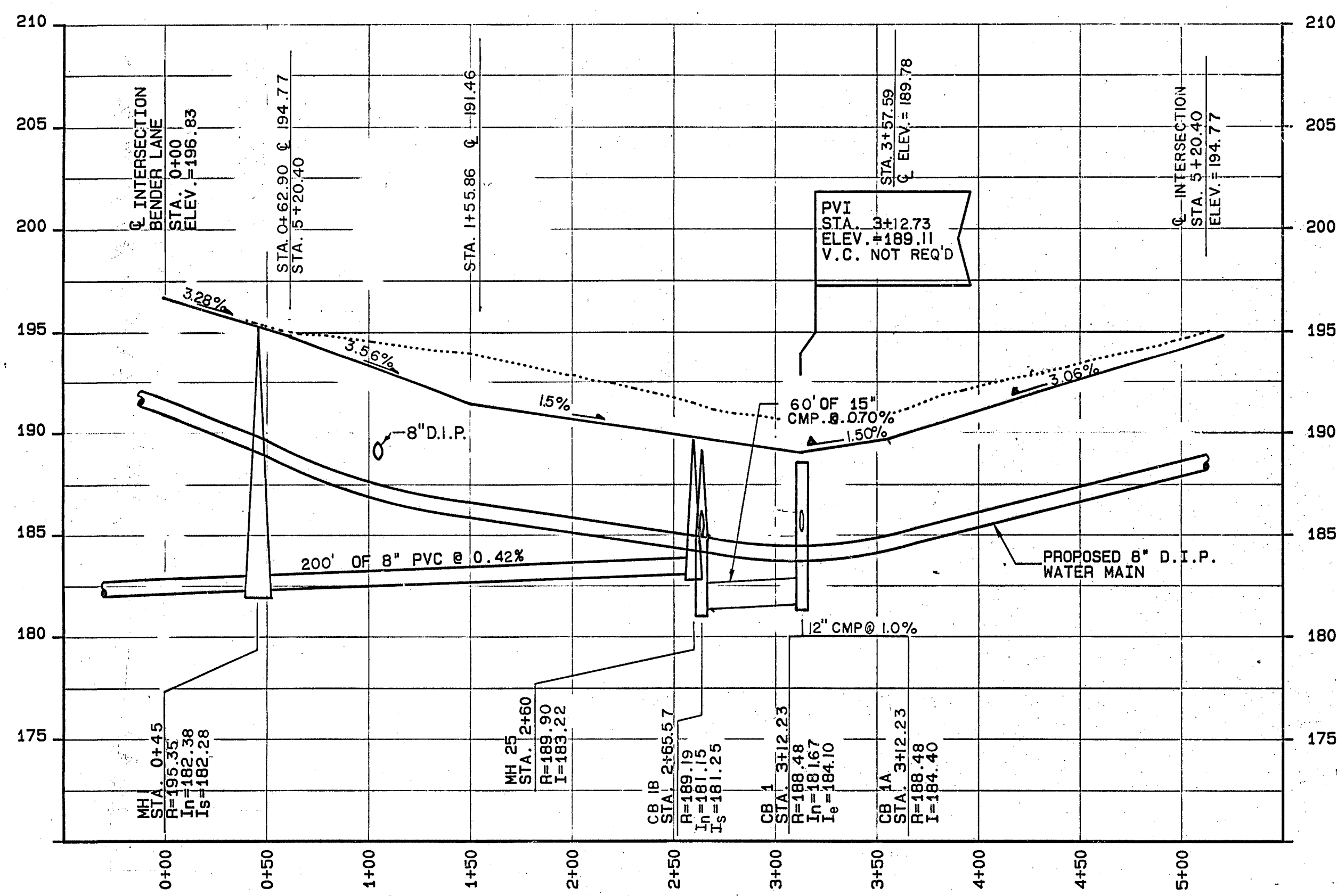


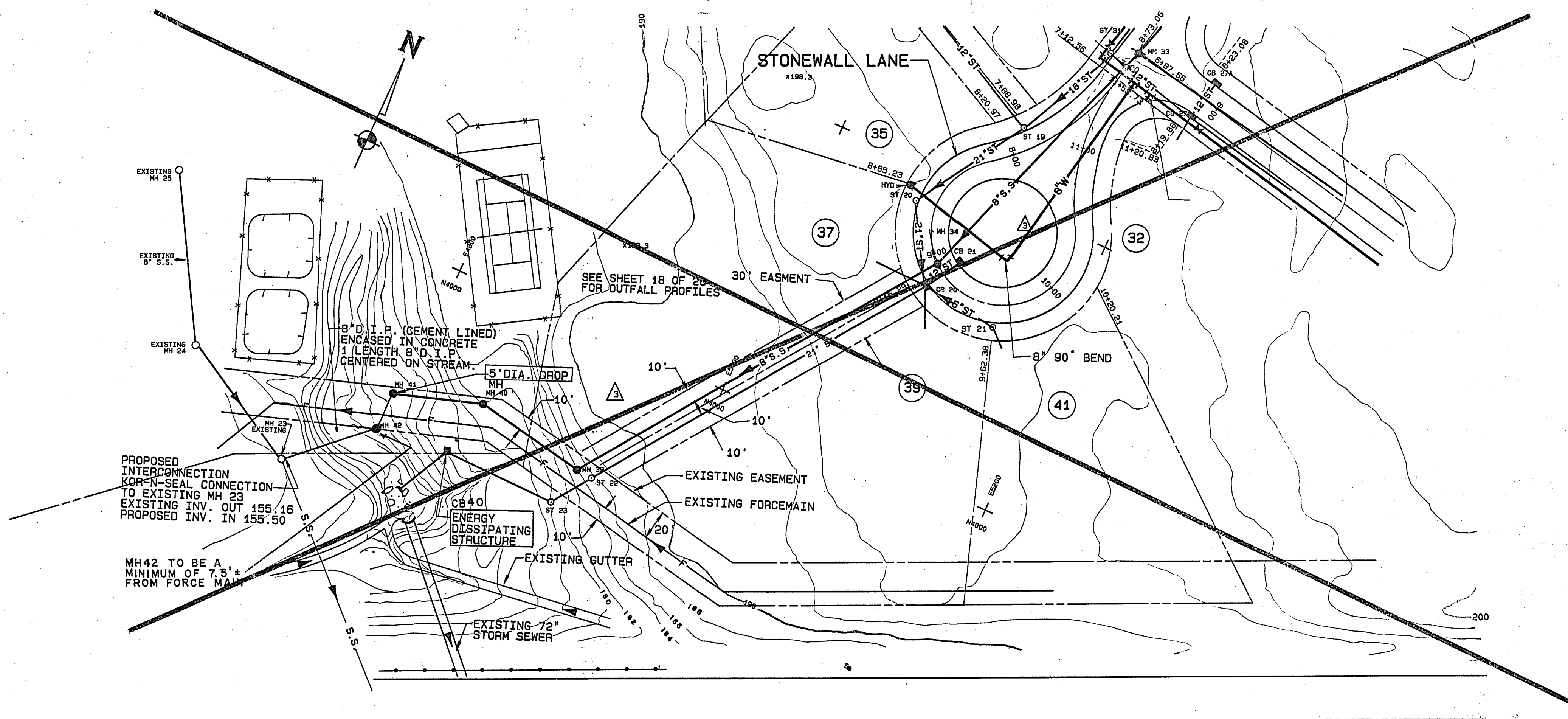
PROFILE OF \bar{C} THISTLE LANE

SCALE: HORIZ. 1" = 50'
VERT. 1" = 5'



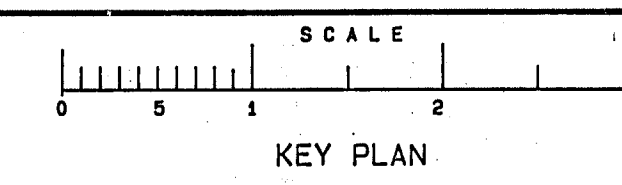
\bar{C} PROFILE - FOXFIRE LANE

SCALE: HORIZ. 1" = 50'
VERT. 1" = 5'



PLAN - STONEWALL LANE UTILITY OUTFALLS

SCALE: 1" = 50'



NOTES
ALL CONSTRUCTION DISTURBANCES ON STATE OR PRIVATE LAND TO BE RESTORED BY CONTRACTOR
NOTE: SEWER LINES ARE TO BE INSTALLED UNDER THE SUPERVISION OF A NEW YORK STATE LICENSED PROFESSIONAL ENGINEER. ENGINEER SHALL SUBMIT A CERTIFICATE STATING THAT THE CONSTRUCTED FACILITIES HAVE BEEN CONSTRUCTED IN ACCORDANCE WITH THE APPROVED PLANS. CERTIFICATION MUST BE RECEIVED BY THE ALBANY COUNTY HEALTH DEPARTMENT WITHIN SIXTY (60) DAYS FROM THE COMPLETION OF CONSTRUCTION.
NOTE: WATER QUALITY-TYPE PIPE MATERIAL MUST BE UTILIZED FOR SANITARY AND STORM SEWERS IN AREAS WHERE A TEN FOOT HORIZONTAL SEPARATION DISTANCE FROM WATER MAINS CANNOT BE MAINTAINED.
NOTE: ALL WATER MAINS ARE TO BE INSTALLED, DISINFECTED, AND TESTED IN ACCORDANCE WITH AWWA STANDARD C901 OR OTHER METHOD ACCEPTABLE TO THE ALBANY COUNTY HEALTH DEPARTMENT.
UNAUTHORIZED ALTERATIONS OR ADDITIONS TO THIS DOCUMENT IS A VIOLATION OF SECTION 209 SUBDIVISION 2 OF THE NEW YORK STATE EDUCATION LAW

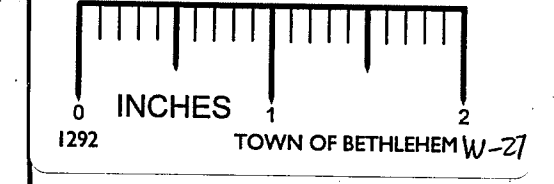
REVISIONS			
DATE	BY	DESCRIPTION	SYMBOL
11/25/87	JFB	WATER, SANITARY SEWER AND STORM SEWER REVISED PER TOWN OF BETHLEHEM	(A)
1/88	JFB	FINAL REVISIONS	(B)
12/89	JFB	UTILITIES EDITED PER FINAL GRADING	
3/12/90	JFB	FINAL REVISIONS	NONE
4/19/90	JFB	DOH EDITS	NONE

J. KENNETH FRASER
AND ASSOCIATES, P.C.
CONSULTING ENGINEERS
RENSSELAER, NEW YORK

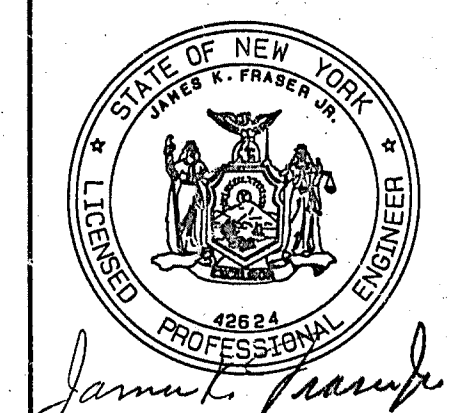
R & R
ASSOCIATES

THE MEADOWS
SUBDIVISION

TOWN OF BETHLEHEM
NEW YORK



SCALE: AS NOTED



PROJ. ENG'R: JFB
DRAWN BY: HLW
ASSEMBLED BY: EJS
CHECKED BY: JKF

REF. NO. 238645.017

SHEET TITLE: PROFILE - THISTLE LANE, STORM SEWER EASEMENT

DATE: JANUARY 1987 SHEET 17 OF 26