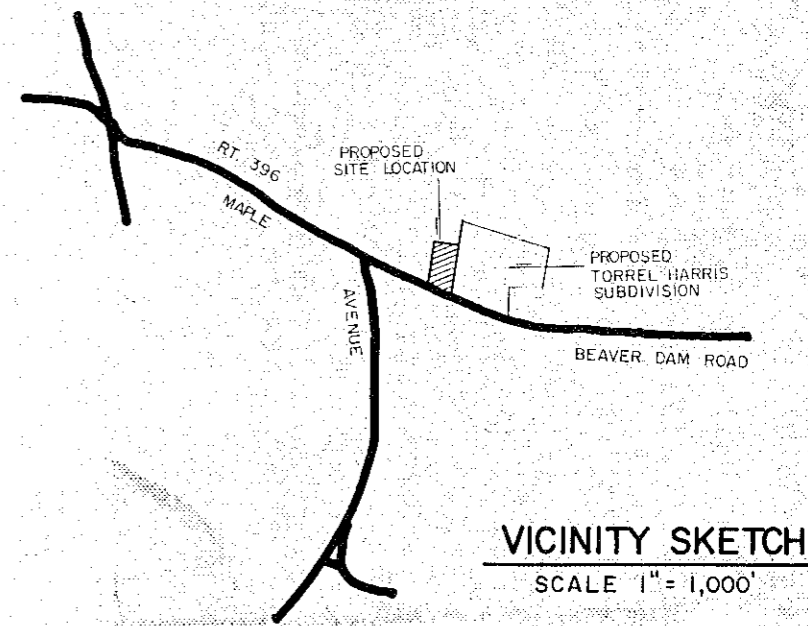
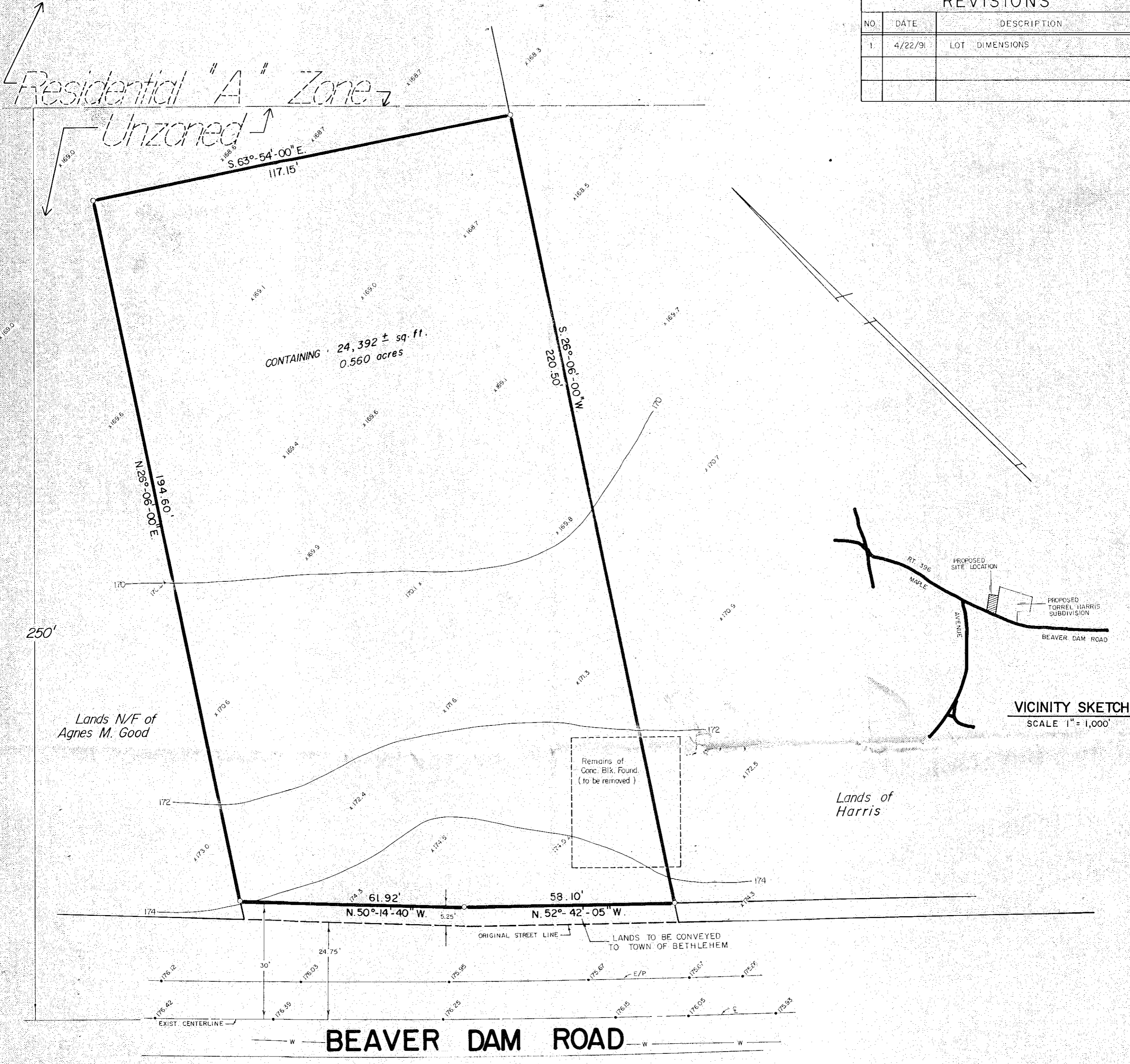


REVISIONS		
NO.	DATE	DESCRIPTION
1.	4/22/91	LOT DIMENSIONS

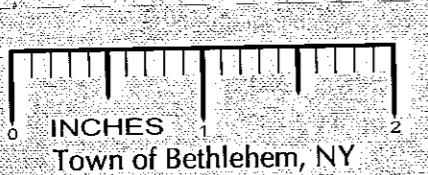


GENERAL NOTES

BENCH MARK: TOP OF NUT AT POINT OF ARROW ON HYDRANT LOCATED AT THE SOUTH WEST CORNER OF THE INTERSECTION OF ROUTES 396 & 9W (ELEV. 180.53) USGS DATUM

PLAN TO BE SUBMITTED TO ALBANY COUNTY HEALTH DEPARTMENT FOR APPROVAL OF SEPTIC TANK AND TILE FIELD INSTALLATIONS

FOUNDATION DRAINS TO BE DRAINED TO A SEEPAGE PITS TO BE LOCATED AT THE REAR OF THE LOT



PLANNING BOARD
TOWN OF BETHLEHEM
ALBANY COUNTY, NEW YORK

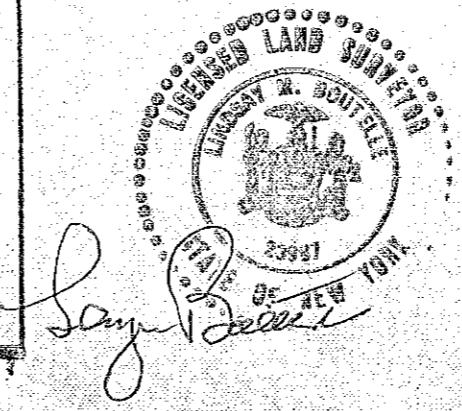
FINAL PLAT APPROVAL

When signed by the duly authorized officer of the Planning Board, this endorsement constitutes final approval of this Plat.

Signed *Walter H. Barr*
Title **CHAIRMAN**

Date **MAY 16 1991**

See also Certificate of Approval of Final Plat No. **142-F**



MAP OF PROPOSED ONE LOT SUBDIVISION FOR RONALD J. WILLIAMS	
TOWN <i>Bethlehem</i>	COUNTY <i>Albany</i>
STATE <i>New York</i>	DATE <i>Dec 13, 1990</i>
SCALE <i>1\"/> </i>	REVISION NO. <i>1</i>
MAP PREPARED BY EDWARD W. BOUTELLE and SON, CIVIL ENGINEERS & SURVEYORS, DELMAR, NEW YORK	
SHEET NO. <i>1</i>	FILE NO. <i>142-F</i>