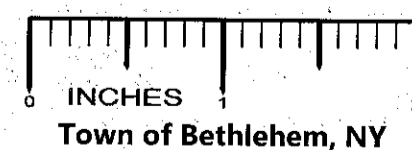
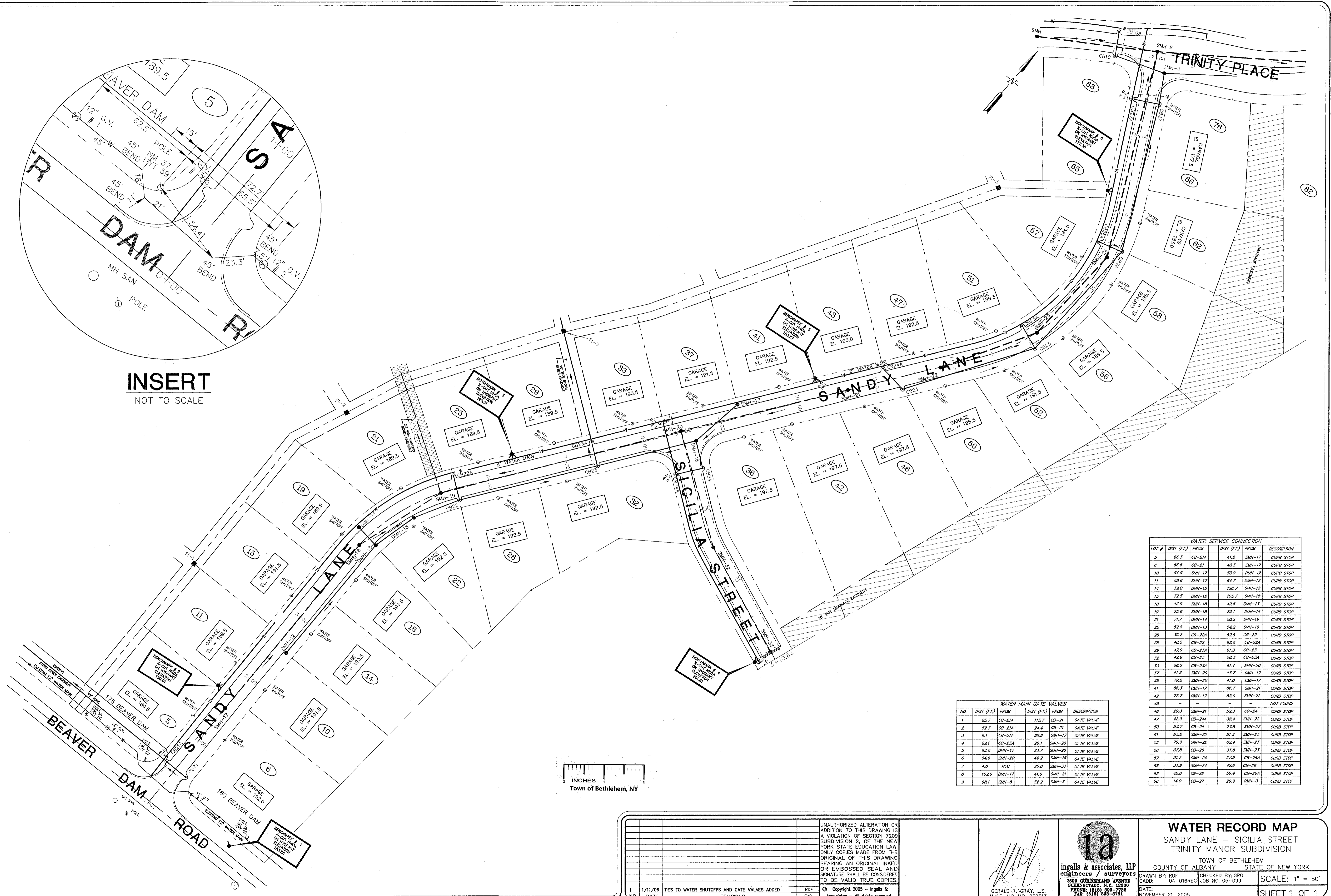


INSERT
NOT TO SCALE



| WATER SERVICE CONNECTION | | | | | |
|--------------------------|------------|--------|------------|--------|-------------|
| LOT # | DIST (FT.) | FROM | DIST (FT.) | FROM | DESCRIPTION |
| 5 | 66.3 | CB-21A | 41.2 | SMH-17 | CURB STOP |
| 6 | 66.6 | CB-21 | 40.3 | SMH-17 | CURB STOP |
| 10 | 54.5 | SMH-17 | 53.9 | DMH-12 | CURB STOP |
| 11 | 58.6 | SMH-17 | 64.7 | DMH-12 | CURB STOP |
| 14 | 39.0 | DMH-12 | 126.7 | SMH-18 | CURB STOP |
| 15 | 72.5 | DMH-12 | 105.7 | SMH-18 | CURB STOP |
| 18 | 43.9 | SMH-18 | 49.6 | DMH-13 | CURB STOP |
| 19 | 25.6 | SMH-18 | 23.1 | DMH-14 | CURB STOP |
| 21 | 71.7 | DMH-14 | 50.2 | SMH-19 | CURB STOP |
| 22 | 52.8 | DMH-13 | 54.2 | SMH-19 | CURB STOP |
| 25 | 35.2 | CB-22A | 52.6 | CB-22 | CURB STOP |
| 26 | 48.5 | CB-22 | 62.5 | CB-22A | CURB STOP |
| 29 | 47.0 | CB-23A | 61.3 | CB-23 | CURB STOP |
| 32 | 42.8 | CB-23 | 58.3 | CB-23A | CURB STOP |
| 33 | 56.2 | CB-23A | 61.4 | SMH-20 | CURB STOP |
| 37 | 41.3 | SMH-20 | 43.7 | DMH-17 | CURB STOP |
| 39 | 79.2 | SMH-20 | 41.0 | DMH-17 | CURB STOP |
| 41 | 56.3 | DMH-17 | 86.7 | SMH-21 | CURB STOP |
| 42 | 72.7 | DMH-17 | 82.0 | SMH-21 | CURB STOP |
| 43 | - | - | - | - | NOT FOUND |
| 46 | 29.3 | SMH-21 | 52.3 | CB-24 | CURB STOP |
| 47 | 42.9 | CB-24A | 38.4 | SMH-22 | CURB STOP |
| 50 | 53.7 | CB-24 | 23.8 | SMH-22 | CURB STOP |
| 51 | 83.2 | SMH-22 | 51.3 | SMH-23 | CURB STOP |
| 52 | 78.9 | SMH-22 | 62.4 | SMH-23 | CURB STOP |
| 56 | 37.8 | CB-25 | 33.8 | SMH-23 | CURB STOP |
| 57 | 31.2 | DMH-16 | 27.9 | CB-26A | CURB STOP |
| 58 | 33.9 | SMH-24 | 42.6 | CB-26 | CURB STOP |
| 62 | 42.8 | CB-26 | 56.4 | CB-26A | CURB STOP |
| 65 | 14.0 | CB-27 | 29.9 | DMH-3 | CURB STOP |

| WATER MAIN GATE VALVES | | | | | |
|------------------------|------------|--------|------------|--------|-------------|
| NO. | DIST (FT.) | FROM | DIST (FT.) | FROM | DESCRIPTION |
| 1 | 85.7 | CB-21A | 115.7 | CB-21 | GATE VALVE |
| 2 | 52.7 | CB-21A | 24.4 | CB-21 | GATE VALVE |
| 3 | 61.1 | CB-21A | 95.9 | SMH-17 | GATE VALVE |
| 4 | 89.1 | CB-23A | 28.1 | SMH-20 | GATE VALVE |
| 5 | 93.5 | DMH-17 | 23.7 | SMH-20 | GATE VALVE |
| 6 | 54.6 | SMH-20 | 49.2 | DMH-16 | GATE VALVE |
| 7 | 4.0 | HYD | 20.0 | SMH-33 | GATE VALVE |
| 8 | 102.6 | DMH-17 | 41.6 | SMH-21 | GATE VALVE |
| 9 | 68.1 | SMH-8 | 52.2 | DMH-3 | GATE VALVE |

| | | | |
|-----|---------|---|-----|
| NO. | DATE: | DESCRIPTION: | BY: |
| 1 | 1/11/06 | CHANGES TO WATER SHUTOFFS AND GATE VALVES ADDED | RFJ |
| | | REVISIONS | |

UNAUTHORIZED ALTERATION OR ADDITION TO THIS DRAWING IS A VIOLATION OF SECTION 7209 SUBDIVISION 2, OF THE NEW YORK STATE EDUCATION LAW. ONLY COPIES MADE FROM THE ORIGINAL OF THIS DRAWING BEARING AN ORIGINAL INKED OR EMBOSSED SEAL AND SIGNATURE SHALL BE CONSIDERED TO BE VALID TRUE COPIES.

© Copyright 2005 - Ingalls & Associates - All rights reserved

[Signature]
GERALD R. GRAY, L.S.
N.Y.S. LIC. NO. 950513

1a
ingalls & associates, LLP
engineers / surveyors
8803 GULDERLAND AVENUE
SCHENECTADY, N.Y. 12306
PHONE: (518) 389-7795
FAX: (518) 389-3781

WATER RECORD MAP
SANDY LANE - SICILIA STREET
TRINITY MANOR SUBDIVISION

TOWN OF BETHLEHEM
COUNTY OF ALBANY STATE OF NEW YORK

DRAWN BY: RFJ
CHECKED BY: GRG
CADD: C4-016REC
JOB NO. 05-099

DATE: NOVEMBER 21, 2005

SCALE: 1" = 50'

SHEET 1 OF 1