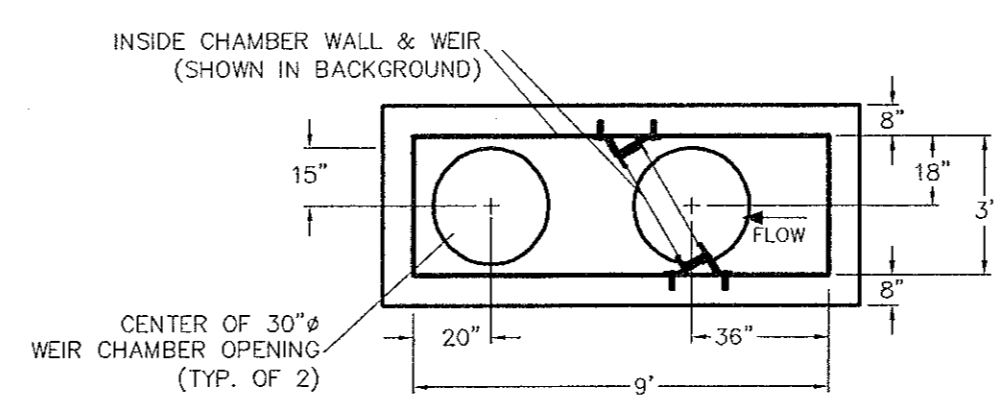
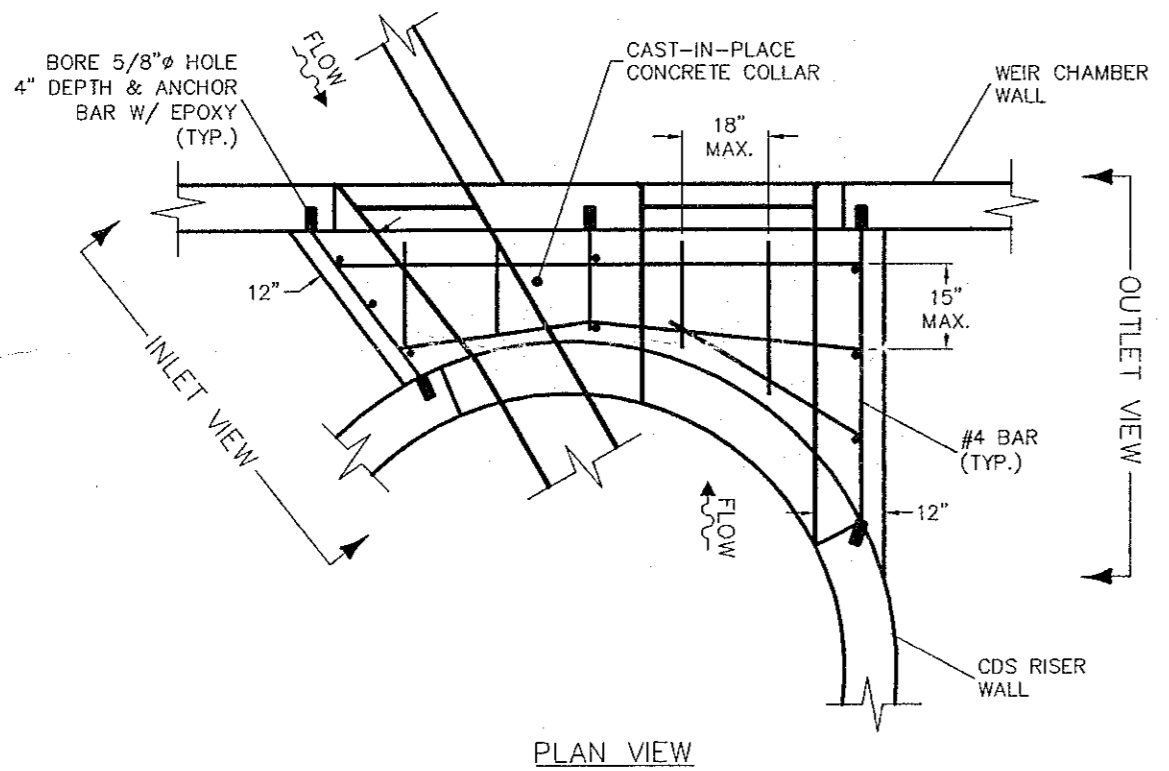
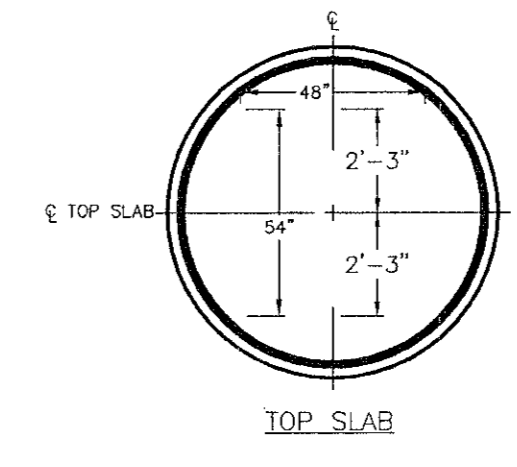
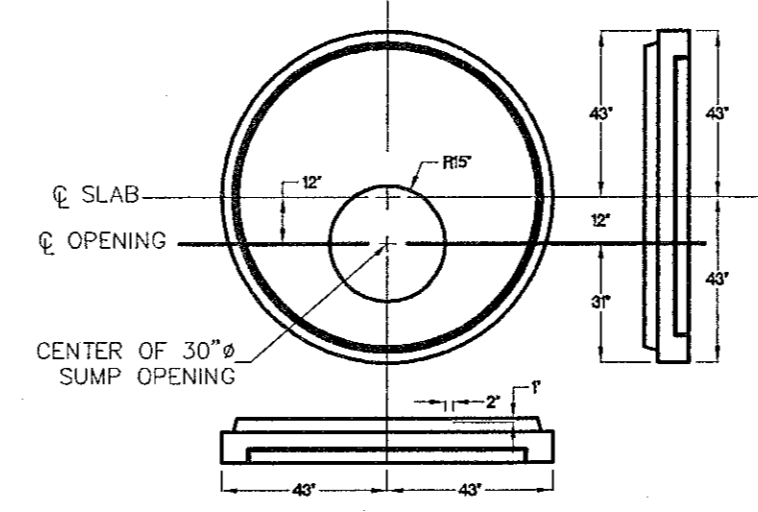
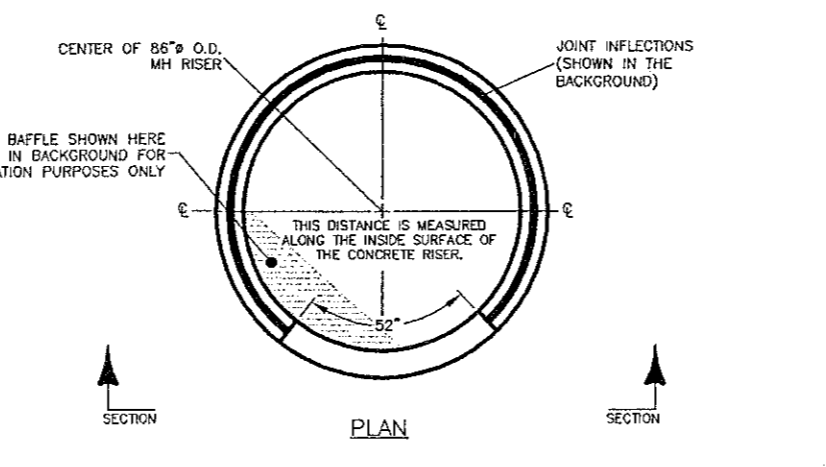
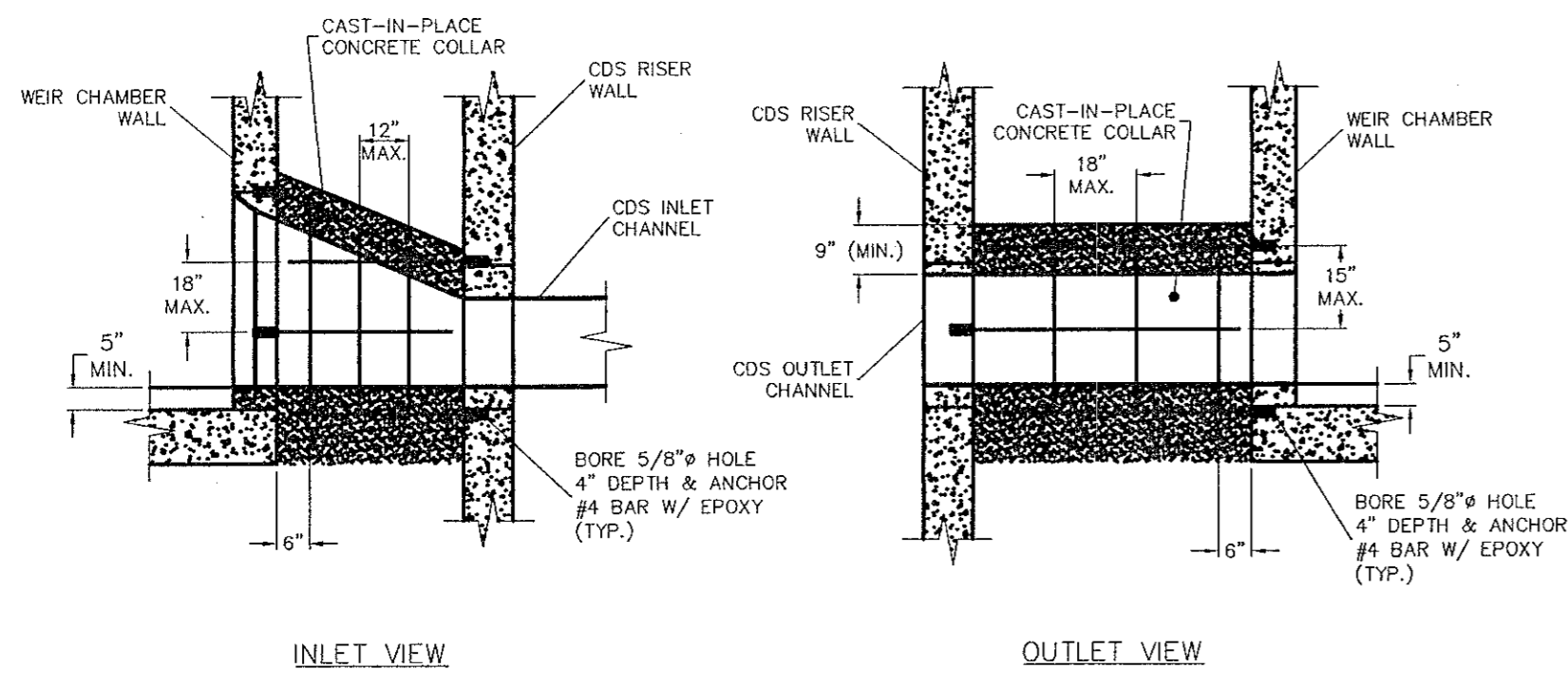


CONSTRUCTION NOTES:

1. ALL ANCHOR BOLTS TO BE WEDGE-ALL $\frac{3}{8}$ " x $3\frac{1}{2}$ " STAINLESS STEEL AND INSTALLED PER THE MANUFACTURER'S REQUIREMENTS.
2. FIBERGLASS COMPONENTS WILL BE ATTACHED TO THE ANCHOR BOLTS USING THE REQUIRED STAINLESS STEEL WASHERS AND $\frac{3}{8}$ " LOCK WASHERS WITH HEX NUT.
3. USE SIKA GROUT 212 TO FILL ALL HOLES NOT USED.
4. ALL PRECAST IS TO BE MANUFACTURED ACCORDING TO ASTM C478 SPECIFICATIONS.
5. ALL BYPASS WEIR STRUCTURES ARE TO BE MANUFACTURED AS PER ASTM C478 SPECIFICATIONS.
6. A NYS LICENSED P.E. SHALL DESIGN THE ABOVE STRUCTURAL COMPONENTS. SHOP DRAWINGS SHALL BE APPROVED BY AN OWNER DESIGNATED P.E. AND THE TOWN OF BETHLEHEM.

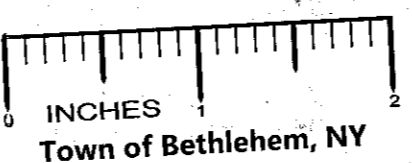


1. THE WEIR CHAMBER WILL BE CONSTRUCTED BY THE PRECAST MANUFACTURING COMPANY AS PER THE ASTM C478 SPECIFICATIONS.
 2. THE DIVERSION WEIR WILL BE CONSTRUCTED FROM ALUMINUM & STAINLESS STEEL SECTIONS. THE ANGLED HOLD DOWN BRACKETS WILL BE STAINLESS STEEL AND BOLTED INTO THE PRECAST WALL WITH SUITABLE STAINLESS STEEL ANCHORS. THE WEIR WALL CONSIST OF 6" WIDE ALUMINUM SECTIONS.
 3. THE CONTRACTOR SHALL PROVIDE A SECONDARY CONCRETE POUR UPSTREAM AND DOWNSTREAM OF THE WEIR TO FACILITATE FLOW WITHIN THE DIVERSION WEIR CHAMBER AND MINIMIZE THE LIKELIHOOD OF SEDIMENTATION. THE BENCHING DOWNSTREAM OF THE WEIR SHALL BE SHALL BE A MINIMUM OF 1/2 THE HEIGHT OF THE CDS OUTLET.
- INDICATES MOST OF THE LOCATIONS WHERE CONCRETE IS TO BE POURED IN THE FIELD.



- NOTES:**
1. ALL ANCHORS IN THE PRE-CAST CONCRETE STRUCTURES ARE WEDGE-ALL STAINLESS STEEL ANCHOR BOLTS ($\frac{3}{8}$ " x $3\frac{1}{2}$ "). EACH ANCHOR IS INSTALLED BY DRILLING A $\frac{3}{8}$ " DIA. HOLE INTO THE CONCRETE WALL, DRIVING THE BOLT INTO THE WALL AT A MINIMUM DEPTH OF 1 $\frac{1}{4}$ ". THE FIBERGLASS COMPONENTS WILL THEN BE ATTACHED USING THE REQUIRED STAINLESS STEEL WASHER AND $\frac{3}{8}$ " LOCK WASHERS WITH HEX NUTS. ALL CDS INSTALLATIONS ARE TO BE SUPERVISED BY CDS PERSONNEL IN ORDER TO GUARANTEE THE QUALITY OF THE INSTALLATION.
 2. SHOULD ANY DRILLED HOLES NEED TO BE ABANDONED, BLOW OUT, AND USE SIKA 212 GROUT TO COMPLETELY FILL IN THE VOID.
 3. THERE WILL BE NO NEED TO ENTER THE CDS UNITS DURING THE CLEANING AND MAINTENANCE PROCEDURES. CLEANING WILL BE BY A VACUUM TRUCK AND BASKET SYSTEM. NEITHER OF THESE PROCESSES REQUIRE ENTRY INTO THE MANHOLE STRUCTURE. IF BY CHANCE SOMEONE NEEDS TO ENTER INTO THE MANHOLE, THE OSHA CONFINED SPACE ENTRY PROCEDURES LOCATED IN THE O&M MANUAL WILL APPLY.
 4. ALL FRAMES AND COVERS TO BE INSTALLED OVER THE 30" DIAMETER OPENINGS SHALL BE A NEENAH 1559-2000 FRAME WITH A 1559-5001 COVER, A CAMPBELL 1203 FRAME AND COVER, OR EQUAL. COVERS ARE TO HAVE TWO (2) PENETRATING PICKHOLES APPROXIMATELY 1 $\frac{1}{2}$ " WIDE x 2" LONG.
 5. ALL FRAMES AND COVERS TO BE INSTALLED OVER THE 24" DIAMETER OPENINGS SHALL BE A NEENAH 1556 FRAME WITH A 1556-5001 COVER, CAMPBELL 1009 FRAME AND COVER, OR EQUAL. COVERS ARE TO HAVE TWO (2) PENETRATING PICKHOLES APPROXIMATELY 1 $\frac{1}{2}$ " WIDE x 2" LONG.
 6. THE SCREEN ASSEMBLY IS FABRICATED FROM TYPE 316 STAINLESS STEEL AND FASTENED WITH TYPE 316 STAINLESS STEEL FASTENERS THAT ARE EASILY REMOVED AND/OR REPLACED WITH CONVENTIONAL HAND TOOLS. THE DAMAGED SCREEN ASSEMBLY SHOULD BE REPLACED WITH THE NEW SCREEN ASSEMBLY PLACED IN THE SAME ORIENTATION AS THE ONE THAT WAS REMOVED.
 7. ALL HATCHES AND STRUCTURES MUST HAVE H-20 WHEEL LOADING CAPABILITIES. HATCHES SHALL HAVE HYDRAULIC LIFTING ARMS, THE ABILITY TO BE LOCKED, AND SELF DRAINING CHANNELS AROUND THE EDGE OF THE LID (MANUFACTURED BY SIKAFLO CASTINGS OR HOLIDAY). THE SIZE OF THE HATCH IS PROVIDED ON THE ACCOMPANYING DETAILS FOR EACH UNIT.

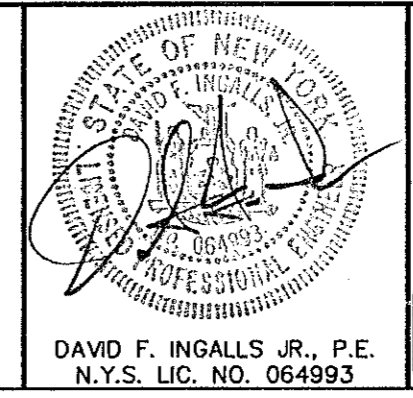
- NOTES:**
1. THE PRECASTER SHALL DESIGN THE ABOVE STRUCTURE COMPONENTS IN ACCORDANCE WITH ASTM C478. DIMENSION OF WALL THICKNESS AND JOINTS SHALL BE CONSISTENT WITH THE PRECASTER'S STANDARDS.
 2. CONCRETE SHALL HAVE A MINIMUM 28-DAY COMPRESSIVE STRENGTH OF 4000 PSI.
 3. STEEL REINFORCEMENT SHALL BE GRADE 60 DEFORMED BARS CONFORMING TO ASTM A615.



| NO. | DATE | REVISIONS | BY: |
|-----|-------|--|-----|
| 2 | 12/05 | REVISED PER TOWN COMMENTS DATED 12-9-05 | SDP |
| 1 | 11/05 | REVISED PER TOWN COMMENTS DATED 10-12-05 | SDP |

UNAUTHORIZED ALTERATION OR ADDITION TO THIS DRAWING IS A VIOLATION OF SECTION 7209 SUBDIVISION 2, OF THE NEW YORK STATE EDUCATION LAW. ONLY COPIES MADE FROM THE ORIGINAL OF THIS DRAWING BEARING AN ORIGINAL INKED OR EMBOSSED SEAL AND SIGNATURE SHALL BE CONSIDERED TO BE VALID TRUE COPIES.

© Copyright 2005 - Ingalls & Associates - All rights reserved.



ingalls & associates, LLP
engineers / surveyors
2603 GULDBRAND AVENUE
SCENECTADY, N.Y. 12306
PHONE: (518) 393-7725
FAX: (518) 393-3761

CDS #3 DETAILS
TRINITY MANOR SUBDIVISION - PHASE IV
ROSEWOOD HOME BUILDERS
TOWN OF BETHLEHEM
COUNTY OF ALBANY STATE OF NEW YORK

DRAWN BY: SDP CHECKED BY: D.F.I.
CADD/CDS REV 12-05.DWG JOB NO. 04-016
DATE: SEPTEMBER 8, 2005 SCALE: N.T.S.
SHEET 7

FOR INFORMATION ONLY
NOT FOR CONSTRUCTION