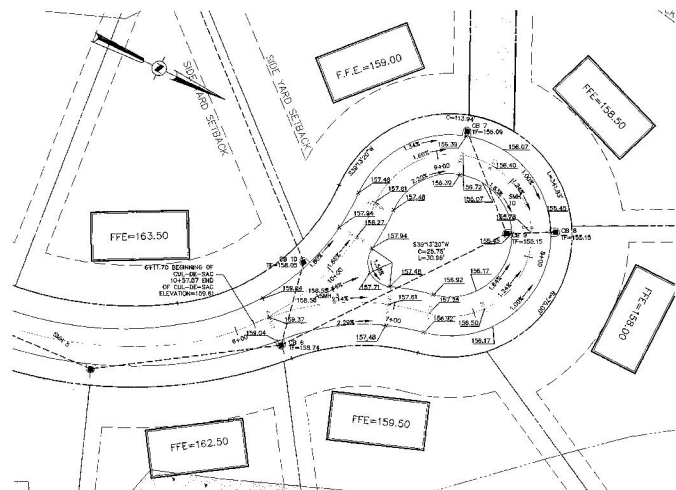
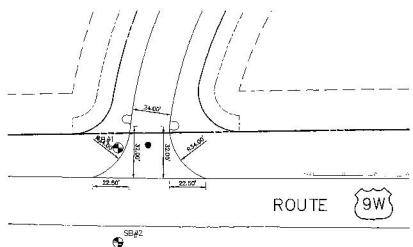


1 INTERSECTION DETAIL
INT SCALE: 1" = 30'
CROSS REFERENCE: NONE



2 CUL-DE-SAC DETAIL
INT SCALE: 1" = 30'
CROSS REFERENCE: NONE



3 ROUTE 9W & OTT'S THOROUGHBRID CIRCLE INTERSECTION GEOMETRY
INT SCALE: 1" = 30'
CROSS REFERENCE: NONE

PLANNING BOARD
TOWN OF BETHLEHEM
ALBANY COUNTY, NEW YORK
FINAL PLAT APPROVAL
WHEN SIGNED BY THE BOARD AND APPROVED FOR THE PLANNING BOARD, THE ENGINEER AND DRAFTSMAN SHALL BE RESPONSIBLE FOR THIS PLAT.
SIGNED: *Robert D. Malle*
TITLE: *Chairman*
DATE: *7/18/12*
SEE ALSO CERTIFICATE OF APPROVAL OF FINAL PLAT NO. *2012-002*
C.T. MALE ASSOCIATES, P.C.
PRINTED AND ISSUED

DATE	REVISIONS RECORD/DESCRIPTION	DRAFTER	CHECKER	APPR.	UNAPPROVED REVISION OR APPROVED BY RECORDING OFFICE OR A REVISION BY THE PLANNING BOARD
02/21/04	1ST PER 12/12/2003 TOWN COMMENT LETTER	JMD	FSF	FSF	
02/20/04	AS PER 12/12/2003 TOWN COMMENT LETTER	MAG	FSF	FSF	
02/24/04	AS PER NOVEMBER 27, 2004 COMMENT LETTER	MAG	FSF	FSF	
02/24/04	AS PER NOVEMBER 24, 2004 COMMENT LETTER	MAG	FSF	FSF	
02/19/05	AS PER JANUARY 29, 2005 COMMENT LETTER	MAG	FSF	FSF	
02/15/05	PRINTED SPOT GRADERS ON PLAN	MAG	FSF	FSF	
07/18/05	AS PER MARCH 17 & 25, 2005 COMMENT LETTER	MAG	FSF	FSF	



FINAL PLAT INTERSECTION DETAILS
TROUBARD ESTATES SUBDIVISION
TOWN OF BETHLEHEM, ALBANY COUNTY, NEW YORK
C.T. MALE ASSOCIATES, P.C.
90 CENTURY HILL DRIVE, P.O. BOX 322, LATHAM, NY 12110
607-786-7400 • FAX 607-786-7209
ARCHITECTURE & PLANNING ENGINEERING & CIVIL ENGINEERING ENVIRONMENTAL SERVICES • SURVEY & LAND INFORMATION SERVICES
INT
SHEET 9 OF 12
DWG. NO. 01-285