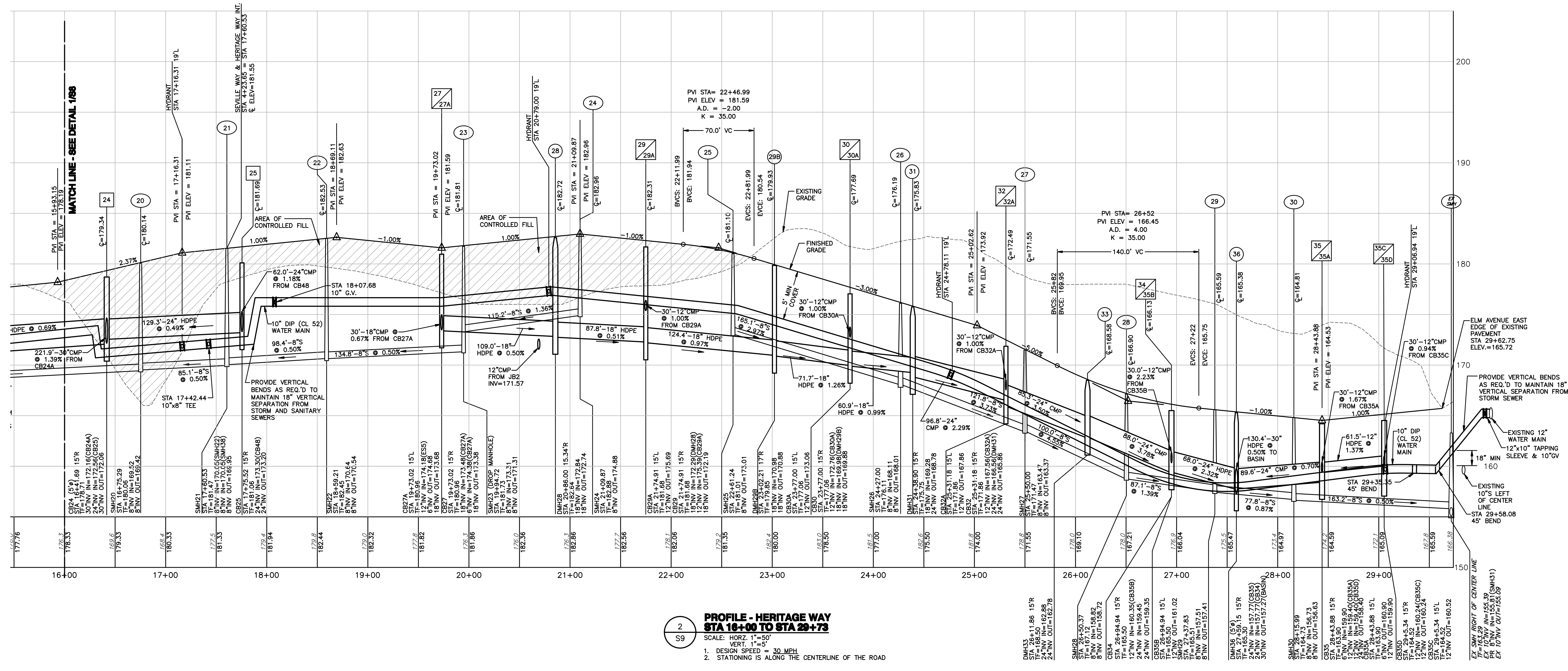


1 PLAN - HERITAGE WAY
STA 16+00 TO STA 29+73
SCALE: 1"=50'



2 PROFILE - HERITAGE WAY
STA 16+00 TO STA 29+73
SCALE: VERT. 1"=10'
HORIZ. 1"=40'

APPLICANT:
AUGUSTINE HOMES
1900 WESTERN AVENUE
ALBANY, NY 12203
PH: (518) 456-1010
FAX: (518) 456-1999

ALL RIGHTS RESERVED. COPY OR REPRODUCTION OF THIS PLAN OR ANY PORTION THEREOF IS PROHIBITED WITHOUT THE WRITTEN PERMISSION OF THE DESIGN ENGINEER, SURVEYOR OR ARCHITECT. ALTERATION OF THIS DRAWING, EXCEPT BY A LICENSED P.E. IS ILLEGAL. ANY ALTERATION BY A P.E. MUST BE INDICATED AND BEAR HIS SEAL, SIGNATURE AND DATE OF ALTERATION.

THE
Chazen
COMPANIES
Engineers/Surveyors
Planners
Environmental Scientists

CHAZEN ENGINEERING & LAND SURVEYING CO., P.C.
Delaware County Office: 21 Fox Street, P.O. Box 12601, Pottsville, PA 17854-1260
Capital District Office: 547 River Street, Troy, NY 12180, Phone: (518) 272-0055
Orange County Office: 306 Main Street, Newburgh, NY 12550, Phone: (845) 567-1133
North County Office: 100 Glen Street, Oneonta, NY 13827, Phone: (607) 821-0151

REV.	DATE	DESCRIPTION
8	9/15/08	REVISED PER TOWN DIVISION OF ENGINEERING COMMENTS
7	8/7/08	REVISED PER TOWN DIVISION OF ENGINEERING COMMENTS
6	6/13/08	REVISED PER TOWN 5/13/08 COMMENTS
5	02/26/08	GENERAL REVISIONS PER TOWN AND ACOE COMMENTS
4	9/27/07	REVISED PER TOWN DIVISION OF ENGINEERING COMMENTS
3	2/20/07	REVISED PROFILE
2	9/15/06	REVISED PER TOWN 07/12/06 COMMENTS
1	3/4/05	REVISED PER TOWN COMMENTS

ELM AVENUE EAST RESIDENTIAL DEVELOPMENT
**PLAN / PROFILE
HERITAGE WAY
STA 16+00 TO STA 29+73**
TOWN OF BETHLEHEM, ALBANY COUNTY, NEW YORK

drawn: CUB
checked: JML
date: 12/19/03
scale: AS NOTED
project no.: 30337.00
sheet no.: 59