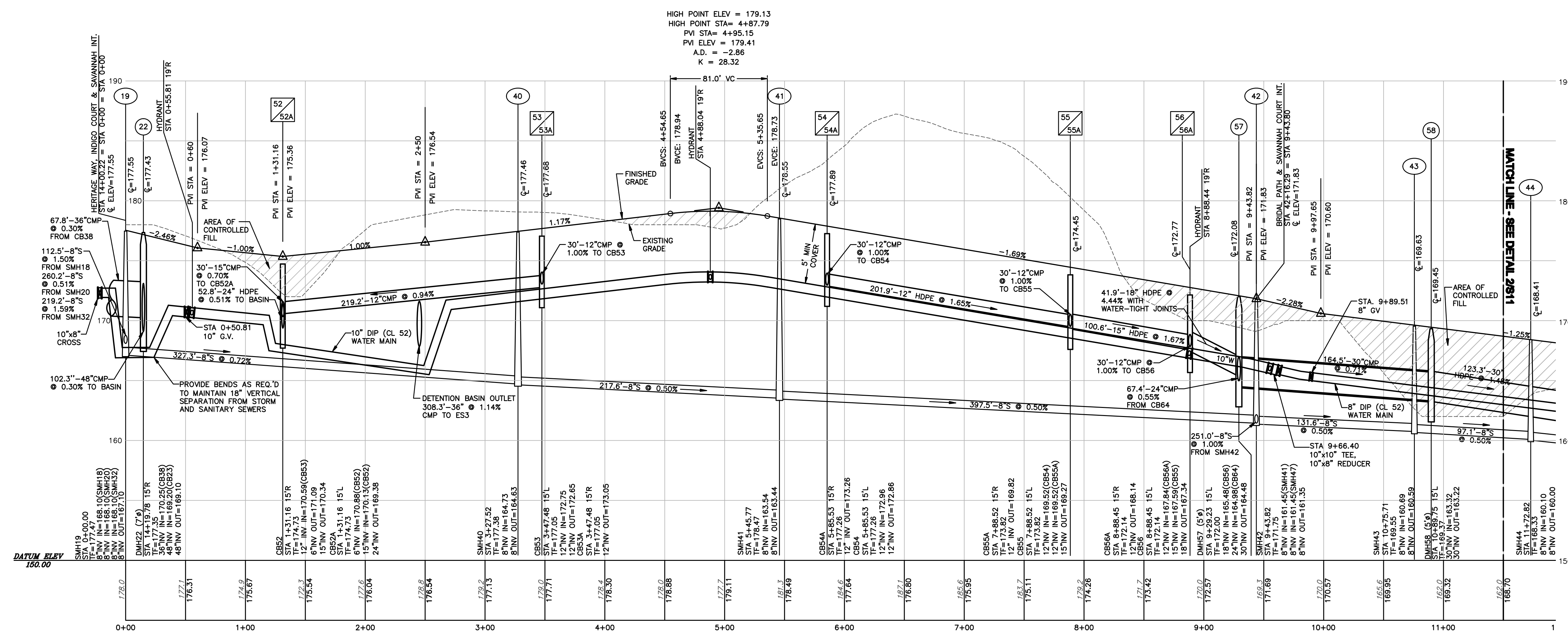


1
S10
PLAN - SAVANNAH COURT
STA 0+00 TO STA 11+00
SCALE: 1"=50'



2
S10
PROFILE - SAVANNAH COURT
STA 0+00 TO STA 11+00
SCALE: HORZ. 1"=50'

1. DESIGN SPEED = 30 MPH
2. STATIONING IS ALONG THE CENTERLINE OF THE ROAD

APPLICANT:
AMÉDORÉ HOMES
1900 WESTERN AVENUE
ALBANY, NY 12203
PH: (518) 456-1010
FAX: (518) 456-1999

ALL RIGHTS RESERVED. COPY OR REPRODUCTION OF THIS PLAN OR ANY PORTION THEREOF IS PROHIBITED WITHOUT THE WRITTEN PERMISSION OF THE DESIGN ENGINEER, SURVEYOR, OR ARCHITECT. ALTERATION OF THIS DRAWING BY A LICENSED P.E. IS ILLEGAL, UNLESS ALTERATION BY A P.E. MUST BE INDICATED AND BEAR HIS SEAL, SIGNATURE, AND DATE OF ALTERATION.

THE
Chazen
COMPANIES
Engineers/Surveyors
Planners
Environmental Scientists

CHAZEN ENGINEERING & LAND SURVEYING CO., P.C.

Dutchess County Office: 21 Fox Street, Poughkeepsie, New York 12601, Phone: (845) 434-3980
Capital District Office: 547 River Street, Troy, New York 12180, Phone: (518) 273-0055
Orange County Office: 306 Main Street, Newburgh, New York 12550, Phone: (845) 567-1133
North Country Office: 100 Glen Street, Saratoga Springs, New York 12861, Phone: (518) 812-0151

REV.	DATE	DESCRIPTION
8	6/19/09	REMOVED ALL WETLAND IMPACTS
7	9/15/08	REVISED PER TOWN DIVISION OF ENGINEERING COMMENTS
6	8/7/08	REVISED PER TOWN DIVISION OF ENGINEERING COMMENTS
5	6/13/08	REVISED PER TOWN 5/13/08 COMMENTS
4	02/26/08	GENERAL REVISIONS PER TOWN AND AECOM COMMENTS
3	9/27/07	REVISED PER TOWN 5/23/07 COMMENTS
2	9/15/06	REVISED PER TOWN 07/12/06 COMMENTS
1	3/4/05	REVISED PER TOWN COMMENTS

ELM AVENUE EAST RESIDENTIAL DEVELOPMENT

PLAN / PROFILE
SAVANNAH COURT
STA 0+00 TO STA 11+00

TOWN OF BETHLEHEM, ALBANY COUNTY, NEW YORK

drawn: CUB checked: JML
date: 12/19/03 scale: AS NOTED
project no.: 30337.00
sheet no.: S10