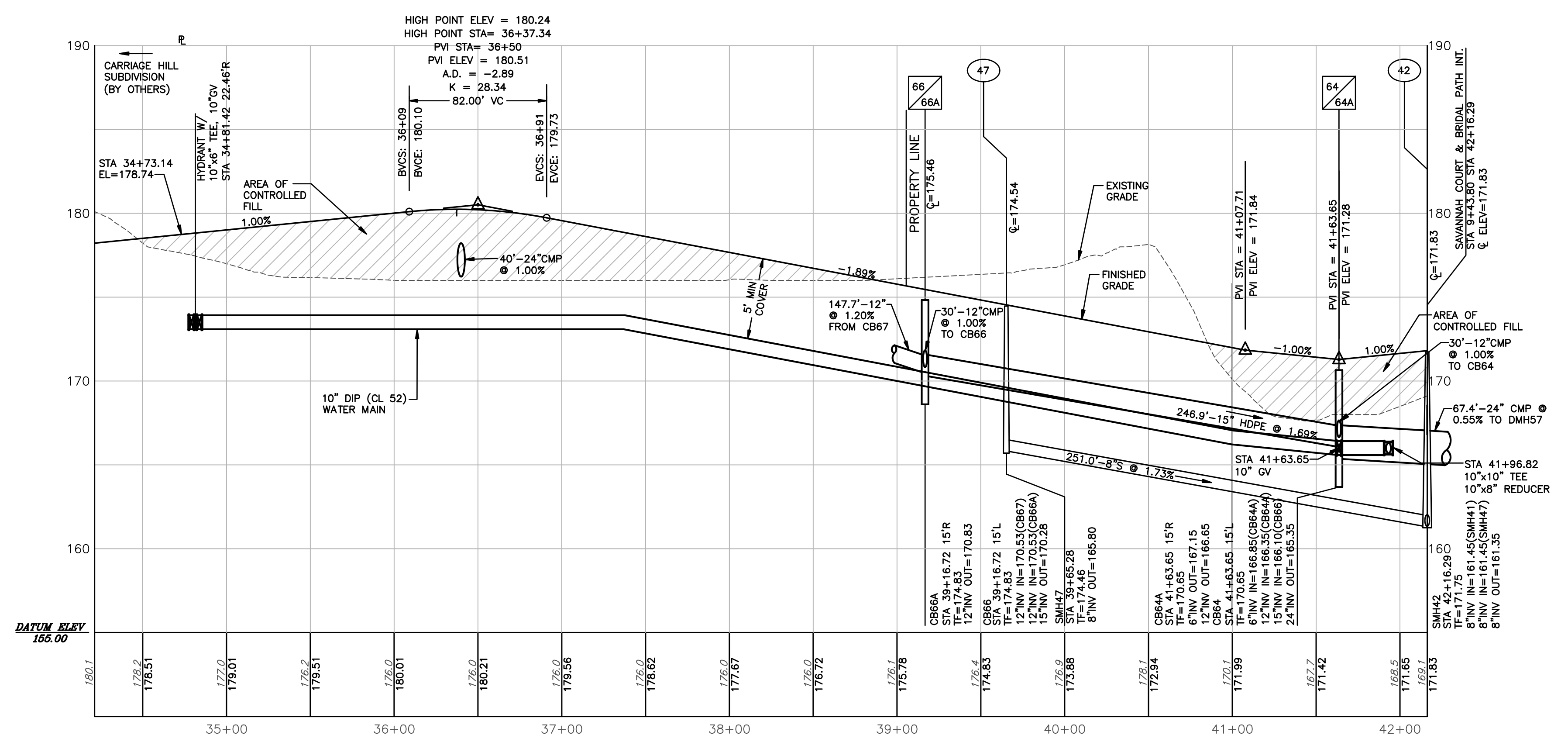


1  
S13  
PLAN - BRIDAL PATH  
STA 34+21 TO STA 42+16  
SCALE: 1"=50'  
CROSS REFERENCE:



4  
S13  
PROFILE - BRIDAL PATH  
STA 34+21 TO STA 42+16  
SCALE: HORIZ. 1"=50'  
VERT. 1"=5'  
DESIGN SPEED = 30 MPH  
STATIONING IS ALONG THE CENTERLINE OF THE ROAD

**APPLICANT:**  
AMELIORE HOMES  
1900 WESTERN AVENUE  
ALBANY, NY 12203  
PH: (518) 456-1010  
FAX: (518) 456-1999

ALL RIGHTS RESERVED. COPY OR REPRODUCTION OF THIS PLAN OR ANY PORTION THEREOF IS PROHIBITED WITHOUT THE WRITTEN PERMISSION OF THE DESIGN ENGINEER, SURVEYOR, OR ARCHITECT. ALTERATION OF THIS DRAWING, EXCEPT BY A LICENSED P.E. IS ILLEGAL. ANY ALTERATION BY A P.E. MUST BE INDICATED AND BEAR HIS SEAL, SIGNATURE, AND DATE OF ALTERATION.

**THE Chazen COMPANIES**  
Engineers/Surveyors  
Planners  
Environmental Scientists

**CHAZEN ENGINEERING & LAND SURVEYING CO., P.C.**

Delaware County Office: 21 Fox Street, Poughkeepsie, New York 12601, Phone: (845) 454-3980  
Capital District Office: 547 River Street, Troy, New York 12180, Phone: (518) 273-0055  
Orange County Office: 306 Main Street, Newburgh, New York 12550, Phone: (845) 347-1133  
North Country Office: 100 Glen Street, Saratoga Springs, New York 12801, Phone: (518) 812-0013

7	9/15/08	REVISED PER TOWN DIVISION OF ENGINEERING COMMENTS
6	8/7/08	REVISED PER TOWN DIVISION OF ENGINEERING COMMENTS
5	6/13/08	REVISED PER TOWN 5/13/08 COMMENTS
4	02/26/08	GENERAL REVISIONS PER TOWN AND AEC COMMENTS
3	9/27/07	REVISED PER TOWN 5/23/07 COMMENTS
2	9/15/06	REVISED PER TOWN 07/12/06 COMMENTS
1	3/4/05	REVISED PER TOWN COMMENTS
rev.	date	description

**ELM AVENUE EAST RESIDENTIAL DEVELOPMENT**  
**PLAN / PROFILE**  
**BRIDAL PATH**  
**STA 34+21 TO STA 42+16**  
TOWN OF BETHLEHEM, ALBANY COUNTY, NEW YORK

drawn: CJB checked: JML  
date: 12/19/03 scale: AS NOTED  
project no.: 30337.00  
sheet no.: S13