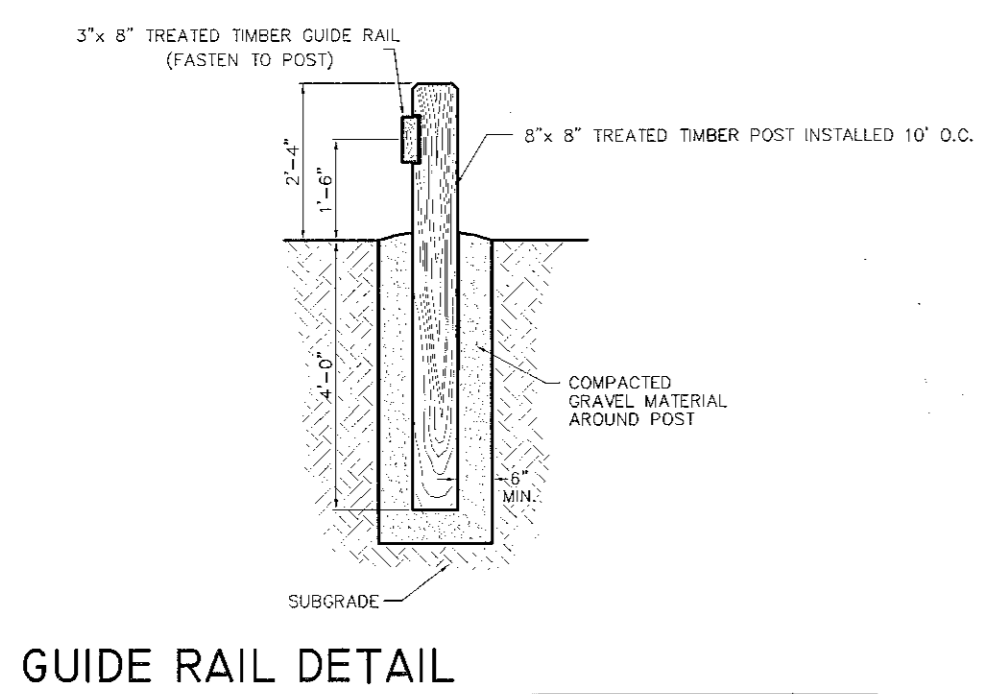
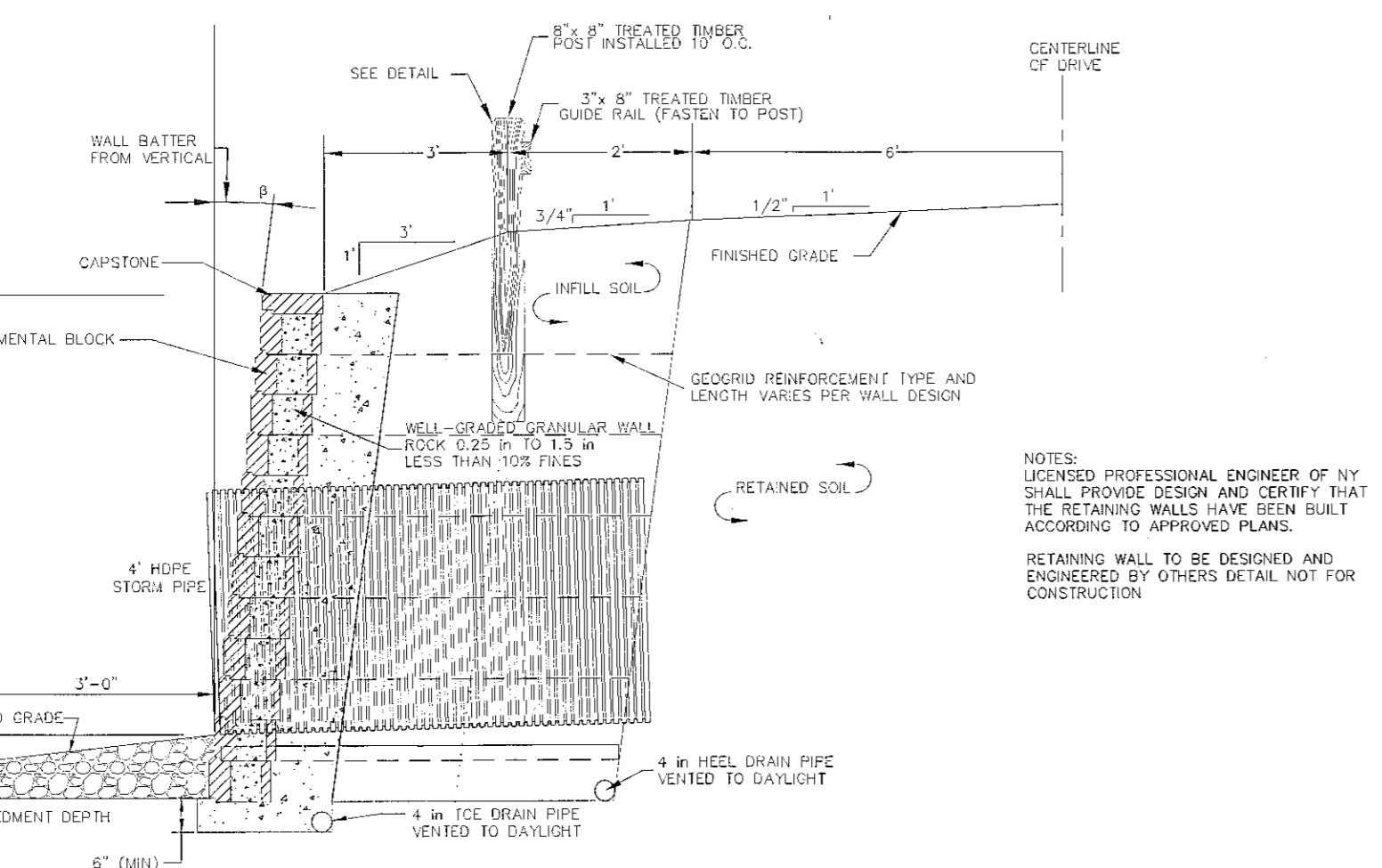


1. STONE SIZE - AASHTO DESIGNATION M 43, SIZE NO. 2(2-1/2" TO 1-1/2") USE CRUSHED STONE.
2. LENGTH - AS EFFECTIVE BUT NOT LESS THAN 50 FEET.
3. THICKNESS - NOT LESS THAN EIGHT(8) INCHES.
4. WIDTH - NOT LESS THAN FULL WIDTH OF ALL POINTS OF INGRESS OR EGRESS.
5. FILTER CLOTH - WILL BE PLACED OVER ENTIRE AREA PRIOR TO PLACING OF STONE.
6. SURFACE WATER - ALL SURFACE WATER FLOWING OR DIVERTED TOWARD CONSTRUCTION ENTRANCES SHALL BE PIPED ACROSS THE ENTRANCE. IF PIPING IS IMPRACTICAL, A MOUNTAINABLE BURN WITH 5:1 SLOPES WILL BE PERMITTED.
7. WASHING - WHEN NECESSARY, WHEELS SHALL BE CLEANED TO REMOVE SEDIMENT PRIOR TO EXITING ONTO PUBLIC RIGHT-OF-WAY. WHEN WASHING IS REQUIRED, IT SHALL BE DONE ON AN AREA STABILIZED WITH CRUSHED STONE WHICH DRAINS INTO AN APPROVED SEDIMENT TRAP OR SEDIMENT BASIN. ALL SEDIMENT SHALL BE PREVENTED FROM ENTERING ANY STORM DRAIN, DITCH OR WATERCOURSE THROUGH USE OF SAND BAGS, GRAVEL BOARDS OR OTHER APPROVED METHODS.
8. MAINTENANCE - THE ENTRANCE SHALL BE MAINTAINED IN A CONDITION WHICH WILL PREVENT TRACKING OR FLOWING OF SEDIMENT ONTO PUBLIC RIGHTS-OF-WAY. THIS MAY REQUIRE PERIODIC TOP DRESSING WITH ADDITIONAL STONE AS CONDITIONS DEMAND AND REPAIR AND/OR CLEANOUT OF ANY SOURCES USED TO TRAP SEDIMENT. ALL SEDIMENT SPILLERS, DRIPPED, WASHED OR TRACKED ONTO PUBLIC RIGHTS-OF-WAY MUST BE REMOVED IMMEDIATELY.
9. PERIODIC INSPECTION AND NEEDED MAINTENANCE SHALL BE PROVIDED AFTER EACH RAIN.

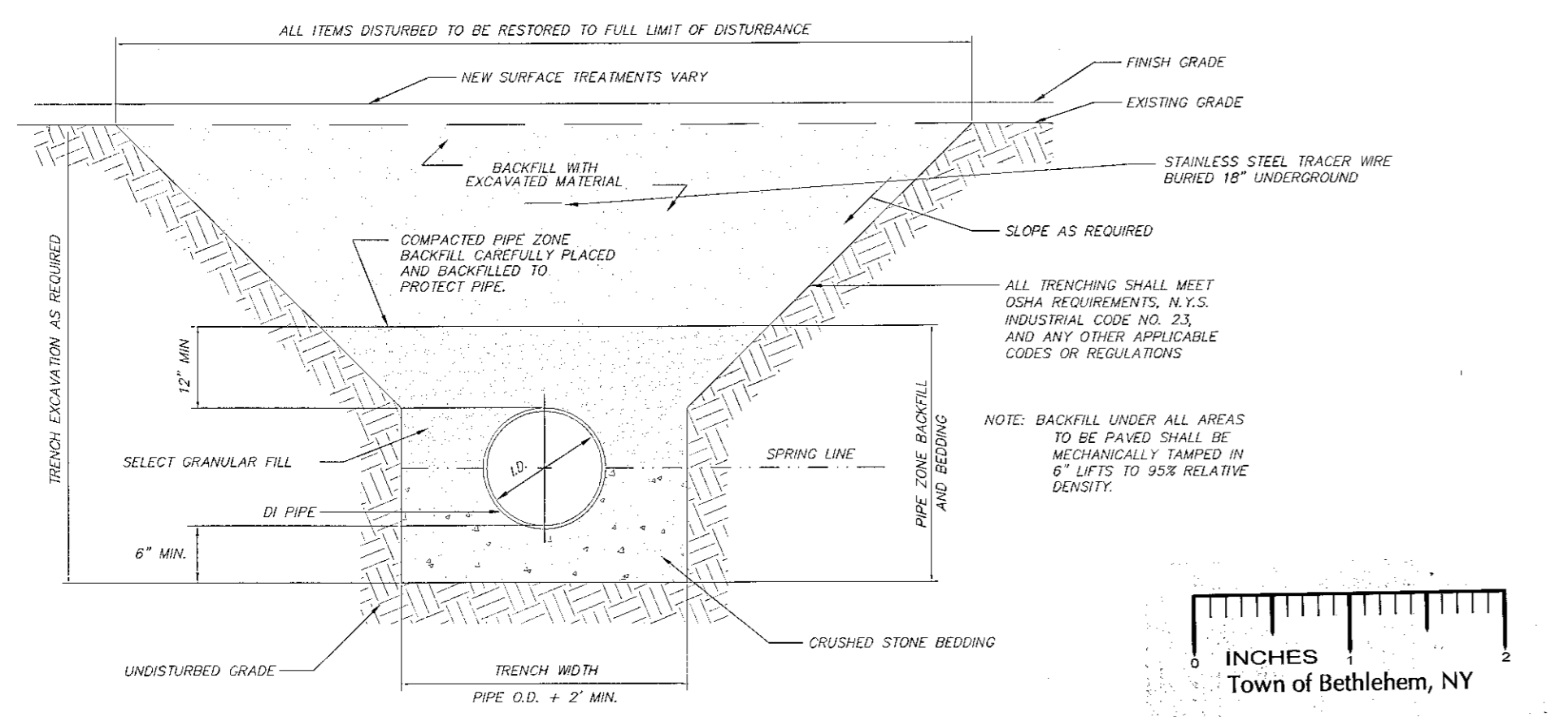
**STABILIZED CONSTRUCTION ENTRANCE**  
NOT TO SCALE



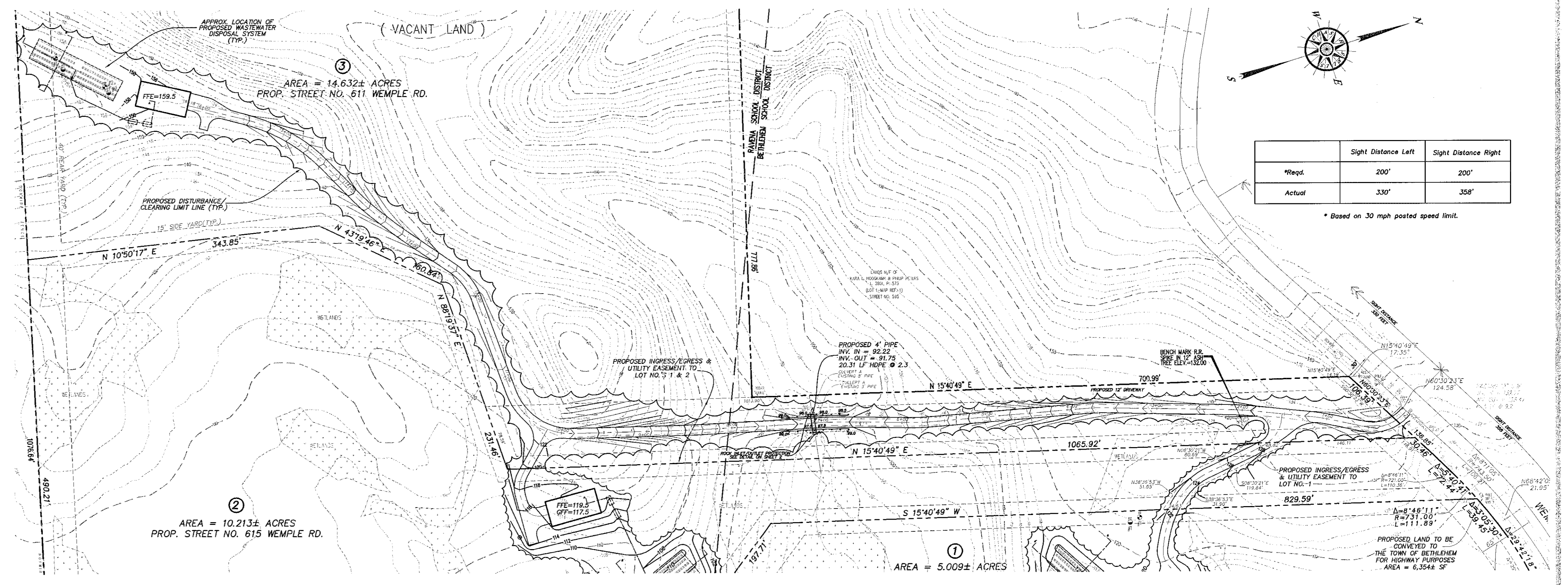
**GUIDE RAIL DETAIL**  
NOT TO SCALE



**RETAINING WALL DETAIL**  
TO BE DESIGNED AND ENGINEERED BY OTHERS  
DETAIL NOT FOR CONSTRUCTION NOT TO SCALE

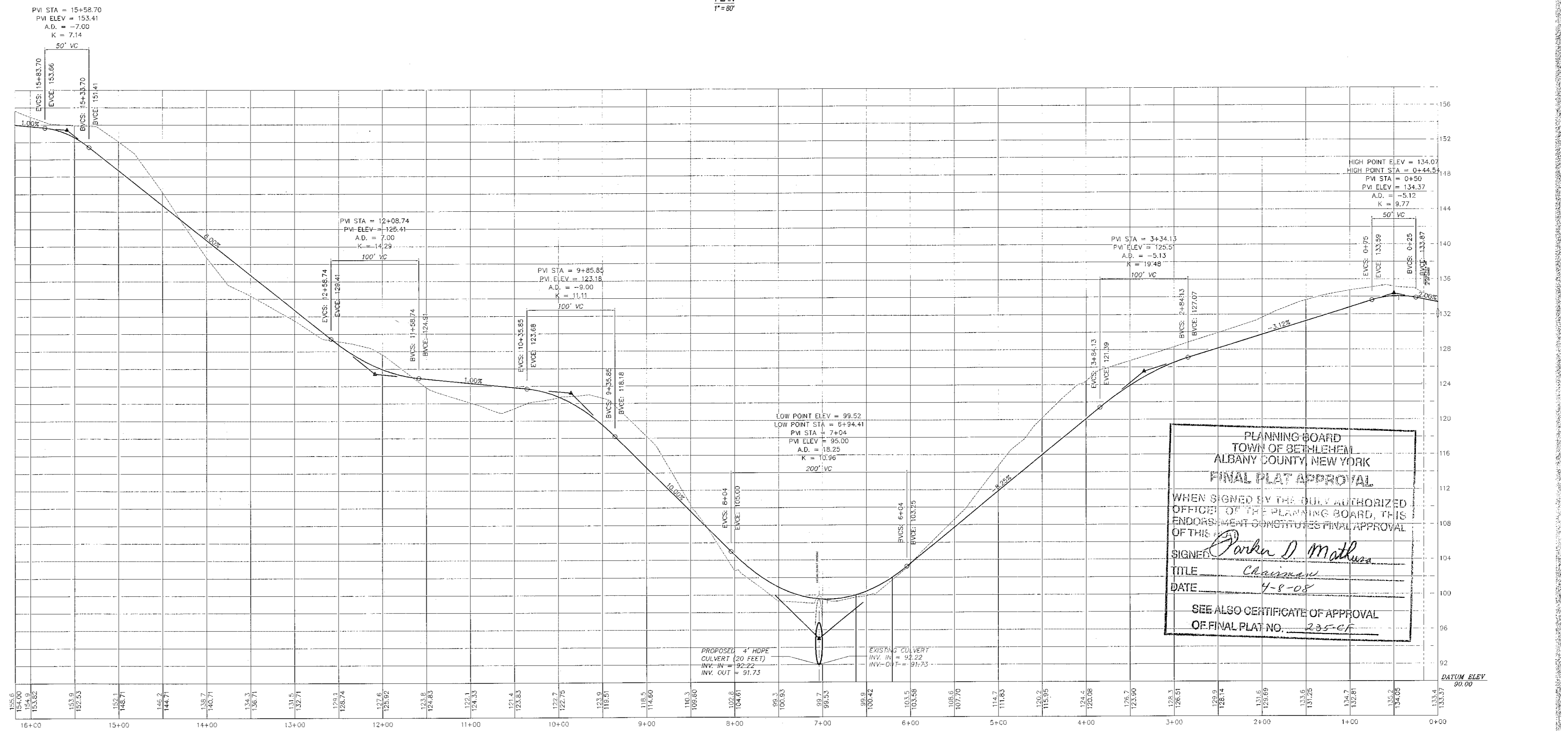


**TRENCH AND BEDDING DETAIL**  
NOT TO SCALE



	Sight Distance Left	Sight Distance Right
*Reqd.	200'	200'
Actual	330'	358'

\* Based on 30 mph posted speed limit.



PLANNING BOARD  
TOWN OF BETHLEHEM  
ALBANY COUNTY, NEW YORK  
FINAL PLAN APPROVAL

WHEN SIGNED BY THE DULY AUTHORIZED OFFICER OF THE PLANNING BOARD, THIS ENDORSEMENT CONSTITUTES FINAL APPROVAL OF THIS

SIGNED: *Parker D. Mathias*  
TITLE: *Chairman*  
DATE: *4-8-05*

SEE ALSO CERTIFICATE OF APPROVAL OF FINAL PLAN NO. *235-e1*

© COPYRIGHT 2007 CHAS. H. SELLS, INC. ALL RIGHTS RESERVED. UNAUTHORIZED DUPLICATION IS A VIOLATION OF APPLICABLE LAWS.

DATE	REVISIONS	BY
5-4-07	REVISED PER TOWN COMMENTS DATED APRIL 22, 2007	P.B.C.
6-28-07	REVISED PER TOWN COMMENTS DATED AUGUST 15, 2007	K.E.H.
10-4-07	REVISED PER TOWN COMMENTS DATED SEPTEMBER 20, 2007	K.E.H.
11-8-07	REVISED PER TOWN COMMENTS DATED NOVEMBER 2, 2007	K.E.H.
11-13-07	CHANGE DIMENSION ON CONSTRUCTION ENTRANCE DETAIL	K.E.H.

**CHAS. H. SELLS, INC.**  
Consulting Engineers, Surveyors & Photogrammetrists  
CIVIL, STRUCTURAL AND TRANSPORTATION ENGINEERING  
7 WASHINGTON SQUARE  
ALBANY, NEW YORK 12205  
518\*452\*3545 FAX 518\*452\*3755

Alteration of this document, except by a licensed professional engineer, is illegal. Copies of this map not bearing an ink or embossed seal, New York registration no. 46636 shall not be considered to be a true and valid copy.

N.Y.S. Lic. No. 46636  
Professional Engineer  
Percy E. Giffon, P.E.

Unauthorized alteration or addition to this map is a violation of section 7209, sub-division 2 of the New York State Education Law.  
Only copies from the original of this map bearing an original signature and the embossed seal of the preparer shall be considered to be true and valid copies.

N.Y.S. Lic. No. 49,454  
Michael I. Groff, P.L.S.

**MINOR SUBDIVISION**  
PREPARED FOR  
**Bethlehem Real Estate LLC**  
WEMPLE ROAD \* TOWN OF BETHLEHEM \* ALBANY COUNTY \* NEW YORK  
**COMMON DRIVEWAY PROFILE**

Date: January 23, 2007 Scale: AS NOTED Cadd: site plan-2

Sheet: **2**  
2 of 3