

ALTERATION OF THIS DOCUMENT EXCEPT BY A LICENSED PROFESSIONAL ENGINEER OR LAND SURVEYOR IS ILLEGAL.



REVISIONS	DATE	REMARKS
1	10/1/12	THREE SHEET SET
2	10/1/12	REVISION TO THE TOWN
3	10/1/12	CHEMISTRY AND TECH PARK SIGN FACE
4	10/1/12	GENERAL EASEMENT PL. TABLE REVISIONS
5	10/1/12	FINAL PLAT APPROVAL COMMENTS
6	11/1/12	GENERAL

REVISIONS	DATE	REMARKS
1	10/1/12	THREE SHEET SET
2	10/1/12	REVISION TO THE TOWN
3	10/1/12	CHEMISTRY AND TECH PARK SIGN FACE
4	10/1/12	GENERAL EASEMENT PL. TABLE REVISIONS
5	10/1/12	FINAL PLAT APPROVAL COMMENTS
6	11/1/12	GENERAL

VISTA MAJOR SUBDIVISION - FINAL PLAT
VISTA TECHNOLOGY CAMPUS
TOWN OF BETHLEHEM
COUNTY OF ALBANY, STATE OF NEW YORK

2 of 3

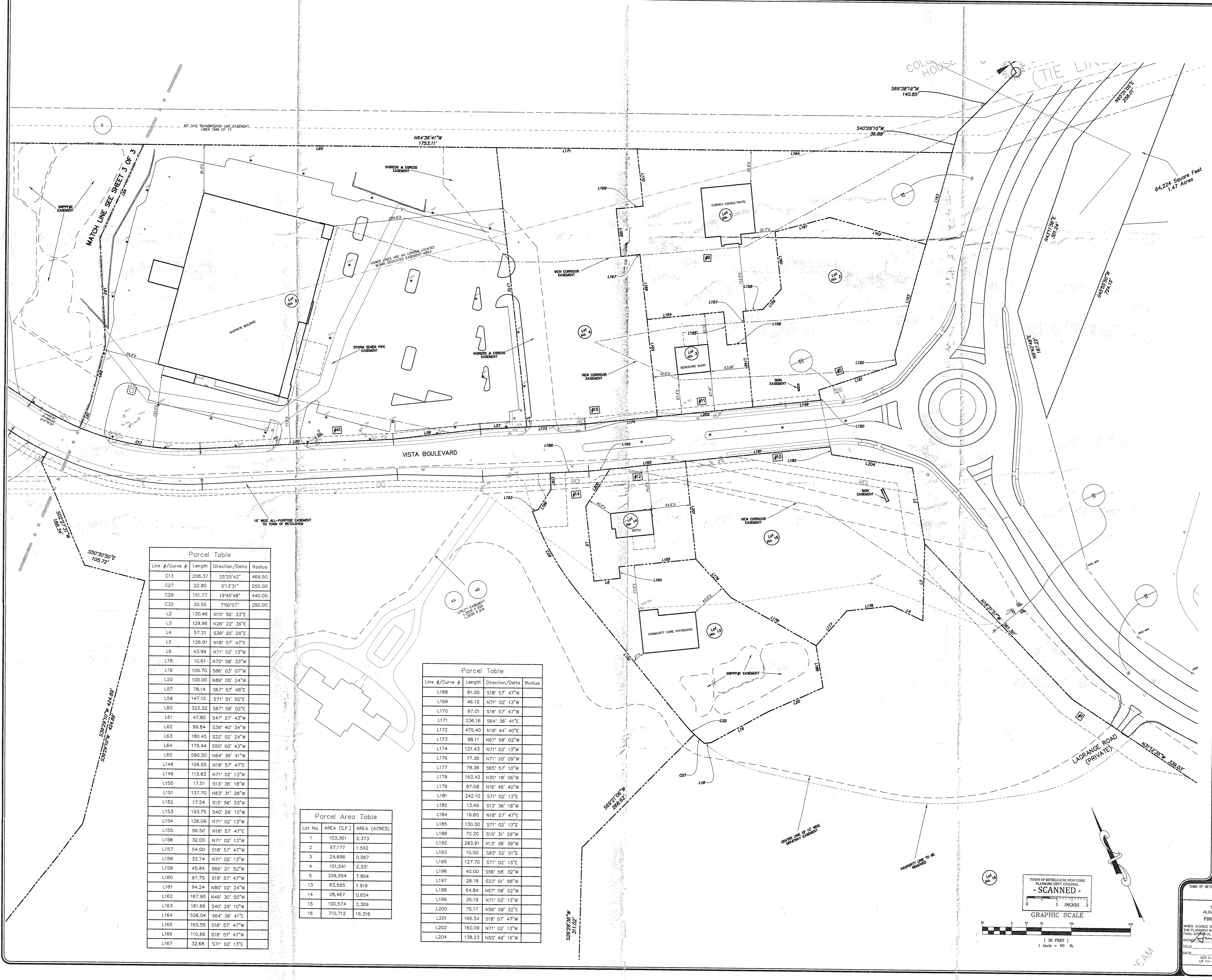
TOWN OF BETHLEHEM PLANNING BOARD APPROVAL

PLANNING BOARD
 TOWN OF BETHLEHEM, NEW YORK
 ALBANY COUNTY, NEW YORK
 PLANNING DEPT. ORIGINAL
- SCANNED -
 FINAL APPROVAL OF THE PLAT

WHEN SIGNED BY THE DUTY AUTHORIZED ON THE PLANNING BOARD, THIS ENDORSEMENT IS FINAL APPROVAL OF THE PLAT.

SIGNATURE: *[Signature]*
 TITLE: Chairman
 DATE: 11/1/12

SEE ALSO OUR OFFICE OF FILE NO. 12345 45HCF



Line #/Curve #	Length	Direction/Delta	Radius
C13	208.37	25°25'42"	469.50
C27	22.80	51°3'31"	250.00
C29	151.77	19°45'48"	440.00
C32	30.55	7°00'07"	250.00
L2	130.46	N15° 56' 33"E	
L3	129.96	N26° 22' 36"E	
L4	57.21	S39° 20' 29"E	
L5	126.91	N18° 57' 47"E	
L6	43.99	N71° 02' 13"W	
L18	10.61	N70° 58' 33"W	
L19	109.70	S86° 03' 07"W	
L20	100.00	N89° 05' 24"W	
L57	78.14	S67° 57' 48"E	
L59	147.15	S71° 51' 50"E	
L60	323.32	S67° 58' 02"E	
L61	47.80	S47° 27' 43"W	
L62	99.84	S39° 40' 34"W	
L63	180.45	S22° 02' 24"W	
L64	175.44	S50° 00' 43"W	
L65	990.50	N64° 36' 41"W	
L148	109.05	N18° 57' 47"E	
L149	113.83	N71° 02' 13"W	
L150	17.51	S13° 36' 18"W	
L151	137.70	N83° 31' 28"W	
L152	17.54	S15° 56' 33"W	
L153	193.75	S40° 29' 10"W	
L154	128.09	N71° 02' 13"W	
L155	56.50	N18° 57' 47"E	
L156	32.00	N71° 02' 13"W	
L157	54.00	S18° 57' 47"W	
L158	33.74	N71° 02' 13"W	
L159	45.84	S66° 21' 52"W	
L160	97.75	S18° 57' 47"W	
L161	94.24	N80° 02' 24"W	
L162	167.95	N49° 30' 50"W	
L163	161.66	S40° 29' 10"W	
L164	526.04	S64° 36' 41"E	
L165	165.55	S18° 57' 47"W	
L166	110.66	S18° 57' 47"W	
L167	32.68	S71° 02' 13"E	

Lot No.	AREA (S.F.)	AREA (ACRES)
1	103,361	2.373
2	67,177	1.542
3	24,696	0.567
4	101,541	2.331
5	339,954	7.804
13	83,595	1.919
14	28,467	0.654
15	100,574	2.309
16	710,712	16.316

Line #/Curve #	Length	Direction/Delta	Radius
L168	81.00	S18° 57' 47"W	
L169	46.15	N71° 02' 13"W	
L170	97.01	S18° 57' 47"W	
L171	236.16	S64° 36' 41"E	
L172	475.40	N18° 44' 40"E	
L173	98.11	N67° 58' 02"W	
L174	121.43	N71° 02' 13"W	
L176	77.36	N71° 20' 09"W	
L177	78.36	S65° 57' 10"W	
L178	163.42	N35° 18' 06"W	
L179	87.08	N16° 46' 40"W	
L181	242.10	S71° 02' 13"E	
L182	13.49	S13° 36' 18"W	
L184	19.60	N18° 57' 47"E	
L185	130.00	S71° 02' 13"E	
L188	72.20	S15° 31' 29"W	
L192	283.91	N13° 38' 39"W	
L193	10.00	S83° 52' 51"E	
L195	127.70	S71° 02' 13"E	
L196	40.00	S56° 58' 32"W	
L197	28.18	S22° 01' 58"W	
L198	64.84	N67° 58' 02"W	
L199	35.19	N71° 02' 13"W	
L200	75.17	N56° 58' 32"E	
L201	166.54	S18° 57' 47"W	
L202	160.09	N71° 02' 13"W	
L204	138.23	N55° 49' 16"W	