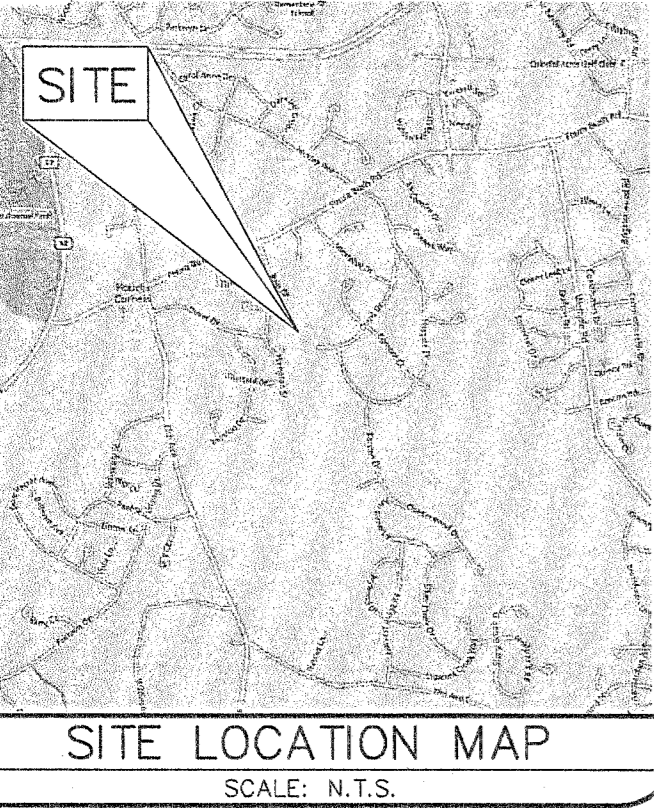
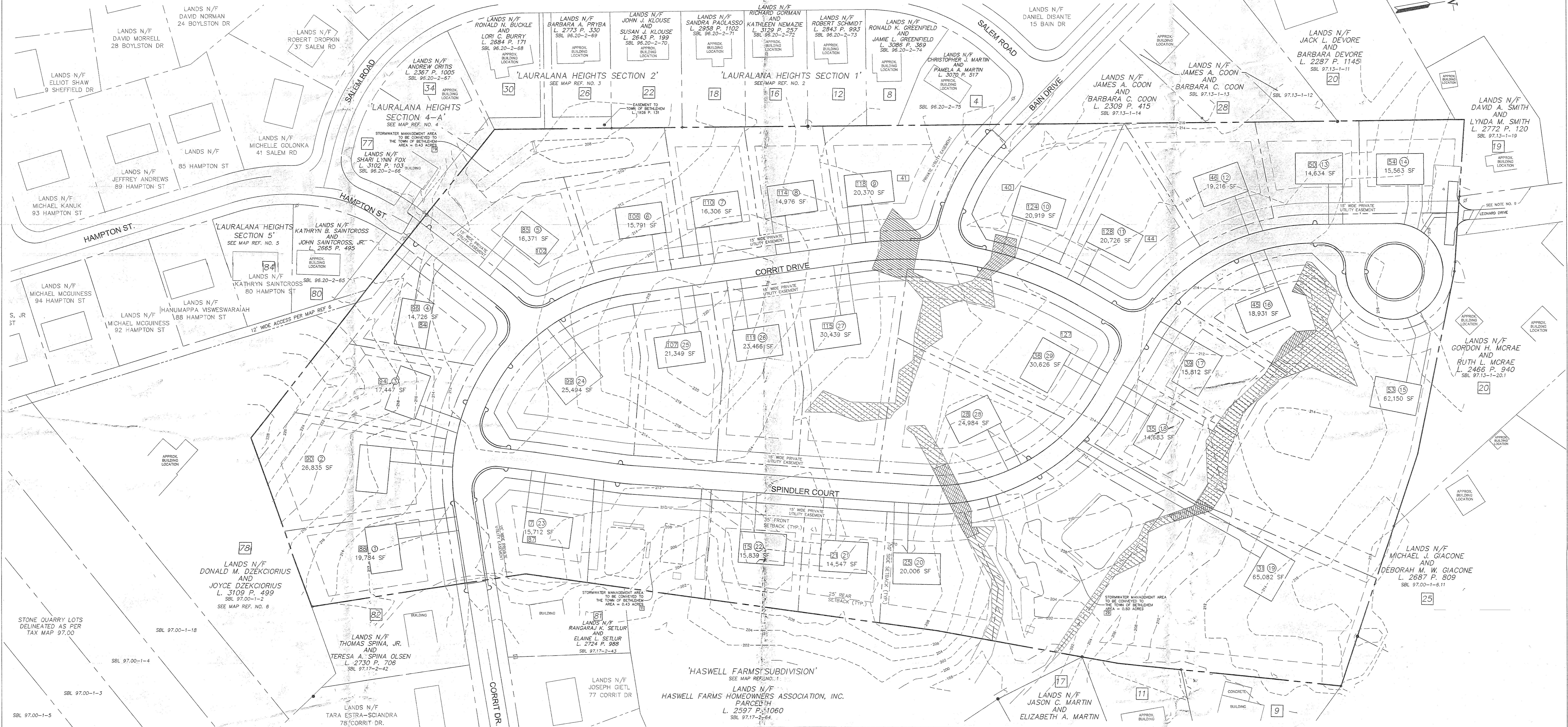


# STONEFIELD SUBDIVISION

## CORRIT DRIVE, HAMPTON STREET & SPINDLER COURT

### TOWN OF BETHLEHEM

### ALBANY COUNTY, STATE OF NEW YORK



**ingalls**  
 ingalls & associates, LLP  
 engineering, environmental, surveying  
 2503 GULDBERG AVENUE  
 SCHEENECTADY, NY 12306  
 PHONE: (518) 393-7725  
 FAX: (518) 393-2224

**TAX MAP ID:** 97.00-1-1  
**SITE AREA:** 20.52 ACRES  
**LAST REVISED:** MAY 18, 2017

**OWNER:** GEORGE H. WALDENMAIER, CHARLES J. WALDENMAIER, JR., TRUDIE J. WALDENMAIER & MICHAEL F. WALDENMAIER  
**APPLICANT:** CHARLEW BUILDERS, INC.  
 141 WEST CAMPBELL ROAD, SUITE 101  
 SCHEENECTADY, NY 12306

SCHEDULE OF DRAWINGS	
SHEET NO.	DRAWING TITLE
1	COVER SHEET
2	EXISTING CONDITIONS MAP
3	FINAL PLAT
4	GRADING PLAN
5	UTILITY PLAN
6	LANDSCAPING PLAN
7	ROAD PROFILES
8	ROAD PROFILES
9	ROAD PROFILES
10	MITIGATION PLAN & DETAILS
11	EROSION & SEDIMENT CONTROL PLAN
12	ESC DETAILS
13	CONSTRUCTION DETAILS

ALBANY COUNTY DEPARTMENT OF HEALTH  
 DIVISION OF ENVIRONMENTAL HEALTH SERVICES  
 By direction of the Commissioner of Health, these  
 plans are hereby approved. See sheet 13  
 for date and signature.

ALBANY COUNTY HEALTH DEPARTMENT APPROVAL

TOWN OF BETHLEHEM, NEW YORK  
 PLANNING DEPT. ORIGINAL  
 - SCANNED -

PLANNING BOARD  
 TOWN OF BETHLEHEM  
 ALBANY COUNTY, NEW YORK  
 By direction of the Chairman,  
 these drawings are hereby approved.  
 See sheet(s) 13 for  
 date and signature.

BETHLEHEM PLANNING BOARD APPROVAL

**ingalls**  
 ingalls & associates, LLP  
 engineering, environmental, surveying  
 2503 GULDBERG AVENUE  
 SCHEENECTADY, NY 12306  
 PHONE: (518) 393-7725  
 FAX: (518) 393-2224

**COVER SHEET**  
 STONEFIELD SUBDIVISION  
 CORRIT DRIVE, HAMPTON STREET & SPINDLER COURT  
 TOWN OF BETHLEHEM  
 ALBANY COUNTY STATE OF NEW YORK

DATE: NOVEMBER 24, 2015  
 CHECKED BY: D.F.I.  
 JOB NO: 13-062  
 SCALE: N.T.S.

UNAUTHORIZED ALTERATION OR ADDITION TO THIS DRAWING IS A VIOLATION OF SECTION 7209 SUBDIVISION 2 OF THE NEW YORK STATE EDUCATION LAW. ONLY COPIES MADE FROM THE ORIGINAL OF THIS DRAWING BEARING AN ORIGINAL INKED OR EMBOSSED SEAL AND SIGNATURE SHALL BE CONSIDERED TO BE VALID TRUE COPIES.

© Copyright 2017 - ingalls & associates, LLP - All rights reserved.

DRAWN BY: C.D.L.  
 CADD FILE: 13-062 Layout.dwg

SHEET 1 OF 13

HTE 15-00400008 Cont 275CF 05/16/2017