

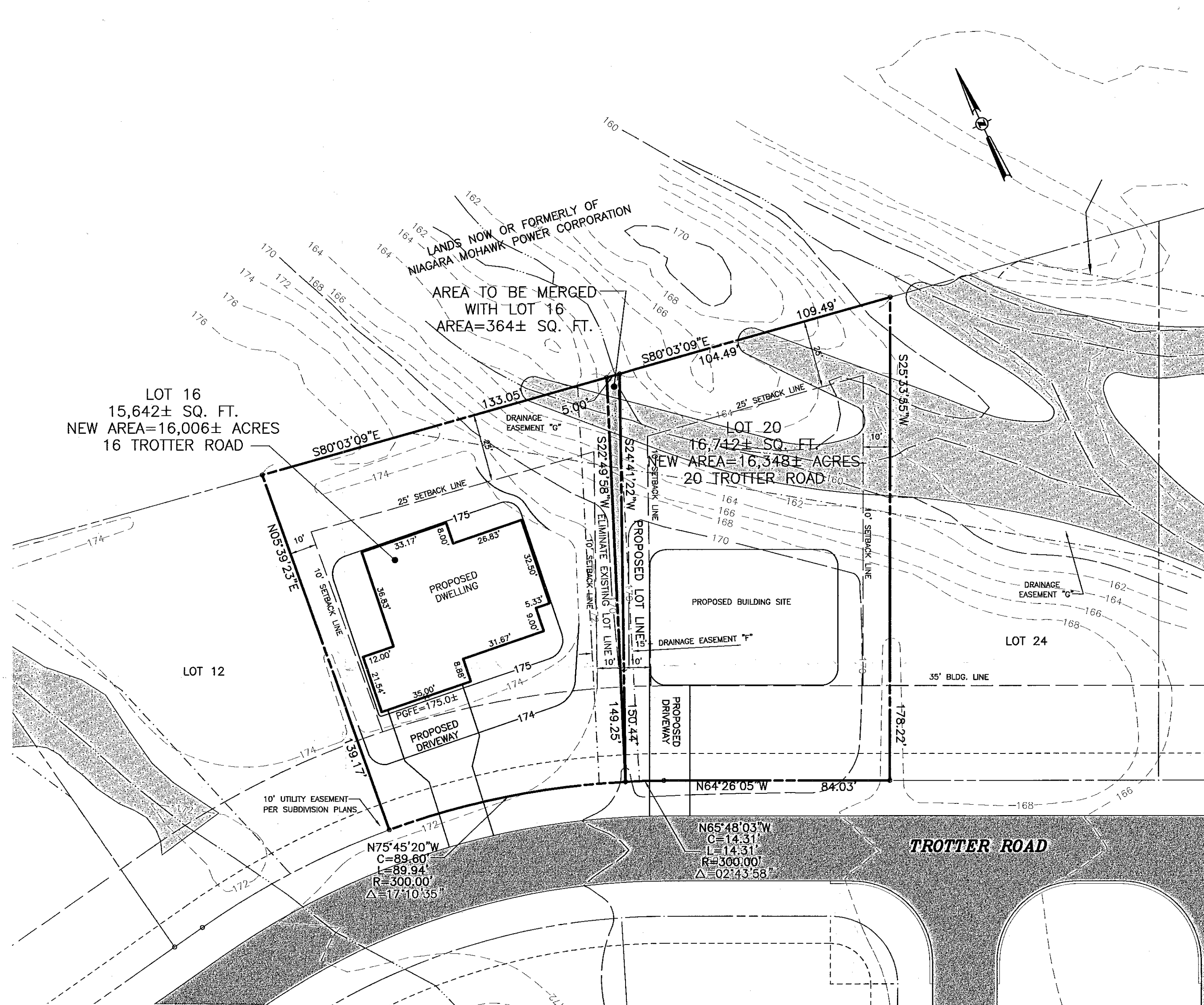
SITE MAP
CARRIAGE HILL SUBDIVISION
NO SCALE

MAP REFERENCES:

- "Final Plan Amended Carriage Hill Subdivision Map of Lands of Charlew Construction Corp." Town of Bethlehem Albany County, NY prepared by Edward W. Boutelle and Son dated November 14, 1995 last revised March 2006 and filed in the Albany County Clerk's Office on November 1, 2006 in Drawer 172 as Map No. 11898.

MAP NOTE:

- UPON ITS APPROVAL, THIS DRAWING IS INTENDED TO CONVEY INFORMATION THAT IS LIMITED SOLELY TO AN APPROVED AMENDMENT IN THE LOCATION OF THE LOT LINE BETWEEN LOTS 16 AND 20 IN THE CARRIAGE HILL SUBDIVISION. IT DOES NOT AUTHORIZE ANY OTHER AMENDMENTS TO THE DRAWINGS OR CONDITIONS THAT ARE PART OF THE CARRIAGE HILL SUBDIVISION APPROVAL, AS CITED IN THE CERTIFICATE OF CONDITIONAL APPROVAL OF FINAL PLAT, NO. 164-CF-M, DATED 10 JULY 2006, AND ON FILE WITH THE TOWN OF BETHLEHEM PLANNING BOARD, WHICH SHALL OTHERWISE REMAIN IN FULL FORCE AND EFFECT.



LOT 16
15,642± SQ. FT.
NEW AREA=16,006± ACRES
16 TROTTER ROAD

LOT 20
16,742± SQ. FT.
NEW AREA=16,348± ACRES
20 TROTTER ROAD

RECEIVED

NOV 30 2010

PLANNING BOARD
TOWN OF BETHLEHEM

PLANNING BOARD
TOWN OF BETHLEHEM
ALBANY COUNTY, NEW YORK
FINAL PLAT APPROVAL

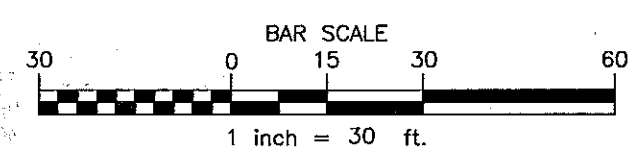
WHEN SIGNED BY THE DULTY AUTHORIZED OFFICER OF THE PLANNING BOARD, THIS ENDORSEMENT CONSTITUTES FINAL APPROVAL OF THIS PLAT

SIGNED: *George J. J...*
TITLE: *Chairman*
DATE: *December 7, 2010*

APPLICANT/OWNER: SEE ALSO CERTIFICATE OF APPROVAL OF FINAL PLAT NO. *164-CF-M-112*

CHARLEW BUILDERS INC.
C/O COREY LEWANDOWSKI
3020 MARIAVILLE ROAD
SCHENECTADY, NEW YORK 12306

Albany County Clerk
Document Number 10799915
Rcvd 01/05/2011 2:09:29 PM



DATE	REVISIONS RECORD/DESCRIPTION	DRAFTER	CHECK	APPR.	UNAUTHORIZED ALTERATION OR ADDITION TO THIS DOCUMENT IS A VIOLATION OF THE NEW YORK STATE EDUCATION LAW.
11/04/10	REVISIONS PER TOWN REQUEST	MDD	WJN		© 2010 C.T. MALE ASSOCIATES, P.C. APPROVED: DRAFTED : MDD CHECKED : WJN PROJ. NO : 06.6137 SCALE : 1"=30' DATE : OCT. 21, 2010

LOT LINE ADJUSTMENT BETWEEN

LOT 16 AND LOT 20 TROTTER ROAD

CARRIAGE HILL SUBDIVISION

TOWN OF BETHLEHEM ALBANY COUNTY, NEW YORK

C.T. MALE ASSOCIATES, P.C.
50 CENTURY HILL DRIVE, LATHAM, NY 12110
518.786.7400 • FAX 518.786.7299
ARCHITECTURE & BUILDING SYSTEMS ENGINEERING • CIVIL ENGINEERING
ENVIRONMENTAL SERVICES • SURVEY & LAND INFORMATION SERVICES

SHEET 1 OF 1
DWG. NO: 10-612

PROJECT AND DRAWING FILES ARE FILED IN PROJECT NUMBER 06.6037
CAD DWG. FILE NAME: LOT 16-20 BLA.DWG

"ONLY COPIES OF THIS MAP SIGNED IN RED INK AND EMBOSSED WITH THE SEAL OF AN OFFICER OF C.T. MALE ASSOCIATES, P.C. OR A DESIGNATED REPRESENTATIVE SHALL BE CONSIDERED TO BE A VALID TRUE COPY"