

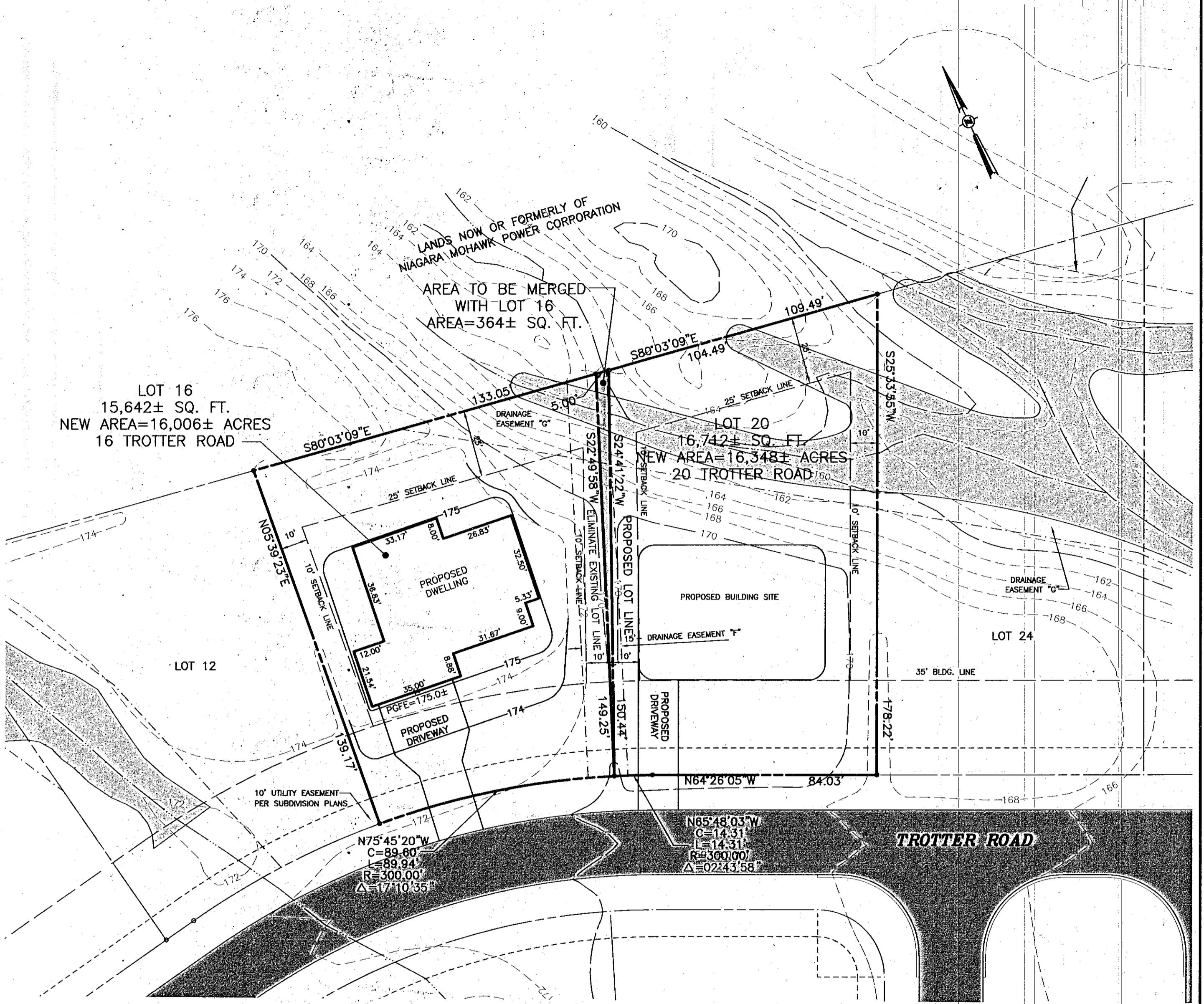
**SITE MAP**  
CARRIAGE HILL SUBDIVISION  
NO SCALE

**MAP REFERENCES:**

- "Final Plan Amended Carriage Hill Subdivision Map of Lands of Charlew Construction Corp." Town of Bethlehem Albany County, NY prepared by Edward W. Boutelle and Son dated November 14, 1995 last revised March 2006 and filed in the Albany County Clerk's Office on November 1, 2006 in Drawer 172 as Map No. 11898.

**MAP NOTE:**

1. UPON ITS APPROVAL, THIS DRAWING IS INTENDED TO CONVEY INFORMATION THAT IS LIMITED SOLELY TO AN APPROVED AMENDMENT IN THE LOCATION OF THE LOT LINE BETWEEN LOTS 16 AND 20 IN THE CARRIAGE HILL SUBDIVISION. IT DOES NOT AUTHORIZE ANY OTHER AMENDMENTS TO THE DRAWINGS OR CONDITIONS THAT ARE PART OF THE CARRIAGE HILL SUBDIVISION APPROVAL, AS CITED IN THE CERTIFICATE OF CONDITIONAL APPROVAL OF FINAL PLAT, NO. 164-CF-M, DATED 10 JULY 2006, AND ON FILE WITH THE TOWN OF BETHLEHEM PLANNING BOARD, WHICH SHALL OTHERWISE REMAIN IN FULL FORCE AND EFFECT.



**RECEIVED**

NOV 30 2010

PLANNING BOARD  
TOWN OF BETHLEHEM

PLANNING BOARD  
TOWN OF BETHLEHEM  
ALBANY COUNTY, NEW YORK  
**FINAL PLAT APPROVAL**

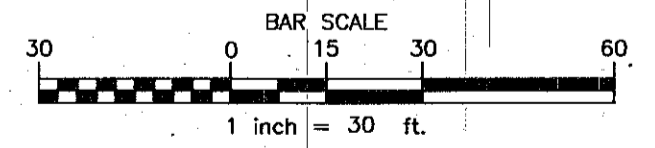
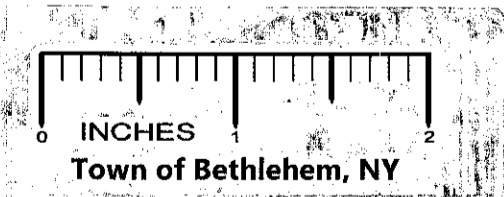
WHEN SIGNED BY THE DULTY AUTHORIZED OFFICER OF THE PLANNING BOARD, THIS ENDORSEMENT CONSTITUTES FINAL APPROVAL OF THIS PLAT

SIGNED: *George J. J...*  
TITLE: Chairman  
DATE: December 7, 2010

APPLICANT/OWNER:  
SEE ALSO CERTIFICATE OF APPROVAL OF FINAL PLAT NO. 164-CF-M-112

CHARLEW BUILDERS INC.  
C/O COREY LEWANDOWSKI  
3020 MARIVILLE ROAD  
SCHENECTADY, NEW YORK 12306

Albany County Clerk  
Document Number: 10799915  
Rcvd 01/05/2011 2:09:29 PM



WILLIAM J. NETTLETON PLS 49513	DATE	REVISIONS RECORD/DESCRIPTION	DRAFTER	CHECK	APPR.	UNAUTHORIZED ALTERATION OR ADDITION TO THIS DOCUMENT IS A VIOLATION OF THE NEW YORK STATE EDUCATION LAW.
	11/04/10	REVISIONS PER TOWN REQUEST	MDD	WJN		© 2010 C.T. MALE ASSOCIATES, P.C.
						APPROVED:
						DRAFTED : MDD
						CHECKED : WJN
						PROJ. NO: 06.6137
						SCALE : 1"=30'
					DATE : OCT. 21, 2010	

**LOT LINE ADJUSTMENT BETWEEN**  
**LOT 16 AND LOT 20 TROTTER ROAD**  
**CARRIAGE HILL SUBDIVISION**

TOWN OF BETHLEHEM      ALBANY COUNTY, NEW YORK

**C.T. MALE ASSOCIATES, P.C.**  
50 CENTURY HILL DRIVE, LATHAM, NY 12110  
518.786.7400 • FAX 518.786.7299  
ARCHITECTURE & BUILDING SYSTEMS ENGINEERING • CIVIL ENGINEERING  
ENVIRONMENTAL SERVICES • SURVEY & LAND INFORMATION SERVICES

SHEET 1 OF 1  
DWG. NO: 10-612

PROJECT AND DRAWING FILES ARE FILED IN PROJECT NUMBER 06.6037  
CAD DWG. FILE NAME: LOT 16-20 BLD.DWG

CAD DWG. FILE NAME: LOT 16-20 BLD.DWG