

MAP REFERENCES:

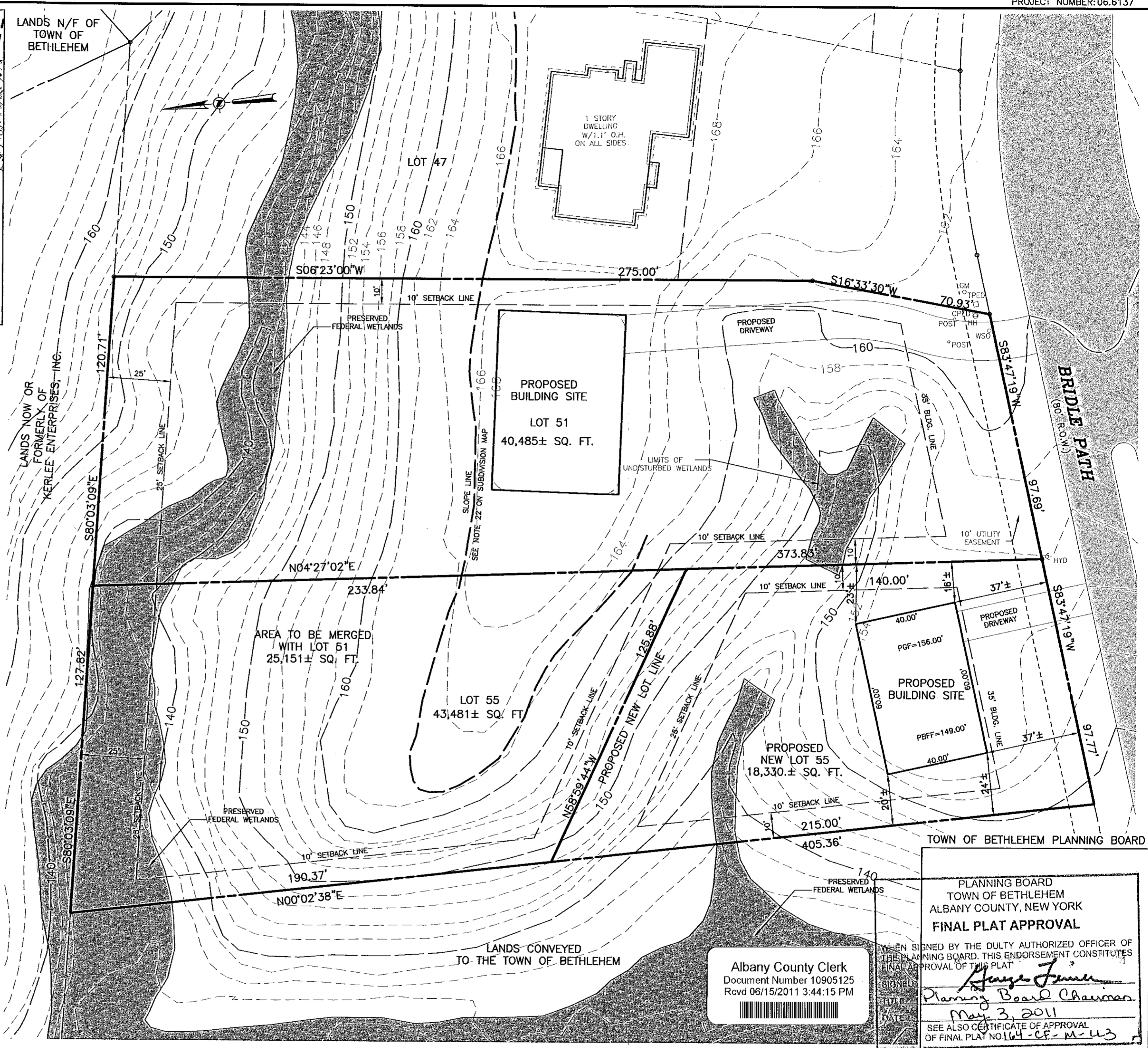
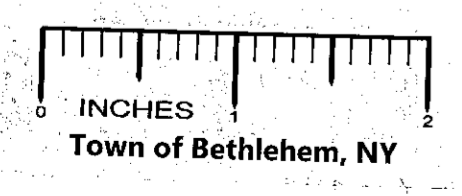
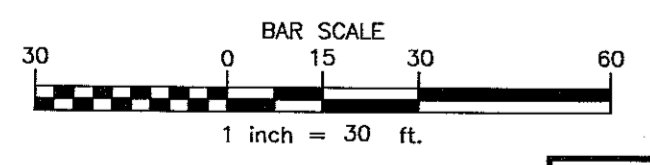
- "Final Plan Amended Carriage Hill Subdivision Map of Lands of Charlew Construction Corp." Town of Bethlehem Albany County, NY prepared by Edward W. Boutelle and Son dated November 14, 1995 last revised March 2006 and filed in the Albany County Clerk's Office on November 1, 2006 in Drawer 172 as Map No. 11898.

MAP NOTE:

- UPON ITS APPROVAL, THIS DRAWING IS INTENDED TO CONVEY INFORMATION THAT IS LIMITED SOLELY TO AN APPROVED AMENDMENT IN THE LOCATION OF THE LOT LINE BETWEEN LOTS 51 AND 55 IN THE CARRIAGE HILL SUBDIVISION. IT DOES NOT AUTHORIZE ANY OTHER AMENDMENTS TO THE DRAWINGS OR CONDITIONS THAT ARE PART OF THE CARRIAGE HILL SUBDIVISION APPROVAL, AS CITED IN THE CERTIFICATE OF CONDITIONAL APPROVAL OF FINAL PLAT, NO. 164-CF-M, DATED 10 JULY 2006, AND ON FILE WITH THE TOWN OF BETHLEHEM PLANNING BOARD, WHICH SHALL OTHERWISE REMAIN IN FULL FORCE AND EFFECT.

APPLICANT/OWNER:

CHARLEW BUILDERS INC.
C/O COREY LEWANDOWSKI
3020 MARIVILLE ROAD
SCHENECTADY, NEW YORK 12306



PROJECT AND DRAWING FILES ARE FILED IN PROJECT NUMBER 06.6037
CAD DWG. FILE NAME: LOT 51-55_BLA.DWG

| DATE | REVISIONS RECORD/DESCRIPTION | DRAFTER | CHECK | APPR. | UNAUTHORIZED ALTERATION OR ADDITION TO THIS DOCUMENT IS A VIOLATION OF THE NEW YORK STATE EDUCATION LAW. |
|------|------------------------------|---------|-------|-------|--|
| | | | | | © 2011 C.T. MALE ASSOCIATES, P.C. |
| | | | | | APPROVED: |
| | | | | | DRAFTED : MDD |
| | | | | | CHECKED : WJN |
| | | | | | PROJ. NO: 06.6137 |
| | | | | | SCALE : 1"=30' |
| | | | | | DATE : APR. 21, 2011 |

LOT LINE ADJUSTMENT BETWEEN

LOT 51 AND 55 BRIDLE PATH

CARRIAGE HILL SUBDIVISION

TOWN OF BETHLEHEM ALBANY COUNTY, NEW YORK

C.T. MALE ASSOCIATES, P.C.
50 CENTURY HILL DRIVE, LATHAM, NY 12110
518.786.7400 • FAX 518.786.7299
ARCHITECTURE & BUILDING SYSTEMS ENGINEERING • CIVIL ENGINEERING
ENVIRONMENTAL SERVICES • SURVEY & LAND INFORMATION SERVICES

SHEET 1 OF 1
DWG. NO: 11-208