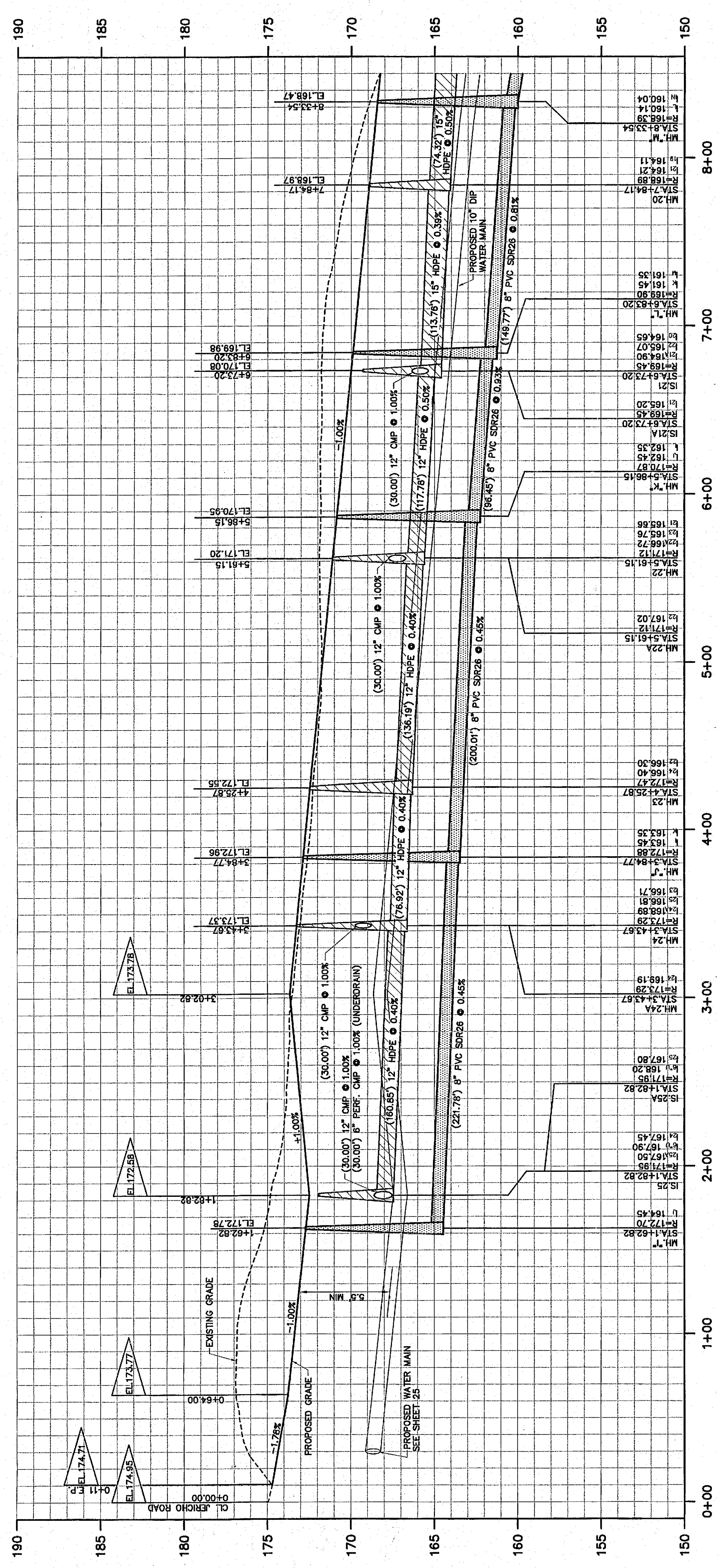


GENERAL PLAN - BRIDLE PATH
 CENTERLINE STATIONING 0+00 - 8+50
 SCALE: 1" = 40'

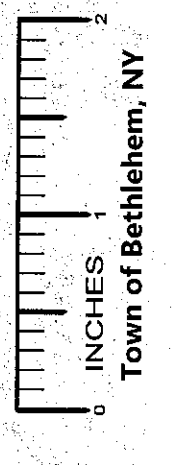


PROFILE - BRIDLE PATH
 SCALE: 1" = 4' VERT. / 1" = 40' HORIZ.

FOR PROPOSED WATER MAIN IN JERICO ROAD SEE PLAN AND PROFILE OF PROPOSED WATER MAIN AND PROPOSED SEWER MAIN IN RESIDENTIAL SUBDIVISION SEE SHEET 25

PLANNING BOARD
 TOWN OF BETHELEM
 ALBANY COUNTY NEW YORK
 FINAL PLAN APPROVAL
 WHEN SIGNED BY THE PLANNING BOARD, THE OFFICER OF THE PLANNING BOARD FOR ENDORSEMENT CONSTITUTES FINAL APPROVAL OF THIS PLAN.
 TITLE: *Bridle Path*
 SIGNED: *Charles J. Matlock*
 DATE: *12-17-96*
 SEE ALSO CERTIFICATE OF APPROVAL OF FINAL PLAN NO. *162-96-1-1*

ALBANY COUNTY DEPARTMENT OF HEALTH
 DIVISION OF ENVIRONMENTAL HEALTH SERVICES
 By direction of the Commissioner of Health, these plans are hereby approved. See that stand for clear and complete signature.



Town of Bethlehem, NY

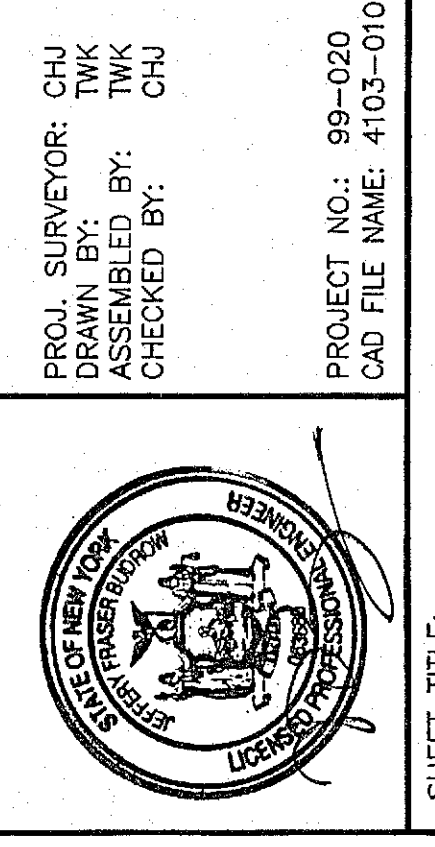
UNAUTHORIZED ALTERATIONS OR ADDITIONS TO THIS DOCUMENT IS A VIOLATION OF SECTION 1707 OF THE NEW YORK STATE EDUCATION LAW

DATE	BY	DESCRIPTION	SYMBOL
6/98	CH	FINAL PLAN REVISIONS	▲
10/98	CH	FINAL PLAN REVISIONS	▲
5/00	CH	FINAL PLAN REVISIONS	▲
12/00	CH	FINAL PLAN REVISIONS	▲
1/2001	CH	FINAL PLAN REVISIONS	▲

EDWARD W. BOUTELLE AND SON
 CIVIL ENGINEERS AND SURVEYORS
 423 KENWOOD AVENUE
 DELMAR, NEW YORK
 TEL (516) 439-9981 FAX (516) 439-9882
 A DIVISION OF J. EDWERTH FRASER AND ASSOCIATES, P.C., L.L.P.

FINAL PLAN AMENDED CARRIAGE HILL SUBDIVISION
 MAP OF LANDS OF CHARLEW CONSTRUCTION CORP.
 SEP 15 2000
 TOWN OF BETHELEM, ALBANY COUNTY OF ALBANY STATE OF NEW YORK

SCALE: AS NOTED



PROJECT NO.: 99-020
 CAD FILE NAME: 4103-010
 SHEET TITLE: **PLAN & PROFILE**
 BRIDLE PATH STA. 0+00 - 8+50
 DATE: NOVEMBER 1999 SHEET 10 OF 31