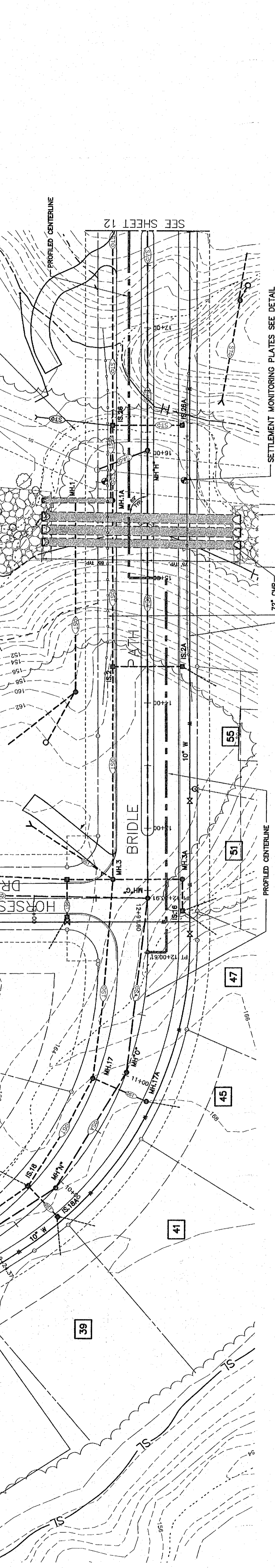


**GENERAL NOTES**

1. CONTRACTOR SHALL COORDINATE FINAL DOWNSKILL QUANTITIES AND ELEVATIONS WITH TOWN ENGINEER PRIOR TO INSTALLATION.

374 S.Y. OF 30" THICK GROUTED RIP-RAP APRON, PROVIDE A 10% OVERLAP BETWEEN RIPS AND MEDIUM RIP-RAP PER TOWN STANDARDS. ALSO PROVIDE 10% OVERLAP BETWEEN RIPS IN FRONT OF PIPE DISCHARGES AND BETWEEN ELEVATIONS 124 AND 133 ON THE EASTERN SLOPE DOWNSKILL EMBANKMENT.

ABANDONED STREAM BED TO BE FILLED WITH CONTROLLED FILL-MATERIAL. SEE GENERAL NOTE 5 ON SHEET 2. ALL EXCAVATED NATIVE MATERIAL IS TO BE REMOVED FROM THE RAINE. ALL FILL IN RAINE TO BE IMPORTED GRANULAR FILL SOILS. SEE NOTE 11 SHEET 4 FOR MATERIAL SPECIFICATION.



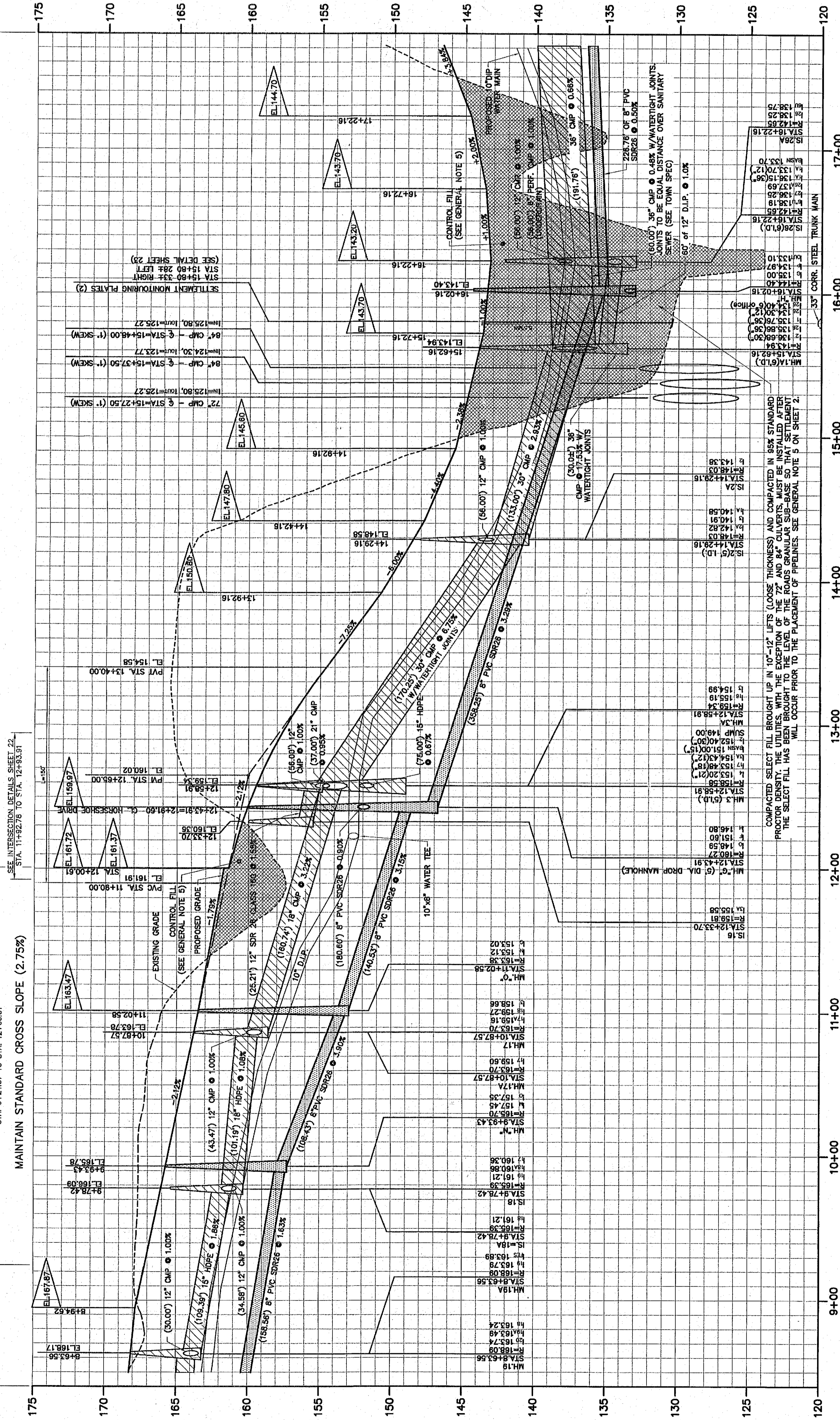
**GENERAL PLAN - BRIDLE PATH**  
CENTERLINE STATIONING 8+50 - 17+80  
SCALE: 1" = 40'

RUSTIC STEEL GUIDERAIL SYSTEM, REFER TO NYSDOT STANDARD SHEET M608-6 AND M608-7 FOR DETAILS. INSTALL STEEL GUIDE RAILS STA. 14+00 TO STA. 17+00 BOTH SIDES 32' FROM CENTERLINE OF R.O.W.

20"x45"x20" THICK GROUTED RIP-RAP APRON PER TOWN STANDARDS. MEDIUM RIP-RAP PER TOWN STANDARDS.

SETTLEMENT MONITORING PLATES SEE DETAIL ON SHEET 23

PROFILE IS OF LINE SHOWN ON PLAN VIEW ABOVE.



**PROFILE - BRIDLE PATH**  
SCALE: 1" = 4' VERT. / 1" = 40' HORIZ.

**REVISIONS**

DATE	BY	DESCRIPTION	SYMBOL
6/18	CHJ	FINAL PLAN REVISIONS	△
10/19	CHJ	FINAL PLAN REVISIONS	△
9/00	CHJ	FINAL PLAN REVISIONS	△
12/01	CHJ	FINAL PLAN REVISIONS	△
12/01	CHJ	FINAL PLAN REVISIONS	△
7/07	CHJ	FINAL PLAN REVISIONS	△
10/24	CHJ	FINAL PLAN REVISIONS	△
1/06	CHJ	FINAL PLAN REVISIONS	△
3/03	CHJ	MISCELLANEOUS	△
4/20/04	CHJ	MISCELLANEOUS REVISIONS FOR TOWN COMMENTS	△

**EDWARD W. BOUTELLE AND SON**  
CIVIL ENGINEERS AND SURVEYORS  
423 KENWOOD AVENUE  
DELMAR, NEW YORK  
TEL (516) 439-9981 FAX (516) 439-9982  
A DIVISION OF J. KENNETH FRASER AND ASSOCIATES, P.C., P.A., P.C.

**FINAL PLAN AMENDED**  
**CARRIAGE HILL SUBDIVISION**  
MAP OF LANDS OF  
**CHARLEW CONSTRUCTION CORP.**  
SEP 1 6 2006  
TOWN OF BETHELM  
COUNTY OF ALBANY  
STATE OF NEW YORK

SCALE: AS NOTED



ALBANY COUNTY DEPARTMENT OF HEALTH  
DIVISION OF ENVIRONMENTAL HEALTH SERVICES  
This plan has been reviewed and approved by the Commissioner of Health, these plans are subject to approval. See that stand for date and signature.

PROJ. SURVEYOR: CHJ  
DRAWN BY: TWK  
ASSEMBLED BY: CHJ  
CHECKED BY: CHJ

PROJECT NO.: 99-020  
CAD FILE NAME: 4103-011

SHEET TITLE: **PLAN & PROFILE**  
BRIDLE PATH STA. 8+50 - 17+80

DATE: NOVEMBER 1995 SHEET 11 OF 31

