

GENERAL NOTES

PLANNING BOARD  
TOWN OF BETHLEHEM  
ALBANY COUNTY, NEW YORK  
FINAL PLAT APPROVAL  
WHEN SIGNED BY THE DULY AUTHORIZED  
OFFICER OF THE PLANNING BOARD, THIS  
APPROVAL CONSTITUTES FINAL APPROVAL  
SIGNED: *John J. Madigan*  
TITLE: *Charlewe*  
DATE: *8-12-96*  
SEE ALSO CERTIFICATE OF APPROVAL  
OF FINAL PLAT NO. *124-22-21*

UNAUTHORIZED ALTERATIONS OR ADDITIONS TO THIS DOCUMENT  
IS A VIOLATION OF THE PROFESSIONAL ENGINEERING LAW OF THE  
STATE OF NEW YORK, EDUCATION LAW, SECTION 207.

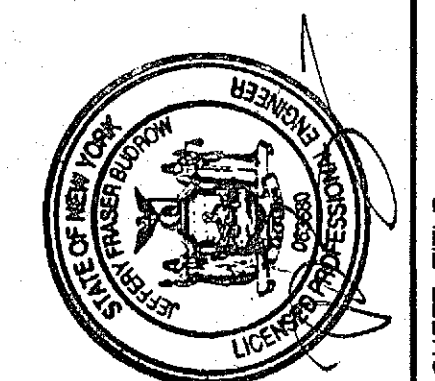
REVISIONS

DATE	BY	DESCRIPTION	SYMBOL
9/78	CH	FINAL PLAN REVISIONS	▲
10/78	CH	FINAL PLAN REVISIONS	▲
3/79	CH	FINAL PLAN REVISIONS	▲
12/79	CH	FINAL PLAN REVISIONS	▲
1/28/81	CH	FINAL PLAN REVISIONS	▲
7/28/81	CH	FINAL PLAN REVISIONS	▲
8/82	CH	FINAL PLAN REVISIONS	▲
1/78	CH	FINAL PLAN REVISIONS	▲
3/78	CH	MISCELLANEOUS REVISIONS	▲
4/78	CH	MISCELLANEOUS REVISIONS	▲

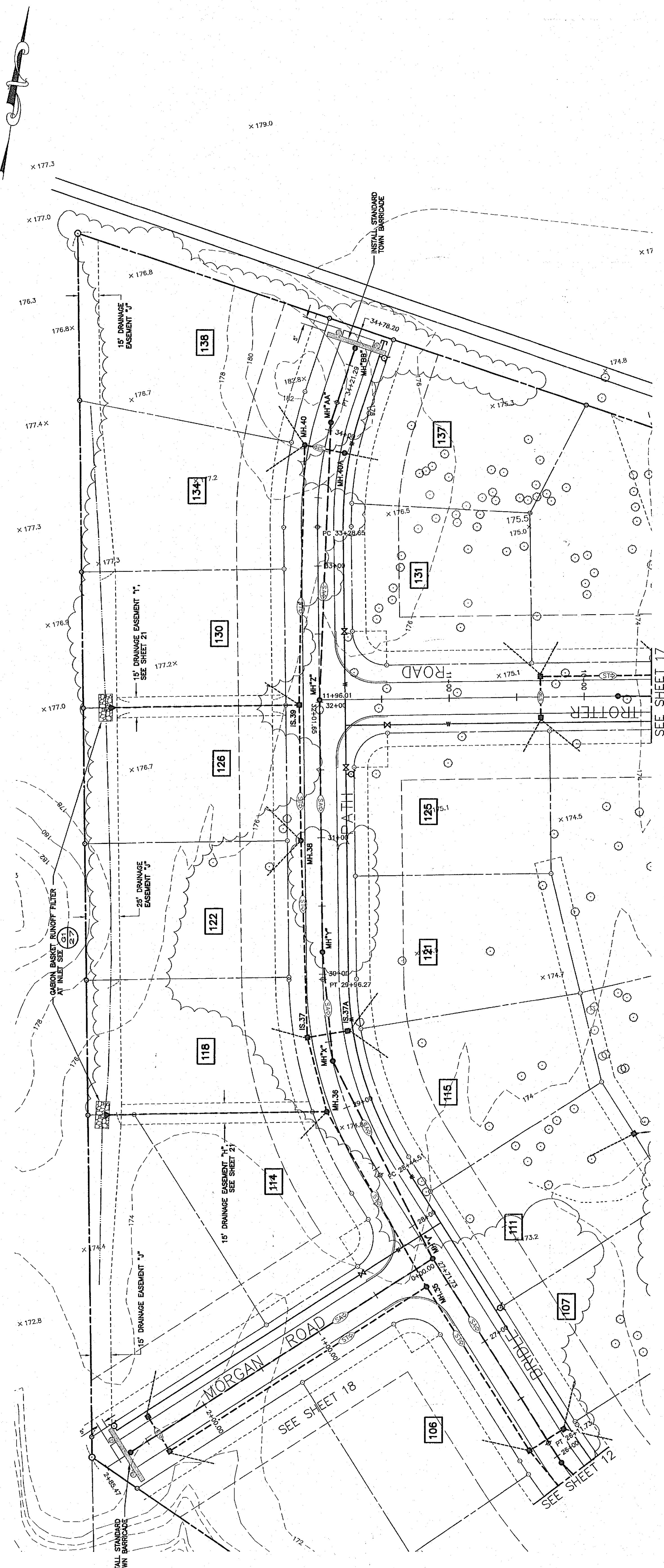
**EDWARD W. BOUTELLE  
AND SON**  
CIVIL ENGINEERS AND SURVEYORS  
423 KENWOOD AVENUE  
DELAWARE, NEW YORK  
TEL (518) 438-9981 FAX (518) 438-9982  
A DIVISION OF J. EDWIN FRASER AND ASSOCIATES, P.C., ILL. P.C.

**FINAL PLAN  
AMENDED  
CARRIAGE HILL  
SUBDIVISION**  
MAP OF LANDS OF  
**CHARLEW  
CONSTRUCTION CORP.**

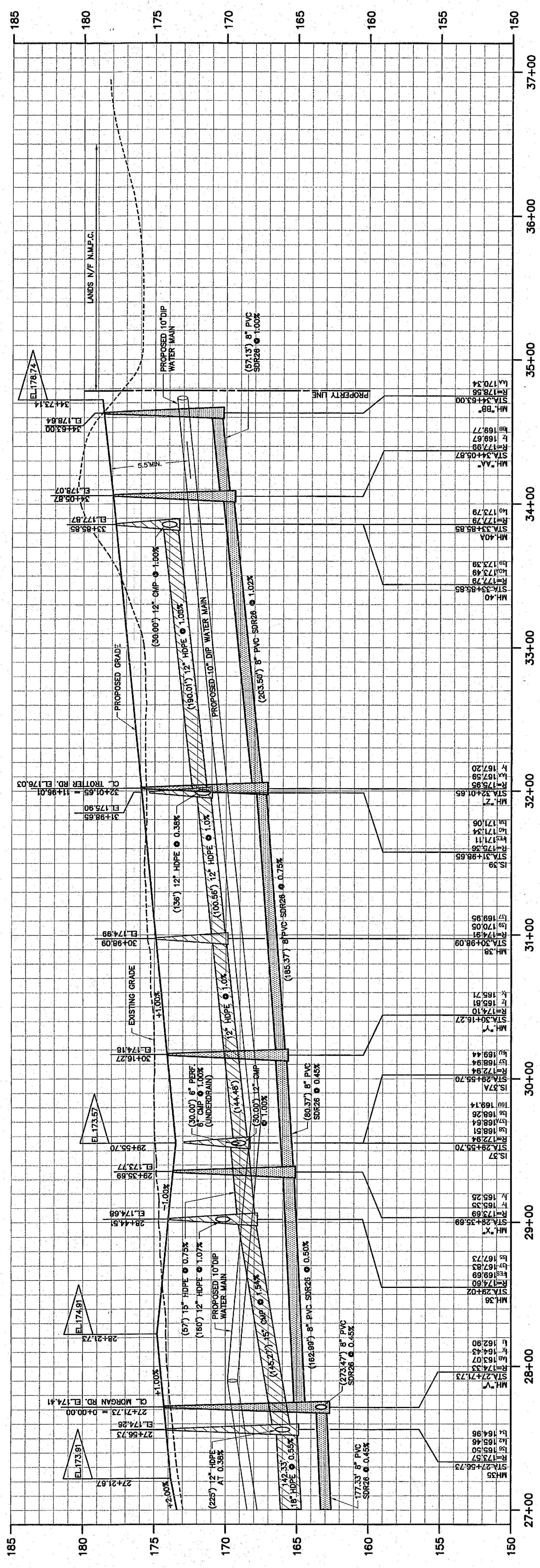
TOWN OF BETHLEHEM  
STATE OF NEW YORK  
SCALE: AS NOTED



PROJ. SURVEYOR: CHJ  
CHECKED BY: THW  
ASSEMBLED BY: THW  
CHECKED BY: CHJ  
PROJECT NO: 98-020  
CAD FILE NAME: 4103-013  
SHEET TITLE: **PLAN & PROFILE**  
BRIDLE PATH STA. 27+00 - 34+78.20  
DATE: NOVEMBER 1995 SHEET 13 OF 31



**GENERAL PLAN - BRIDLE PATH**  
CENTERLINE STATIONING 27+00 - 34+78.20  
SCALE: 1" = 40'



**PROFILE - BRIDLE PATH**  
SCALE: 1" = 4' VERT. / 1" = 40' HORIZ.

ALBANY COUNTY DEPARTMENT OF HEALTH  
DIVISION OF ENVIRONMENTAL HEALTH SERVICES  
This plan was reviewed by the Division of Environmental Health Services. The data and information shown hereon are based on the information provided. See last sheet for data and information.

