

GENERAL NOTES

PLANNING BOARD
TOWN OF BETHLEHEM
ALBANY COUNTY, NEW YORK
FINAL PLAT APPROVAL
WHEN SIGNED BY THE ONLY AUTHORIZED OFFICER OF THE PLANNING BOARD, APPROVAL OF THIS PROJECT CONSTITUTES FINAL APPROVAL OF THIS PROJECT.
SIGNED: *Robert D. Mathew*
TITLE: *Final Plat*
DATE: *11-17-98*
SEE ALSO CERTIFICATE OF APPROVAL OF FINAL PLAT NO. *161-27-71*

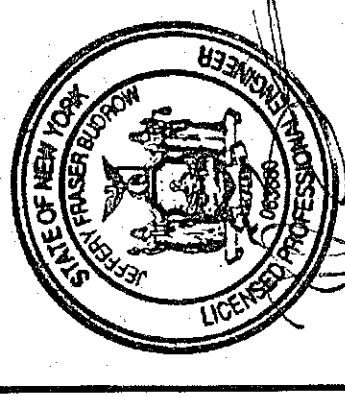
UNAUTHORIZED ALTERATIONS OR ADDITIONS TO THIS DOCUMENT IS A VIOLATION OF SECTION 200 SUBSECTION 2 OF THE NEW YORK STATE ESDS/CAD LAW.

DATE	BY	DESCRIPTION	SYMBOL
4/08	CH	FINAL PLAN REVISIONS	△
10/08	CH	FINAL PLAN REVISIONS	△
3/09	CH	FINAL PLAN REVISIONS	△
12/09	CH	FINAL PLAN REVISIONS	△
1/28/09	CH	FINAL PLAN REVISIONS	△
10/04	CH	FINAL PLAN REVISIONS	△
1/08	CH	MISCELLANEOUS REVISIONS	△
3/08	CH	MISCELLANEOUS REVISIONS	△
4/08	CH	MISCELLANEOUS REVISIONS	△

EDWARD W. BOUTELLE AND SON
CIVIL ENGINEERS AND SURVEYORS
423 KENWOOD AVENUE
DUMFRIES, NEW YORK 12168
TEL: (518) 439-5981 FAX: (518) 439-9882
A DIVISION OF J. BENEDETTO PAPER AND ASSOCIATES, P.C. S.A. P.C.

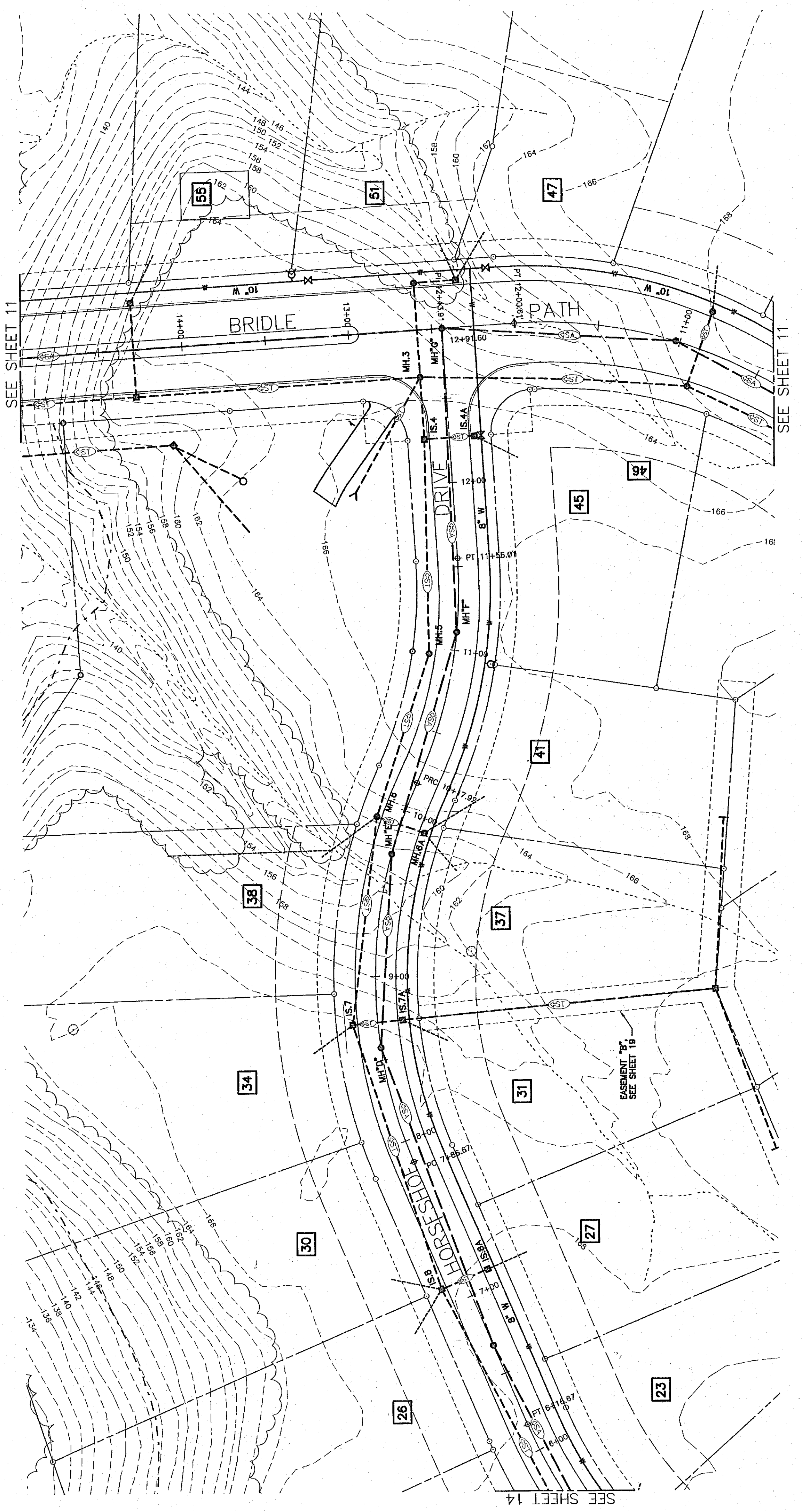
FINAL PLAN AMENDED
CARRIAGE HILL SUBDIVISION
MAP OF LANDS OF
CHARLEW CONSTRUCTION CORP.

SEP 15 2008
TOWN OF BETHLEHEM, ALBANY COUNTY OF NEW YORK
SCALE: AS NOTED

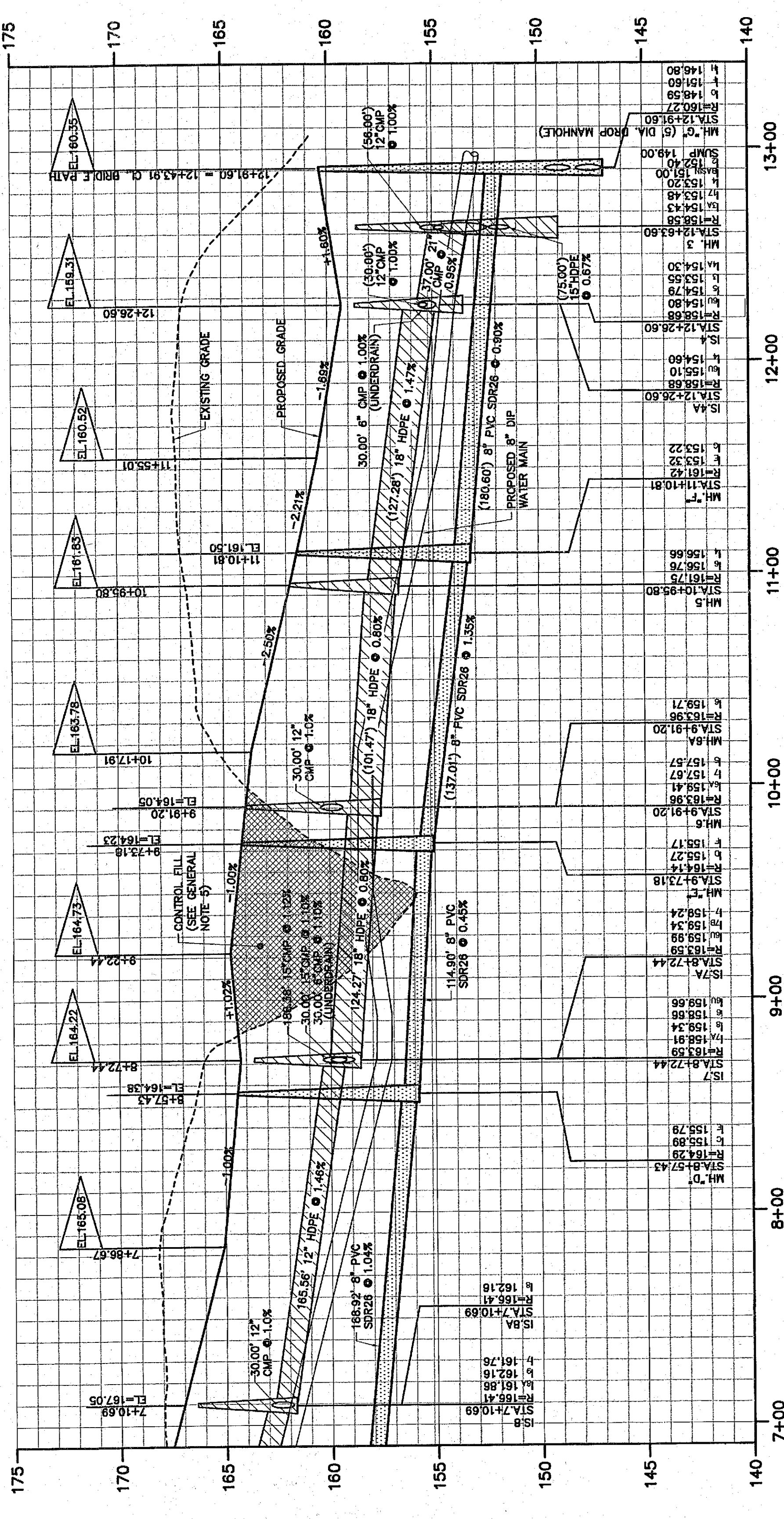


PROJ. SURVEYOR: CHJ
DRAWN BY: TWK
CHECKED BY: CHJ

PROJECT NO.: 89-030
CAD FILE NAME: 4103-015
SHEET TITLE: **PLAN & PROFILE**
HORSESHOE DRIVE STA. 6+80 - 12+91.60
DATE: NOVEMBER 1995 SHEET 15 OF 31

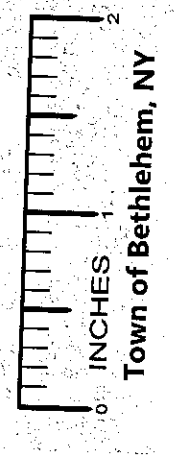


GENERAL PLAN - HORSESHOE DRIVE
CENTERLINE STATIONING 6+80 - 12+91.60
SCALE: 1" = 40'



PROFILE - HORSESHOE DRIVE
SCALE: 1" = 4' VERT. / 1" = 40' HORIZ.

ALBANY COUNTY DEPARTMENT OF HEALTH
DIVISION OF ENVIRONMENTAL HEALTH SERVICES
By direction of the Commissioner of Health, the plans are hereby approved. See next sheet for date and expiration.



0 10 INCHES
Town of Bethlehem, NY

