

GENERAL NOTES

PLANNING BOARD
TOWN OF BETHELM
ALBANY COUNTY, NEW YORK
FINAL PLAN APPROVAL

WHEN SIGNED BY THE DULY AUTHORIZED
OFFICER OF THE PLANNING BOARD, THIS
ENDORSEMENT CONSTITUTES FINAL APPROVAL
OF THIS PLAN.

SIGNED: *Robert J. Madigan*
TITLE: *Commissioner*
DATE: *10-17-96*

SEE ALSO CERTIFICATE OF APPROVAL
OF FINAL PLAN NO. *124-EE-71*

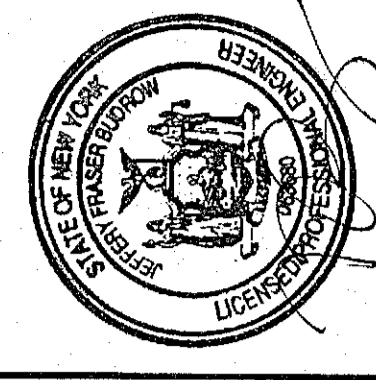
UNAUTHORIZED ALTERATIONS OR ADDITIONS TO THIS DOCUMENT
IS A VIOLATION OF SECTION 7000 SUBDIVISION 2 OF THE
GENERAL VEHICLE AND TRAFFIC LAWS.

DATE	BY	DESCRIPTION	SYMBOL
6/99	CHJ	FINAL PLAN REVISIONS	▲
10/99	CHJ	FINAL PLAN REVISIONS	▲
5/00	CHJ	FINAL PLAN REVISIONS	▲
12/00	CHJ	FINAL PLAN REVISIONS	▲
1/28/01	CHJ	FINAL PLAN REVISIONS	▲
3/02	CHJ	FINAL PLAN REVISIONS	▲
4/02	CHJ	MISCELLANEOUS REVISIONS	▲
7/08	CHJ	MISCELLANEOUS REVISIONS	▲
4/08	CHJ	MISCELLANEOUS REVISIONS	▲

**EDWARD W. BOUTELLE
AND SON**
CIVIL ENGINEERS AND SURVEYORS
1145 KENWOOD AVENUE
DELAWARE, NEW YORK
TEL (518) 439-9981 FAX (518) 439-9982
A DIVISION OF J. KENNETH FAUSER AND ASSOCIATES, P.C.

FINAL PLAN
AMENDED
**CARRIAGE HILL
SUBDIVISION**
MAP OF LANDS OF
**CHARLEW
CONSTRUCTION CORP.**

SEP 1 9 2006
TOWN OF BETHELM
ALBANY COUNTY, NEW YORK
SCALE: AS NOTED

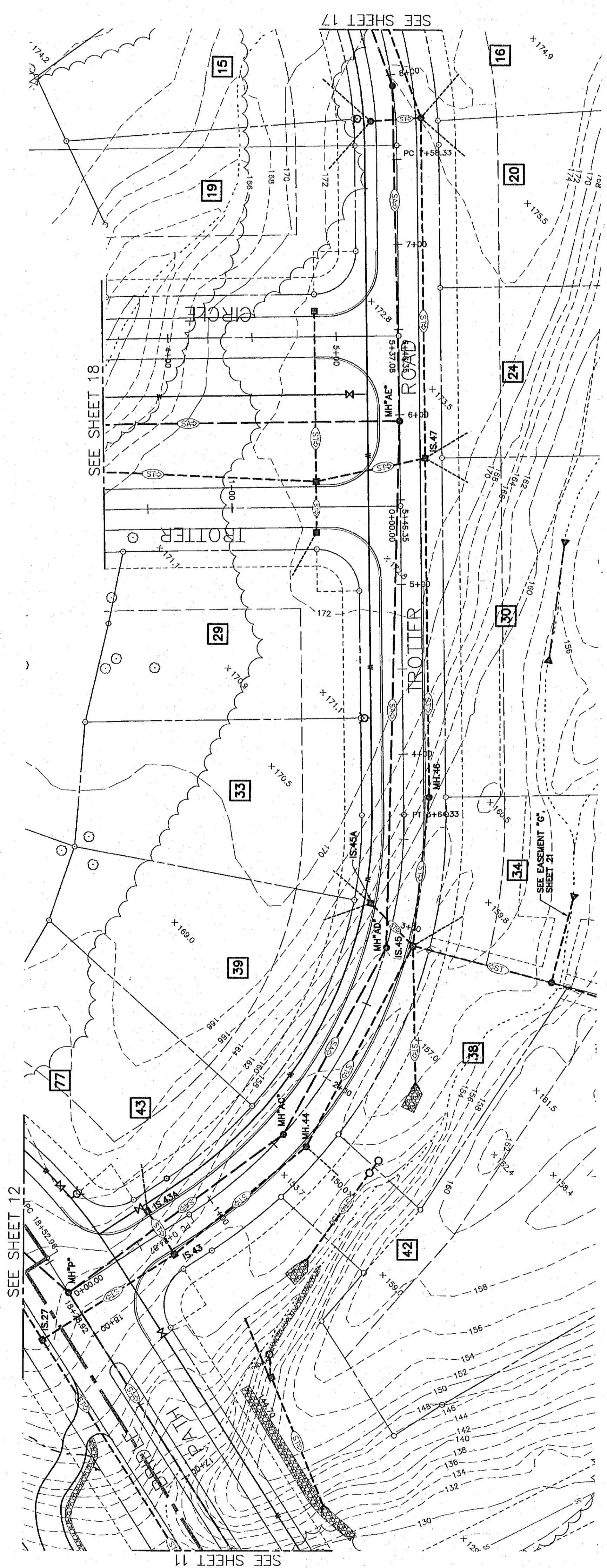


PROJ. SURVEYOR: CHJ
DRAWN BY: THK
CHECKED BY: CHJ

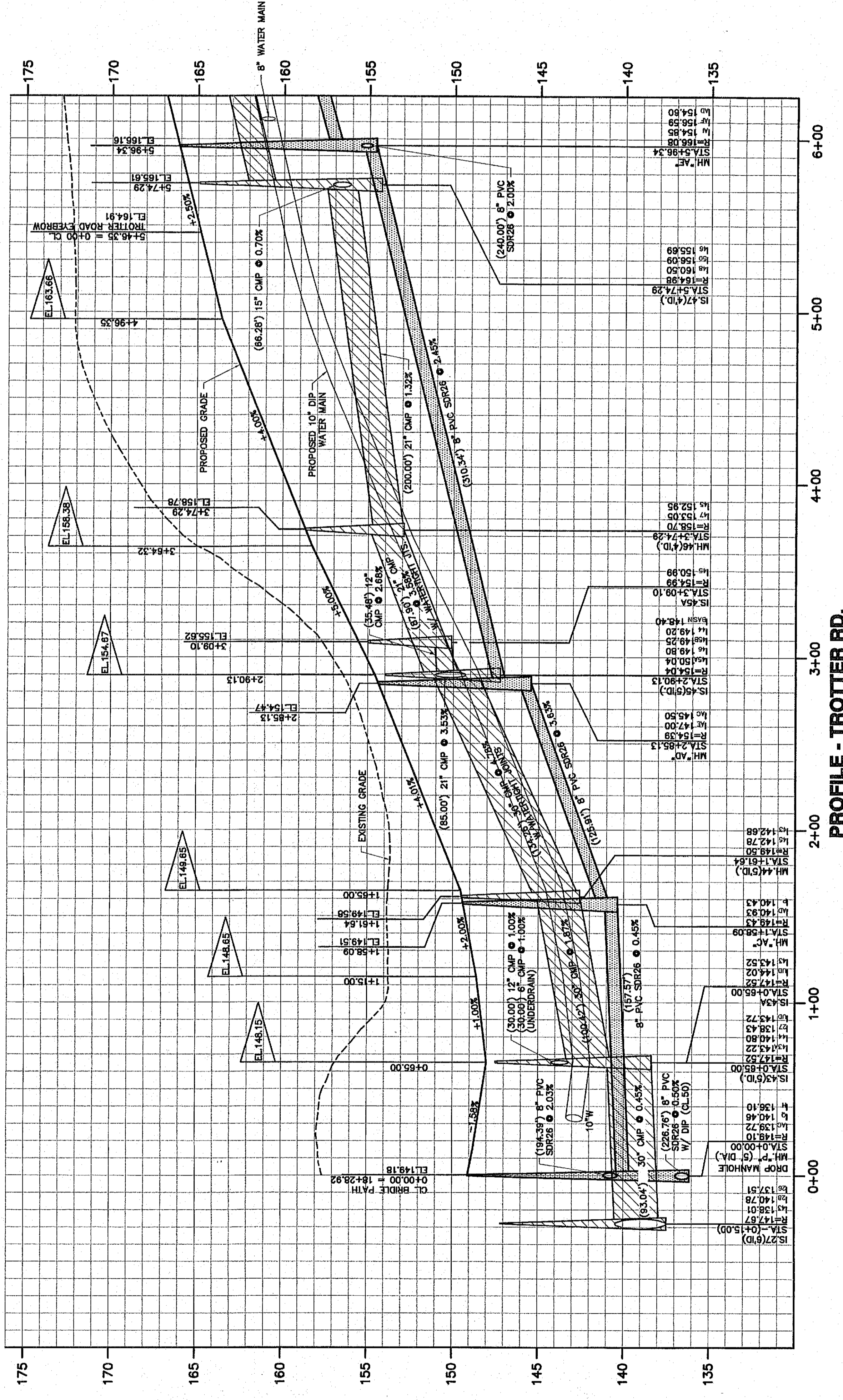
PROJECT NO.: 99-030
CAD FILE NAME: 4103-016

SHEET TITLE: **PLAN & PROFILE**
TROTTER ROAD STA. 0+00 - 6+20

DATE: NOVEMBER 1995 SHEET 16 OF 31

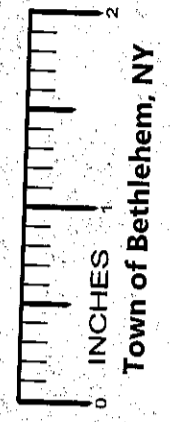


GENERAL PLAN - TROTTER RD.
CENTERLINE STATIONING 0+00 - 6+20
SCALE: 1" = 40'



PROFILE - TROTTER RD.
SCALE: 1" = 4' VERT. \ 1" = 40' HORIZ.

ALBANY COUNTY DEPARTMENT OF HEALTH
DIVISION OF ENVIRONMENTAL HEALTH SERVICES
By direction of the Commissioner of Health, these
plans and specifications are approved. See text sheet for
date and signature.



Town of Bethlehem, NY

